

REQUEST FOR PROPOSAL

Project Title: Cooley Laboratory Renovation
Location: Montana State University

PPA No.: 10-0023
RFP No.: 87
Date: December 28, 2012

To: Dick Anderson Construction
4498 Jackrabbit Lane
Bozeman, MT 59718

Attention: Platisha

From: Cecilia Vaniman, Project Manager
Cooley Lab Renovation
Montana State University

Attention: _____

In order to expedite the Work and avoid or minimize delays in the Work the following information is requested. Please return a response by: 12/30/2012 Date Sent: 12/30/2012
Date Received: _____

Proposal Requested:

PROVIDE NEW TASK LIGHTING AT UNDERSHELVING LOCATIONS

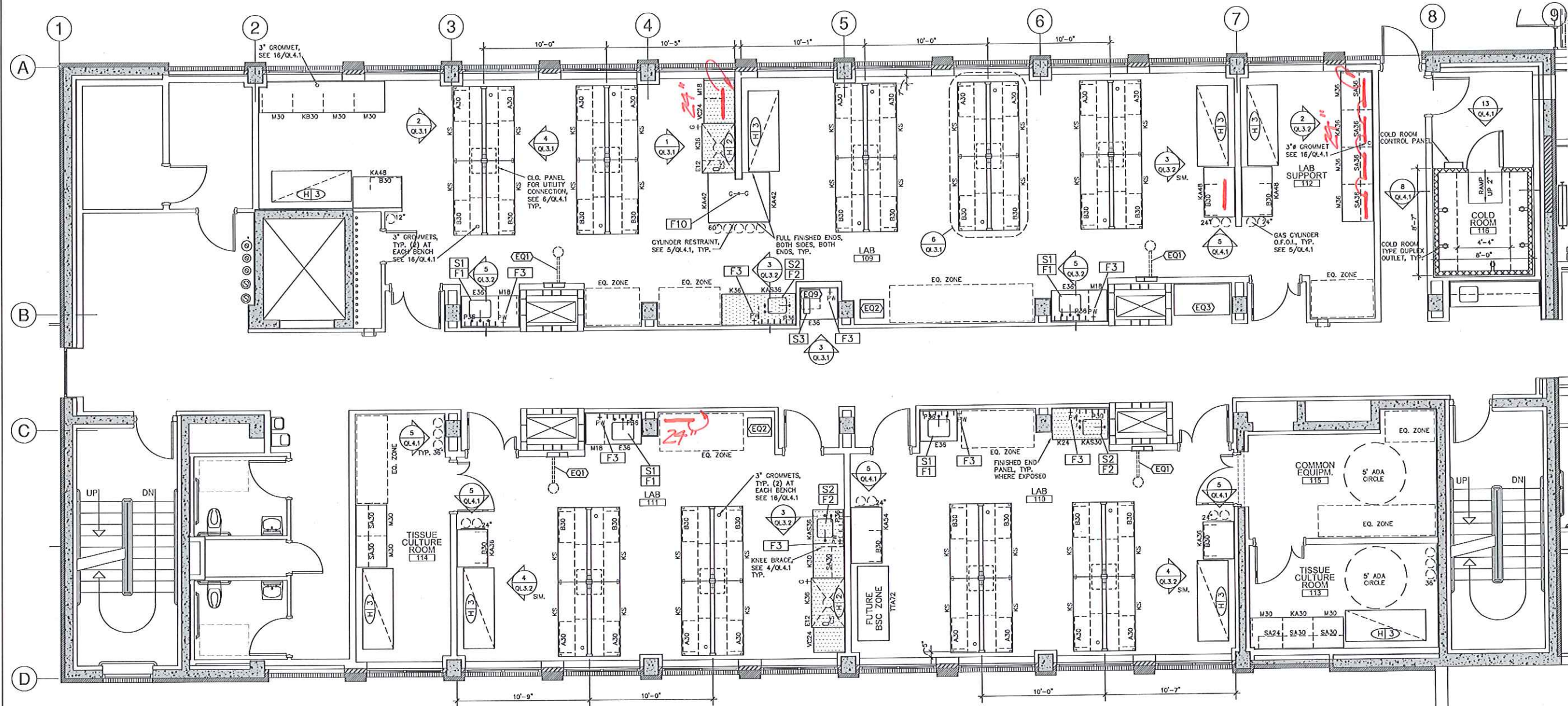
Scope of work includes; Division 16

At each location under shelving as indicated on the drawings, provide new a task light fixture, to be switched with rocker switch to match existing light fixtures. Fixture shall be JESCO Lighting, model #SG5A-14 with T5 lamps, 4100K color temperature and silver finish. Connect fixtures with connecting cables so the receptacle use per location is minimized. Provide one case (40) of replacement bulbs for the fixtures .

SEE ATTACHED RFP87 sheets -1 Through 6

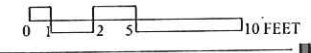
This RFP is for pricing purposes only. The contractor shall not proceed with the scope of work described within until pricing is approved by the owner in writing.

Distribution: Owner Architect Engineer
 Agency Contractor Other



PLAN: FLOOR 1

SCALE: 1/4"=1'-0"



COOLEY. ADDITIONAL UNDER SHELF LIGHTING
CRU 12-28-2012

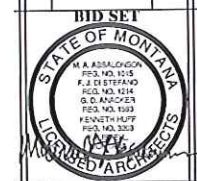
MONTANA STATE UNIVERSITY
 FACILITIES PLANNING, DESIGN & CONSTRUCTION
 BOZEMAN, MONTANA
 PHONE: 406-994-4131 FAX: 406-994-6572

Architects
 Design Group PC
 1 SUNSET PLAZA KALISPELL, MT 49627705

Montana State University
Cooley Lab Renovation
 Bozeman, Montana



DRAWN BY:	GB	
CHECKED BY:	MO	
APPROVED BY:	NW	
REV	DESCRIPTION	DATE
1	ISSUE	11/11/2011
2	CD	11/11/2011
3	FINAL	11/11/2011



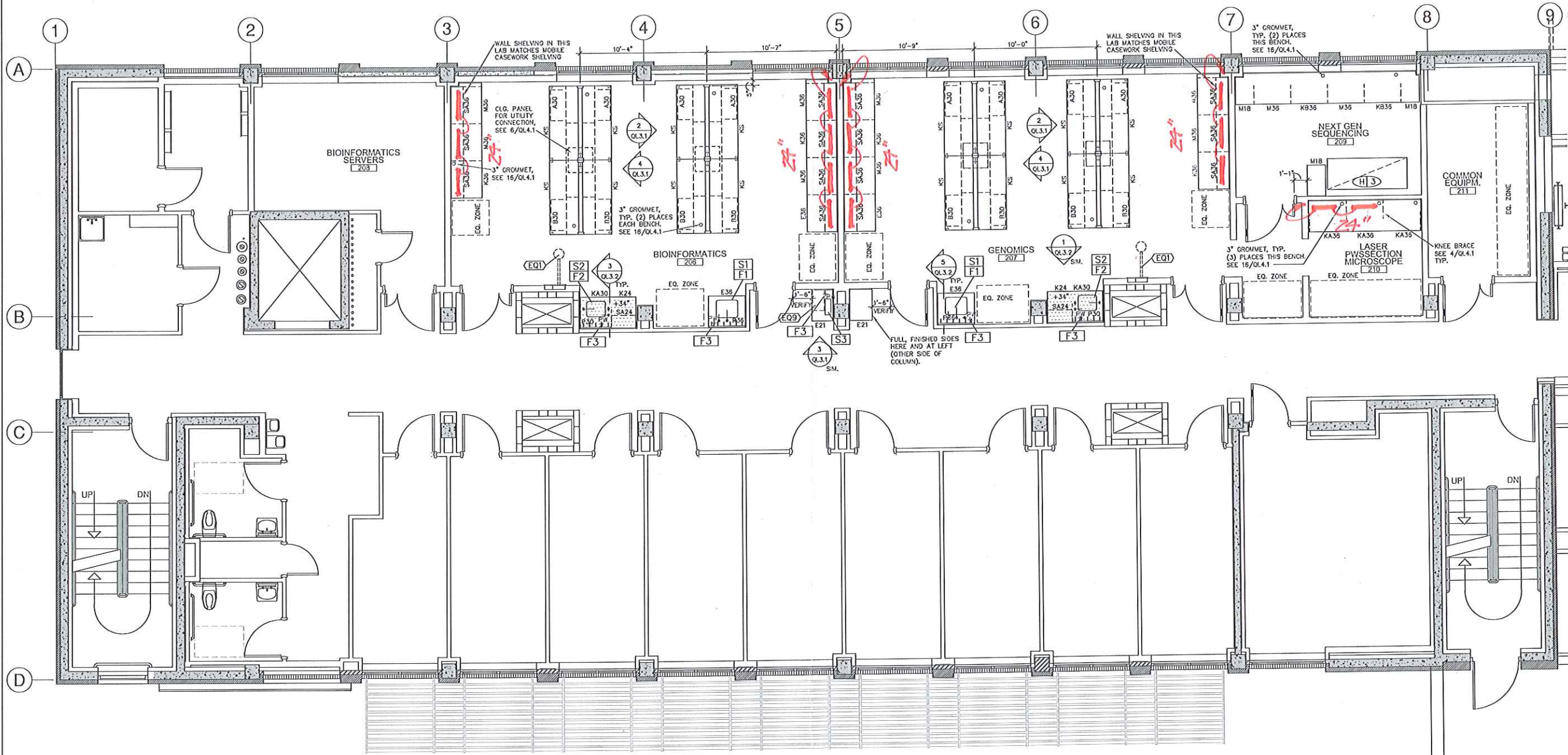
M.S.U. PPA 10-6013
 ADG 10-610

FIRST FLOOR
 LABORATORY
 PLAN

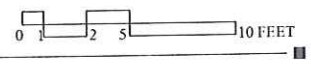
QL1.1

March 14, 2011

RFP 87-1



PLAN: FLOOR 2
SCALE: 1/4"=1'-0"



COOLEY ADDITIONAL UNDER SHELF LIGHTING
CRU 12-28-2012

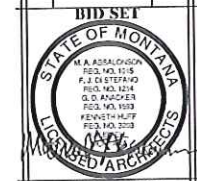
MONTANA STATE UNIVERSITY
FACILITIES PLANNING, DESIGN & CONSTRUCTION
BOZEMAN, MONTANA
PHONE: 406.994.4131 FAX: 406.994.6572

Architects
Design Group PC
1 SUNSET PLAZA
KALISPELL, MT 496.257.7125

Montana State University
Cooley Lab Renovation
Bozeman, Montana



DRAWN BY:	GB	
CHECKED BY:	MO	
APPROVED BY:	NW	
REV	DESCRIPTION	DATE
1	ADD	12/28/12
2	CHG	12/28/12
3	FINAL	12/28/12



M.S.U. PPA 10-0013
ADG 10-010

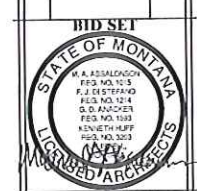
SECOND FLOOR
LABORATORY
PLAN

QL1.2

March 14, 2011



DRAWN BY: GB	DATE:
CHECKED BY: MO	DATE:
APPROVED BY: NW	DATE:
REV. DESCRIPTION	DATE
1.00	03/11/2011
2.00	03/11/2011
3.00	03/11/2011

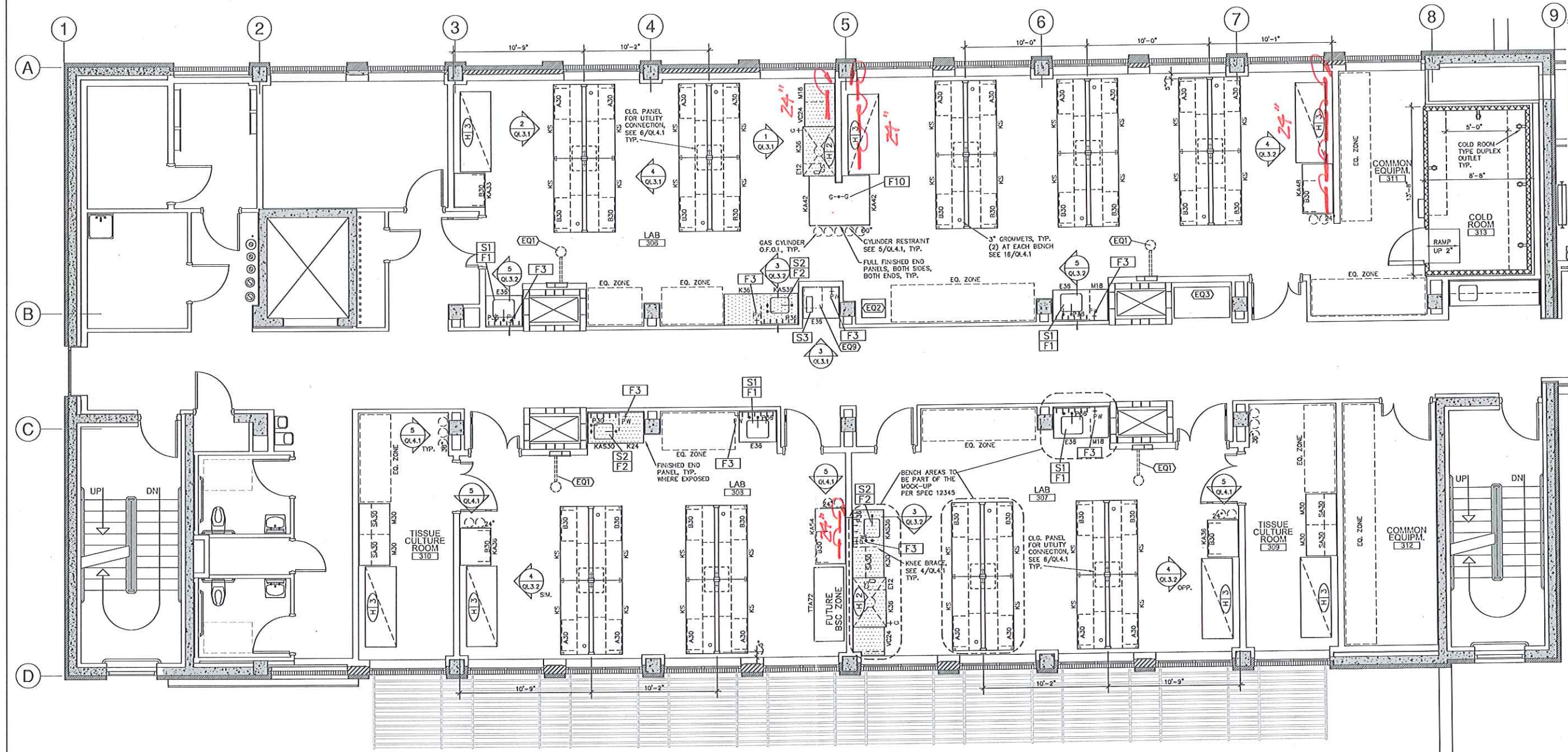


MSU, PPA 10-6013
 ADG 10-610

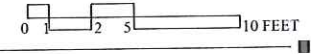
THIRD FLOOR
 LABORATORY
 PLAN

QL1.3

March 14, 2011



PLAN: FLOOR 3
 SCALE: 1/4"=1'-0"

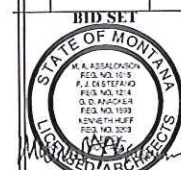


*COOLEY- ADDITIONAL UNDER SHELF LIGHTING
 CRU 12-28-2012*

**Montana State University
 Cooley Lab Renovation
 Bozeman, Montana**



DRAWN BY: GB	DATE: 12/20/12	
CHECKED BY: MO	DATE: 12/20/12	
APPROVED BY: NW	DATE: 12/20/12	
REV	DESCRIPTION	DATE
1	ISSUE	12/20/12
2	CD	12/20/12
3	FINAL	12/20/12

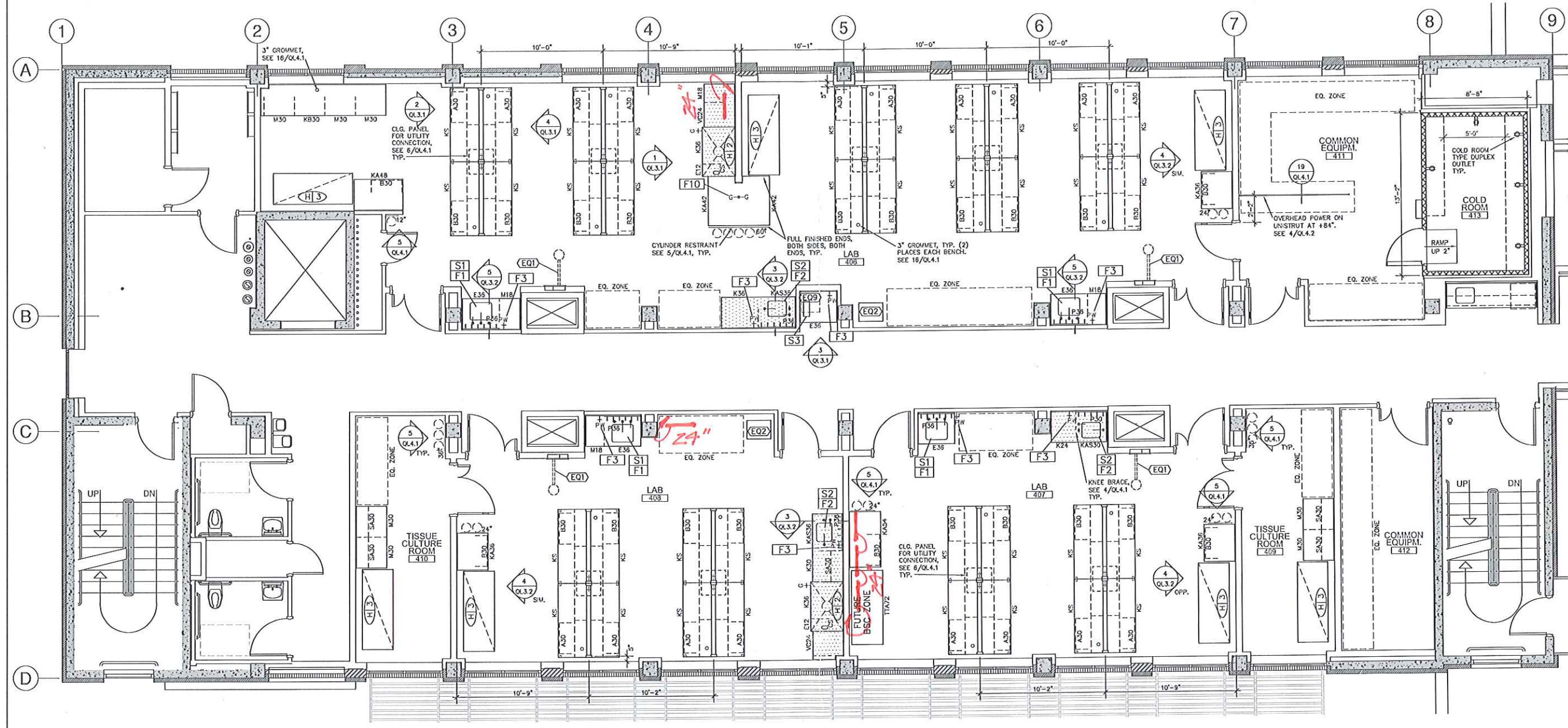


M.S.U. PPA 10-6023
 ADG 10-010

FOURTH FLOOR
 LABORATORY
 PLAN

QL1.4

March 14, 2011



PLAN: FLOOR 4
 SCALE: 1/4"=1'-0"
 NORTH

*COOLEY - ADDITIONAL UNDER SHELF LIGHTING
 CRU - 12-20-2012*

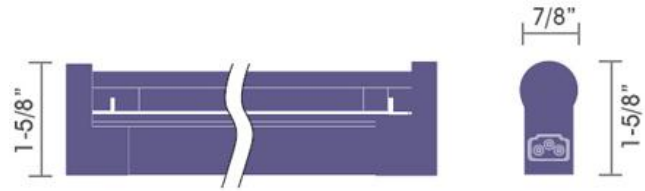
RFP87-4



SG5A-xx

MINI FLUORESCENT SLEEK PLUS
ADJUSTABLE T5 • 3-WIRE GROUNDED SERIES

Type	
Project	
Catalog No.	



CATALOG INFORMATION

MODEL	DIMENSIONS	LAMPING	LUMENS*	COLOR OUTPUT	FINISH
SG5A-6**	9-1/2"L x 7/8"W x 1-5/8"H	T5 6W	480	30, 35, 41, 50, 64, BU, GN, RD, BK	W, S
SG5A-8**	12-1/2"L x 7/8"W x 1-5/8"H	T5 8W	600	30, 35, 41, 50, 64, BU, GN, RD, BK	W, S
SG5A-14	22-7/8"L x 7/8"W x 1-5/8"H	T5 14W	1350	30, 35, 41, 50, 64, BU, GN, RD, BK	W, S
SG5A-21	34-5/8"L x 7/8"W x 1-5/8"H	T5 21W	2150	30, 35, 41, 50, 64, BU, GN, RD, BK	W, S
SG5A-28	46-1/2"L x 7/8"W x 1-5/8"H	T5 28W	2900	30, 35, 41, 50, 64, BU, GN, RD, BK	W, S
SG5A-35	58-1/4"L x 7/8"W x 1-5/8"H	T5 35W	3650	30, 35, 41, 50, 64, BU, GN, RD, BK	W, S

* Based on 4100K lamps.

** The 6W and 8W fixtures are not available with a Rocker Switch.

Ordering Instructions

Examples:

MODEL	SWITCH	OUTPUT	FINISH	
SG5A-14	SW	30	W S	With built-in Rocker Switch
SG5A-14		30	W	Without Rocker Switch

DESCRIPTION

- Sleek Plus Adjustable T5 fluorescent fixtures feature an adjustable light shield that provides 360° rotation to direct light where necessary.
- Patent pending fixtures are furnished with replaceable lamps, tight-fit direct connectors, stainless steel mounting clips for vertical or horizontal mount, and ribbed acrylic lamp covers.
- Fixtures butt together reducing dark area to less than 1" and with minimal shadowing when they are connected directly.
- Optional On/Off Rocker Switch that does not increase the length of the fixture as it is located on the side.
- Lamp CRI > 82 with the use of tri-phosphor.
- Power and connector cables have separate UL listings.
- Functions with all code approved lighting branch circuits, including 15A and 20A, as the fixtures are not limited to any size circuit. The wiring is according to lighting circuit load ratings.
- The ribbed acrylic diffuser lamp cover fits securely on the housing of the fixture with no light leaks, warping or deformed lens.
- Linkable up to 10 units, max 350 watts.
- Additional power supply cables, connecting cables, hard wire boxes and replacement lamps are sold separately.

COLOR OUTPUT

- 30 – 3000K
- 35 – 3500K
- 41 – 4100K
- 50 – 5000K
- 64 – 6400K
- BU – Blue
- GN – Green
- RD – Red
- BK – Black

FINISH

- W – White
- S – Silver

LAMPING:

The T5 lamps (included with fixtures) are energy efficient and long-life with a 20,000 hours rating.

BALLAST:

The fixture features a built-in programmed-start, no flickering, silent electronic ballast rated AC 120V 50-60Hz. 3-years commercial grade fluorescent ballast warranty.

CONSTRUCTION:

The housing is made of extruded aluminum with anodized silver or white enamel painted finish. Aluminum provides better heat dissipation, and longer fixture and lamp life.

LISTINGS:

UL & CUL Listed.
New York City approval.
FCC Part 18 Listed – tested for in-line and radiated interference.



www.jescolighting.com
support@jescolighting.com
Tech Support: 855.592.0029

6625 Traffic Ave
Glendale, NY 11385
Main Line: 800.527.7796
Fax Line: 855.265.5768

219 South 6th Ave
City of Industry, CA 91746
Main Line: 855.654.0110
Fax Line: 626.333.2955

Rev 5
12/13/2012

Specifications subject to change without notice.

Page 1 of 2



SG5A-xx

MINI FLUORESCENT SLEEK PLUS
ADJUSTABLE T5 • 3-WIRE GROUNDED SERIES

Type	
Project	
Catalog No.	

ACCESSORIES

FIXTURE	MODEL / DESCRIPTION	FIXTURE	MODEL / DESCRIPTION
	SG-DC: Direct Connector for end-to-end connection.		SG-MC-45: 45° Mounting Clip
	SG-B: Plastic Hard Wire Box with Control Switch 3-5/8"L x 2-1/4"W x 1-3/8"H		SP-PS6: Power Strip with 12 Outlets. Includes (1) Direct Connector (SP-DC) 72"L x 7/8"W x 7/8"H
	SG-BM: Commercial Grade Metal Hard Wire Box. Enables fixtures to be controlled by wall switch 2-3/4"L x 1-3/4"W x 1-3/4"H		SG-CC6: 6" Connecting Cable SG-CC12: 12" Connecting Cable SG-CC24: 24" Connecting Cable SG-CC36: 36" Connecting Cable
	SG-BM-SW Commercial Grade Metal Hardwire Box with Switch 3-1/2"L x 2"W x 1-1/8"H		SG-CC6L: 6" Right-Angle Connecting Cable SG-CC12L: 12" Right-Angle Connecting Cable SG-CC24L: 24" Right-Angle Connecting Cable SG-CC36L: 36" Right-Angle Connecting Cable
	SG-MC-VH: Stainless Steel Mounting Clip for Vertical & Horizontal Mount		SG-PC24-WH Power Cord & 3-Prong Plug – 2' White SG-PC72-W Power Cord & 3-Prong Plug – 6' White SG-PC72-G Power Cord & 3-Prong Plug – 6' Gray SG-PC96-W Power Cord & 3-Prong Plug – 8' White SG-PC144-W Power Cord & 3-Prong Plug – 12' White
	SG-MC-V: Stainless Steel Mounting Clip for Vertical Mount		SG-PCL: 6' Right Angle Power Cord & Plug – From Back
	SG-MC-A: Adjustable Mounting Clip		SG-PCLL: 6' Right Angle Power Cord & Plug – From Front



www.jescolighting.com
support@jescolighting.com
Tech Support: 855.592.0029

6625 Traffic Ave
Glendale, NY 11385
Main Line: 800.527.7796
Fax Line: 855.265.5768

219 South 6th Ave
City of Industry, CA 91746
Main Line: 855.654.0110
Fax Line: 626.333.2955

Rev 5
12/13/2012

Specifications subject to change without notice.