

REQUEST FOR PROPOSAL

Project Title: Cooley Laboratory Renovation
Location: Montana State University

PPA No.: 10-0023
RFP No.: 86
Date: December 13, 2012

To: Dick Anderson Construction
4498 Jackrabbit Lane
Bozeman, MT 59718

Attention: Platisha

From: Cecilia Vaniman, Project Manager
Cooley Lab Renovation
Montana State University

Attention: _____

In order to expedite the Work and avoid or minimize delays in the Work the following information is requested. Please return a response by: 12/18/2012 Date Sent: 12/13/2012
Date Received: _____

Proposal Requested:

PROVIDE NEW LIGHTING FIXTURES AT LAB SINKS

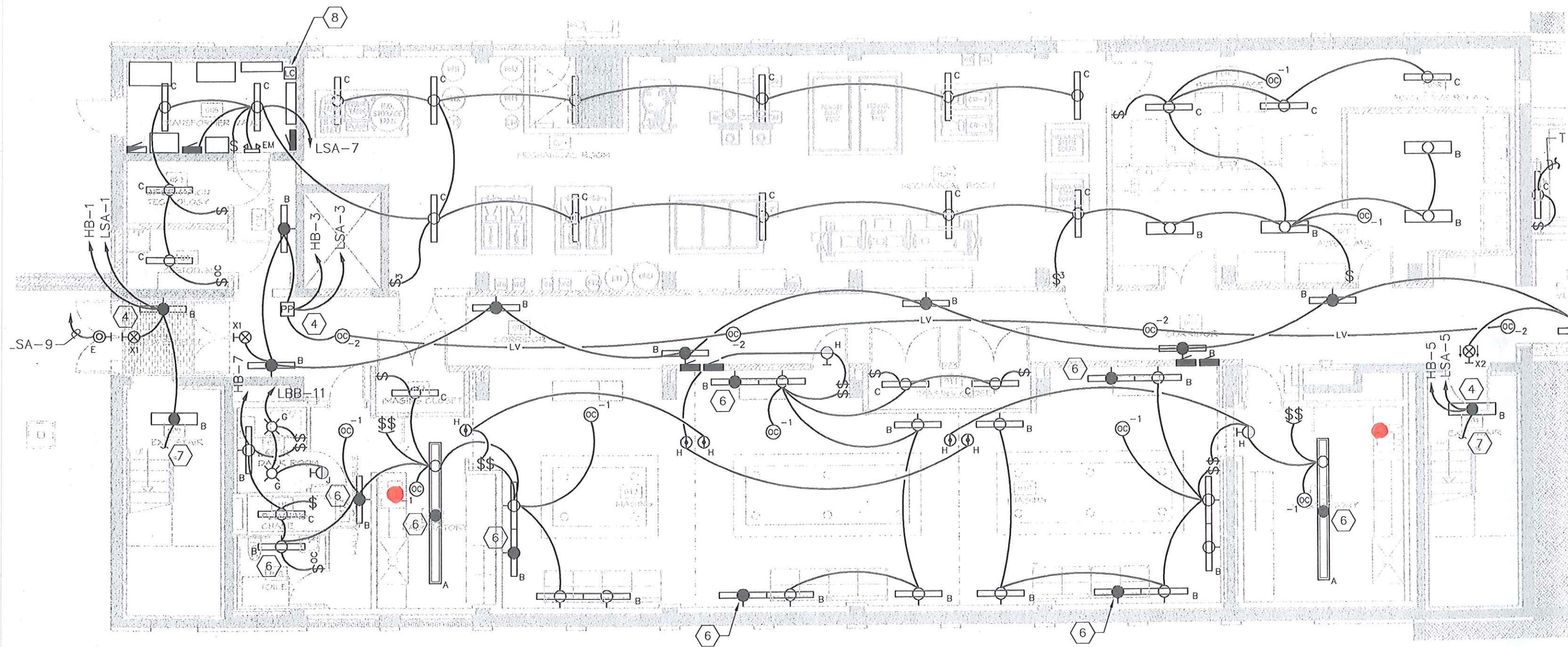
Scope of work includes; Division 16

At each lab sink location as indicated on the drawings, provide a new suspended monopoint light fixture, to be switched with the outer two lamps of the existing light fixtures. Fixture shall be Spectrum Lighting, model #SPC1205CF-226-EX-8310SG-CDx3-MW with (2) 26 watt triple tube lamps, 4100K color temperature. Extend conduit and wiring from nearest lighting junction box to location directly above sink

SEE ATTACHED RFP86 sheets -1 Through 6

This RFP is for pricing purposes only. The contractor shall not proceed with the scope of work described within until pricing is approved by the owner in writing.

Distribution: Owner Architect Engineer
 Agency Contractor Other

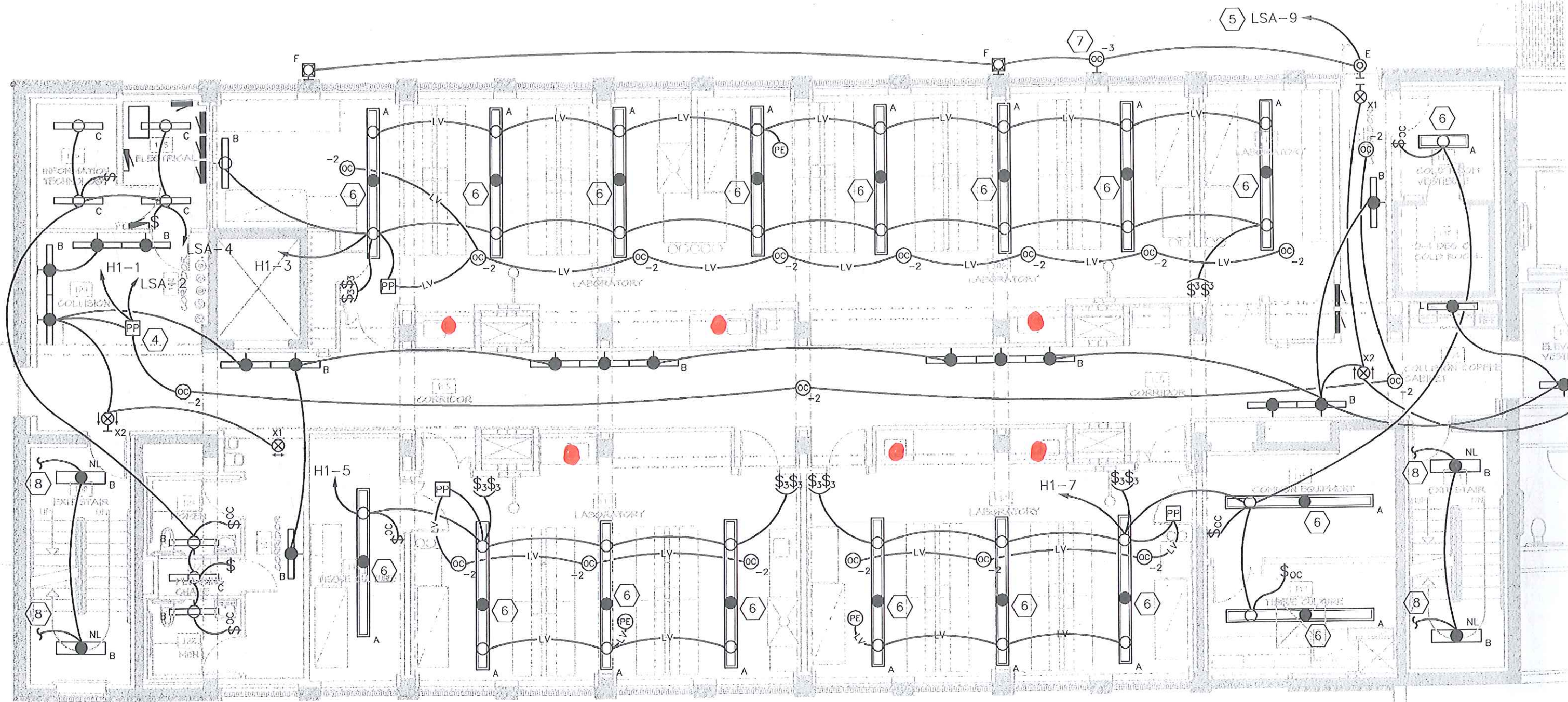


COOLEY ADDITIONAL LIGHTING



**BASEMENT FLOOR
LIGHTING REMODEL PLAN**
 SCALE: 1/8"=1'-0"

RFP86-1

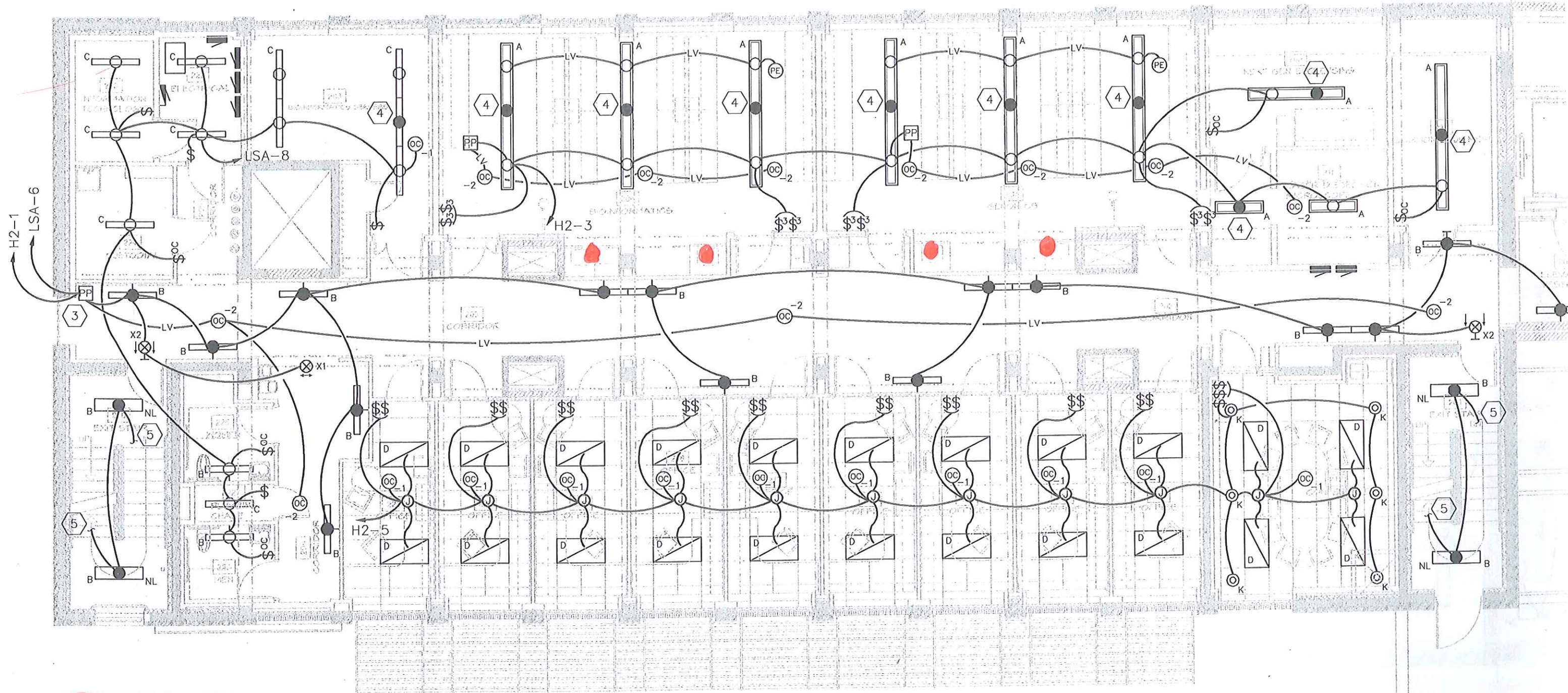


COOLEY ADDITIONAL LIGHTING



FIRST FLOOR LIGHTING REMODEL PLAN
 SCALE: 1/8"=1'-0"

RFP86-2

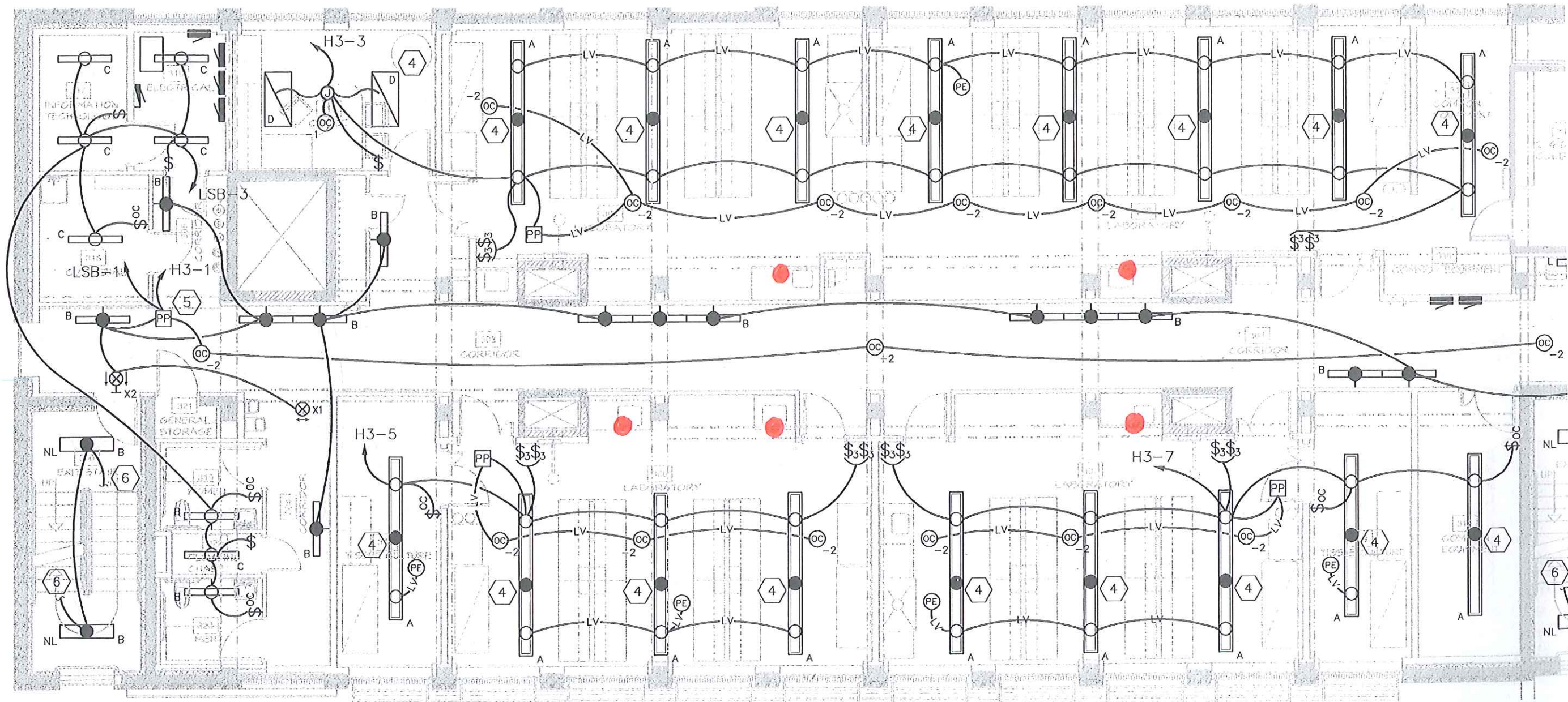


COOLEY ADDITIONAL LIGHTING

SECOND FLOOR
LIGHTING REMODEL PLAN

RFP86-3

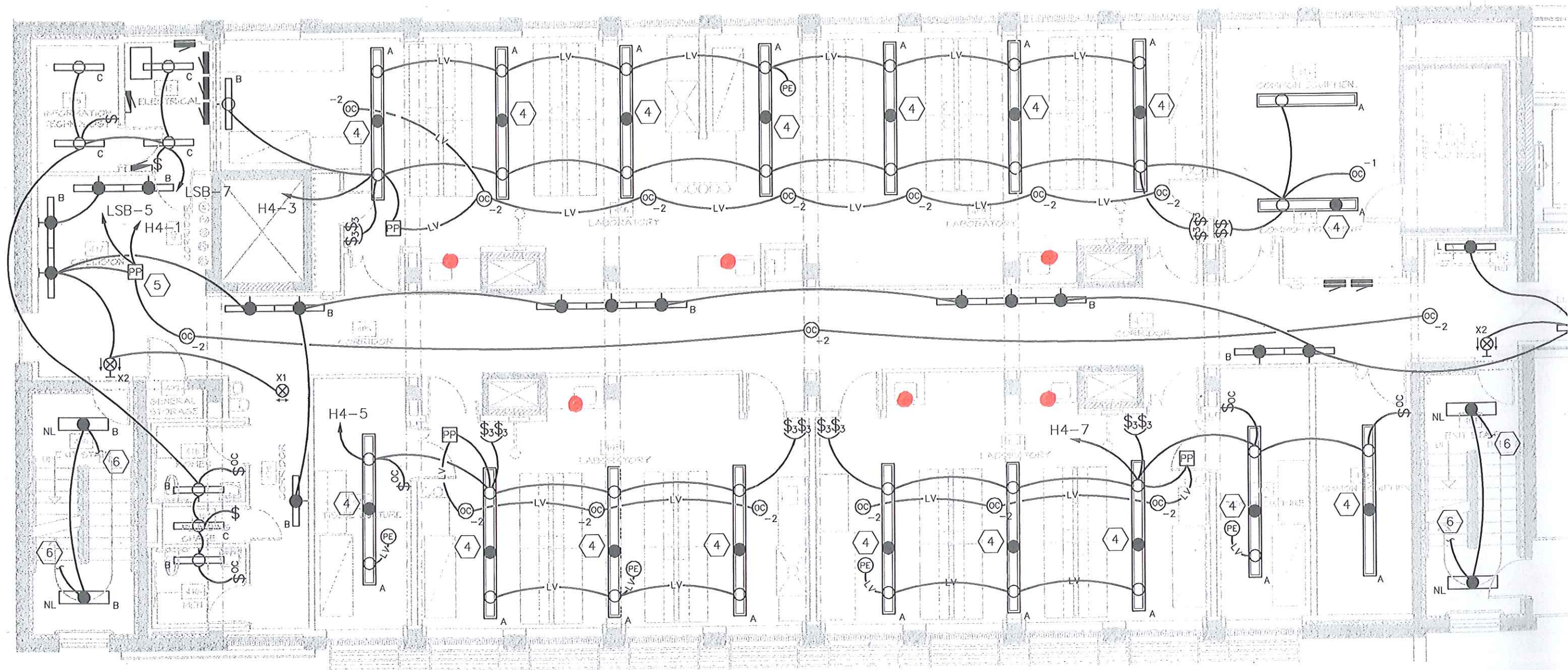




COOLEY ADDITIONAL LIGHTING

RFP86-4

THIRD FLOOR
LIGHTING REMODEL PLAN



COOLEY ADDITIONAL LIGHTING FOURTH FLOOR

RFP86-5



LIGHTING REMODEL PLAN

SCALE: 1/8"=1'-0"

12" CYLINDER SERIES OPEN 12" ROUND 2 x 42 WATT MAX CF

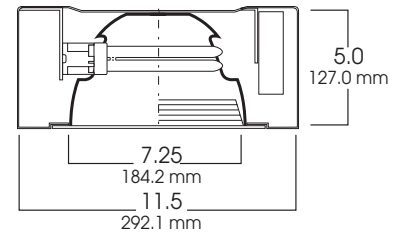
SPC12 SPECTRUM CYLINDERS



PRODUCT INFORMATION:

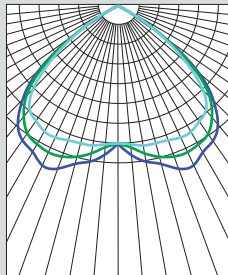
- 12" round shallow cylinder series for use with compact fluorescent lamps.
- Spun aluminum cylinder.
- 2 x 42 watt max triple tube compact fluorescent lamp.
- 20 powder coat options.
- Suitable for damp locations.
- Manufactured and tested to UL standard No. 1598.

MOUNTING



Fixture Weight: 7.5 lbs

DISTANCE FROM CEILING		DIAMETER OF CIRCLE
5.5	23	13.0
7.5	12	18.0
9.5	8	23.0
11.5	5	27.0
13.5	4	32.0



CONE OF LIGHT

226w-Efficiency: 55.4%
Spacing: 1.69

SERIES	WATTS	BALLAST	OPTIONS	REFLECTOR	MOUNTING	FINISH
SPC1205CF - Compact Fluorescent Shallow Spectrum Cylinder	(1 or 2) 13 (1 or 2) 18 (1 or 2) 26 (1 or 2) 32 (1 or 2) 42	EX -Electronic 120v / 277v (standard)	FS -Fuse holder and fuse EMIT -Emergency Integral Switch (specify voltage) EMENC -Remote Ballast Enclosure CP113 -Ceiling Surface Enclosure	8310-SG -Soft Glow Alzak CC -Custom Color BB -Black Micro Baffle WB -White Micro Baffle * 8300 -for 2 lamp (13w-26w Q) * 8310 -for 2 lamp (26w T -42w) * 8315 -for 1 lamp (13w-42w) Q : Quad T : Triple Tube	HM* -Hang-Straight Mounting HMAT** -Field Cutable Length Hang Straight Pendant PM* -Pendant Mount SM -Surface Mount CDx3 -3 Aircraft Cable & Cord * Specify Length in inches **12" or 36" lengths only See Cylinder Mounting Page for Additional Information	GW -Gloss White GB -Gloss Black MW -Matte White MB -Matte Black BZ -Bronze PT -Platinum Silver MT -Mini Tek Silver TW -Textured White CC -Custom Color
SPC1205CF	226	EX	FS	8310 SG	HM36	GW

Dimensions shown are nominal. Spectrum Lighting is continually improving products and reserves the right to make changes that will not alter performance or appearance with or without written notice.



PROJECT:

TYPE:

CAT. NO.:



994 Jefferson Street, Fall River, MA 02721 508.678.2303 FAX 508.678.2260

RFP86-6