

REQUEST FOR PROPOSAL

Project Title: Cooley Laboratory Renovation
Location: Montana State University

PPA No.: 10-0023
RFP No.: 76r
Date: November 1, 2012

To: Dick Anderson Construction
4498 Jackrabbit Lane
Bozeman, MT 59718

Attention: Platisha

From: Cecilia Vaniman, Project Manager
Cooley Lab Renovation
Montana State University

Attention: _____

In order to expedite the Work and avoid or minimize delays in the Work the following information is requested. Please return a response by: 11/08/2012 Date Sent: 11/01/2012
Date Received: _____

Proposal Requested:

PROVIDE ADDITIONAL UTILITIES AND EQUIPMENT @ AUTOCLAVE 008

Scope of work includes; Division 11, 13, 15-16

- Provide Washer as specified. Includes connection to ICW IHW and IW IV as shown Electrical as required.
- Provide Dryer as specified. Including Electrical and Venting as required.\
- Provide RO wall mounted water faucet @ Scullery sink in location shown .
- Relocate O2 sensor as shown.
- Provide Stainless steel shelving

ALTERNATE AND SEPARATE PRICING FOR;
Dishwasher and all connections required.
Stainless steel carts.

SEE ATTACHED Kitchen Aid Dishwasher specification - Whirlpool Washer & Dryer Specification
Water Saver RO Faucet.

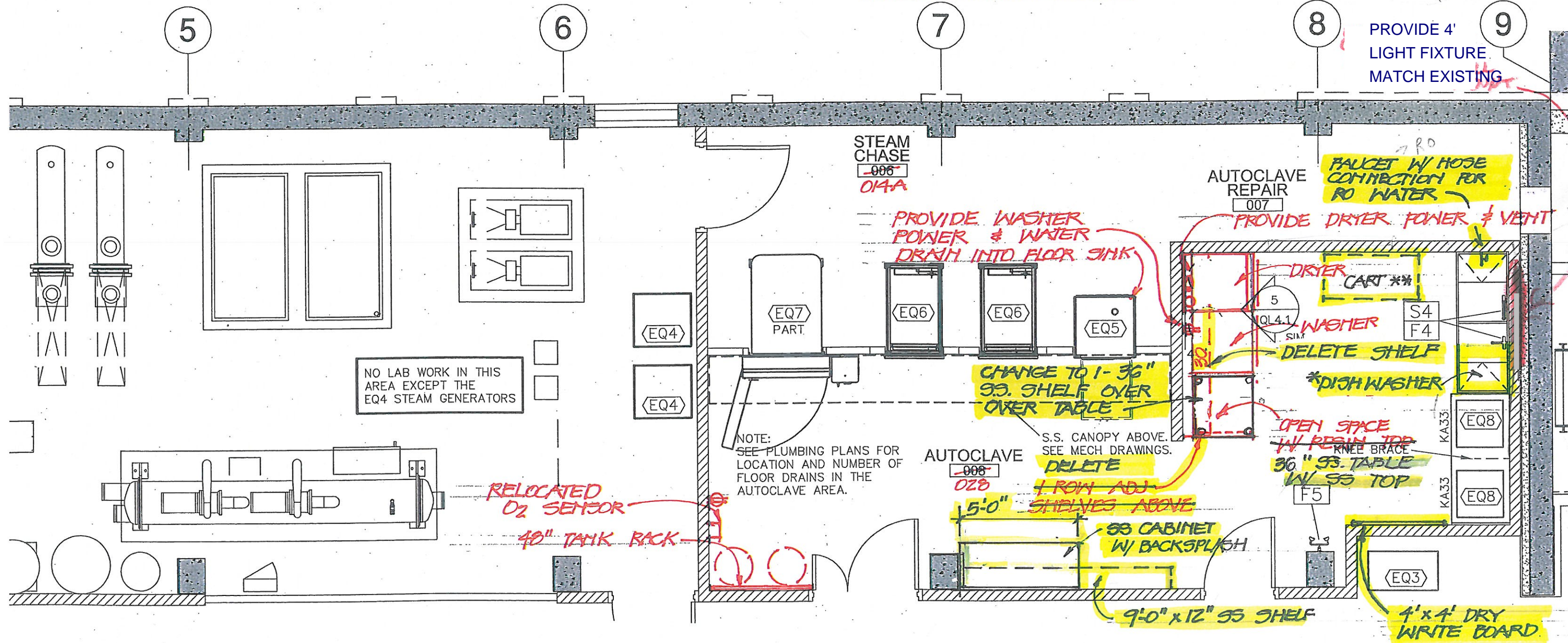
This RFP is for pricing purposes only. The contractor shall not proceed with the scope of work described within until pricing is approved by the owner in writing.

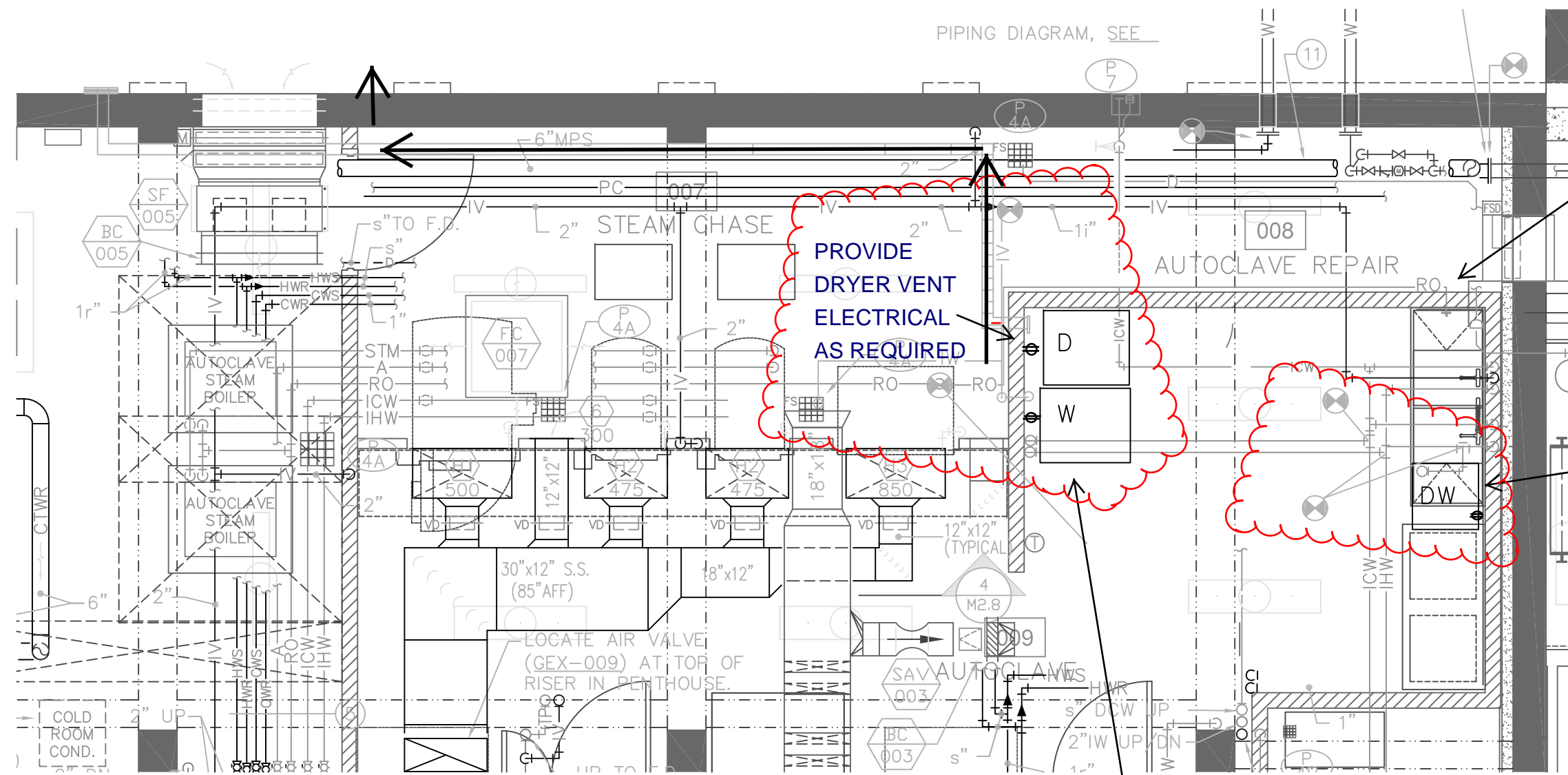
Distribution: Owner Architect Engineer
 Agency Contractor Other

* DISH WASHER - KITCHENAID
KUDG101XSS - PROVIDE
SS SURROUND - FIT UNDER
CULLERY SINK

** 2'-0" x 4'-0" SS CART
2 SHELVES W/ LOCKING
WHEELS IN AUTOCLAVE
ROOM

PROVIDE 4'
LIGHT FIXTURE
MATCH EXISTING





PIPING DIAGRAM, SEE

PROVIDE RO AS SHOWN TO NEW WALL MOUNT FAUCET

PROVIDE DRYER VENT ELECTRICAL AS REQUIRED

PROVIDE 3/8" IHW PROVIDE WASTE ELECTRICAL AS REQUIRED CONNECTION TO SCULLERY SINK FOR DISHWASHER

PROVIDE CONNECTIONS & PIPING FOR WASHER - 1/2" (ICW - IHW) - 1 1/2" (IW - IV) ELECTRICAL AS REQUIRED



THE INSIDE ADVANTAGE™ PROMISE

By aligning our portfolio to powerful brands and innovative products with deep consumer insight and targeted services, Whirlpool Corporation provides a partnership environment to help building professionals grow their businesses.

PREPARED FOR
Client: N/A

PROVIDED BY
Builder: N/A
Sales Person: N/A
Phone: N/A
Email: N/A




FOR THE WAY IT'S MADE.®






KUDC10IXSS Stainless Steel

OTHER AVAILABLE COLORS

 **Black**
Model: KUDC10IXBL

 **White**
Model: KUDC10IXWH



DIMENSIONS		KEY FEATURES
Height	34 1/2 Inches	Rinse Only cycle rinses dishes, glasses, and silverware being held between loads and helps control soil and odor One Hour Wash cycle completely washes loads in one hour Manual adjusters on either side of the upper rack make it simple to move the rack to pre-set positions Whisper Quiet® (52 dBA) Sound Insulation System helps maintain a quiet home during operation 2 1/2-inch flush console puts all the controls at your fingertips and features a seamless, sleek design ENERGY STAR® Qualified - Tier II
Depth	24 1/2 Inches	
Width	23 7/8 Inches	
Dimensions shown are for planning purposes only. For complete information, see Installation Instructions packaged with product.		
ELECTRICAL		
288 kWh per Year,		
Before purchasing this appliance, read important information about its estimated annual energy consumption or energy efficiency rating that is available from your dealer.		

KitchenAid® Undercounter Dishwasher

PRODUCT MODEL NUMBERS

KUDC10FX	KUDE60SX
KUDC10IX	KUDE70FX
KUDE20FX	KUDL15FX
KUDE20IX	KUDS30CX
KUDE40FX	KUDS30FX
KUDE48FX	KUDS30IX
KUDE50CX	KUDS30SX
KUDE60FX	KUDS35FX
KUDE60HX	

Electrical Requirements: 120-volt, 60-Hz, AC-only, 15- or 20-amp. fused electrical supply. Copper wire only. A timedelay fuse or circuit breaker and separate circuit is recommended.

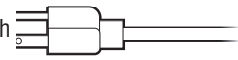
If direct wiring dishwasher: Use flexible, armored or nonmetallic, sheathed copper wire with grounding wire that meets the wiring requirements for your home and local codes and ordinances.



Use a U.L.-listed or CSA-approved conduit connector.

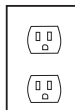
If connecting dishwasher with a power supply cord:

Use Power Supply Cord Kit (Part No. 4317824) marked for use with



dishwashers. Follow the kit instructions for installing the power supply cord.

Power supply cord must plug into a grounded three-prong, outlet, located in the cabinet next to the dishwasher opening. Outlet must meet all local codes and ordinances.



Water Supply Requirements: A hot water line with 20 to 120 psi (138 to 862 kPa) water pressure. Water temperature must be 120°F (49°C) water at dishwasher. Use 3/8" O.D. copper tubing with compression fitting or flexible braided water supply line (1/2" minimum plastic tubing is not recommended). Use a 90° elbow with 3/4" N.P.T. external pipe threads on one end. Do not solder within 6" (15.2 cm) from water inlet valve.

Drain Requirements: A new drain hose is supplied with your dishwasher. If this is not long enough, use a new drain hose with a maximum length of 12' (3.7 m) (Part No. 3385556) that meets all current AHAM/IAPMO test standards, is resistant to heat and detergent, and fits the 1" (2.5 cm) drain connector of the dishwasher.

Make sure to connect the drain hose to waste tee or disposer inlet above drain trap in house plumbing and 20" (50.8 cm) minimum above the floor. It is recommended

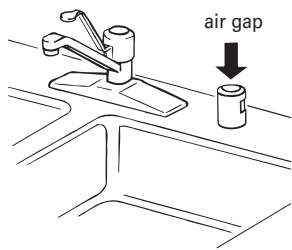
that the drain hose either be looped up and securely fastened to the underside of the counter, or be connected to an air gap.

Make sure to use an air gap if the drain hose is connected to house plumbing lower than 20" (50.8 cm) above subfloor or

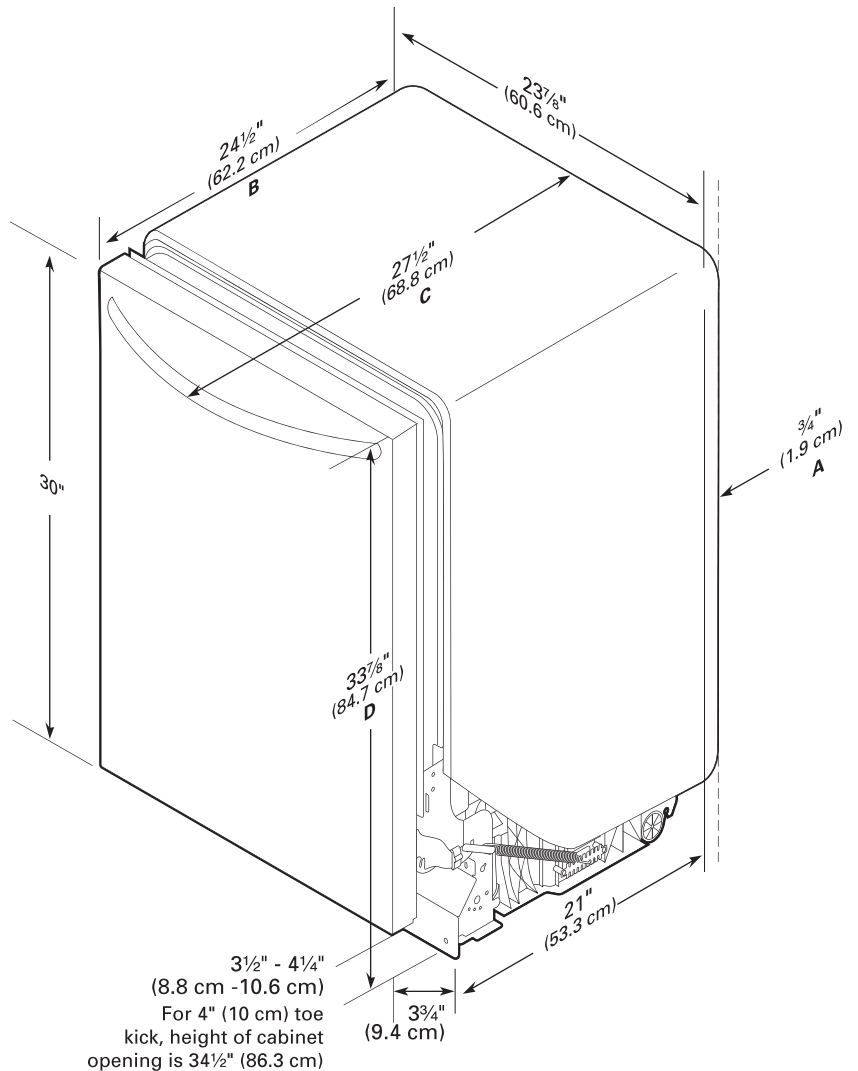
floor.

Use 1/2" (1.3 cm) minimum I.D. drain line fittings.

If required, the air gap should be installed in accordance with the air gap installation instructions. When connecting the air gap a rubber hose (not provided) will be needed to connect to the waste tee or disposer inlet.



PRODUCT DIMENSIONS

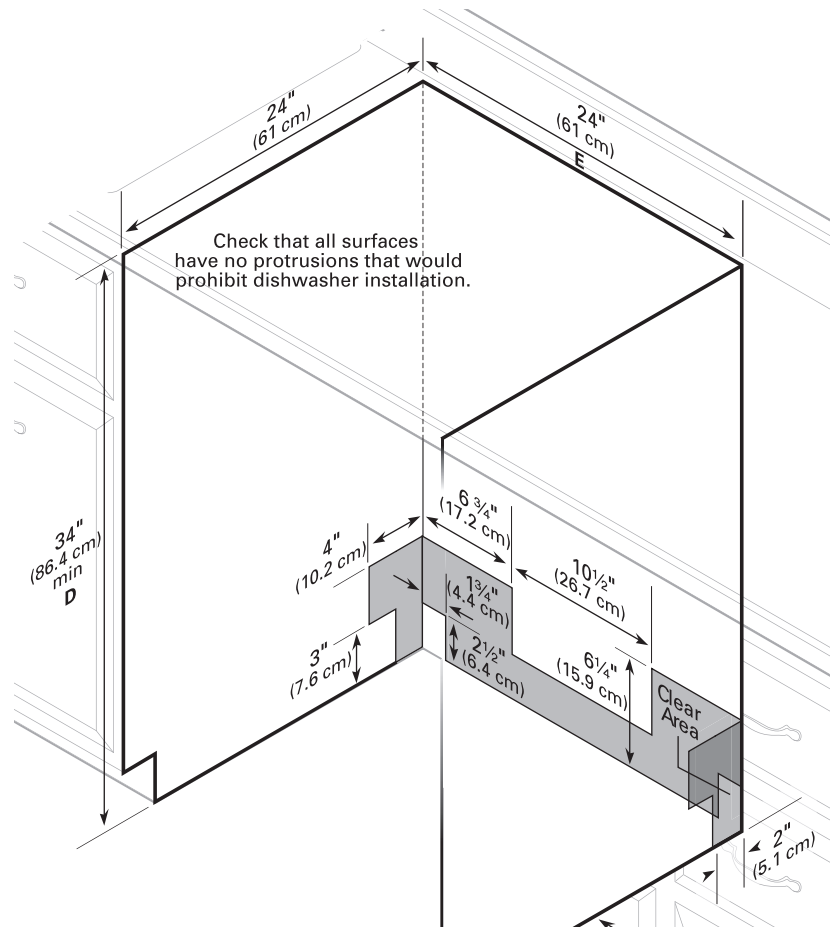


- A. Insulation may be compressed. (not used on all models)
- B. For panel ready models, dishwasher depth is 24" (60 cm) not including the 3/4" (1.9 cm) custom door panel.
- C. For Pro Line® handle, depth is 28" (70 cm).

CABINET CUTOUT DIMENSIONS

NOTE: Shaded areas of cabinet walls show where utility connections may be installed.

- D.** Measured from the lowest point on the underside of countertop. May be reduced to $33\frac{7}{8}$ " (86 cm) by removing wheels from dishwasher, or $33\frac{3}{4}$ " (85.7 cm) by removing wheels AND perforated section in the insulation blanket.
- E.** Minimum, measured from narrowest point of opening.



Whirlpool® 4.3 cu. ft. Duet® Front Load Washer with Fan Fresh option

Send Page to Printer



WFW94HEXW

Whirlpool® 4.3 cu. ft. Duet® Front Load Washer with Fan Fresh option



MSRP: \$1,299.00

MAJOR APPLIANCE

DISCONTINUED

[Specifications](#) [Product Literature](#)
[Electrical Requirements](#)

Available Colors

White
Model: WFW94HEXW
CLOSEOUT
MAJOR APPLIANCE
DISCONTINUED

Larger View

AVAILABLE IMAGES 1



Related Products



8212487RP
5' Industrial Grade Nylon Braid Fill Hoses - 2 Pack



W10135699
Affresh™ Washer Cleaner



CLOSEOUT
WED94HEXW
Whirlpool® Duet® High Efficiency Electric Dryer with Quick Refresh steam cycle



CLOSEOUT
WGD94HE
Whirlpool® Duet® High Efficiency Gas Dryer with Refresh Steam

Dimensions

Height	38 1/2 Inches	Dimensions shown are for planning purposes only. For complete information, see Installation Instructions packed with product.
Depth	32 3/4 Inches	
Width	27 Inches	
Gross Weight	243 LB	

Key Features

- FanFresh™ Option for up to 16 Hours
- Quiet Spin 360 Technology [more](#)
- Smart Temperature Control Helps Reduce Shrinking and Color Bleeding [more](#)
- Responsive Technology Saves You Water, Energy and Money [more](#)
- Keep Operational Sounds Inside the Washer [more](#)
- Rated a "Recommended Buy" by a leading consumer magazine
- 4.3 cu. ft. Stainless Steel Wash Basket
- EcoBoost Option [more](#)
- ENERGY STAR® Qualified [more](#)
- CEE Tier III Qualified [more](#)
- Direct Inject Wash System [more](#)
- Precision Dispense [more](#)
- Care Control Temperature Management [more](#)

Specifications

Construction

Drum Material: Stainless Steel wash basket

Performance

Dispenser Type: 3-Tray Dispenser Drawer

Temperature Control System: Care Control Temperature Management

Number of Temperatures: 5

Spin Speed: 1400

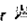
Number of Chambers: 3

Detergent Dispenser	Yes
Tier Level	CEE Tier III level
Number of Cycles	10
Whitest Whites Cycle	Yes
Heavy Duty Wash	Yes
Normal Wash	Yes
Quick Wash	Yes
Delicate Wash	Delicates
Hand Wash	Yes
Extra Rinse	Yes
Estimated Time Remaining	Yes
Control Lockout	Yes
Dimensions	
Height	38 1/2 Inches
Width	27 Inches
General	
ADA Compliant	ADA Height and Side and Front Reach Compliant

- 10 Automatic Cycles
- 5 Temperature Settings
- 14 Adaptive Wash Actions
- NSF Certified Sanitize Temperature
- 1,400 RPM Maximum Spin Speed
- Quiet Wash Ultra Noise Reduction System
- Direct Drive Motor [more](#)
- Stainless Steel Wash Basket [more](#)
- Delay Wash (up to 12 Hours)
- Internal Water Heater
- Delicate Cycle [more](#)
- Normal/Casual Cycle
- Quick Wash Cycle [more](#)
- Bulky Items Cycle [more](#)
- Whitest Whites Cycle [more](#)
- On/Off Extra Rinse Option
- Cradle Clean™ Technology [more](#)
- Automatic Water Level Control [more](#)
- Add-A-Garment Indicator Light [more](#)
- Estimated Time Remaining Display
- LED Display [more](#)
- Deep Clean Option
- Allergen Cycle [more](#)

Product Literature

- [Owners Manual \(9299.05 KB\)](#)
- [Dimension Guide \(637.15 KB\)](#)
- [Installation Instructions \(5876.53 KB\)](#)
- [Energy Guide \(372.65 KB\)](#)
- [Warranty \(406.82 KB\)](#)

You may need to install Adobe Acrobat Reader  to view these documents.

UPC Listing

Model "WFW94HEXW" UPC: 883049190242

Whirlpool® Duet® High Efficiency Electric Dryer with Quick Refresh steam cycle

[Send Page to Printer](#)



WED94HEXW

Whirlpool® Duet® High Efficiency Electric Dryer with Quick Refresh steam cycle

MSRP: \$1,299.00

MAJOR APPLIANCE

DISCONTINUED

[Specifications](#) [Product Literature](#)
[Electrical Requirements](#)

Available Colors

- White**
Model: WED94HEXW
CLOSEOUT
MAJOR APPLIANCE
DISCONTINUED

[Larger View](#)

AVAILABLE IMAGES **1**



Related Products



PT400L
4' 4-Wire 30 amp Dryer Cord



CLOSEOUT
WFW95HEXW
Whirlpool® 4.3 cu. ft. Duet® Front Load Washer with Steam



XHPC155XW
Laundry 123® 15.5" Laundry Pedestal with Chrome Handle and Storage Drawer



PT220L
4' 3-Wire 30 amp Dryer Cord

Dimensions

Height	38 1/8 Inches	Dimensions shown are for planning purposes only. For complete information, see Installation Instructions packed with product.
Depth	31 1/8 Inches	
Width	27 Inches	
Gross Weight	160 LB	

Key Features

- 7.4 Cu. Ft. Capacity
- Quick Refresh Steam Cycle [more](#)
- Wrinkle Shield™ Plus Option (up to 120 minutes) [more](#)
- Quiet Dry Plus Noise Reduction System [more](#)
- Direct Water Installation Method [more](#)
- 8 Automatic Cycles
- 5 Temperature Settings
- Heavy Duty Cycle
- Y-Connector
- Normal Cycle
- Delicate Cycle
- Quick Dry Cycle
- Timed Drying
- Quad Baffle Drying System

Specifications

Capacity

Total Capacity: 7.4 Cu. Ft.

Construction

Top Finish: Painted

Drum Material: Stainless Steel

Reversible Door: Reversible Side-Swing Door

Controls

Controls: Electronic Control

Performance

Drum Light	LED Auto/Selectable
Lint Screen Location	Door
Number of Cycles	8
Heavy Duty	Eco Heavy Duty
Bulky	Eco Bulky Items
Wrinkle Control Time	120 Minutes
Damp Dry	Yes
Timed Dry	Yes
Quick Dry	Yes
Steam Refresh	Quick Refresh
Wrinkle Guard	Wrinkle Shield
End of Cycle Signal	Off / Soft / Loud End Of Cycle Signal
Dimensions	
Height	38 1/8 Inches
Width	27 Inches
Depth	31 1/8 Inches
General	
ADA Compliant	ADA Height and Side and Front Reach Compliant

- LED Display [more](#)
- Reversible Door
- Adjustable End-of-Cycle Signal
- Estimated Time Remaining Display
- 6th Sense™ technology [more](#)
- Stainless Steel Drum
- Interior Drum Light [more](#)
- EcoBoost™ option [more](#)
- Advanced Moisture Sensing System [more](#)

Product Literature

- [Owners Manual \(8431.00 KB\)](#)
- [Dimension Guide \(431.06 KB\)](#)
- [Installation Instructions \(7431.24 KB\)](#)
- [Warranty \(310.05 KB\)](#)

You may need to install Adobe Acrobat Reader ²⁴ to view these documents.

Electrical Requirements

30Amps. 60Hz. 240V.

UPC Listing

Model "WED94HEXW" UPC: 883049190174

CHAPTER 5 EXHAUST SYSTEMS

SECTION 504

CLOTHES DRYER EXHAUST

504.1 Installation. Clothes dryers shall be exhausted in accordance with the manufacturer's instructions. Dryer exhaust systems shall be independent of all other systems and shall convey the moisture and any products of combustion to the outside of the building.

Exception: This section shall not apply to listed and labeled condensing (ductless) clothes dryers.

504.2 Exhaust penetrations. Where a clothes dryer exhaust duct penetrates a wall or ceiling membrane, the annular space shall be sealed with noncombustible material, approved fire caulking or a noncombustible dryer exhaust duct wall receptacle. Ducts that exhaust clothes dryers shall not penetrate or be located within any fire-blocking, draftstopping or any wall, floor/ceiling or other assembly required by the International Building Code to be fire-resistance rated, unless such duct is constructed of galvanized steel or aluminum of the thickness specified in Section 603.4 and the fire-resistance rating is maintained in accordance with the International Building Code. Fire dampers, combination fire/smoke dampers and any similar devices that will obstruct the exhaust flow shall be prohibited in clothes dryer exhaust ducts.

504.3 Cleanout. Each vertical riser shall be provided with a means for cleanout.

504.4 Exhaust installation. Dryer exhaust ducts for clothes dryers shall terminate on the outside of the building and shall be equipped with a backdraft damper. Screens shall not be installed at the duct termination. Ducts shall not be connected or installed with sheet metal screws or other fasteners that will obstruct the exhaust flow. Clothes dryer exhaust ducts shall not be connected to a vent connector, vent or chimney. Clothes dryer exhaust ducts shall not extend into or through ducts or plenums.

504.5 Makeup air. Installations exhausting more than 200 cfm (0.09m³/s) shall be provided with makeup air. Where a closet is designed for the installation of a clothes dryer, an opening having an area of not less than 100 square inches (0.0645 m²) shall be provided in the closet enclosure or makeup air shall be provided by other approved means.

504.6 Domestic clothes dryer ducts. Exhaust ducts for domestic clothes dryers shall conform to the requirements of Sections 504.6.1 through 504.6.7.

504.6.1 Material and size. Exhaust ducts shall have a smooth interior finish and shall be constructed of metal a minimum 0.016 inch (0.4 mm) thick. The exhaust duct size shall be 4 inches (102 mm) nominal in diameter.

504.6.2 Duct installation. Exhaust ducts shall be supported at 4-foot (1219 mm) intervals and secured in place. The insert end of the duct shall extend into the adjoining duct or fitting in the direction of airflow. Ducts shall not be joined with screws or similar fasteners that protrude into the inside of the duct.

504.6.3 Transition ducts. Transition ducts used to connect the dryer to the exhaust duct system shall be a single length that is listed and labeled in accordance with UL 2158A. Transition ducts shall be a maximum of 8 feet (2438 mm) in length and shall not be concealed within construction.

504.6.4 Duct length. The maximum allowable exhaust duct length shall be determined by one of the methods specified in Section 504.6.4.1 or 504.6.4.2.

504.6.4.1 Specified length. The maximum length of the exhaust duct shall be 35 feet (10 668 mm) from the connection to the transition duct from the dryer to the outlet terminal. Where fittings are used, the maximum length of the exhaust duct shall be reduced in accordance with Table 504.6.4.1

TABLE 504.6.4.1

DRYER EXHAUST DUCT FITTING EQUIVALENT LENGTH

Dryer Exhaust Duct Fitting Type	Equivalent Length
4" radius mitered 45 degree elbow	2 feet 6 inches
4" radius mitered 90 degree elbow	5 feet
6" radius smooth 45 degree elbow	1 foot
6" radius smooth 90 degree elbow	1 foot 9 inches
8" radius smooth 45 degree elbow	1 foot
8" radius smooth 90 degree elbow	1 foot 7 inches
10" radius smooth 45 degree elbow	9 inches
10" radius smooth 90 degree elbow	1 foot 6 inches

For SI: 1 inch = 25.4 mm, 1 foot = 304.8 mm, 1 degree = 0.0175 rad.

504.6.4.2 Manufacturer's instructions. The maximum length of the exhaust duct shall be determined by the dryer manufacturer's installation instructions. The code official shall be provided with a copy of the installation instructions for the make and model of the dryer. Where the exhaust duct is to be concealed, the installation in-

structions shall be provided to the code official prior to the concealment inspection. In the absence of fitting equivalent length calculations from the clothes dryer manufacturer, Table 504.6.4.1 shall be used.

504.6.5 Length identification. Where the exhaust duct is concealed within the building construction, the equivalent length of the exhaust duct shall be identified on a permanent label or tag. The label or tag shall be located within 6 feet (1829 mm) of the exhaust duct connection.

504.6.6 Exhaust duct required. Where space for a clothes dryer is provided, an exhaust duct system shall be installed. Where the clothes dryer is not installed at the time of occupancy, the exhaust duct shall be capped at the location of the future dryer. Exception: Where a listed condensing clothes dryer is installed prior to occupancy of structure.

504.6.7 Protection required. Protective shield plates shall be placed where nails or screws from finish or other work are likely to penetrate the clothes dryer exhaust duct. Shield plates shall be placed on the finished face of all framing members where there is less than 1 1/4 inches (32 mm) between the duct and the finished face of the framing member. Protective shield plates shall be constructed of steel, have a thickness of 0.062 inch (1.6 mm) and extend a minimum of 2 inches (51 mm) above sole plates and below top plates.

504.7 Commercial clothes dryers. The installation of dryer exhaust ducts serving Type 2 clothes dryers shall comply with the appliance manufacturer's installation instructions. Exhaust fan motors installed in exhaust systems shall be located outside of the airstream. In multiple installations, the fan shall operate continuously or be interlocked to operate when any individual unit is operating. Ducts shall have a minimum clearance of 6 inches (152 mm) to combustible materials. Clothes dryer transition ducts used to connect the appliance to the exhaust duct system shall be limited to single lengths not to exceed 8 feet (2438 mm) in length and shall be listed and labeled for the application. Transition ducts shall not be concealed within construction.

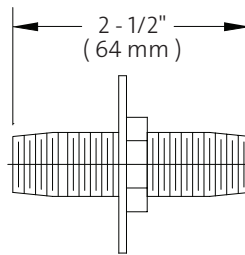
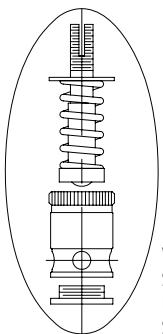
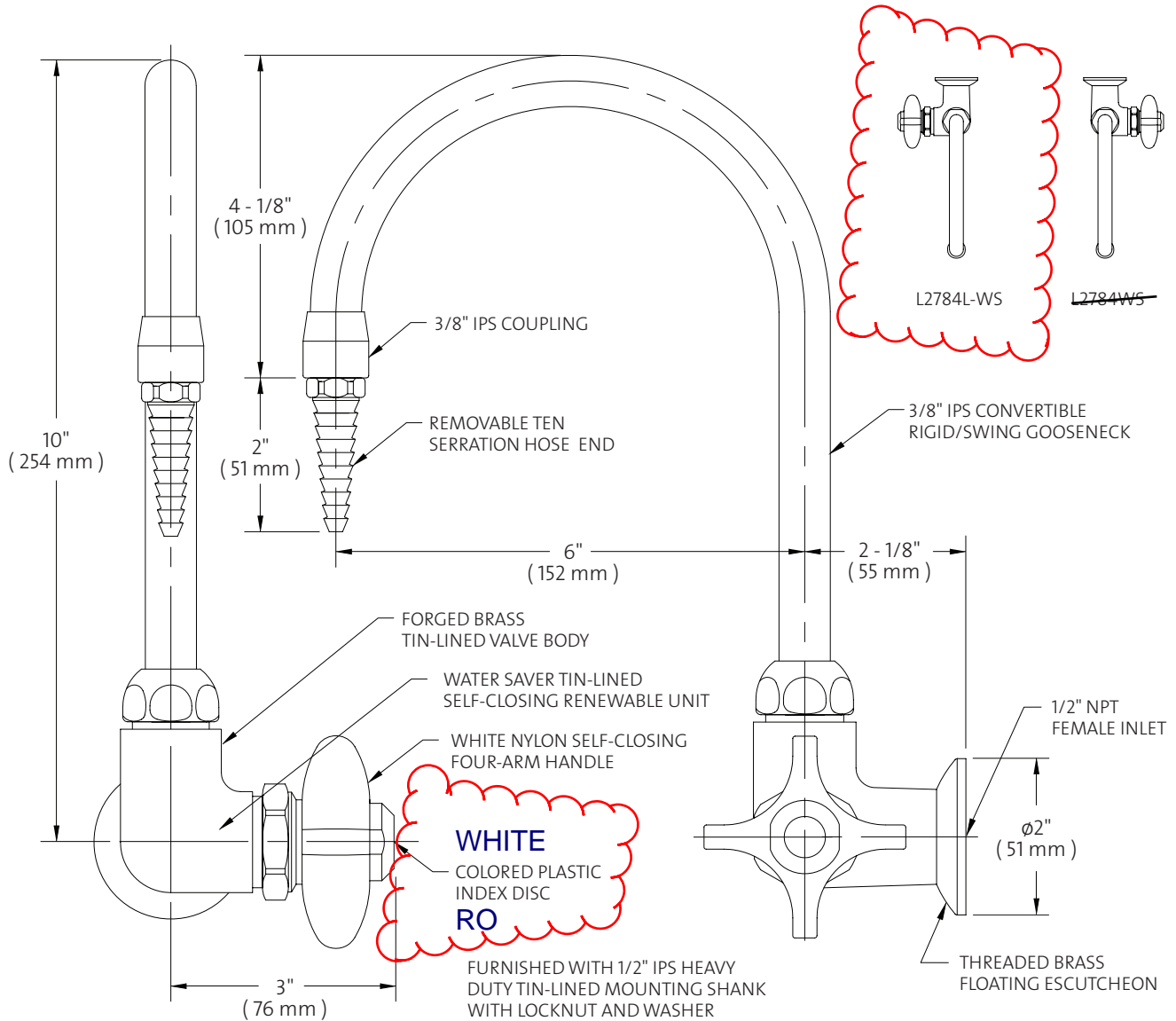
504.8 Common exhaust systems for clothes dryers located in multistory structures. Where a common multistory duct system is designed and installed to convey exhaust from multiple clothes dryers, the construction of the system shall be in accordance with all of the following:

1. The shaft in which the duct is installed shall be constructed and fire-resistance rated as required by the International Building Code.
2. Dampers shall be prohibited in the exhaust duct.

Penetrations of the shaft and ductwork shall be protected in accordance with Section 607.5.5, Exception 2.

3. Rigid metal ductwork shall be installed within the shaft to convey the exhaust. The ductwork shall be constructed of sheet steel having a minimum thickness of 0.0187 inch (0.4712 mm) (No. 26 gage) and in accordance with SMACNA Duct Construction Standards.
4. The ductwork within the shaft shall be designed and installed without offsets.
5. The exhaust fan motor design shall be in accordance with Section 503.2.
6. The exhaust fan motor shall be located outside of the airstream.
7. The exhaust fan shall run continuously, and shall be connected to a standby power source.
8. Exhaust fan operation shall be monitored in an approved location and shall initiate an audible or visual signal when the fan is not in operation.
9. Makeup air shall be provided for the exhaust system.
10. A cleanout opening shall be located at the base of the shaft to provide access to the duct to allow for cleaning and inspection. The finished opening shall be not less than 12 inches by 12 inches (305 mm by 305 mm).
11. Screens shall not be installed at the termination.

L2784WS Pure Water Faucet, Tin-Lined Brass, Panel Mounted, Self-Closing Control, 6" Rigid/Swing Gooseneck, Mounting Shank



- NOTES:
1. FIXTURE HAS INTERIOR LINING OF PURE TIN.
 2. FIXTURE HAS FEMALE INLET FOR CONNECTION TO SUPPLY. FLOATING ESCUTCHEON IS THREADED TO WALL TO CONCEAL ANY GAP BETWEEN FIXTURE AND WALL.
 3. FIXTURE IS FULLY ASSEMBLED (WITH MOUNTING SHANK LOOSE) AND FACTORY TESTED PRIOR TO SHIPMENT. IF MOUNTING SHANK IS TO BE ASSEMBLED, USE SUFFIX "WSA".
 4. UNLESS OTHERWISE SPECIFIED, FIXTURE IS FURNISHED IN RIGHT HAND CONFIGURATION.

Measurements may vary ± 1/4".

© 2008 / WaterSaver Faucet Co.