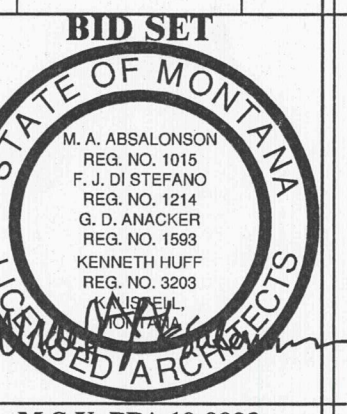


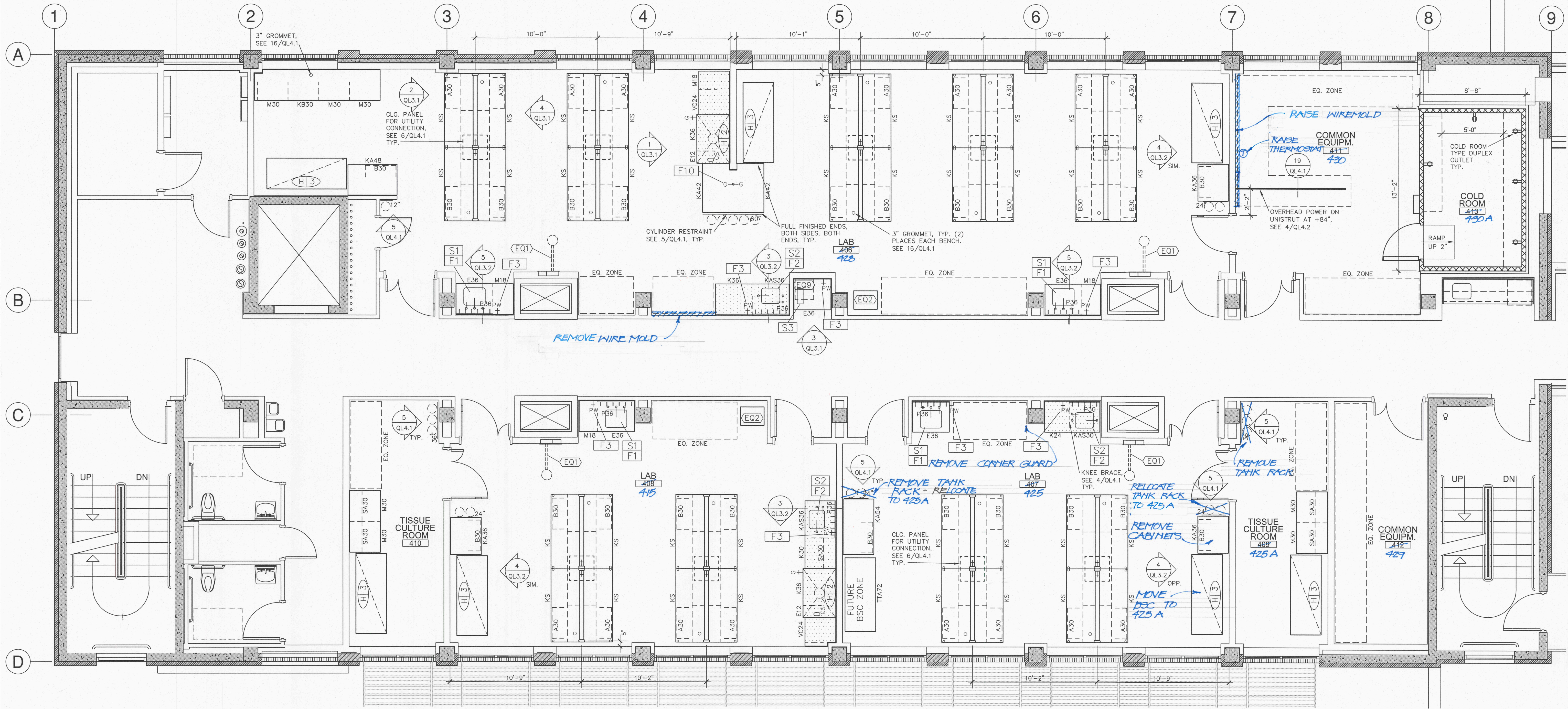
DRAWN BY:	GB
CHECKED BY:	MO
APPROVED BY:	NW
REV/DESCRIPTION	DATE
NH SD/00	07.23.2010
NH CD	12.01.2010
NH FINAL	03.14.2011



M.S.U. PPA 10-0023
 ADG 10-020
 FOURTH FLOOR
 LABORATORY
 PLAN

QL1.4

March 14, 2011

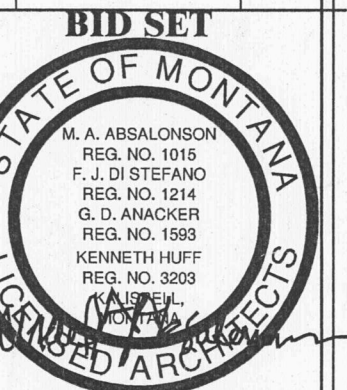


RFP75-4.D.0

DEMO MODIFICATIONS 9-14-2012



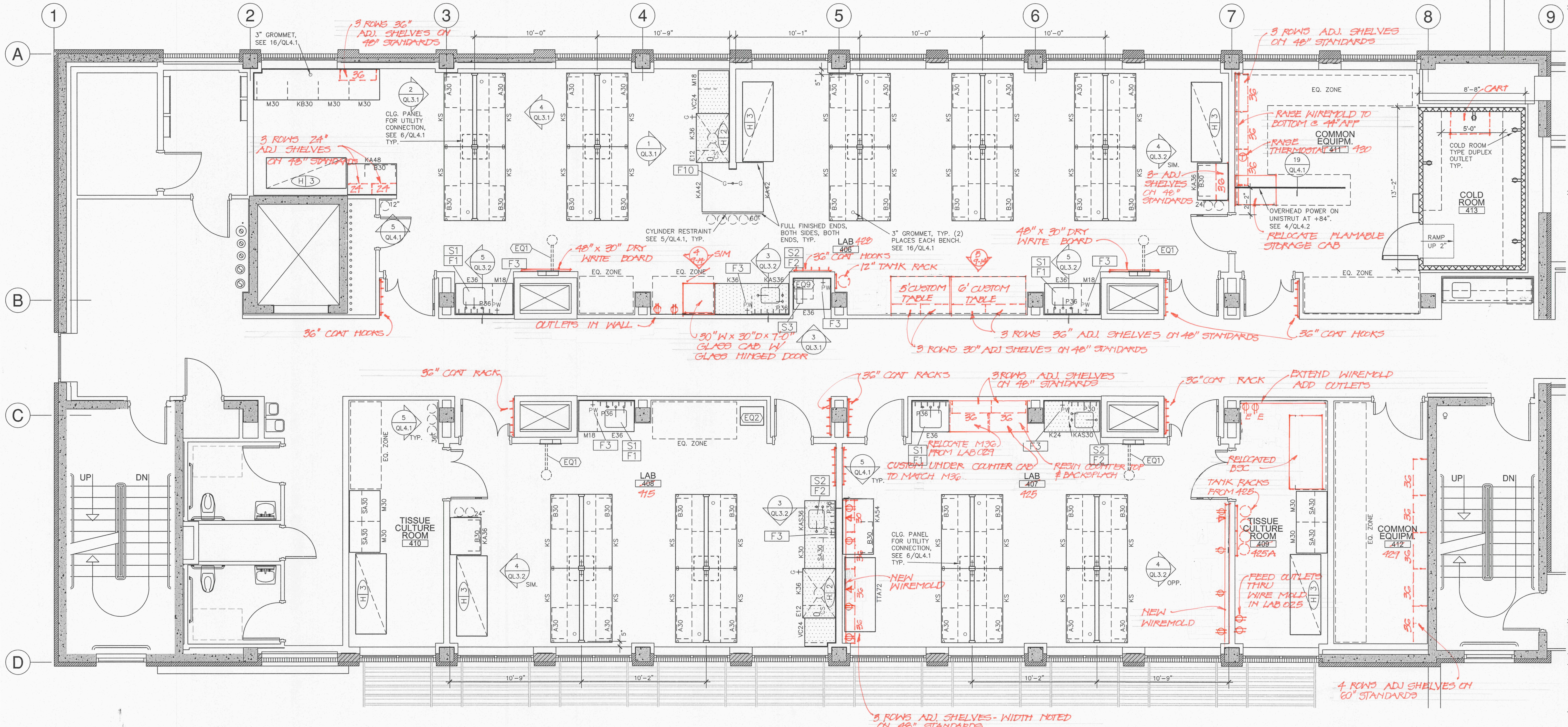
DRAWN BY:	GB	
CHECKED BY:	MO	
APPROVED BY:	NW	
REV	DESCRIPTION	DATE
NH	SD/00	01.23.2010
NH	CD	12.01.2010
NH	FINAL	04.14.2011



M.S.U. PPA 10-0023
 ADG 10-020
 FOURTH FLOOR
 LABORATORY
 PLAN

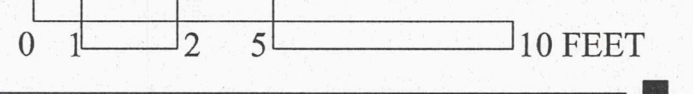
QL1.4

March 14, 2011



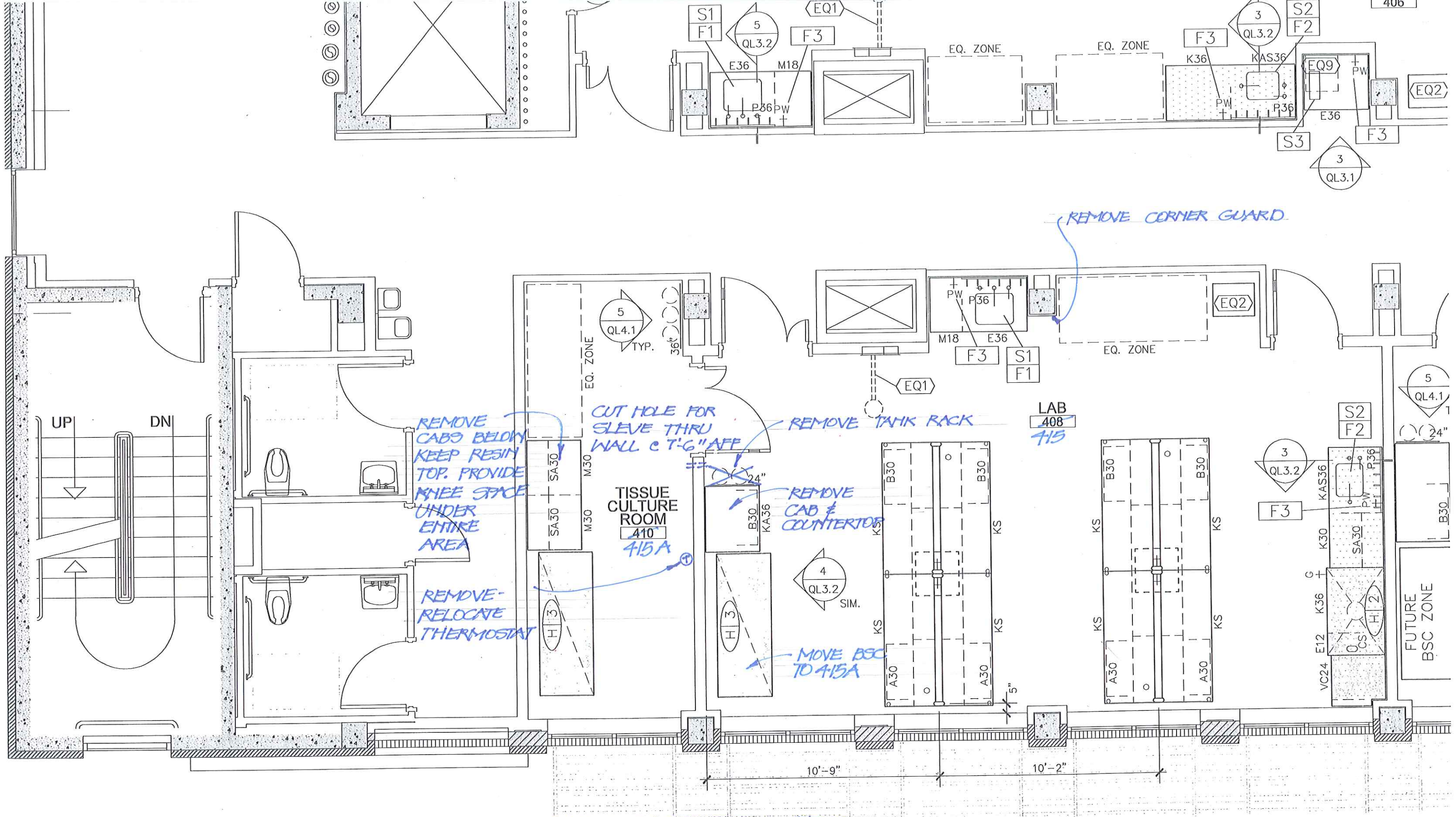
PLAN: FLOOR 4

SCALE: 1/4"=1'-0"



RFP75-4.R.0

NEW WORK
 MODIFICATIONS 7-14-2012



RFP75-4.D.1

CRU 10-8-2012

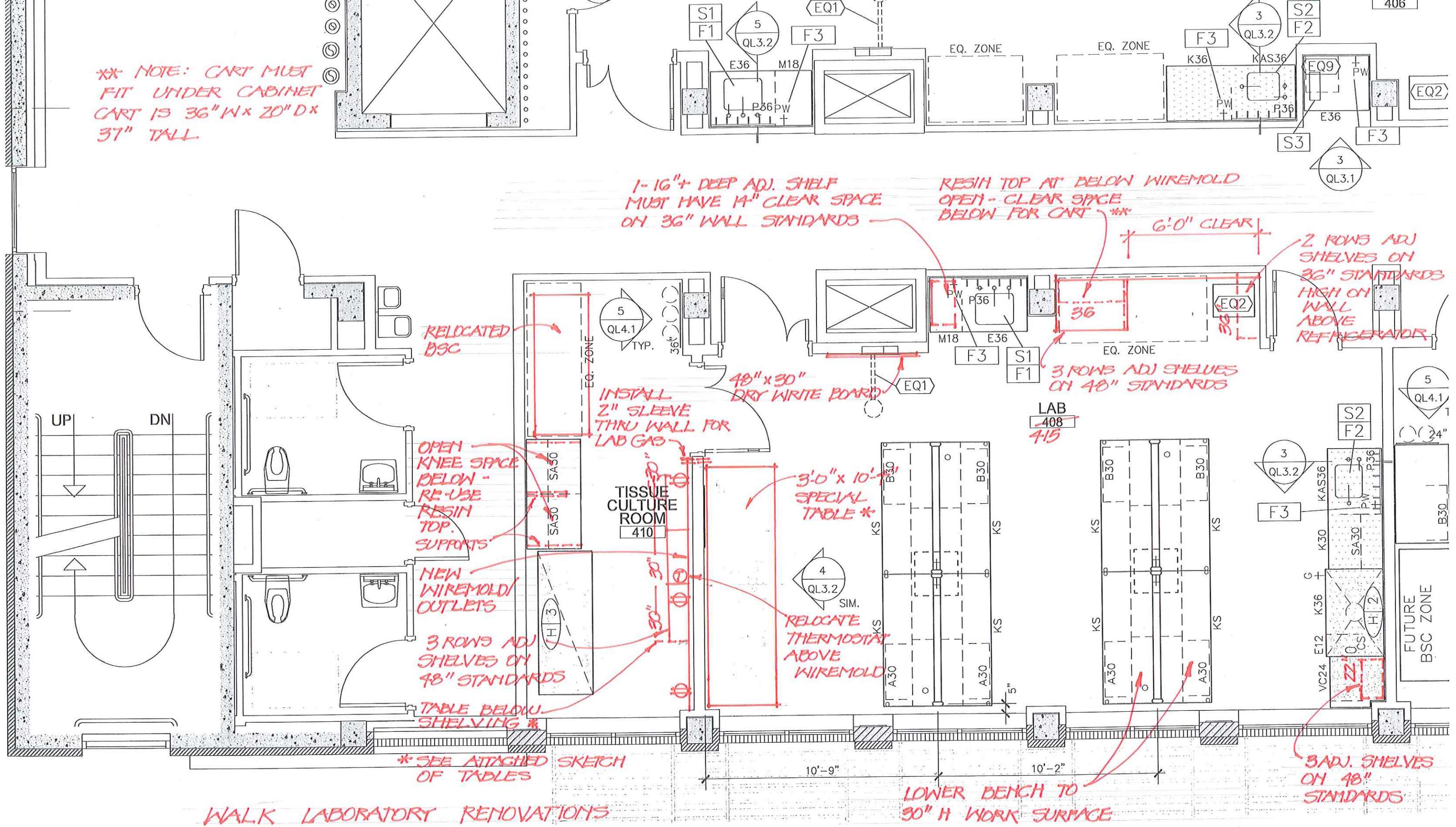


PLAN: FLOOR 4

SCALE: 1/4"=1'-0"

WALK LABORATORY DEMO.

**** NOTE: CART MUST FIT UNDER CABINET
CART IS 36" W x 20" D x 31" TALL**



CRV 10-8-2012

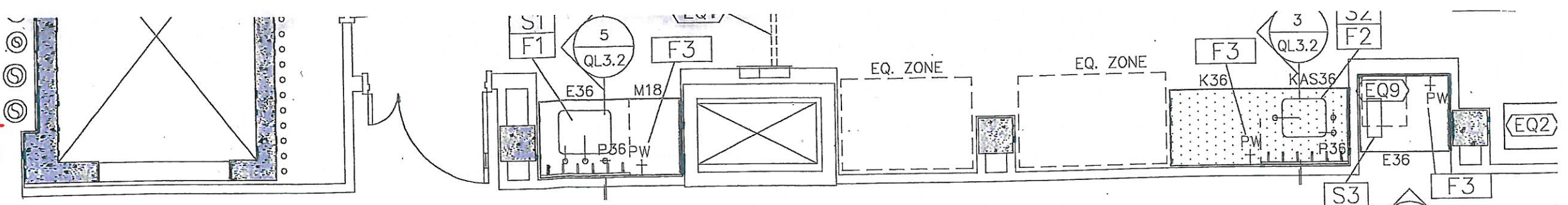
RFP75-4.R.1



PLAN: FLOOR 4

SCALE: 1/4" = 1'-0"

**** NOTE: CART MUST FIT UNDER CABINET
CART IS 36" W x 20" D x 37" TALL**



**POWER AT PANEL LAA
CIRCUITS LAA-8, 10, 12**

**1- 16" + DEEP ADJ. SHELF
MUST HAVE 14" CLEAR SPACE
ON 36" WALL STANDARDS**

**RESIN TOP AT BELOW WIREMOLD
OPEN - CLEAR SPACE
BELOW FOR CART**

6'-0" CLEAR

**2 ROWS ADJ SHELVES ON
36" STANDARDS
HIGH ON WALL
ABOVE REFRIGERATOR**

**3 ROWS ADJ SHELVES
ON 48" STANDARDS**

**RELOCATED
BSC**

**48" x 30"
DRY WRITE BOARD**

**CHANGE TO
24" SHELVING**

**OPEN
KNEE SPACE
BELOW -
RE-USE
RESIN
TOP**

**TISSUE
CULTURE
ROOM
410**

**3'-0" x 10'-0"
SPECIAL
TABLE *
WIREMOLD
10'-0" LONG**

**LAB
408
415**

**NEW
WIREMOLD
OUTLETS**

**3 ROWS ADJ
SHELVES ON
48" STANDARDS**

**TABLE BELOW
SHELVING ***

*** SEE ATTACHED SKETCH
OF TABLES**

**WIREMOLD
DROP**

**3 ADJ SHELVES
ON 48"
STANDARDS**

**LOWER BENCH TO
30" H WORK SURFACE**

WALK LABORATORY RENOVATIONS

**FUTURE
BSC ZONE**

RFP-75-4.R.2

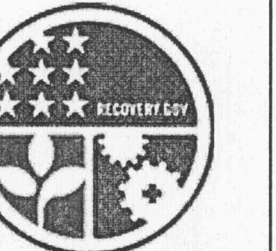
**CRV 10-8-2012
REV 10-12-2012**

COOLEY LABORATORY - MODIFICATIONS 10-12-2012
Cecilia R. Vaniman AIA, Project Manager



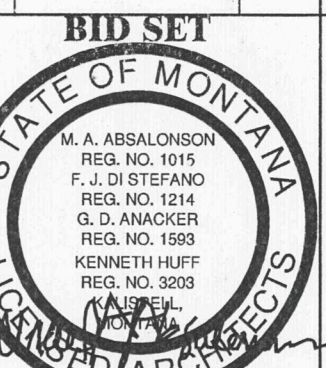
PLAN: FLOOR 4

SCALE: 1/4" = 1'-0"



DRAWN BY: GB
 CHECKED BY: MO
 APPROVED BY: NW

REV	DESCRIPTION	DATE
NH	SD	07.22.2010
NH	CD	12.01.2010
NH	FINAL	03.14.2011

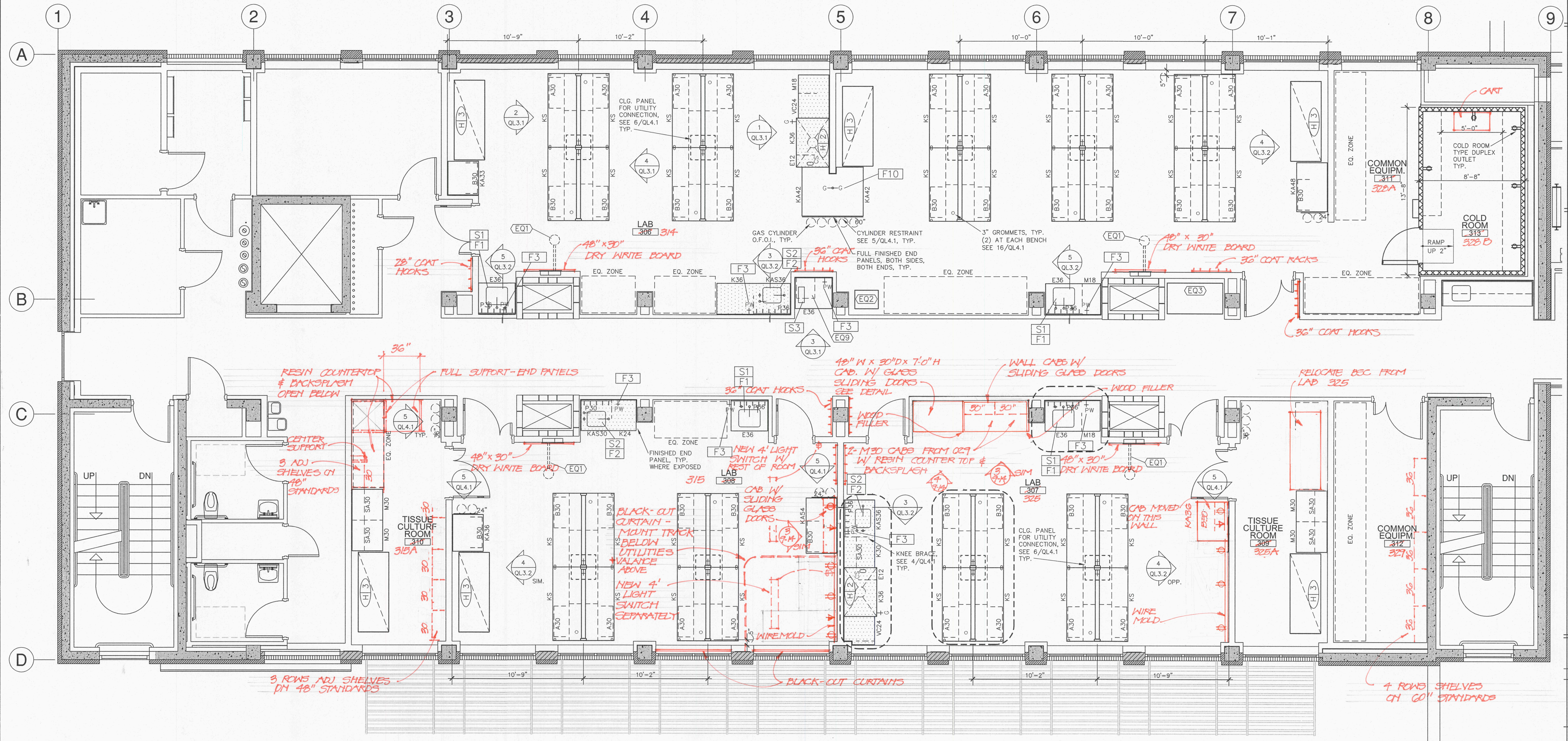


M.S.U. PPA 10-0023
 ADG 10-020

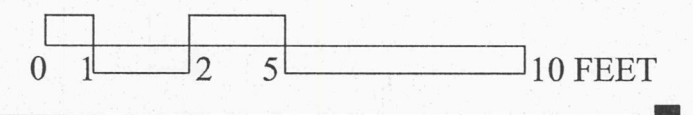
THIRD FLOOR
 LABORATORY
 PLAN

QL1.3

March 14, 2011

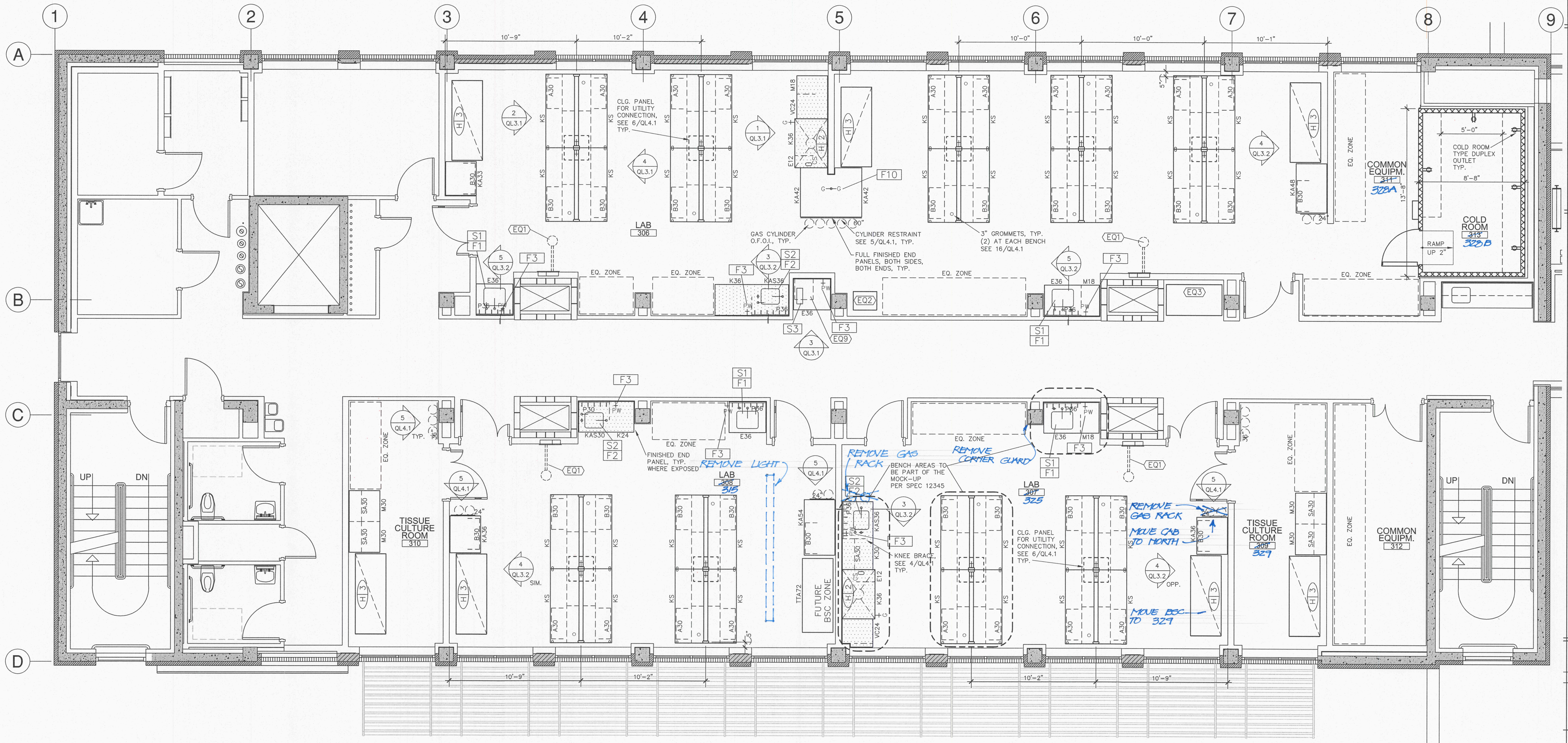


PLAN: FLOOR 3
 SCALE: 1/4" = 1'-0"

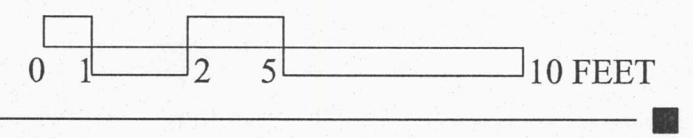


RFP75-3.R.0

NEW WORK
 MODIFICATIONS 9-14-2012



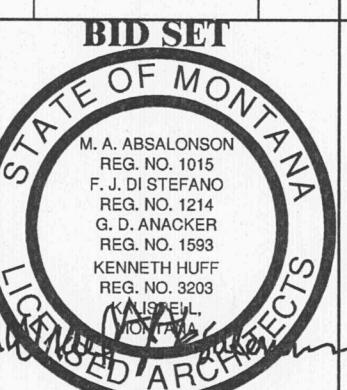
PLAN: FLOOR 3
SCALE: 1/4"=1'-0"



RFP75-3.D.0



DRAWN BY: GB		
CHECKED BY: MO		
APPROVED BY: NW		
REV	DESCRIPTION	DATE
NH	SD/DD	01.23.2010
NH	CD	12.08.2010
NH	FINAL	03.14.2011

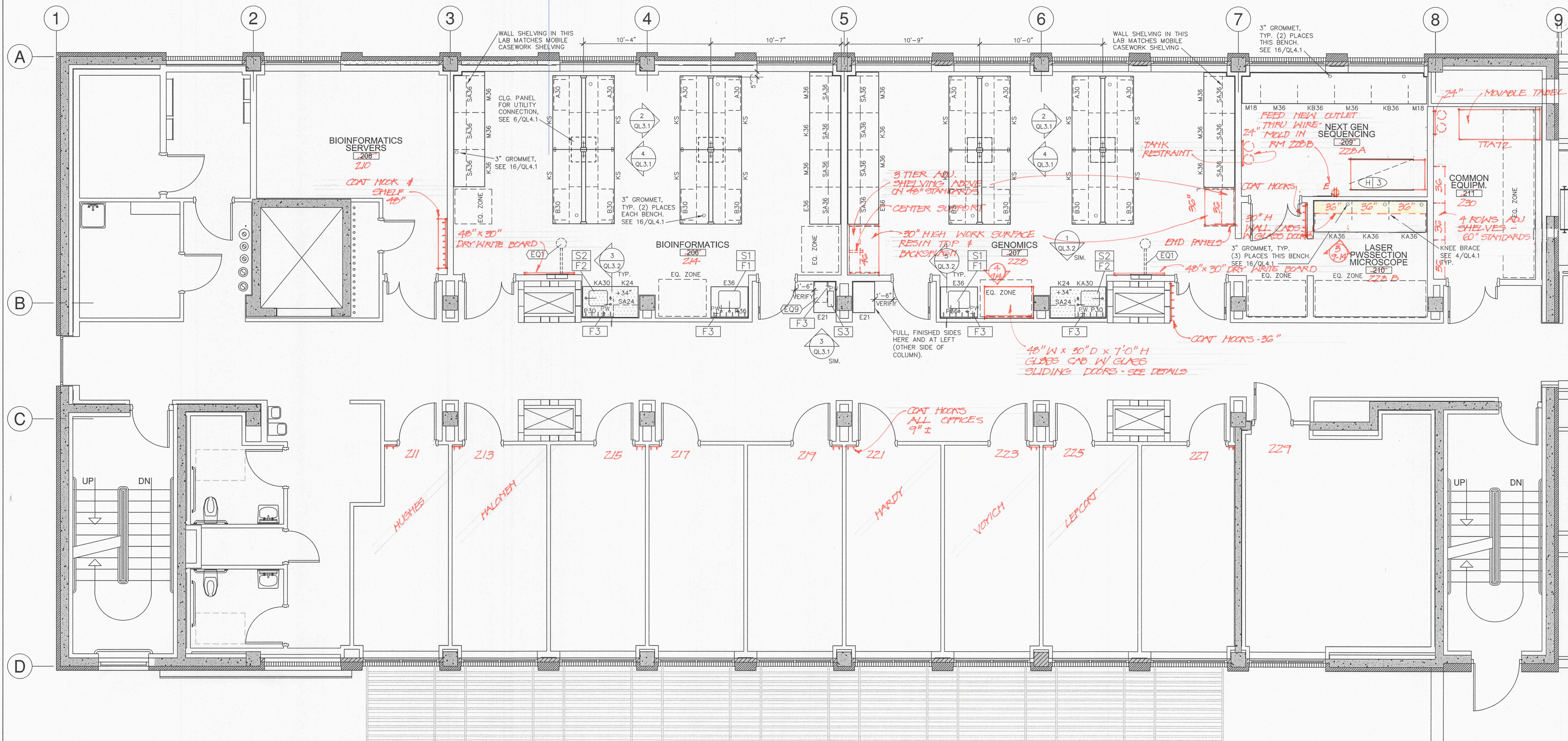


M.S.U. PPA 10-0023
ADG 10-020
THIRD FLOOR
LABORATORY
PLAN

QL1.3

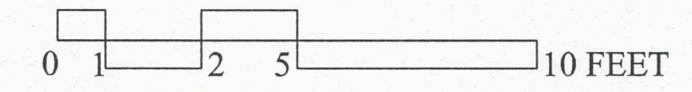
DEMO
MODIFICATIONS 9-14-2012

March 14, 2011



PLAN: FLOOR 2

SCALE: 1/4" = 1'-0"

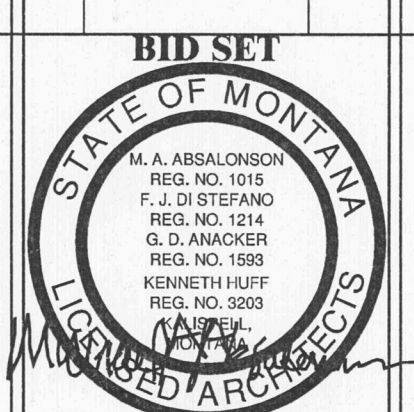


RFP75-2.R.0



DRAWN BY: GB
 CHECKED BY: MO
 APPROVED BY: NW

REV	DESCRIPTION	DATE
NH	SD/00	07.23.2010
NH	CD	12.01.2010
NH	FINAL	04.14.2011



M.S.U. PPA 10-0023
 ADG 10-020
 SECOND FLOOR
 LABORATORY
 PLAN

QL1.2

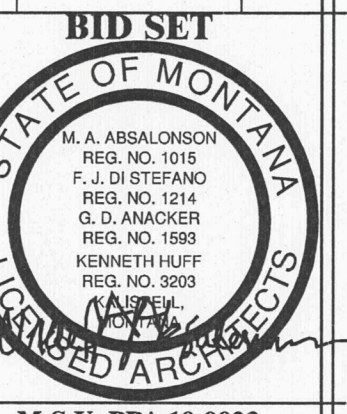
March 14, 2011

NEW WORK
 MODIFICATIONS 9-14-2012



DRAWN BY: GB
 CHECKED BY: MO
 APPROVED BY: NW

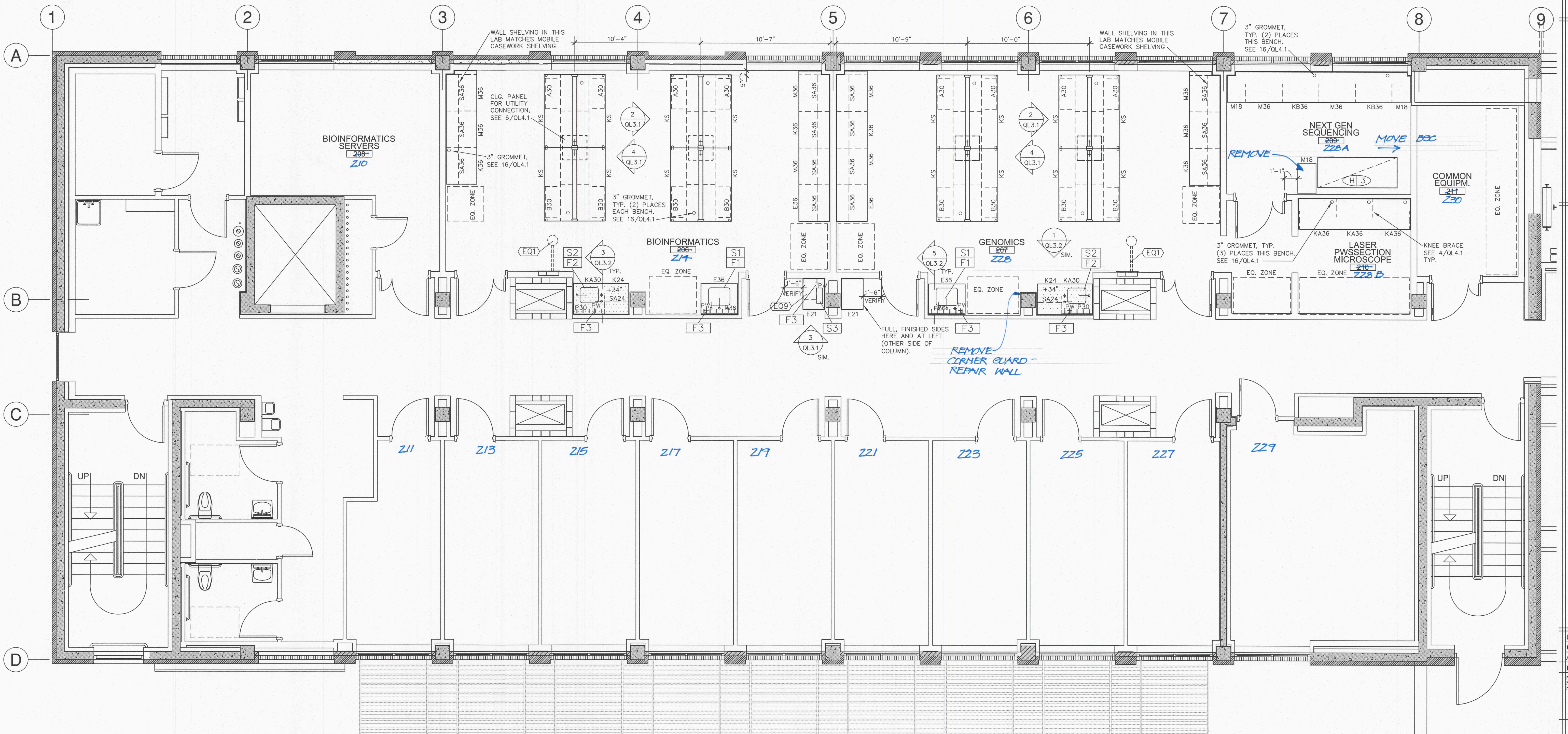
REV	DESCRIPTION	DATE
NH	SDDD	07.23.2010
NH	CD	12.01.2010
NH	FINAL	08.14.2011



M.S.U. PPA 10-0023
 ADG 10-020
 SECOND FLOOR
 LABORATORY
 PLAN

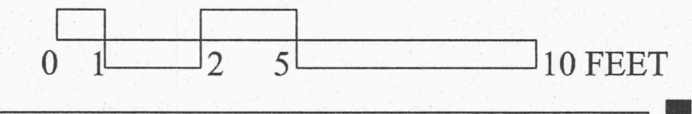
QL1.2

March 14, 2011



PLAN: FLOOR 2

SCALE: 1/4" = 1'-0"



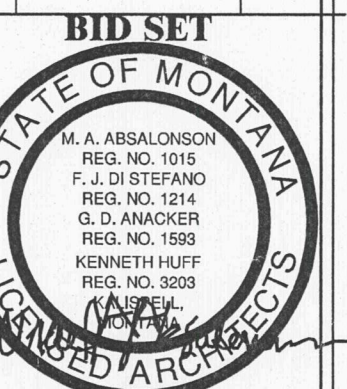
RFP75-2-D.0

DEMO
 MODIFICATIONS 9-14-2012



DRAWN BY: GB
 CHECKED BY: MO
 APPROVED BY: NW

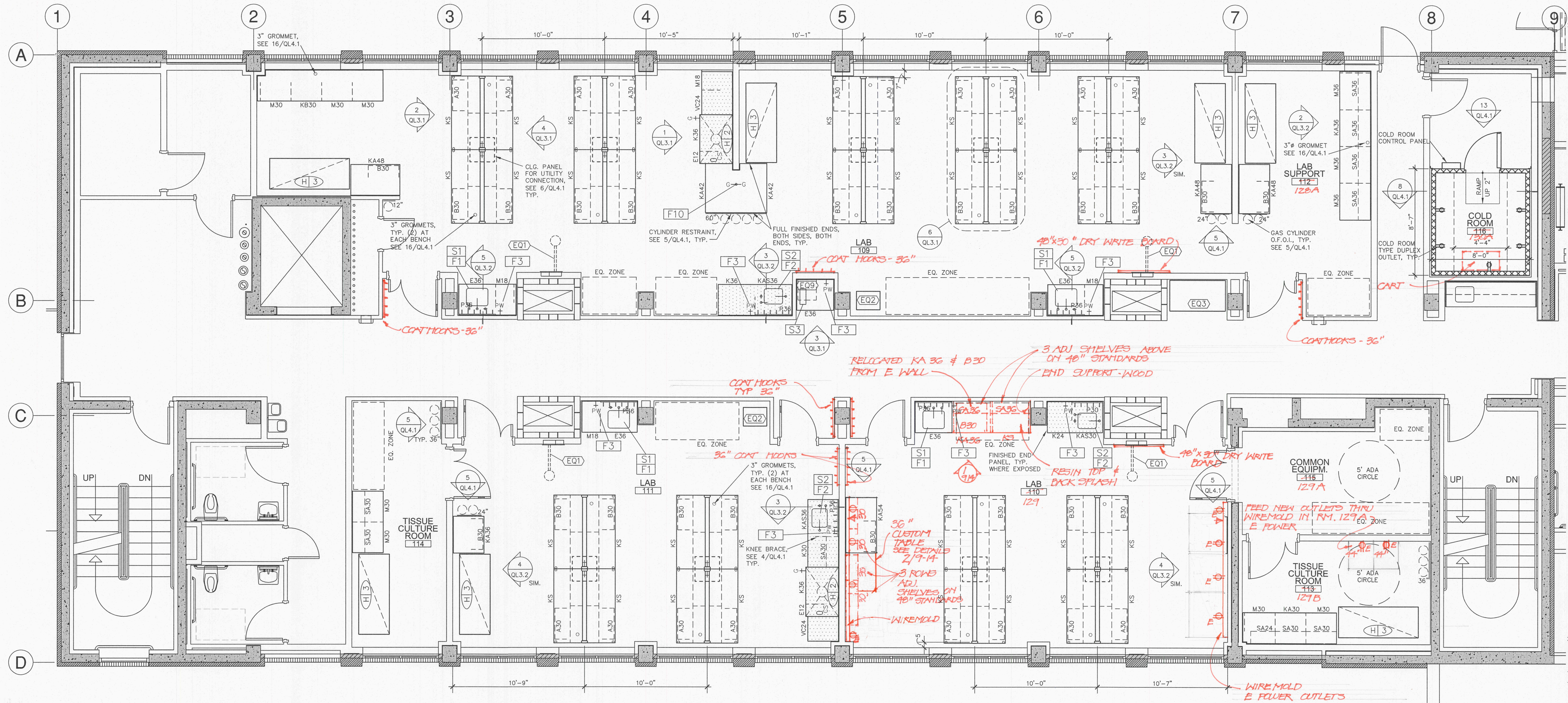
REV	DESCRIPTION	DATE
NH	SD00	07.23.2010
NH	CD	12.01.2010
NH	FINAL	03.14.2011



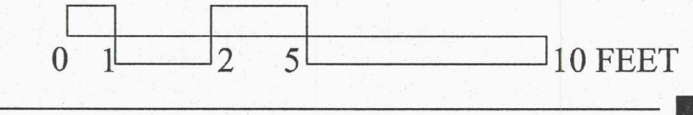
M.S.U. PPA 10-0023
 ADG 10-020
 FIRST FLOOR
 LABORATORY
 PLAN

QL1.1

March 14, 2011



PLAN: FLOOR 1
 SCALE: 1/4" = 1'-0"



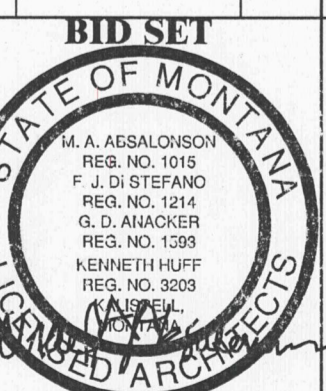
RFP75-1.R.0

NEW WORK
 MODIFICATIONS 7-14-2012



DRAWN BY: GB
 CHECKED BY: MO
 APPROVED BY: NW

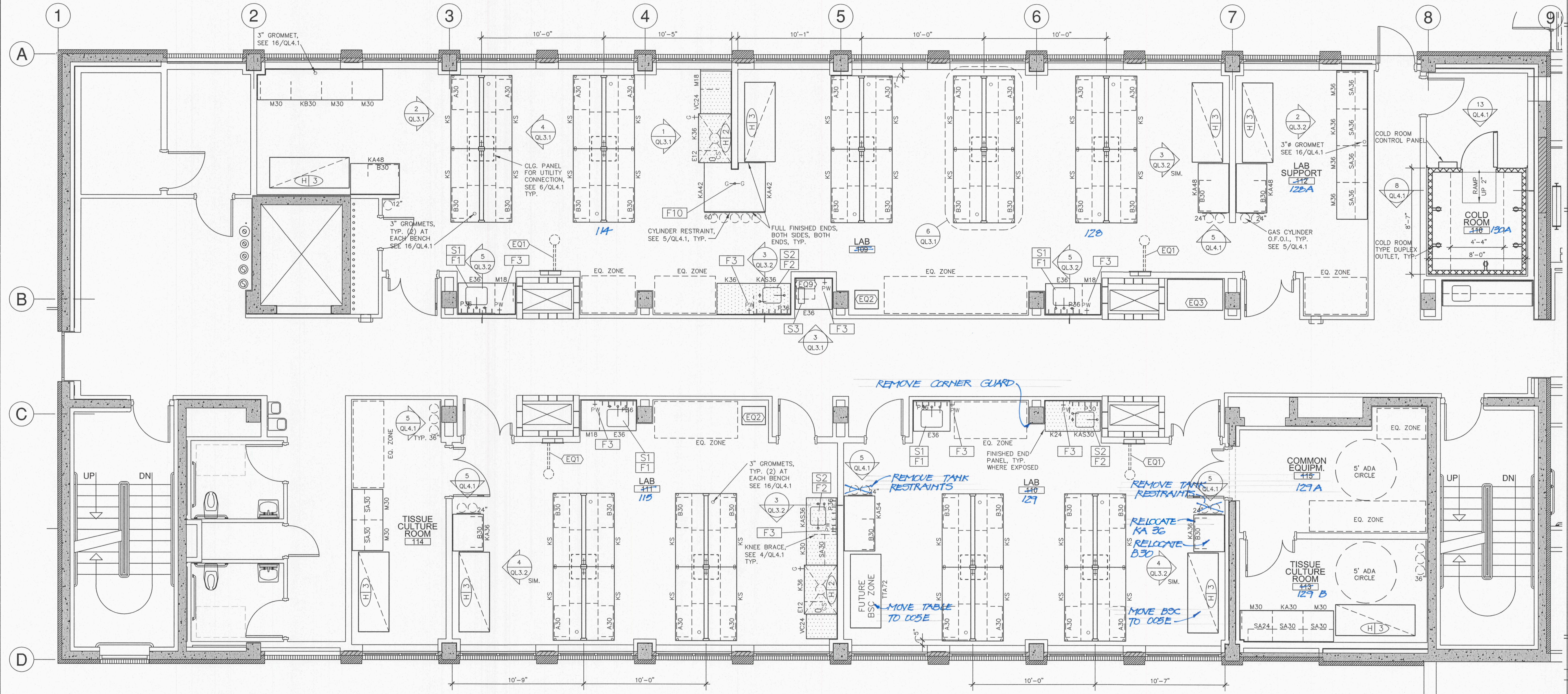
REV	DESCRIPTION	DATE
NH	SD/DD	07.22.2010
NH	CD	12.01.2010
NH	FINAL	04.14.2011



M.S.U. PPA 10-0023
 ADG 10-020
 FIRST FLOOR
 LABORATORY
 PLAN

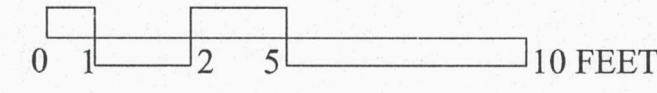
QL1.1

March 14, 2011



PLAN: FLOOR 1

SCALE: 1/4"=1'-0"

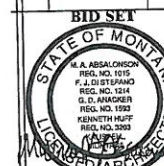


RFP75-1.D.0

DEMO
 MODIFICATIONS 7-14-2012



DRAWN BY: GB
 CHECKED BY: MO
 APPROVED BY: NY

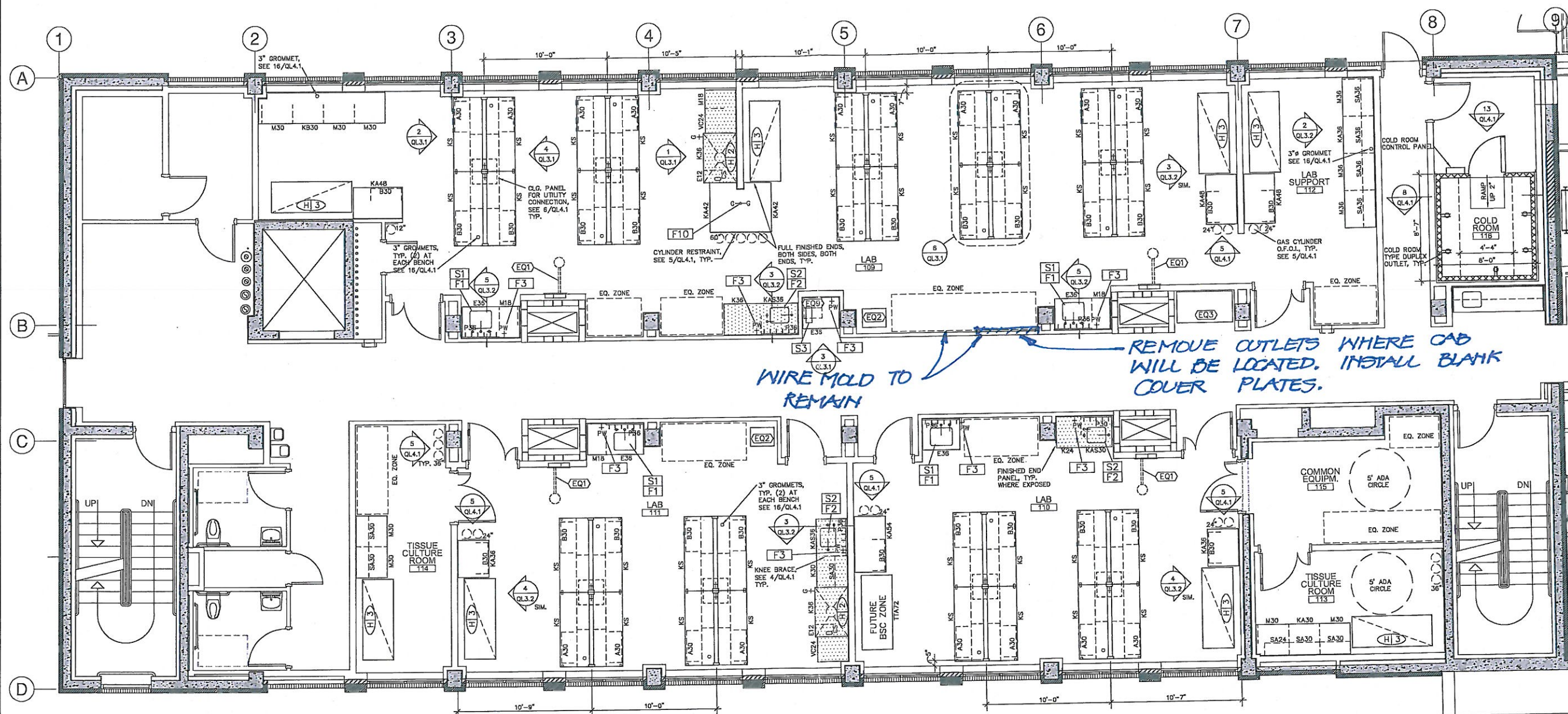


M.S.U. PPA 10-0023
 ADG 10-020

FIRST FLOOR
 LABORATORY
 PLAN

QL1.1

March 14, 2011



REMOVE OUTLETS WHERE CAB
 WILL BE LOCATED. INSTALL BLANK
 COVER PLATES.

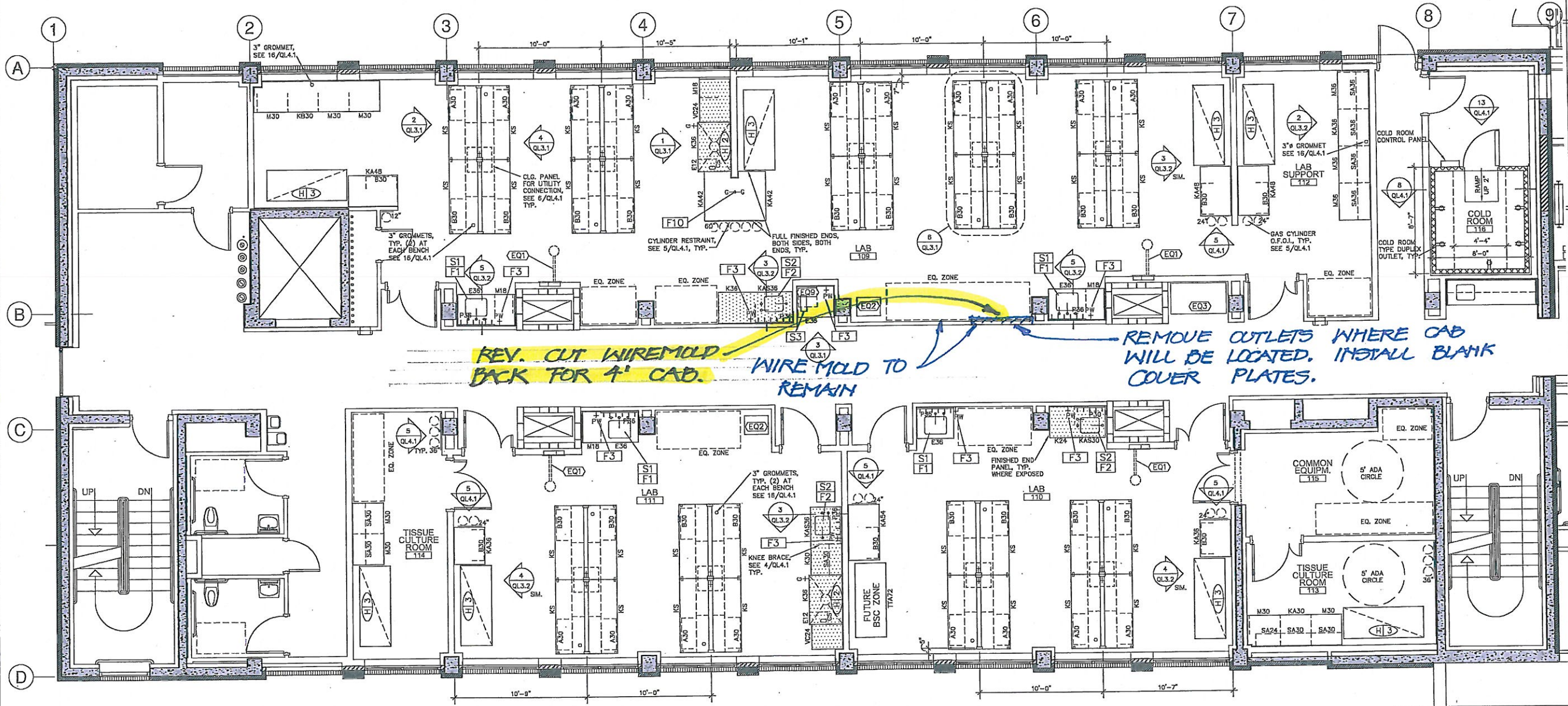
WIRES MOLD TO
 REMAIN



PLAN: FLOOR 1
 SCALE: 1/4"=1'-0"
UTILAS' LAB



RFP75-1.D.1



REV. CUT WIREMOLD BACK FOR 4' CAB. WIRE MOLD TO REMAIN REMOVE OUTLETS WHERE CAB WILL BE LOCATED. INSTALL BLANK COVER PLATES.

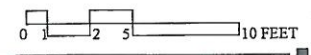


PLAN: FLOOR 1

SCALE: 1/4" = 1'-0"

UTILAS' LAB

REV 10-12



COOLEY LABORATORY - MODIFICATIONS 10-12-2012
 Cecilia R. Vaniman AIA, Project Manager

RFP75-1.D.2

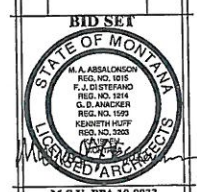
MONTANA STATE UNIVERSITY
 FACILITIES PLANNING DESIGN & CONSTRUCTION
 BOZEMAN, MONTANA
 PHONE: 406.994.4131 FAX: 406.994.6572

Architects
 Design Group PC
 1 SUNSET PLAZA KALISPELL, MT 496.251.7125

Montana State University
 Cooley Lab Renovation
 Bozeman, Montana



DRAWN BY:	GB	
CHECKED BY:	MO	
APPROVED BY:	NV	
REV	DESCRIPTION	DATE
01	ISSUED	07.22.2010
02	CD	08.20.2010
03	FINAL	03.31.2011



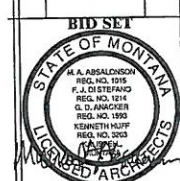
M.S.U. PPA 10-0013
 ADG 10-020
 FIRST FLOOR
 LABORATORY
 PLAN

QL1.1

March 14, 2011



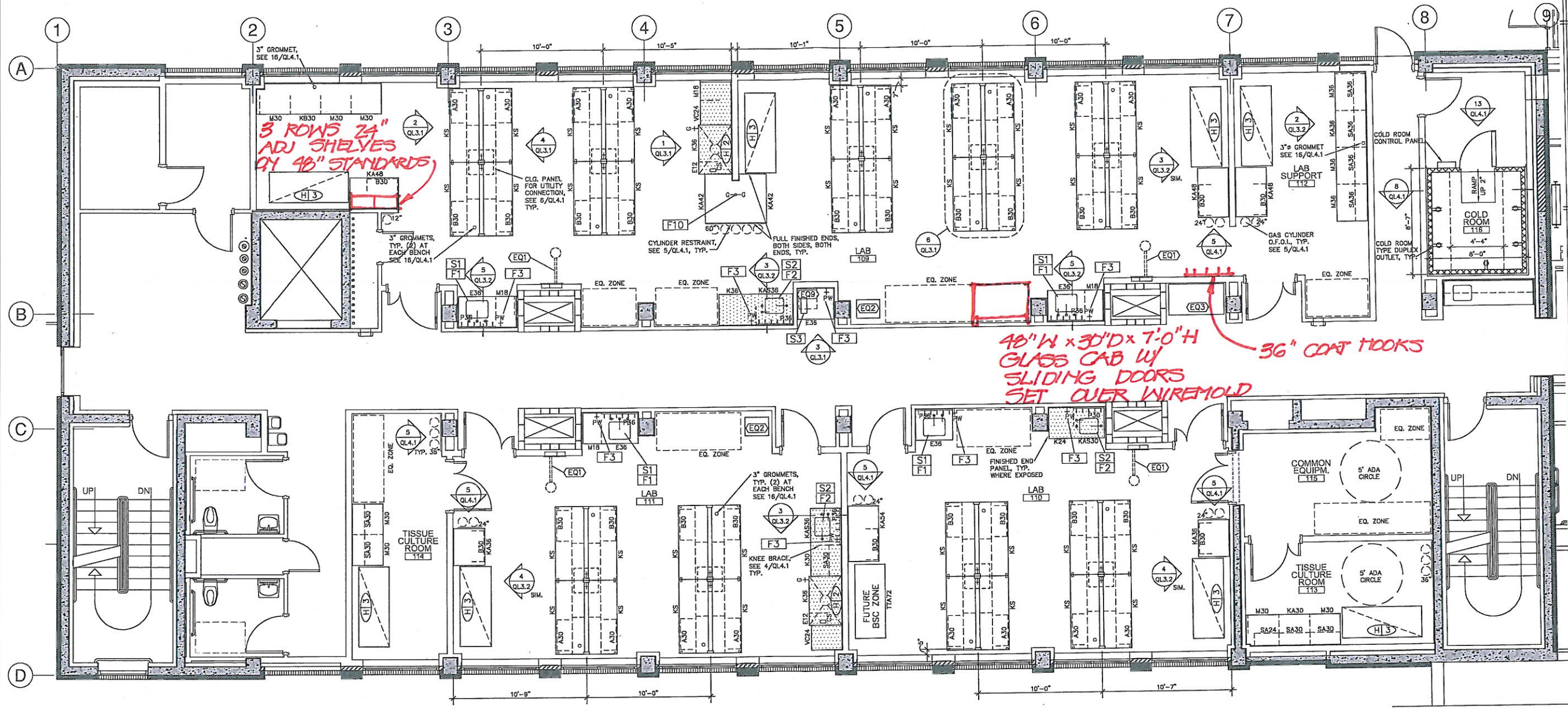
DRAWN BY:	GB	
CHECKED BY:	MG	
APPROVED BY:	NV	
REV	DESCRIPTION	DATE
01	ISSUE	01.22.2010
02	CD	12.02.2010
03	FINAL	03.14.2011



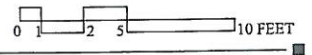
M.S.U. PPA 10-0023
 ADG 10-020
 FIRST FLOOR
 LABORATORY
 PLAN

QL1.1

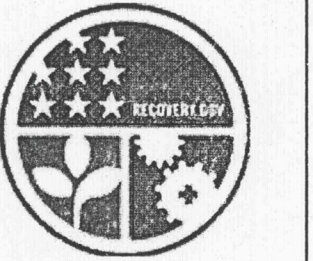
March 14, 2011



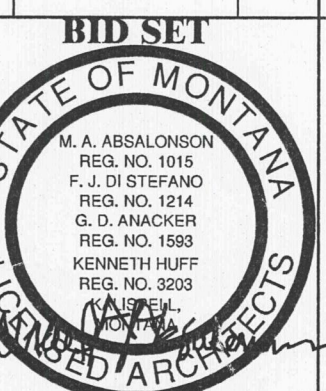
PLAN: FLOOR 1
 SCALE: 1/4"=1'-0"
JUTILA'S LAB



RFP75-1.R.1



DRAWN BY:	GB	
CHECKED BY:	MO	
APPROVED BY:	NW	
REV	DESCRIPTION	DATE
NH	SD/DD	01.23.2010
NH	CD	03.28.2010
NH	FINAL	03.24.2011

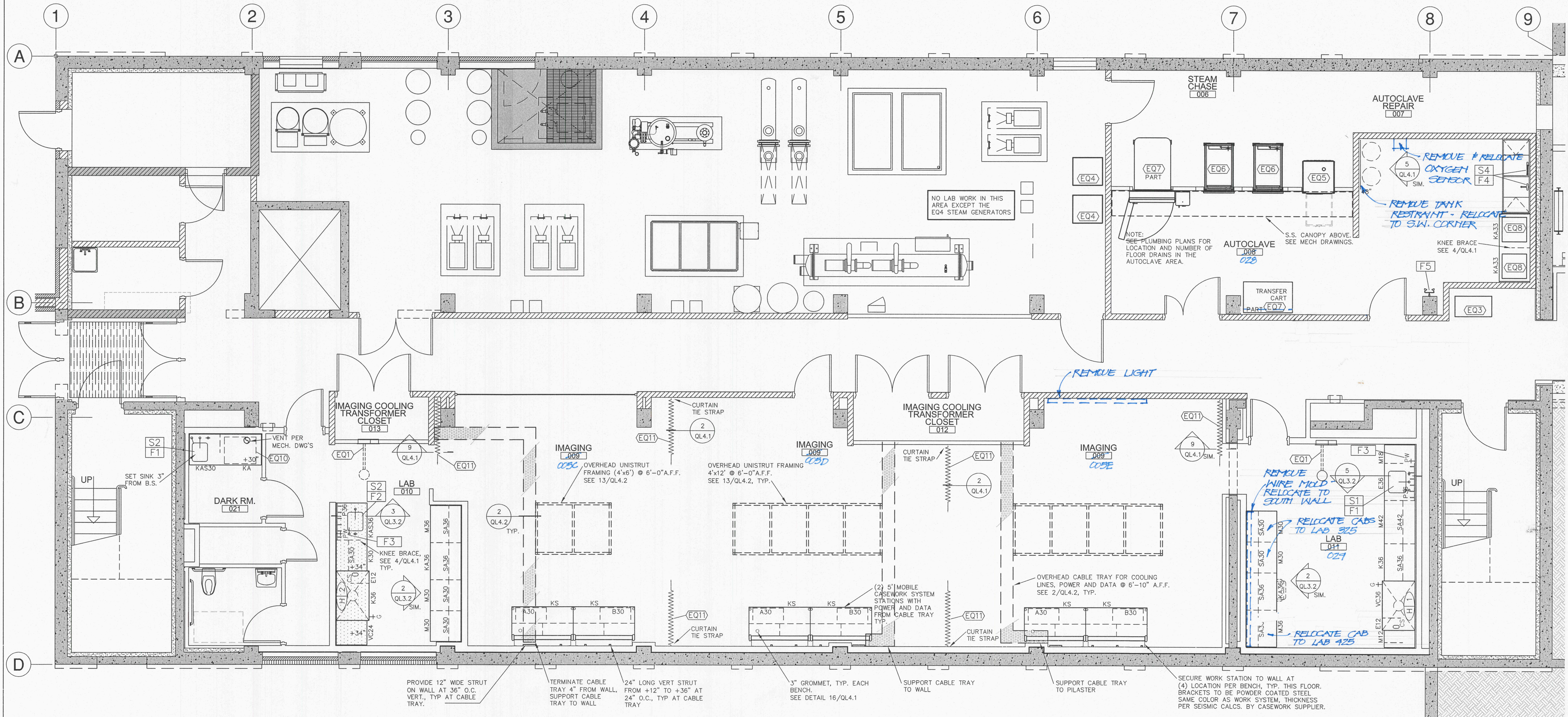


M.S.U. PPA 10-0023
 ADG 10-020

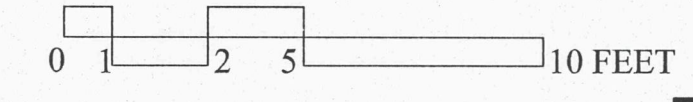
BASEMENT
 LABORATORY
 PLAN

QL1.0

March 14, 2011

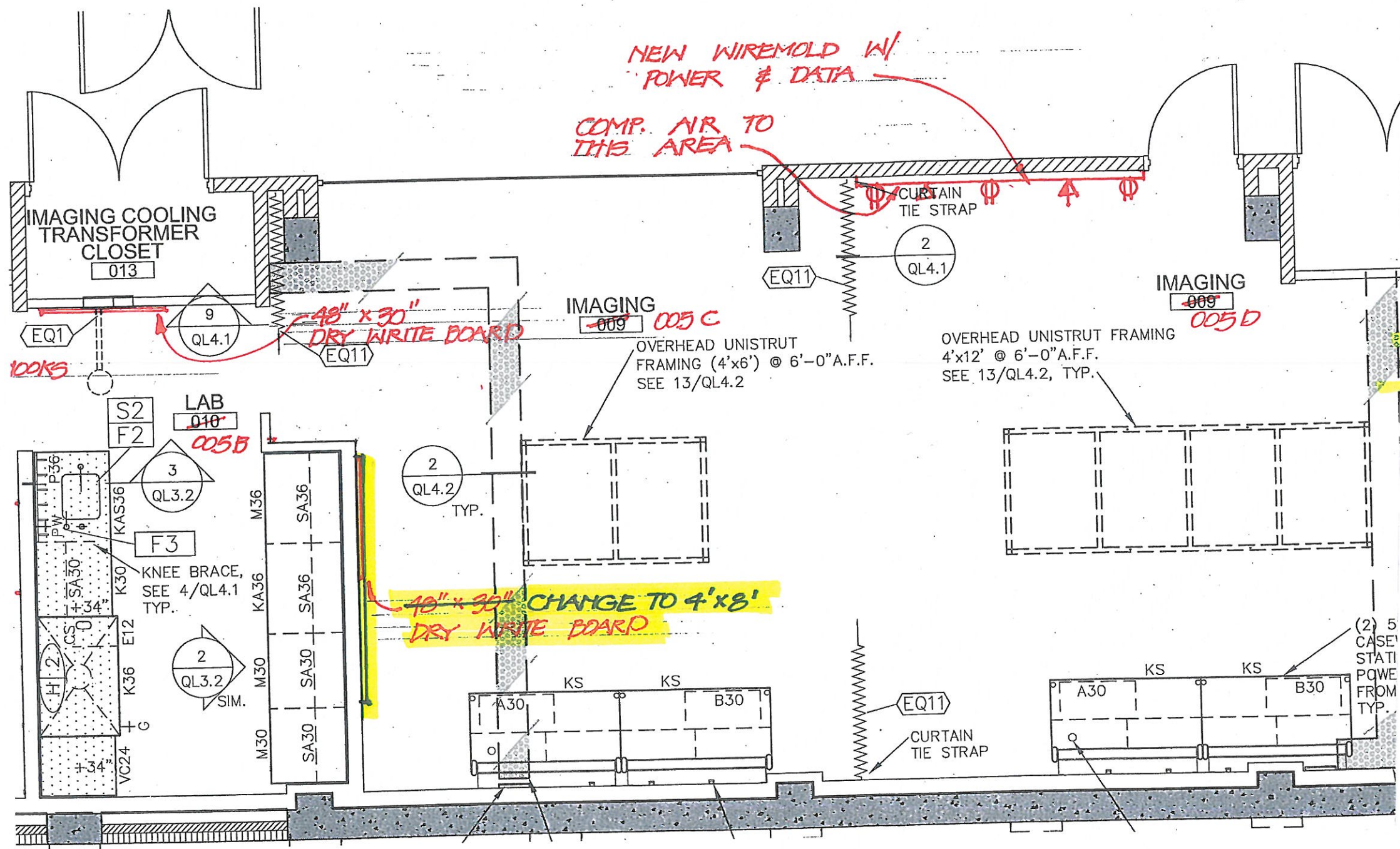


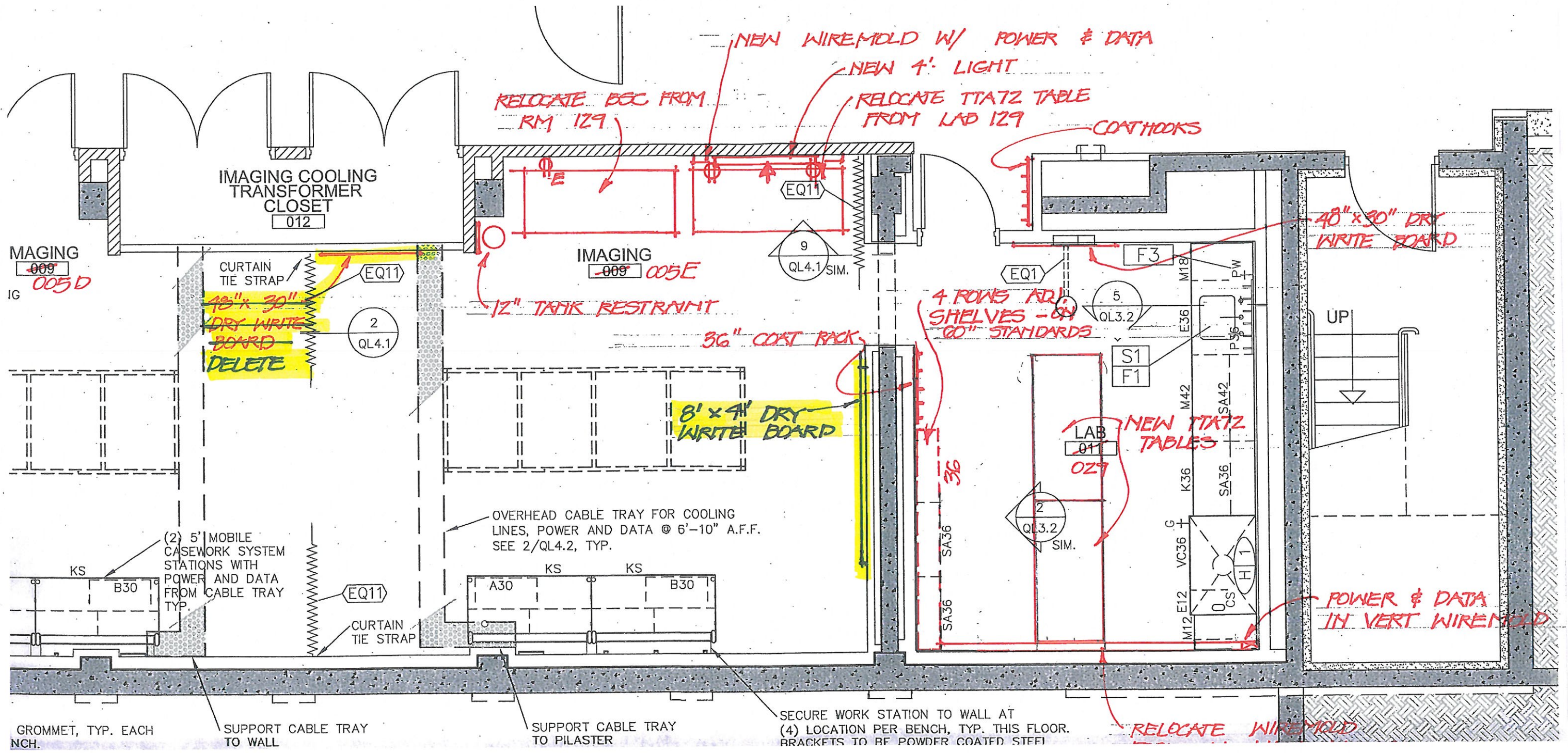
PLAN: BASEMENT
 SCALE: 1/4" = 1'-0"

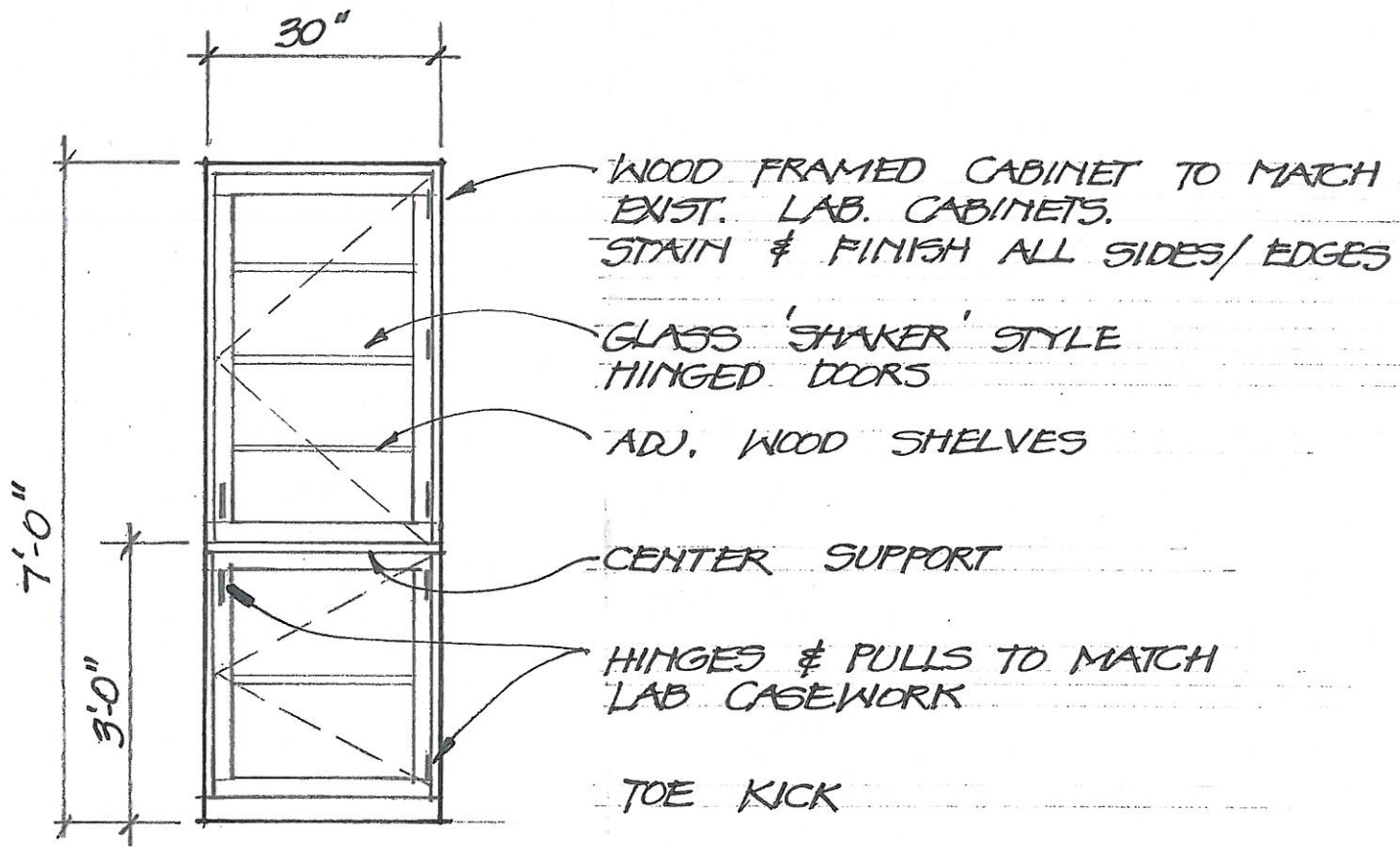
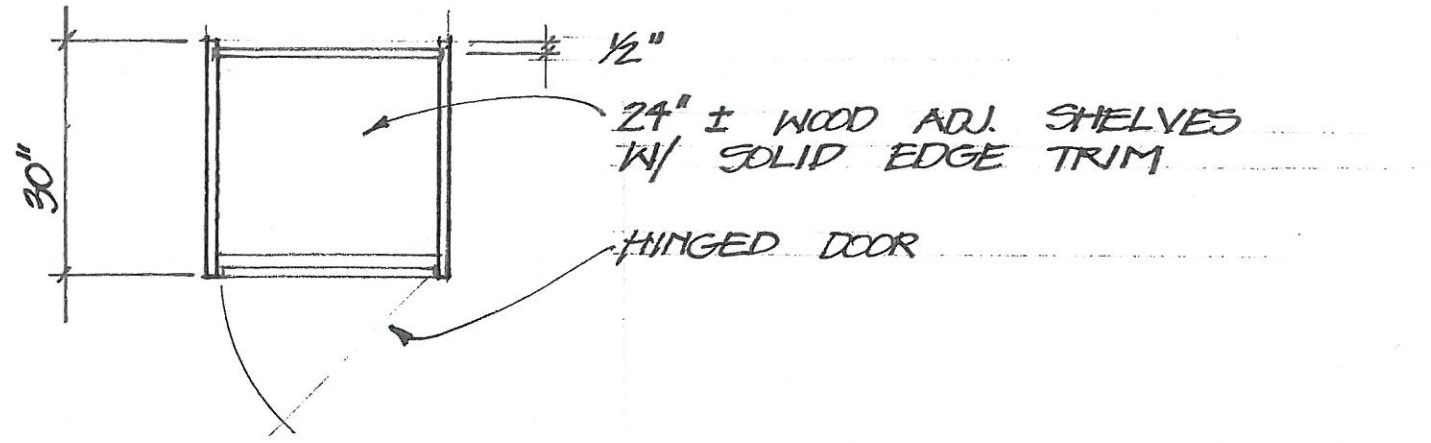


RFP75-B.D.0

DEMO
 MODIFICATIONS 9-14-2012





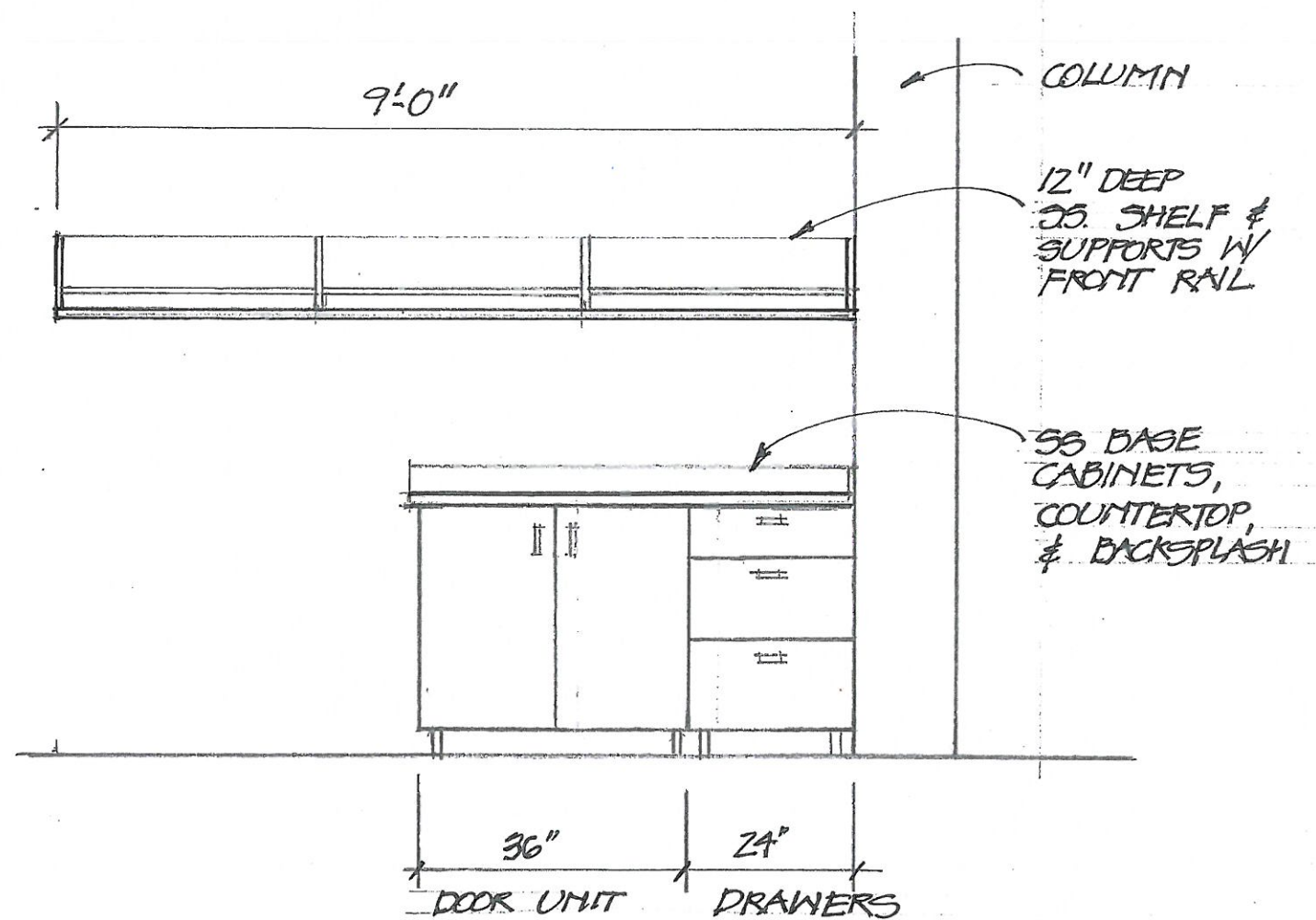
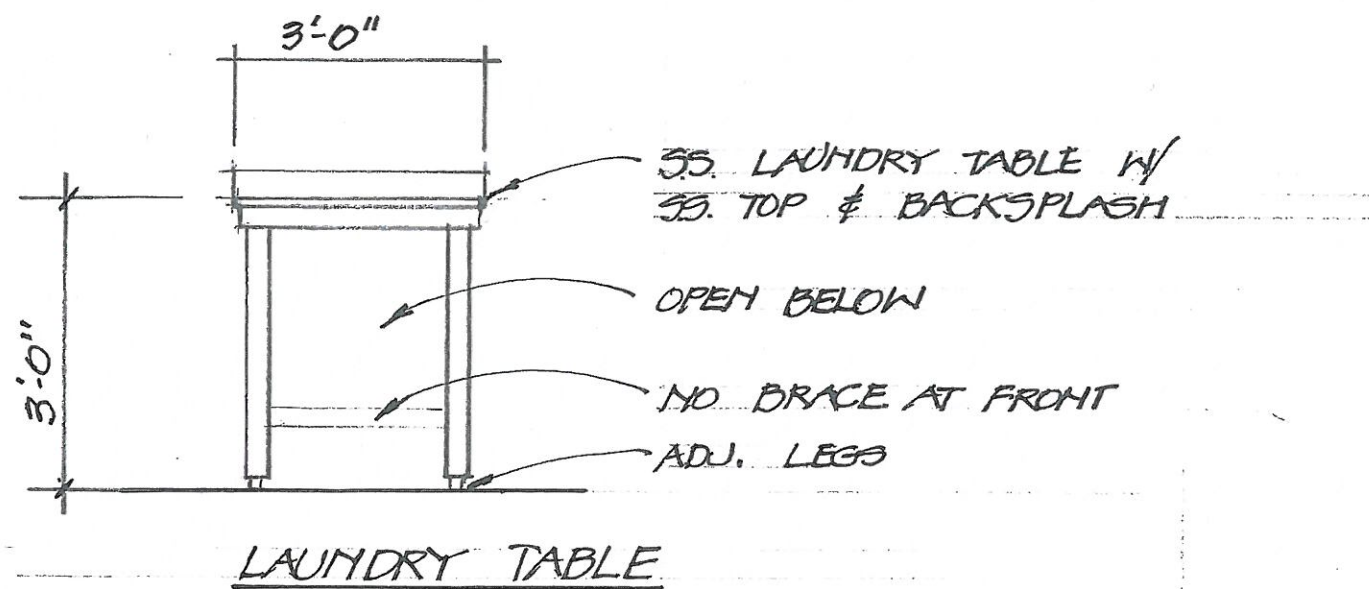


CUSTOM GLASS CABINET

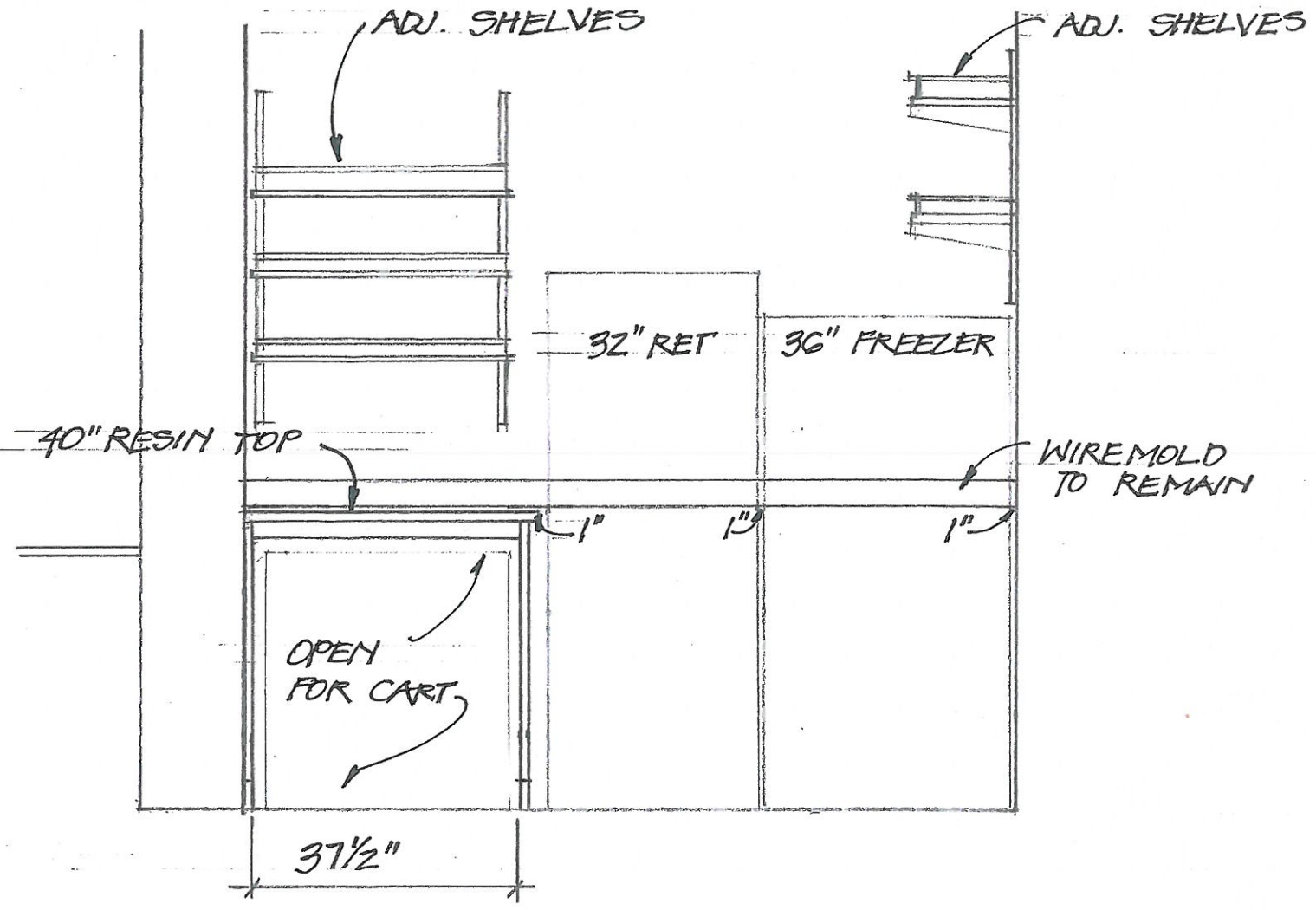
1 FOR 414

RFP75



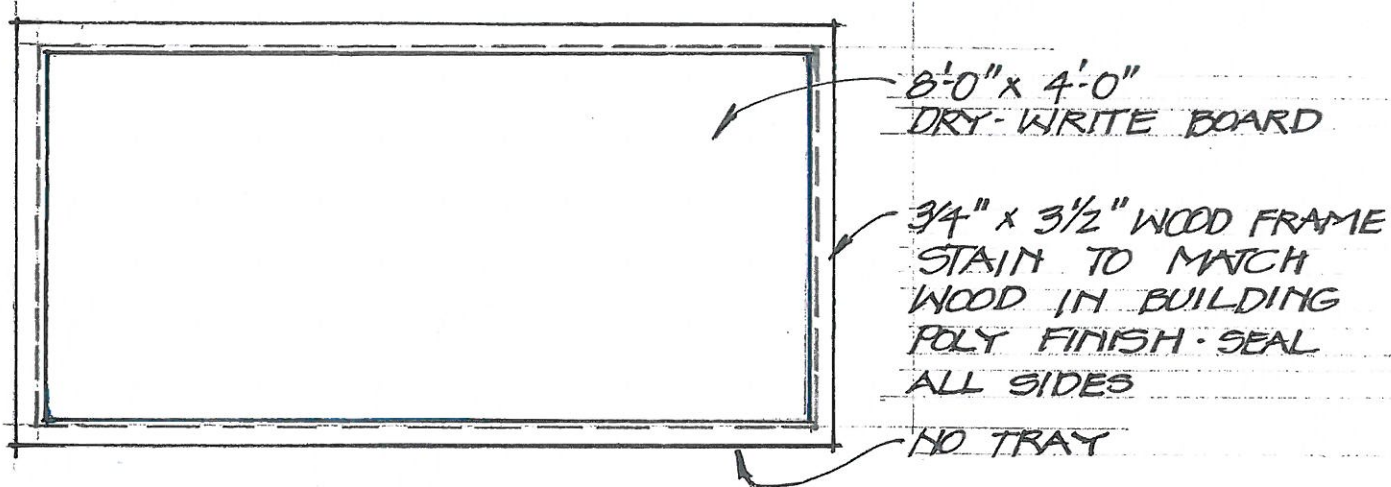


AUTOCLAVE ROOM- CABINETS

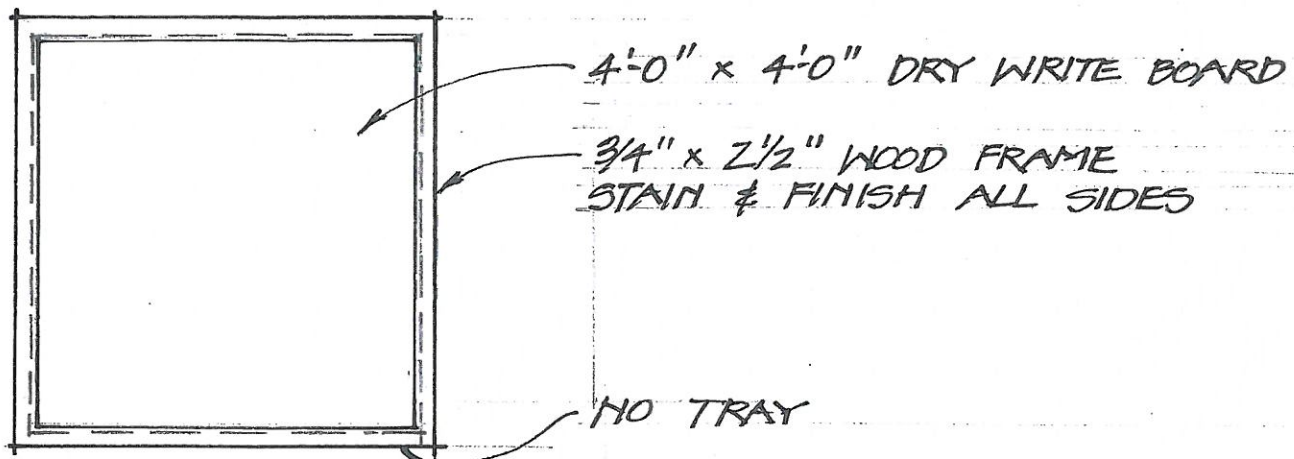


LAB 415 - NORTH WALL

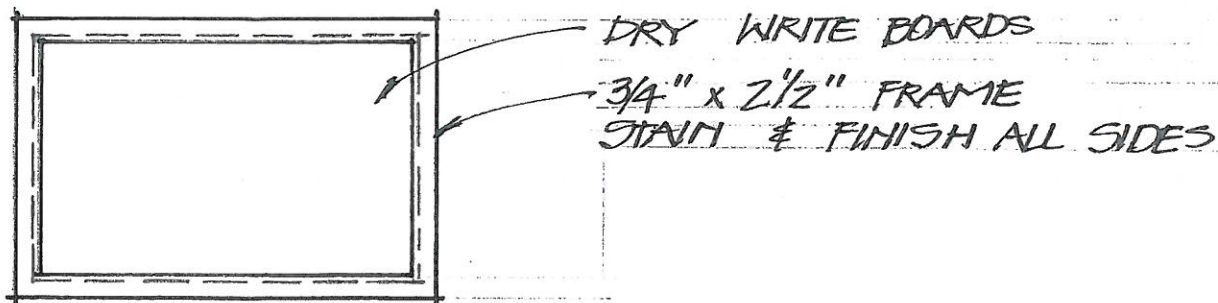
WALK



COLLISION AREA - 2 FRAMES
 LASER IMAGING - 2 D.W.B. / FRAMES



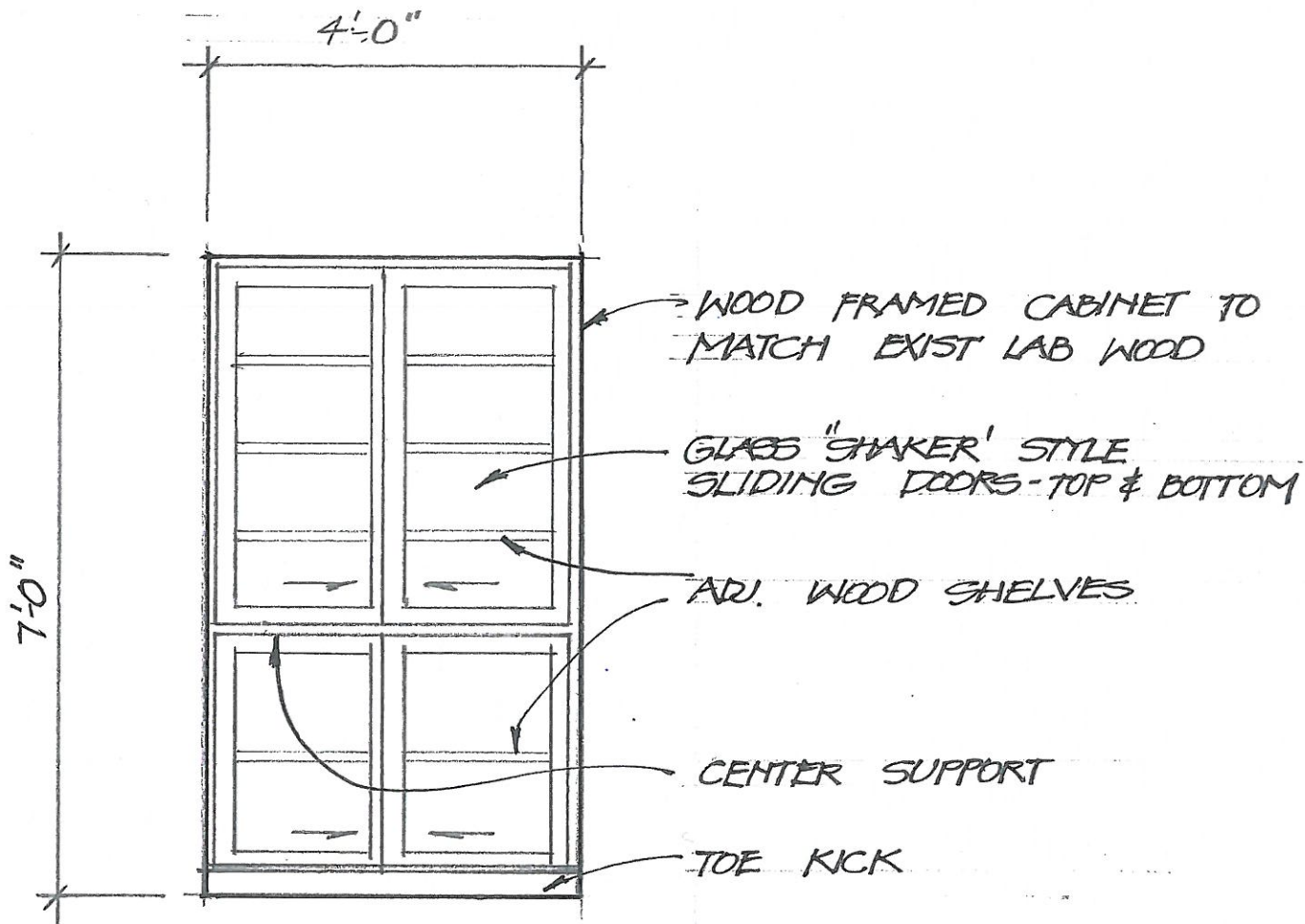
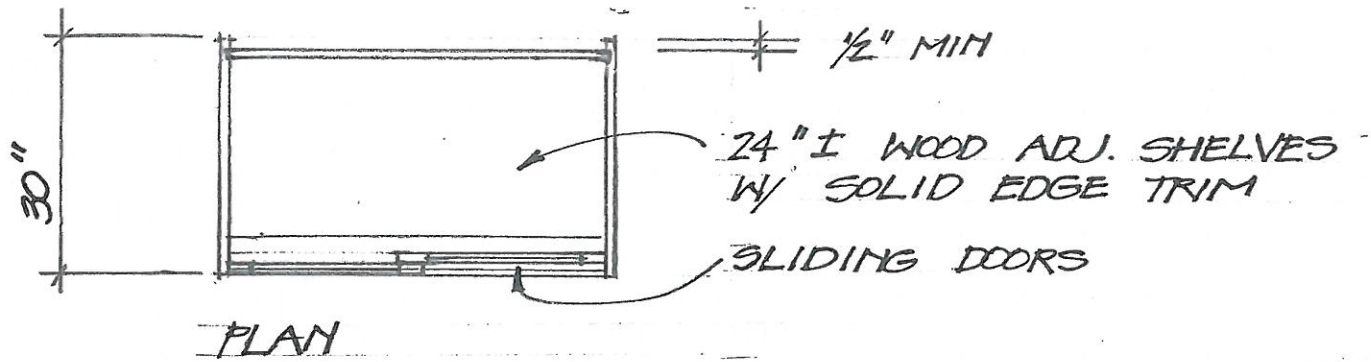
OFFICES - 10 D.W.B. / FRAMES - NOTE 9 IN P.I. OFFICES - 1 @ Z10
 AUTOCLAVE - 1 D.W.B. / FRAME



LABS - 15 @ 48" x 30" D.W.B.
 LAB 325-1 @ 40" x 30" D.W.B.

RFP75

D



CUSTOM GLASS CABINET

- 1 FOR LAB 128
- 1 FOR LAB 228
- 1 FOR LAB 325

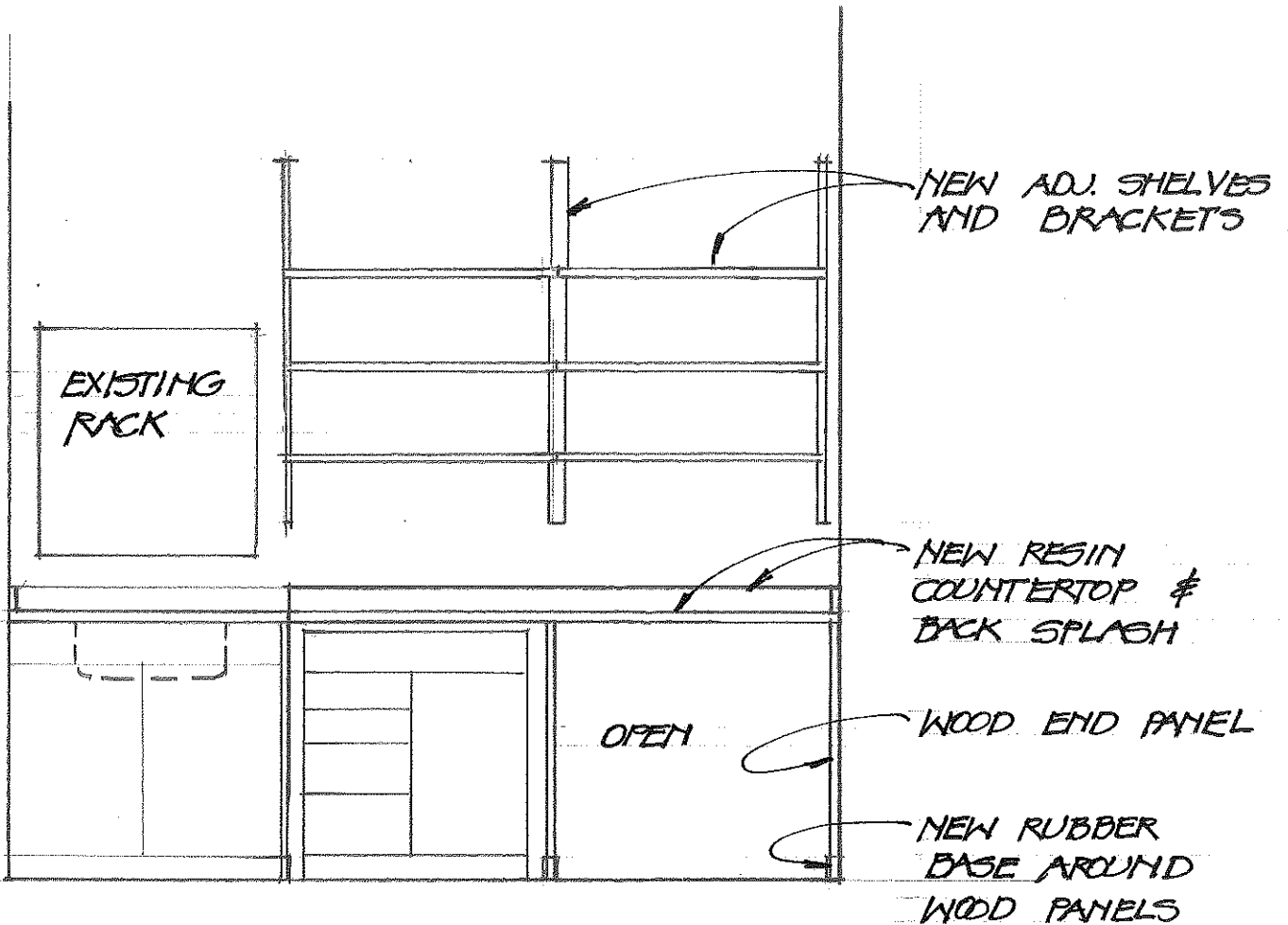
RFP75

COOLEY LABORATORY RENOVATION
MODIFICATIONS September 14, 2012

Cecilia R. Vaniman AIA
Project Manager

REV. 10-10-12

4
9-14



EXISTING
SINK BASE

RELOCATED
KA 36 &
B 30

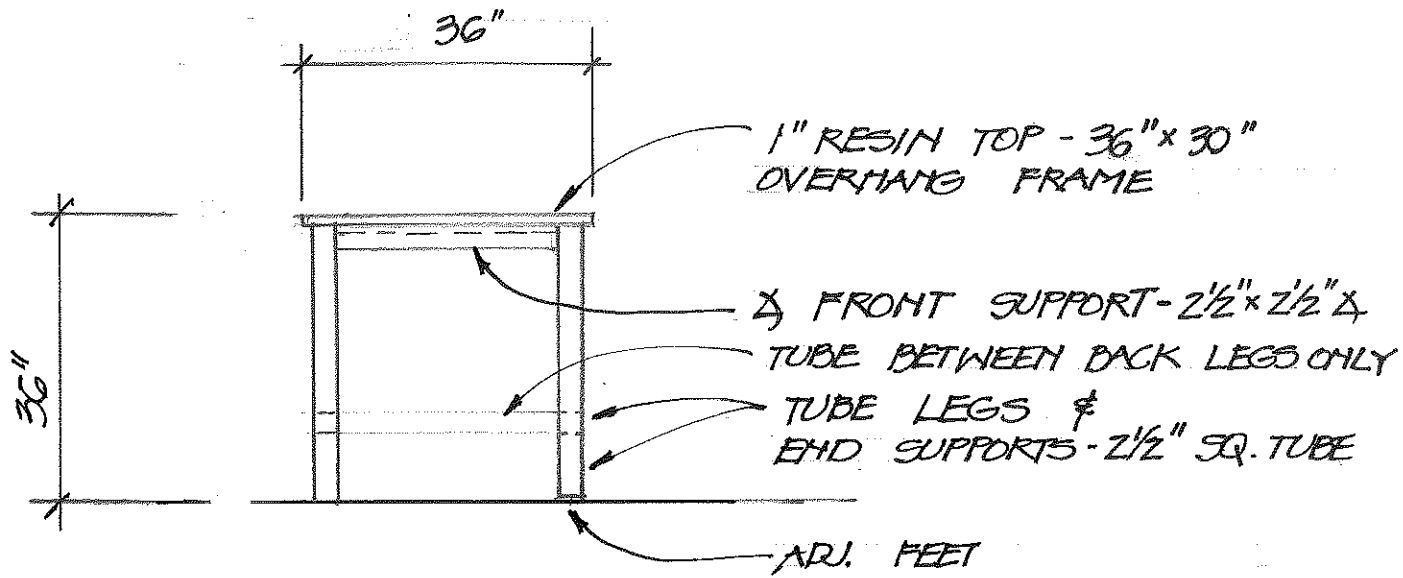
NORTH ELEVATION LAB 129

1/2" = 1'-0"

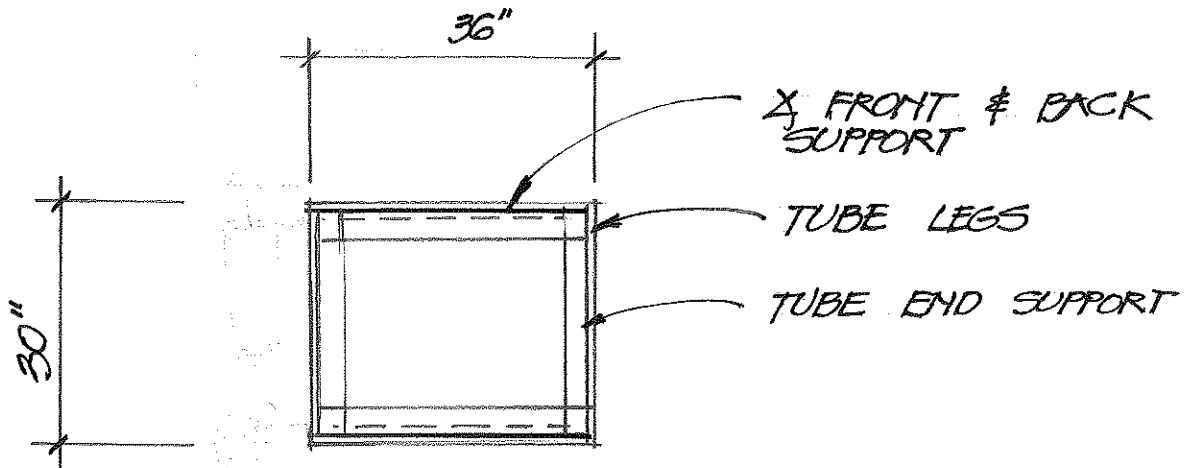
COOLEY LABORATORY RENOVATION
MODIFICATIONS

September 14, 2012

Cecilia R. Vaniman AIA
Project Manager



ELEVATION - TABLE



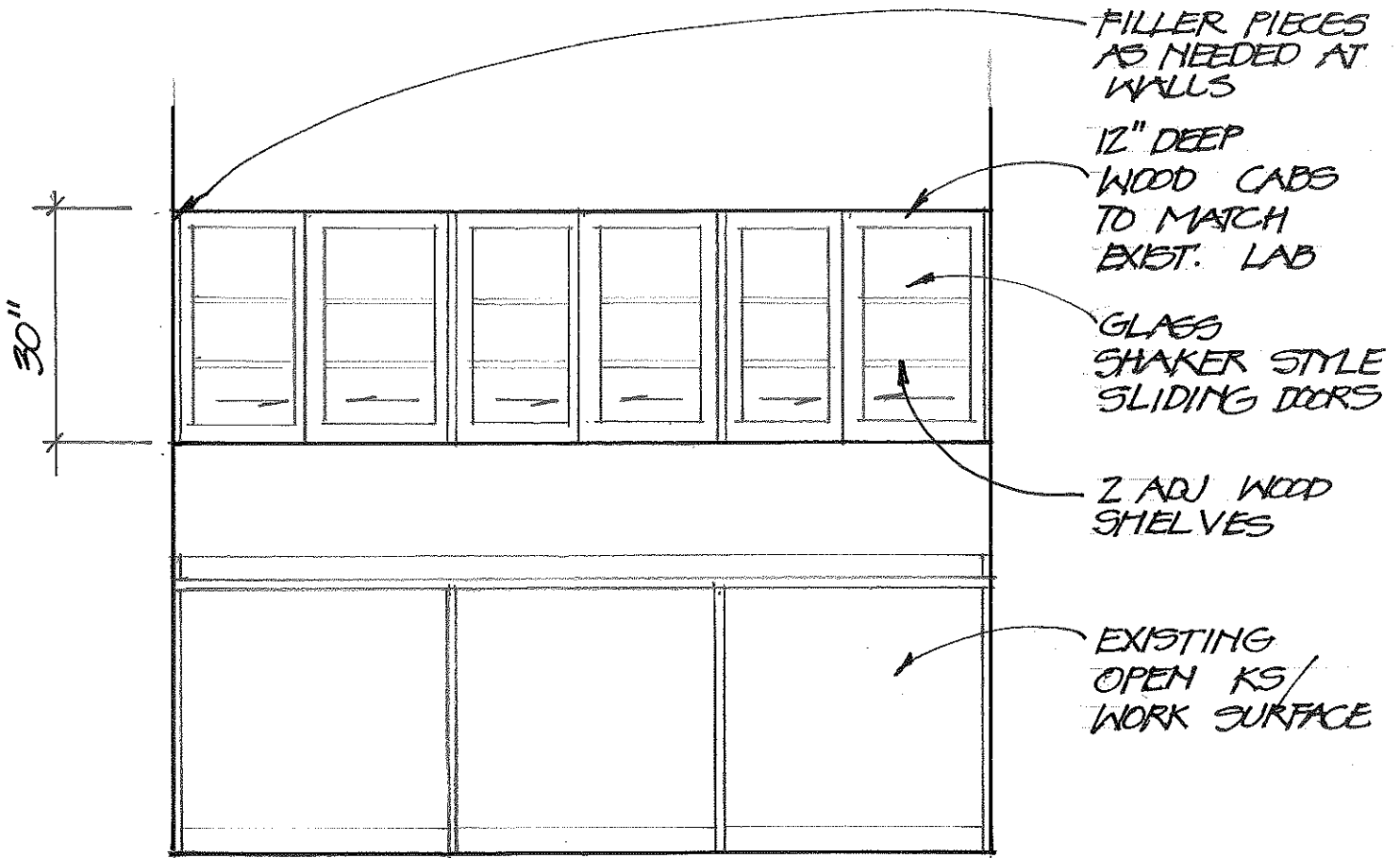
ALL WELDED CONNECTIONS - GRIND SMOOTH
POWDER COAT TO MATCH COOLEY LAB METALS

PLAN - TOP OF TABLE FRAME

CUSTOM TABLE FOR ROOM/LAB 129

COOLEY LABORATORY RENOVATION
MODIFICATIONS September 14, 2012

Cecilia R. Vaniman AIA
Project Manager



NORTH ELEVATION 228 B

3-36" CABINETS REQUIRED

NORTH ELEVATION 325

2-30" CABINETS REQ'D

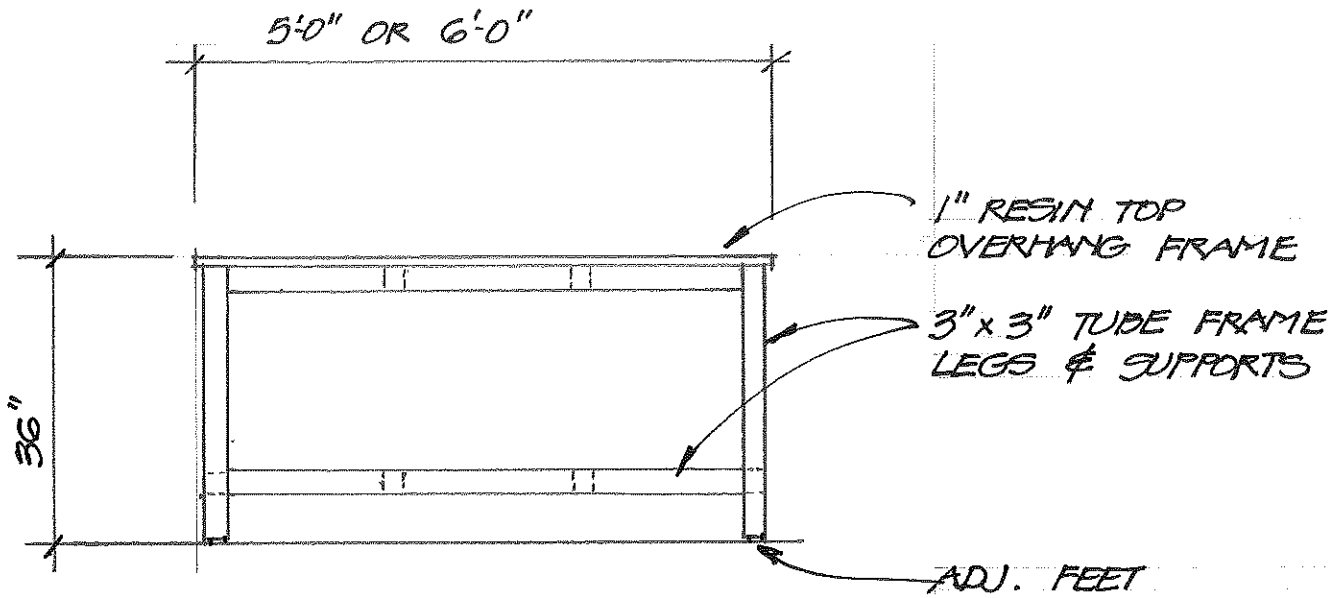
EAST ELEVATION 315

1-54" CABINET REQ'D

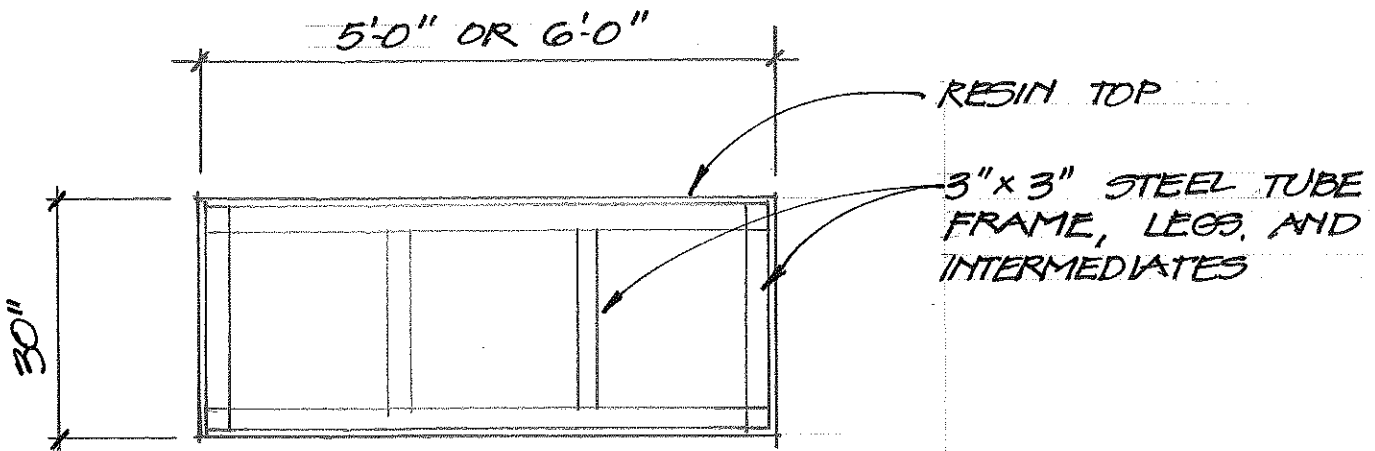
COOLEY LABORATORY RENOVATION
 MODIFICATIONS

September 14, 2012

Cecilia R. Vaniman AIA
 Project Manager



ELEVATION TABLE



PLAN - TABLES

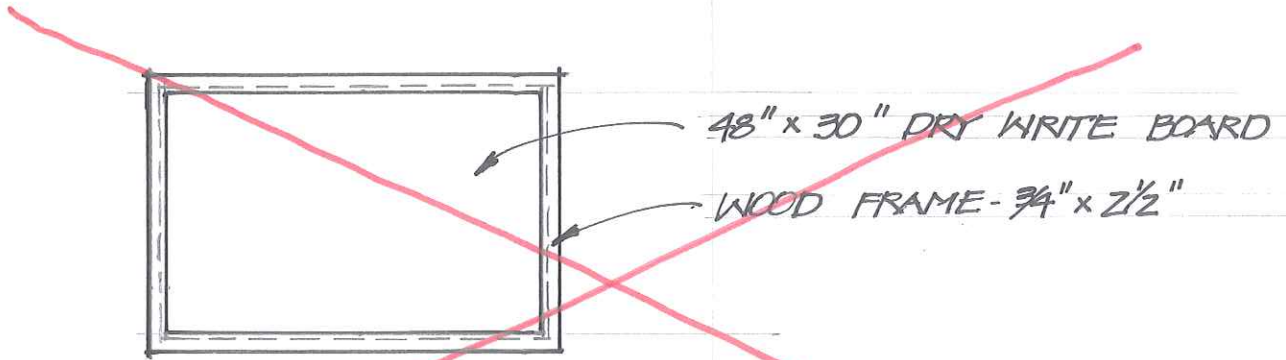
ALL WELDED CONNECTIONS - GRIND SMOOTH
POWDER COAT TO MATCH COOLEY LAB METAL

CUSTOM TABLES FOR LAB 428

COOLEY LABORATORY RENOVATION
MODIFICATIONS

September 14, 2012

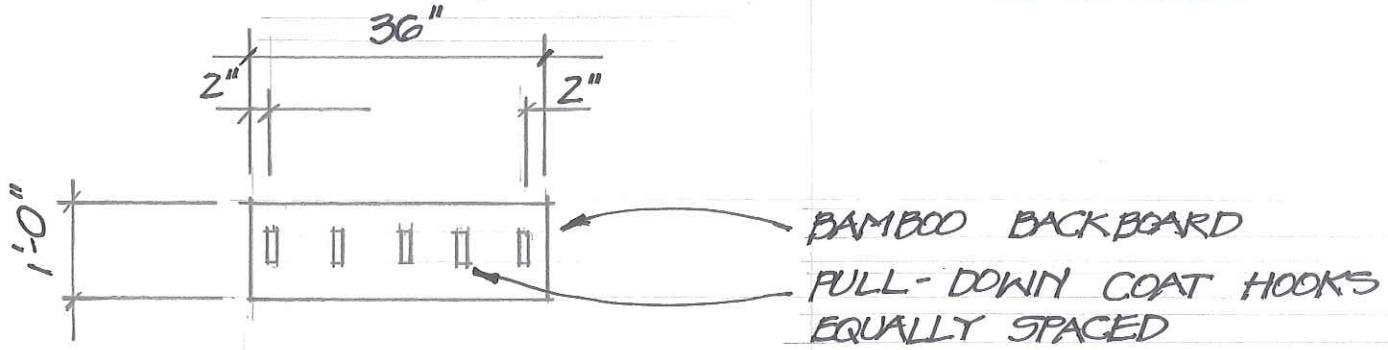
Cecilia R. Vaniman AIA
Project Manager



DRY WRITE BOARD - TYPICAL

1/2" = 1'-0"

SEE DETAIL 'D'
10-12-2012



COAT HOOKS

- 28" HOOK BACKBOARD W/ 4 HOOKS
- 36" HOOK BACKBOARD W/ 5 HOOKS
- 48" HOOK BACKBOARD W/ SHELF
- 9" HOOK BACKBOARD W/ 2 HOOKS