

ARC FIRST FLOOR REVISED LIGHTING PLAN

SCALE: 1/8"=1'-0"



524 FIRST AVENUE S
GREAT FALLS, MT 59401
PH 406.452.9558
FX 406.727.9720

2291 W BROADWAY
SUITE 4
MISSOULA, MT 59808
PH 406.721.5936
FX 406.721.8716

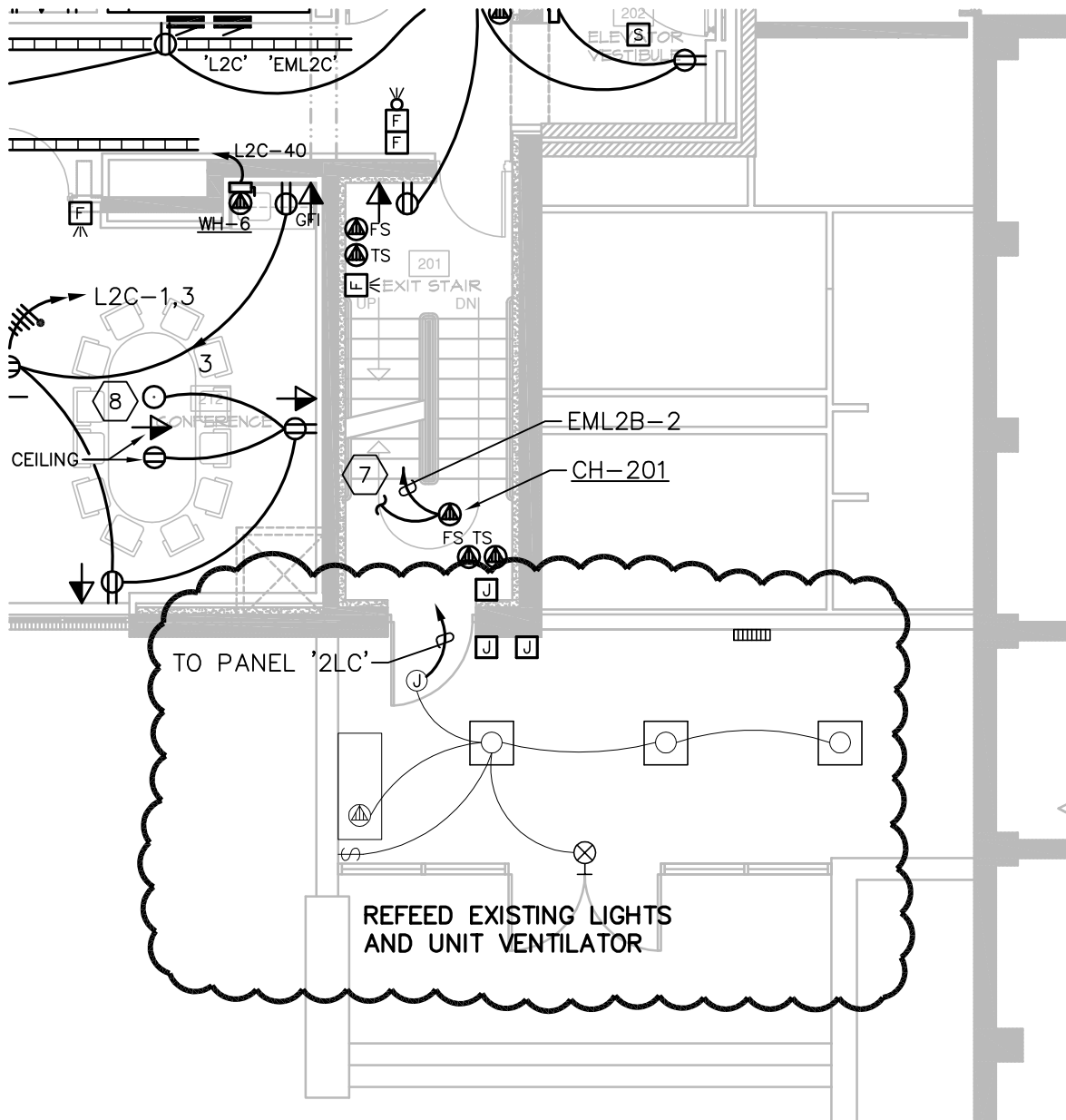
MONTANA STATE UNIVERSITY

COOLEY LAB REMODEL
BOZEMAN, MONTANA

REFERENCE SHEET:
E2.1

DATE
01/02/12
PROJECT NUMBER
100104

DRAWING
NUMBER
CE-9



PARTIAL SECOND FLOOR ELECTRICAL PLAN



524 FIRST AVENUE S
GREAT FALLS, MT 59401
PH 406.452.9558
FX 406.727.9720

2291 W BROADWAY
SUITE 4
MISSOULA, MT 59808
PH 406.721.5936
FX 406.721.8716

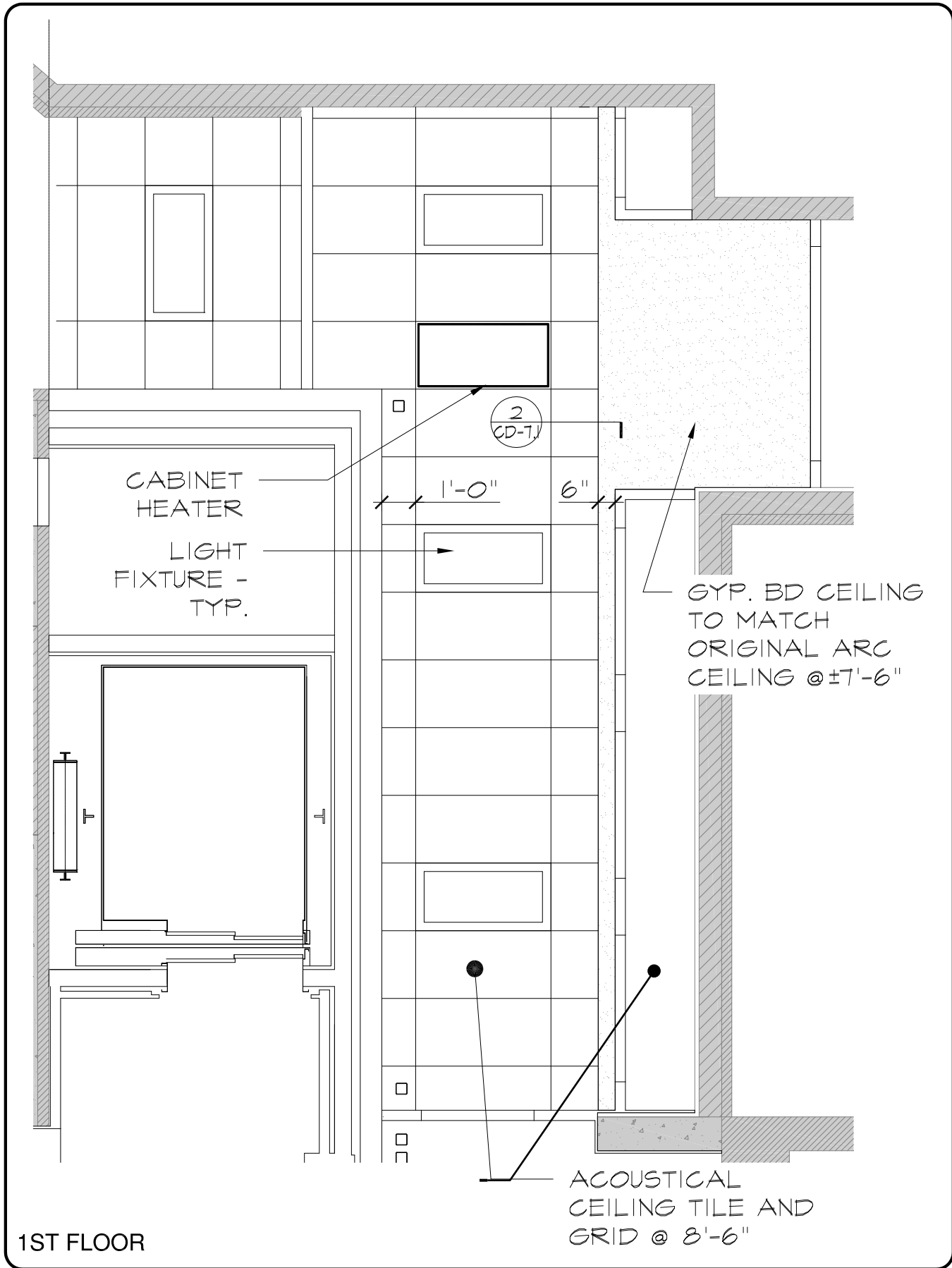

MONTANA STATE UNIVERSITY

COOLEY LAB REMODEL
BOZEMAN, MONTANA

REFERENCE SHEET:
E2.2

DATE
01/02/12
PROJECT NUMBER
100104

DRAWING
NUMBER
CE-10

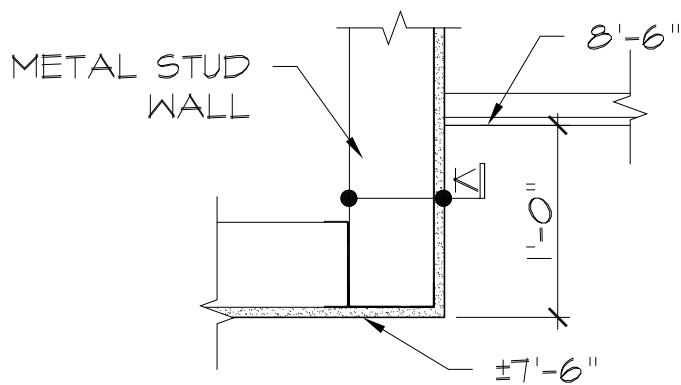
**Architects
Design
Group PC**

1 SUNSET PLAZA . KALISPELL, MONTANA
P 406.257.7125
E architects-design-group.com

Cooley Laboratory Remodeling
Bozeman, Montana
MSU PPA 10-0023
N.I.H. - N.C.R.R. Grant 1CO6RR30426
ADG Project 10-020

Clarification Drawing
CD-7.0

Date: 1.9.2012
Drawing Scale: ¼"=1'-0"



2 HEADER DETAIL
 1" = 1'-0"