

**REQUEST FOR PROPOSAL**

Project Title: Cooley Laboratory Renovation  
Location: Montana State University

PPA No.: 10-0023  
RFP No.: 34  
Date: 03/26/12

To: Dick Anderson Construction  
4498 Jackrabbit Lane  
Bozeman, MT 59718

Attention: Platisha

From: Cecilia Vaniman, Project Manager  
Cooley Lab Renovation  
Montana State University

Attention: \_\_\_\_\_

In order to expedite the Work and avoid or minimize delays in the Work the following proposal is requested. Please return a response by: 04/5/2012 Date Sent: 03/26/2012  
Date Received: \_\_\_\_\_

Proposal Requested:

**Revise Length of Emergency Shower head**

Drawing                      **Detail 1 Drawing Sheet QL4.1**

Specification Section    **11605 2.3.A.1 Laboratory Equipment – Emergency Shower C-C**

1. Revise the Emergency shower head assembly to be 22” from the wall to the center of Shower head as shown.

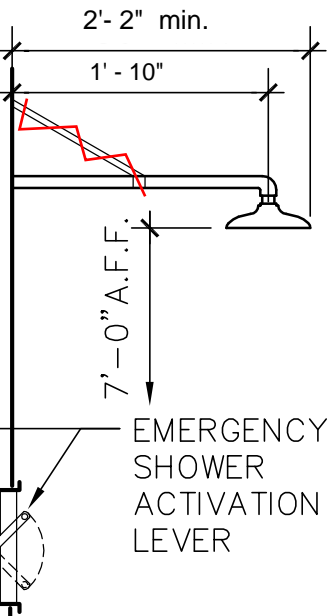
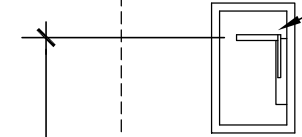
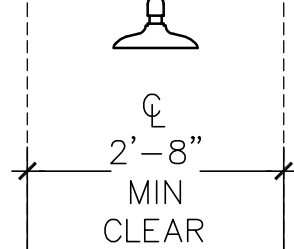
**This RFP is for pricing purposes only. The contractor shall not proceed with the scope of work described within until pricing is approved by the owner in writing.**

Distribution:     Owner                                       Architect                                       Engineer  
                          Agency                                       Contractor                                       Other

CHROME PLATED SUPPORT TO WALL,  
NOT PART OF SHOWER/EYEWASH  
ASSEMBLY



NOTE: ALL  
EMERGENCY  
SHOWERS  
MEET ADA  
ACCESSIBILITY  
GUIDELINES



(A) ELEVATION

(B) SECTION

# EMERGENCY SHOWER

1

1/2" = 1'-0"

<b>CHECKED BY: MO</b>		
<b>APPROVED BY: NW</b>		
REV	DESCRIPTION	DATE
NIH	SD/DD	07.23.2010
NIH	CD	12.01.2010
NIH	FINAL	03.14.2011

**BID SET**

M. A. ABSALONSON  
REG. NO. 1015  
F. J. DI STEFANO  
REG. NO. 1214  
G. D. ANACKER  
REG. NO. 1593  
KENNETH HUFF  
REG. NO. 3203  
K. W. STEEL  
MONTANA

**M.S.U. PPA 10-0023  
ADG 10-020**

SECTIONS  
AND  
DETAILS

# QL4.1

**March 14, 2011**

- **ESBF672** Recessed Emergency Shower, Stainless Steel Shower Head
- **ESBF672PCC** Recessed Emergency Shower, Chrome Plated Brass Shower Head

**APPLICATION:** Recessed emergency shower with wall mounted shower head. Recessed shower conserves valuable floor space, while eliminating the clutter and obstruction created by conventional shower equipment. Unit can be installed in either a corridor or a lab room, close to where accidents might occur.

**ADA COMPLIANCE:** When installed at recommended mounting heights, unit complies with ADA requirements for accessibility by handicapped persons.

**SHOWER HEAD:** 10" diameter stainless steel (SSBF672) or 8" diameter chrome plated cast brass (SSBF672PCC). Furnished with horizontal supply pipe and wall escutcheon.

**VALVE:** 1" IPS brass stay-open ball valve with stainless steel "panic bar." Pulling bar down activates shower; shower remains in operation until bar is returned to original closed position. Furnished with stainless steel access panel and 1" IPS unions for valve.

**PIPE AND FITTINGS:** Exposed pipe and escutcheon are brushed stainless steel.

**SUPPLY:** 1" IPS female inlet.

**SIGN:** ANSI-compliant identification sign.

**U.S. PATENT 5,768,721**

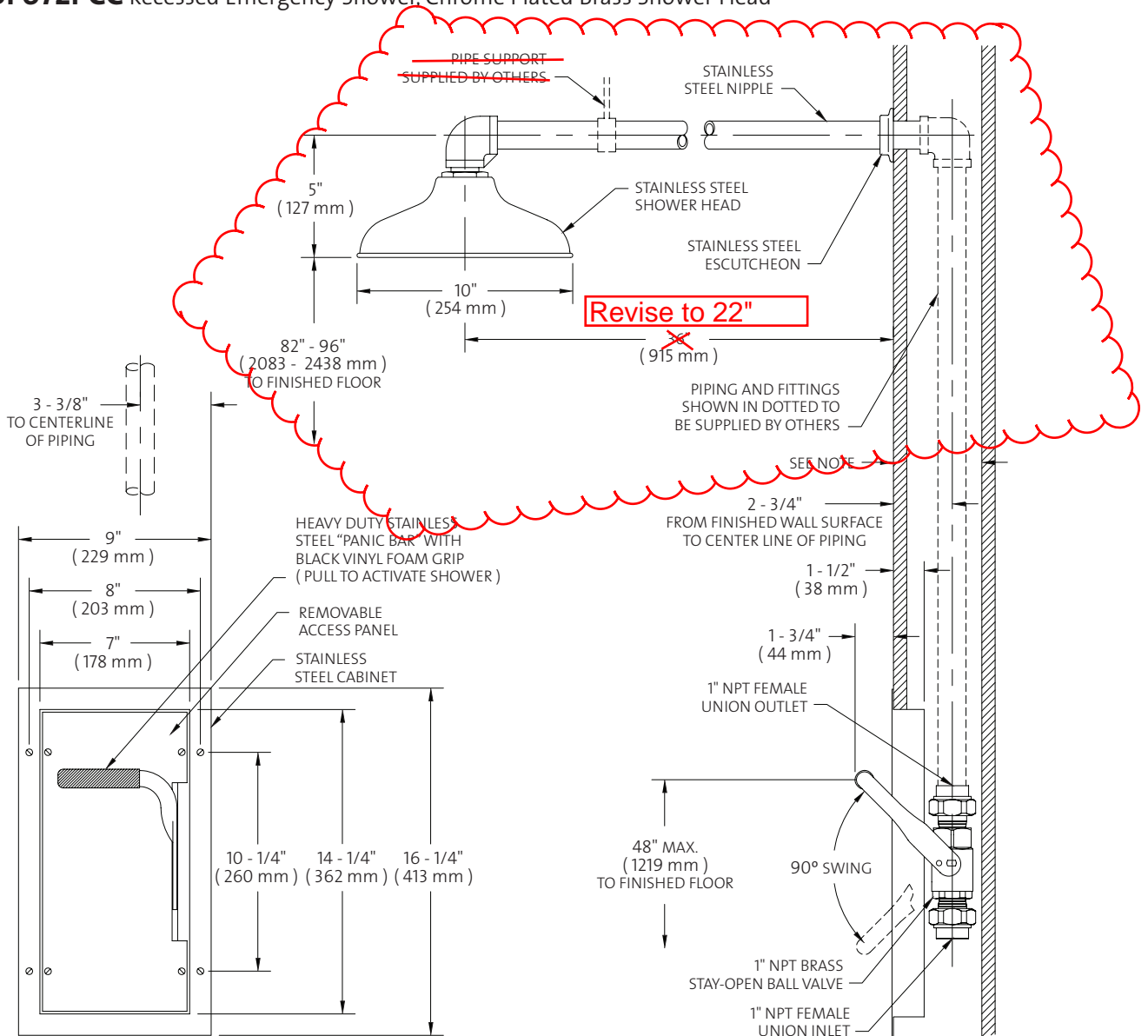
### Available Options

- **FC20** Regulates shower flow rate to 20 GPM.
- **AP250-065 MODESTY CURTAIN**  
Modesty curtain for wall mounting.
- **AP280-235 ELECTRIC LIGHT AND ALARM HORN**  
Flashing light/alarm horn unit is recess mounted in finished wall. Light is illuminated and horn sounds when shower is activated. Includes additional leads for remote monitoring.
- **TMV** AP3800 thermostatic mixing valve precisely blends hot and cold water to deliver warm (tepid) water as required by ANSI Z358.1-2004.



*Note: Shown with optional AP280-235 electric light and alarm horn unit (sold separately).*

- **ESBF672** Recessed Emergency Shower, Stainless Steel Shower Head
- **ESBF672PCC** Recessed Emergency Shower, Chrome Plated Brass Shower Head



**NOTES:**

1. A MINIMUM OF 5 - 7/8" IS REQUIRED FROM FINISHED WALL SURFACE TO REAR OF WALL CAVITY TO ACCOMMODATE UNIT.
2. STANDARD DIMENSION FROM SHOWER HEAD TO WALL IS 24". WHEN UNIT IS USED IN BARRIER-FREE APPLICATIONS, DIMENSION SHOULD BE 36".
3. U.S. PATENT NO. 5,768,721.

THIS SPACE FOR ARCHITECT/ENGINEER APPROVAL

Due to continuing product improvement, the information contained in this document is subject to change without notice. All dimensions are ± 1/4" (6mm). rev. 0308

ETL Listed 101496.  
Units have been tested to and comply with ANSI Z358.1 - 2004



**Sign Included**

