



REQUEST FOR PROPOSAL

Project Title: Cooley Laboratory Renovation
Location: Montana State University

PPA No.: 10-0023
RFP No.: 29
Date: 02/22/12

To: Dick Anderson Construction
4498 Jackrabbit Lane
Bozeman, MT 59718

Attention: Platisha

From: Cecilia Vaniman, Project Manager
Cooley Lab Renovation
Montana State University

Attention:

In order to expedite the Work and avoid or minimize delays in the Work the following proposal is requested. Please return a response by: 02/28/2012 Date Sent: 02/22/2012 Date Received:

Proposal Requested:

INTERIOR ARCHITECTURAL CASEWORK

Reference Drawings: Annotated ACI Shop Drawings – A7.0 Details 4-5-6-7-8-9-10-11 & 12

Reference Specifications: 06 6402

Provide pricing to revise cabinet construction per the attached shop drawing markups.

All door edging – sides to match exterior cabinet revisions
Pulls to be Satin Stainless Steel.

Color of Maple Stained to match ISEC Roasted Acorn #23-220-M
Drawer Box Construction to be plywood.

This RFP is for pricing purposes only. The contractor shall not proceed with the scope of work described within until pricing is approved by the owner in writing.

Distribution: [ ] Owner [ ] Agency [x] Architect [x] Contractor [ ] Engineer [ ] Other

# Montana State University Cooley Lab Renovation Bozeman, Montana

- ACCEPTED  
 ACCEPTED AS NOTED  
 NOT ACCEPTED, REVISE & RESUBMIT  
 ACTION NOT REQUIRED

This review was performed only for general conformance with the design concept of the project and general compliance with the information given in the Contract Documents. Modifications or comments made on the shop drawings during this review do not relieve contractor from compliance with the requirements of the plans and specifications. Approval of a specific item does not include approval of the assembly of which the item is a component. Contractor is responsible for dimensions to be confirmed and correlated at the jobsite information that pertains solely to the fabrication processes or to the means, methods, techniques, sequences, and procedures or construction; coordination of the work of all trades, and for performing all work in a safe and satisfactory manner.

ARCHITECTS DESIGN GROUP  
 Date 1-17-12 By [Signature]

PLASTIC LAMINATE DOOR AND DRAWER FACES WILL BE REPLACED BY WOOD VENEER COMPOSITE WITH SOLIC WOOD EDGES. EXACT REQUIREMENTS TO BE OUTLINEC IN SEPARATE RFP

SPECIFIED PULLS ARE BRASS WITH 10B FINISH: REPLACE WITH SATIN STAINLESS STEEL -

CABINET EDGES ARE SPECIFIED AS HPDL NOT .018 PVC. THIS WILL CHANGE TO 3MM PVC EDGEBAND TO MATCH WOOD FACES

The ownership of this document transfers to \_\_\_\_\_ upon signing a design contract between the client and Accurate Casework Industries. These drawings will not be released to the client until a contract is signed by both parties. Until a contract is signed, these drawings will remain the exclusive property of Accurate Casework Industries. and may not be reproduced, disclosed or discussed, in whole or in part, with any third parties without having the express written permission of Accurate Casework Industries.



ARCHITECT:  
**Architects Design Group, P.C.**  
 1 Sunset Plaza  
 Kalispell, Montana  
 Ph: 406.257.7125

These drawings indicate the products to be custom manufactured and adjacent work that may affect fabrication and installation. Refer to our most recent quote for the exact items to be supplied. Fabrication begins after these drawings are approved and returned. Accurate Casework Industries will field measure between-wall dimensions and jobsite conditions prior to fabrication. To avoid delays and misinterpretations, review and return in a timely manner. Should these drawings be revised, Accurate Casework Industries reserves the right to amend price and/or production schedules.

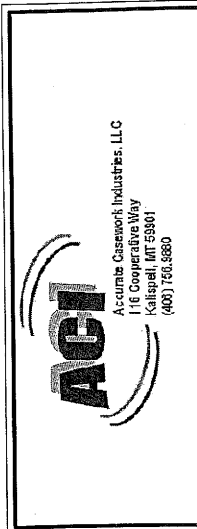
**WARRANTIES:** Void if environment (humidity) does not meet (AWI) climatic specifications or damage by others.

**DICK ANDERSON  
CONSTRUCTION, INC.**

- NO EXCEPTIONS NOTED  
 EXCEPTIONS NOTED  
 RETURNED FOR CORRECTION

SUBMITTAL NO.: 89  
 SECTION NO.: 640Z  
 DWG.: \_\_\_\_\_  
 REVIEWED BY: TAT  
 DATE: 4/5/12

**THIS SUBMITTAL REVIEW FOR  
 GENERAL CONFORMITY WITH THE  
 REQUIREMENTS OF THE CONTRACT  
 DOCUMENTS. REVIEW DOES NOT  
 RELIEVE CONTRACTOR FROM ANY  
 OBLIGATIONS UNDER THE CONTRACT  
 DOCUMENTS.**



Montana State University  
**Cooley Lab Renovation**  
 Bozeman, Montana

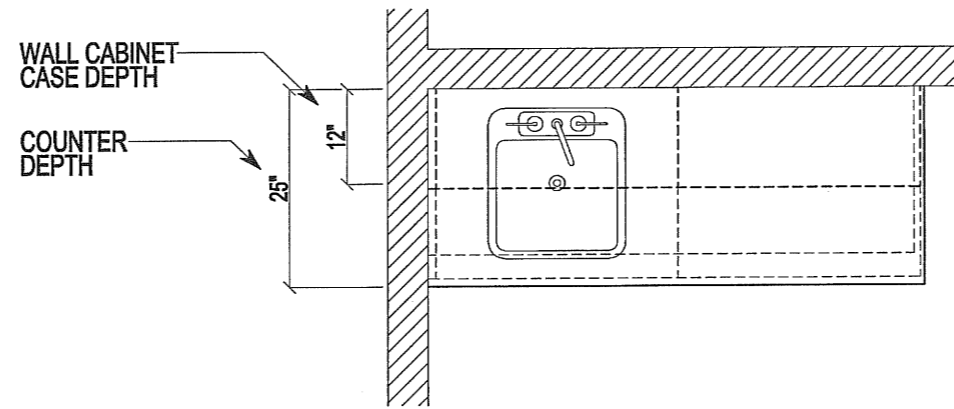
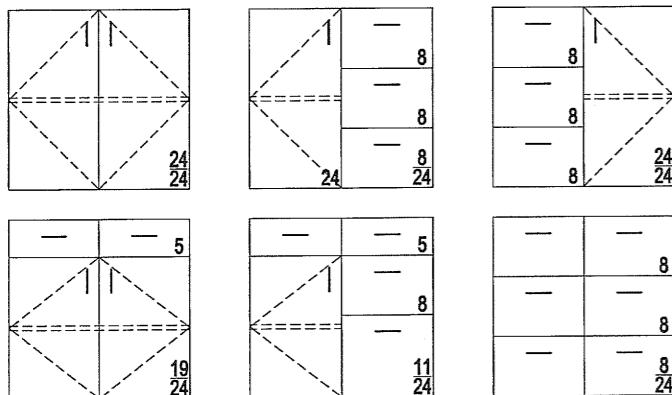
ORIGINAL ISSUE:	12-1-11
FIRST REVISION:	
SECOND REVISION:	
THIRD REVISION:	
ARCHITECT:	
ACCURATE CASEWORK:	
QUICK DRAW:	1184
DRAWN BY:	BAI

**COVER**

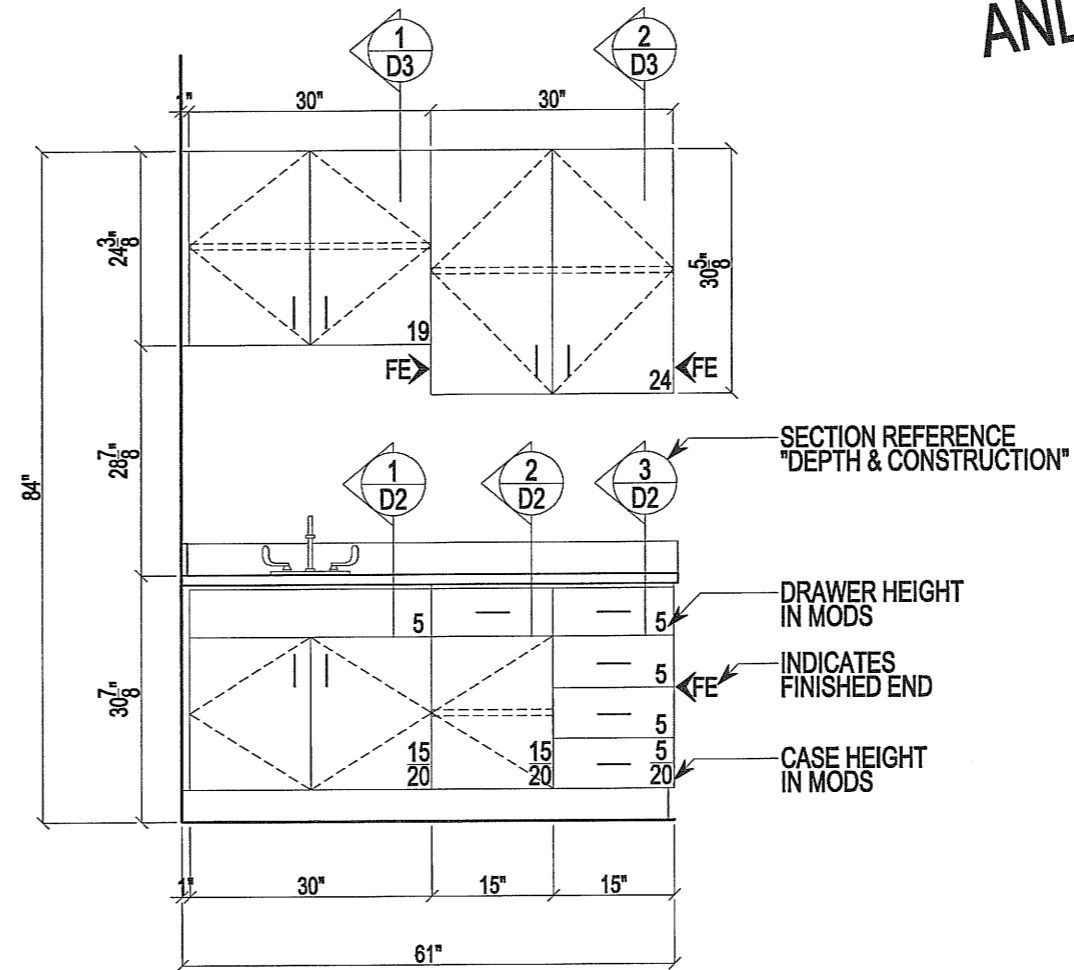
## 32mm Cabinet Construction:

The 32mm system for building cabinets is an integrated manufacturing process of materials, hardware and machinery. Cabinets boxes are built in increments of 32mm and cabinet heights are critical for maintaining the integrity of the system. Cabinet parts and hardware are in precision alignment with the 32mm linebore holes inside the cabinet box. Hardware installation is faster and alignment issues eliminated. Doors and drawer fronts are in increments of 32mm for a combined total equal the height of the cabinet box. Cabinet widths and depths are limited only by material sizes. The 32mm system standardizes part sizes and drilling patterns maximizing efficiency and quality control in the manufacturing process. The streamlined process delivers a higher quality product to the jobsite quicker, while minimizing the need for onsite adjustments.

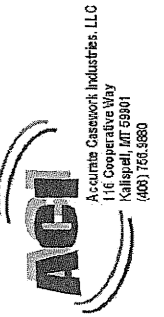
Accurate Casework Industries builds European style cabinets to meet and exceed AWI requirements. Cabinet boxes are all  $\frac{3}{4}$ " panel products,  $\frac{1}{2}$ " solid backs with dowel construction. Drawer boxes are  $\frac{5}{8}$ " white melamine with dowel construction on Blum 100lb. capacity slides. Door hinges are Hafele Aximat 300 series 270° swing, fully adjustable. Adjustable shelves are standard  $\frac{3}{4}$ " thick on (4) 5mm metal spoon shaped shelf rests. Accurate Casework Industries supply ladder style toekicks for cabinet bases insuring efficient and professional installations.



**SAMPLE PLAN  
AND ELEVATION**



ELEVATION NUMBER	1	ROOM DESCRIPTION	BREAKROOM	ROOM NUMBER	105
SCALE	$\frac{1}{2}'' = 12''$	COUNTER / SPLASH:	PLASTIC LAMINATE	MATERIALS OR COLOR SELECTIONS	
ARCHITECTURAL REFERENCES		COUNTER SUPPORTS:	PLASTIC LAMINATE		
		PLAN:	1/A-102	CABINET EXTERIORS:	<del>PLASTIC LAMINATE</del> MAPLE
		ELEV:	6/A-400	CLOSED INTERIORS:	MELAMINE
		SECT:	15/A-405	EDGE BANDING:	
		SPECIALTIES:			



Montana State University  
**Cooley Lab Renovation**  
Bozeman, Montana

ORIGINAL ISSUE:  
12-1-11  
FIRST REVISION:  
SECOND REVISION:  
THIRD REVISION:  
ARCHITECT:  
ACCURATE CASEWORK:  
QUICK DRAW:  
1184  
DRAWN BY:  
BAI

# DRAWING INDEX:

#:	ROOM:	DESCRIPTION:	SHEET:
1	104	COFFEE CABINET	01
2	212	CONFERENCE	01
3	224	CUSTODIAL	02
4	303	CORRIDOR	02
5	318	CUSTODIAL	03
6	403	CORRIDOR	03
7			
8			
9			
10			
11			
12			
13			
14			
15			
16			
17			
18			
19			
20			

SECTIONS & DETAILS: D1 - D5

## FINISH SELECTIONS:

CABINET INTERIOR COLOR BEHIND DOORS:

WHITE: ALMOND: BLACK: OTHER:

PLASTIC LAMINATE: Wilsonart: Standard, non-premium ARCHITECT PLEASE CONFIRM LAMINATE LOCATIONS

- PL-1
- PL-2
- PL-3
- PL-4
- PL-5
- PL-6
- PL-7
- PL-8

EDGE BAND:

- EB-1
- EB-2
- EB-3
- EB-4

WOOD SPECIES:

STAIN:

FINISH:

NOTE: These submittal drawings indicate materials and finishes in accordance with our most recent quote and our interpretation of the plans and specifications. Please thoroughly review and mark any necessary corrections. Project materials and finishes will be per shop drawings, unless noted otherwise.

# PROJECT SPECIFICATION:

CASEWORK TYPE: WOOD:  PLASTIC LAMINATE:  OTHER:

CABINET STYLE: Full Overlay  
 Cabinet box construction: Two sided melamine thermo fused to 3/4" M2 particle board core with 1/2" melamine back panels  
 Exterior finish: Vertical grade high pressure plastic laminate  
 Drawer box: 5/8" melamine drawer box with 1/2" plant on melamine bottom panel  
 Bases: Ladder type construction using 3/4" particle board or 3/4" plywood  
 Edge treatment: Doors & Drawer Fronts - 3mm PVC edgeband  
 Cabinet Edge - .018" PVC edgeband  
 Open Shelving Cabinets: Melamine interiors to match cabinet interiors or as noted otherwise

### COUNTER TOP - OPTION #1:

Horizontal grade high pressure plastic laminate on 1 1/8" particle board substrate with brown .030" backer sheet, finished edges to be solid color 3mm PVC (to match or contrast) surface laminate color.

### COUNTER TOP - OPTION #2

Horizontal grade high pressure plastic laminate on 3/4" particle board substrate with 3/4" x 4" build-up on outside edges for 1 1/2" finished thickness.

### COUNTER TOP - OPTION #3

Horizontal grade high pressure plastic laminate on 3/4" plywood substrate with 3/4" x 4" build-up on outside edges for 1 1/2" finished thickness.

### COUNTER TOP - OPTION #4

1/2" thick solid surface deck material on 1" thick particle board substrate with 1 1/2" build-up at front edge, back & end splash to be set on application with sealant applied first

### HARDWARE:

Pulls: Hafele 116.07.429 104 x 30 ~~steel, satin chrome~~ **STAINLESS STEEL**  
 Hinges: Hafele 344.06.810 dowel mounted cup, aximat 300  
 Hinges: Hafele 344.06.900 dowel mounted arm aximat 300  
 Standard Drawer Slides: Blum 430E full extension  
 Shelf Adjustment: 32mm linebore  
 Shelf Support: Hafele 282.47.702 double pin locking shelf clip  
 Window Sills: 1/2" solid surface material (verify manufacturer & color)

NOTE: Architect to verify all hardware selections

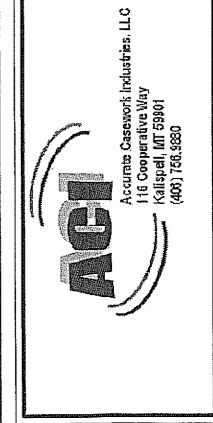
### SPECIALTIES:

- 1) \_\_\_\_\_
- 2) \_\_\_\_\_
- 3) \_\_\_\_\_

### EQUIPMENT & APPLIANCE SIZES: (ARCHITECT VERIFY AT APPROVAL TIME)

- 1) \_\_\_\_\_
- 2) \_\_\_\_\_
- 3) \_\_\_\_\_
- 4) \_\_\_\_\_
- 5) \_\_\_\_\_
- 6) \_\_\_\_\_

NOTE: Medium density fiberboard ANSI A 208.2 grade MD made with (urea formaldehyde free) binder

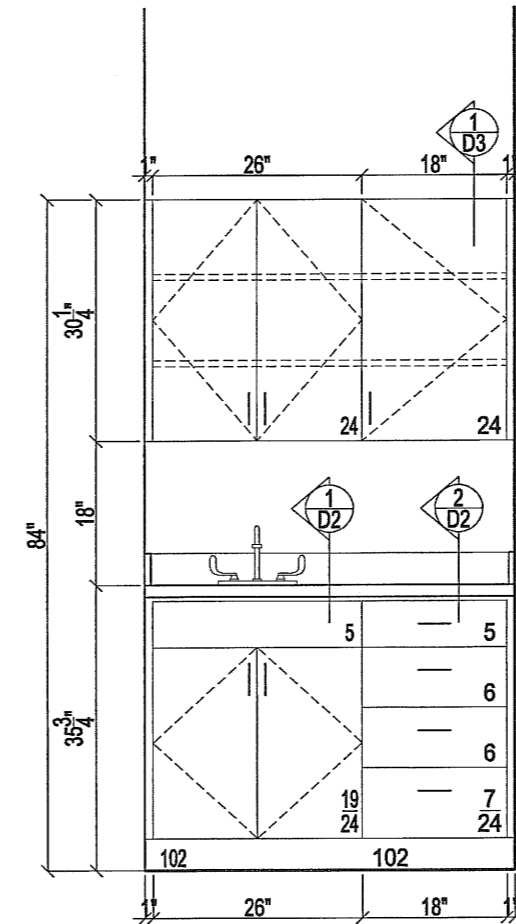
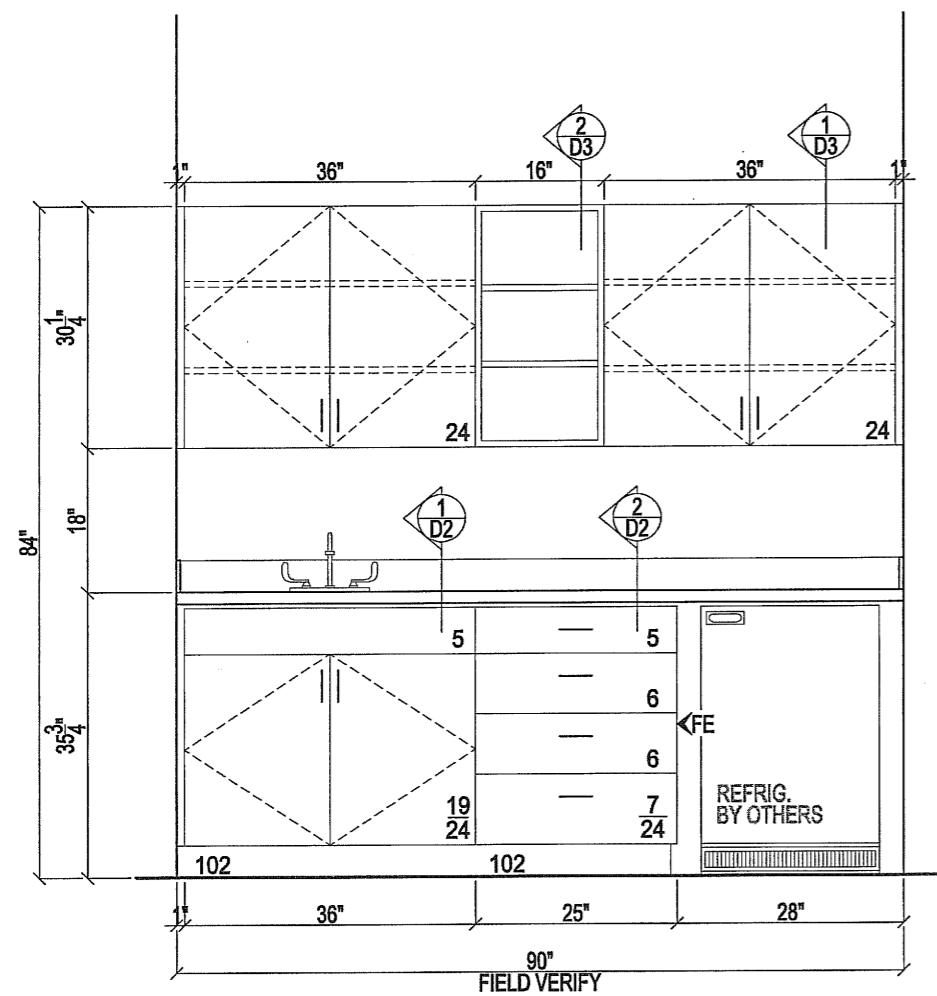
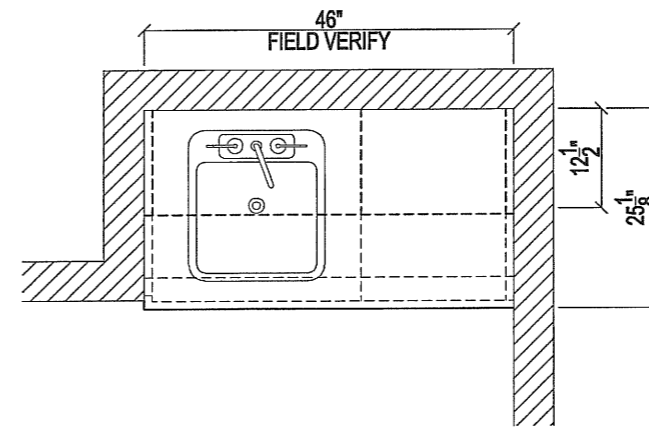
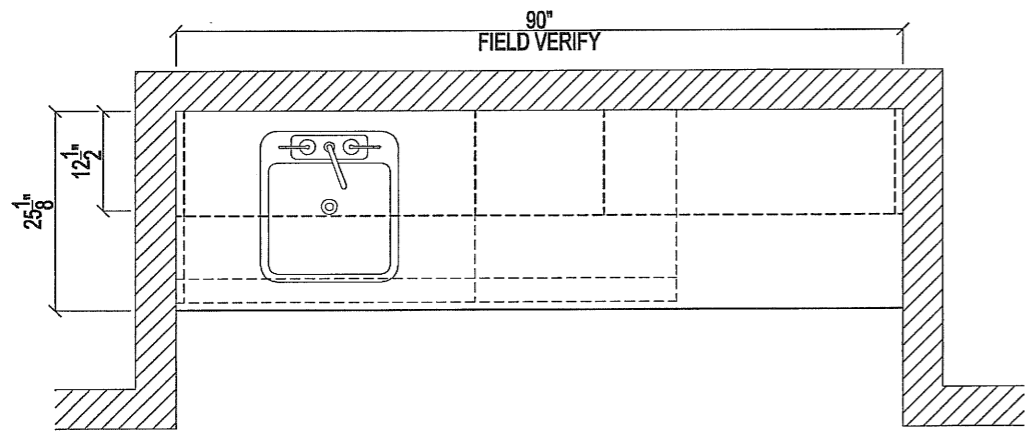


Montana State University  
**Cooley Lab Renovation**  
 Bozeman, Montana

*Counter Top Color: Corian "Aqualite"*  
*Window Sill Color: Corian "Sahara"*

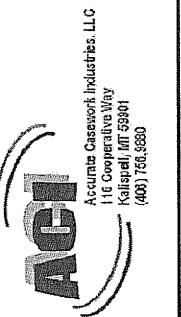
ORIGINAL ISSUE:	12-1-11
FIRST REVISION:	
SECOND REVISION:	
THIRD REVISION:	
ARCHITECT:	
ACCURATE CASEWORK:	
QUICK DRAW:	1184
DRAWN BY:	BAI

**INDEX**



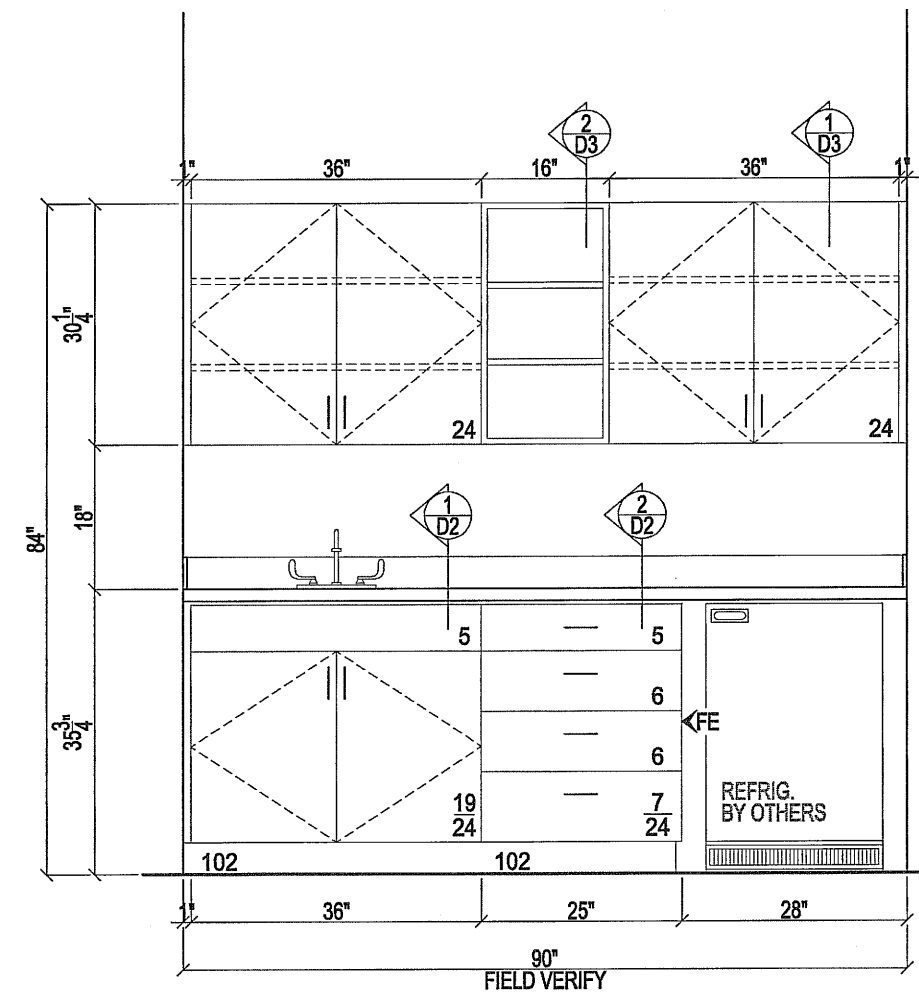
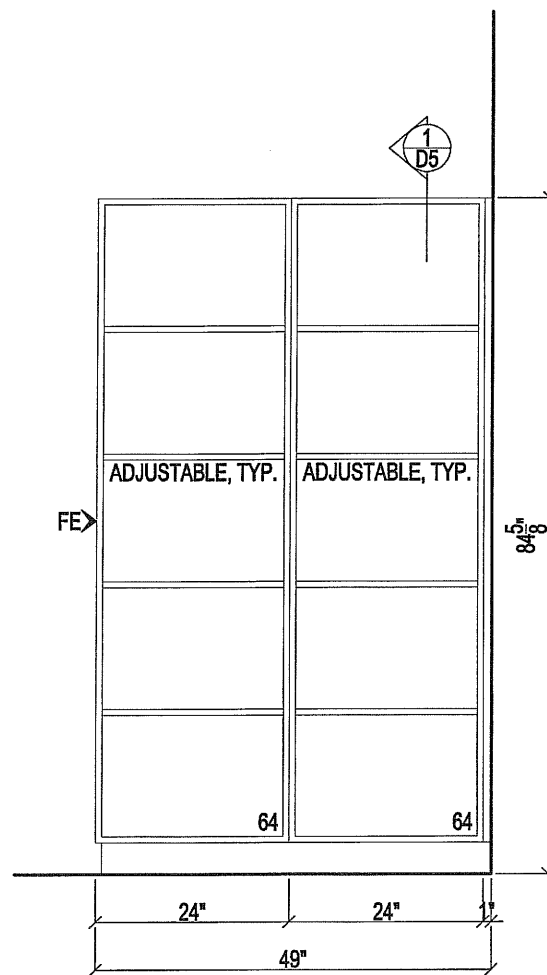
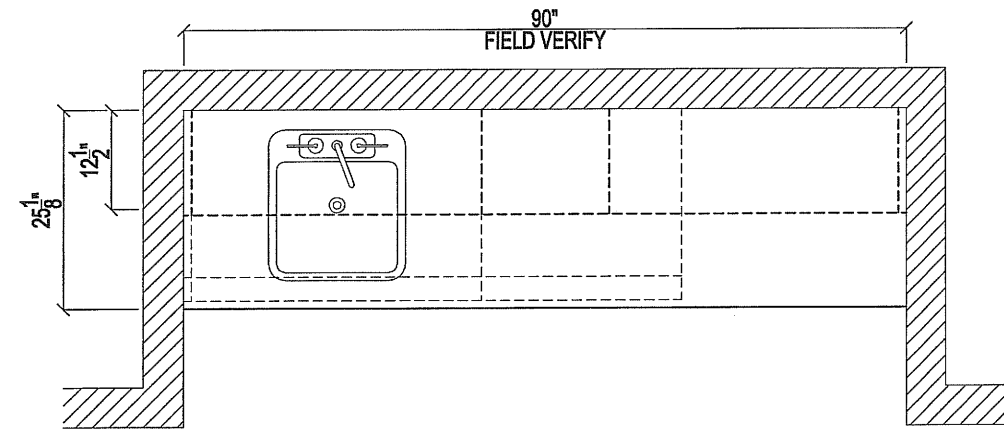
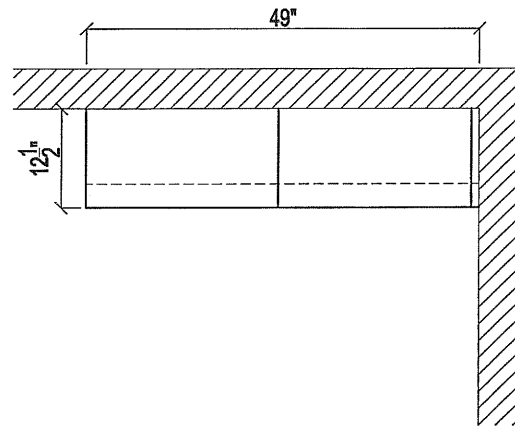
<b>1</b>	<b>COFFEE CABINET</b>	<b>104</b>
	COUNTER / SPLASH:	SOLID SURFACE
1/2" = 12"	CABINET EXTERIORS:	<del>PLASTIC LAMINATE</del> MAPLE
PLAN:	CLOSED INTERIORS:	MELAMINE
ELEV: 4/A7.0	OPEN INTERIORS:	<del>MELAMINE</del> MAPLE
SECT: A7.0	EDGE BANDING:	
SPECIALTIES:		

<b>2</b>	<b>CONFERENCE</b>	<b>212</b>
	COUNTER / SPLASH:	SOLID SURFACE
1/2" = 12"	CABINET EXTERIORS:	<del>PLASTIC LAMINATE</del> MAPLE
PLAN:	CLOSED INTERIORS:	MELAMINE
ELEV: 5/A7.0	EDGE BANDING:	
SECT: A7.0		
SPECIALTIES:		



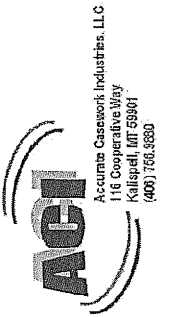
Montana State University  
**Cooley Lab Renovation**  
 Bozeman, Montana

ORIGINAL ISSUE:	12-1-11
FIRST REVISION:	
SECOND REVISION:	
THIRD REVISION:	
ARCHITECT:	
ACCURATE CASEWORK:	
QUICK DRAW:	1184
DRAWN BY:	BAI



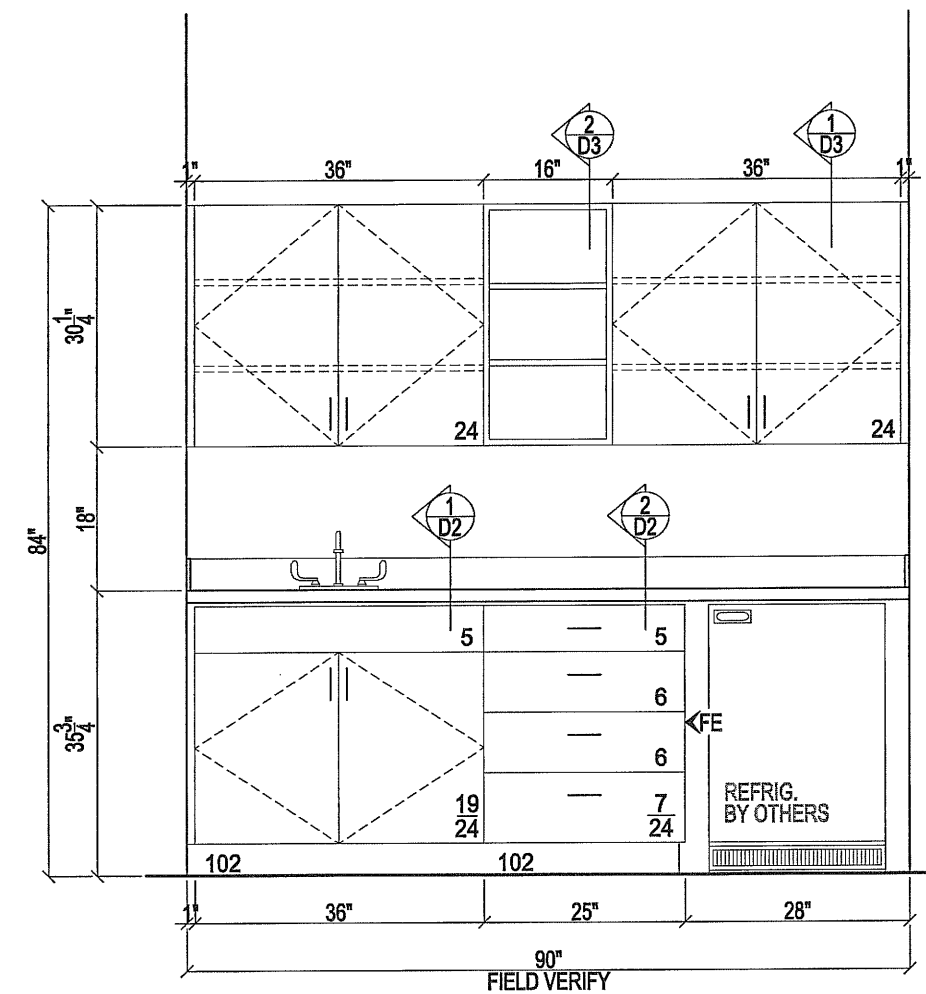
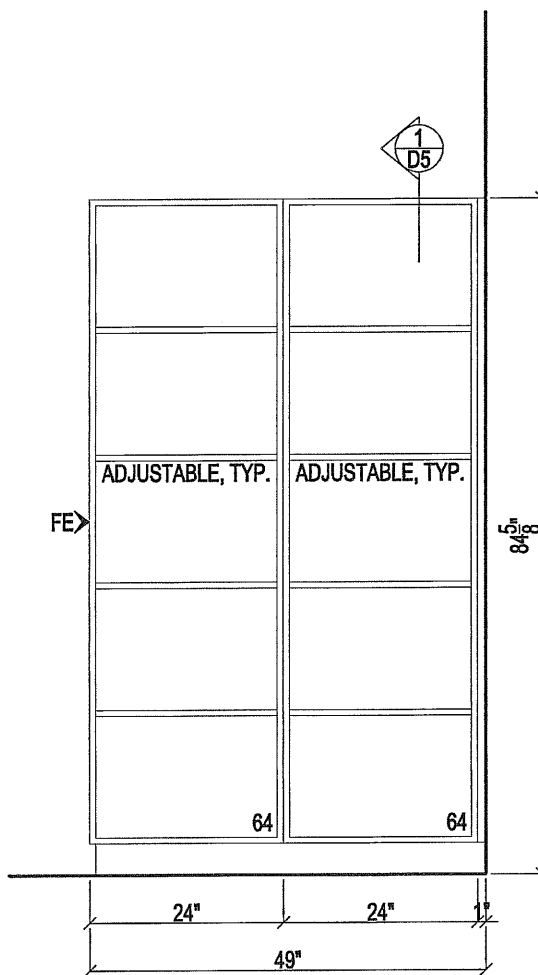
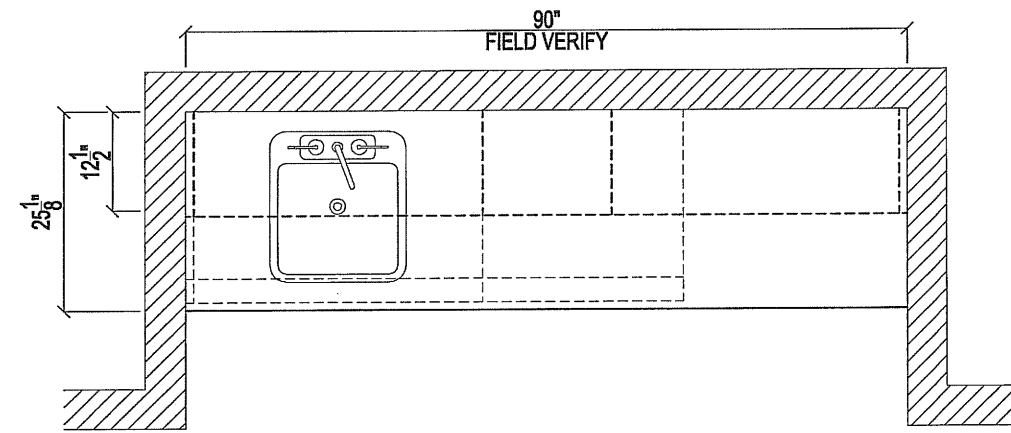
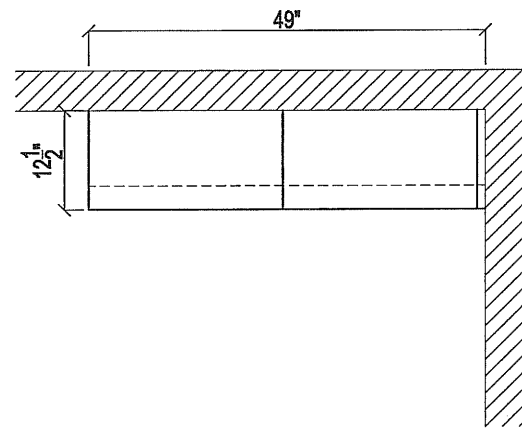
<b>1</b>	<b>CUSTODIAL</b>	<b>224</b>
1/2" = 12"		
PLAN: -	OPEN INTERIORS: MELAMINE	
ELEV: 7/A7.0		
SECT: 12/A7.0	EDGE BANDING:	
SPECIALTIES:		

<b>2</b>	<b>CORRIDOR</b>	<b>303</b>
1/2" = 12"		
PLAN: -	COUNTER / SPLASH: SOLID SURFACE <i>Corian "Aqualite"</i>	
ELEV: 4/A7.0	CABINET EXTERIORS: <del>PLASTIC LAMINATE</del> <b>MAPLE</b>	
SECT: A7.0	CLOSED INTERIORS: MELAMINE	
	OPEN INTERIORS: <del>MELAMINE</del> <b>MAPLE</b>	
SPECIALTIES:		



Montana State University  
**Cooley Lab Renovation**  
 Bozeman, Montana

ORIGINAL ISSUE:	12-1-11
FIRST REVISION:	
SECOND REVISION:	
THIRD REVISION:	
ARCHITECT:	
ACCURATE CASEWORK:	-
QUICK DRAW:	1184
DRAWN BY:	BAI



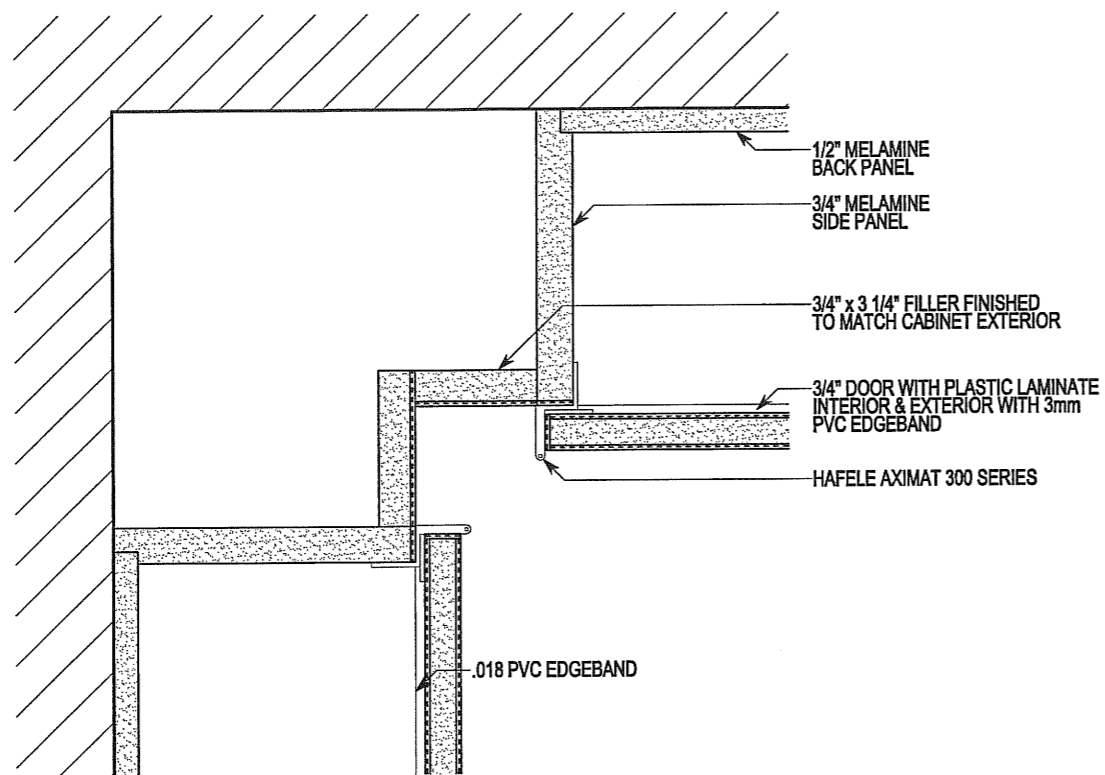
<b>1</b>	<b>CUSTODIAL</b>	<b>318</b>
1/2" = 12"		
PLAN: -	OPEN INTERIORS: MELAMINE	
ELEV: 7/A7.0		
SECT: 12/A7.0	EDGE BANDING:	
SPECIALTIES:		

<b>2</b>	<b>CORRIDOR</b>	<b>403</b>
1/2" = 12"	COUNTER / SPLASH: SOLID SURFACE	
PLAN: -	CABINET EXTERIORS: <del>PLASTIC LAMINATE</del> MAPLE	
ELEV: 4/A7.0	CLOSED INTERIORS: MELAMINE	
SECT: A7.0	OPEN INTERIORS: <del>MELAMINE</del> MAPLE	
EDGE BANDING:		
SPECIALTIES:		

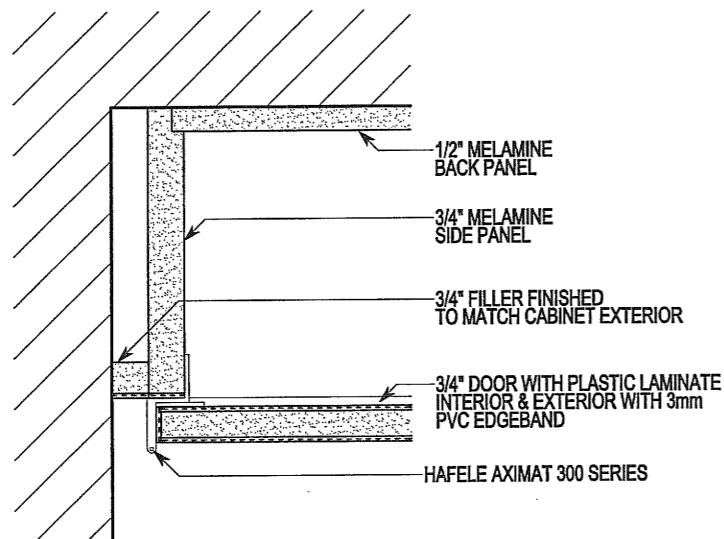


Montana State University  
**Cooley Lab Renovation**  
 Bozeman, Montana

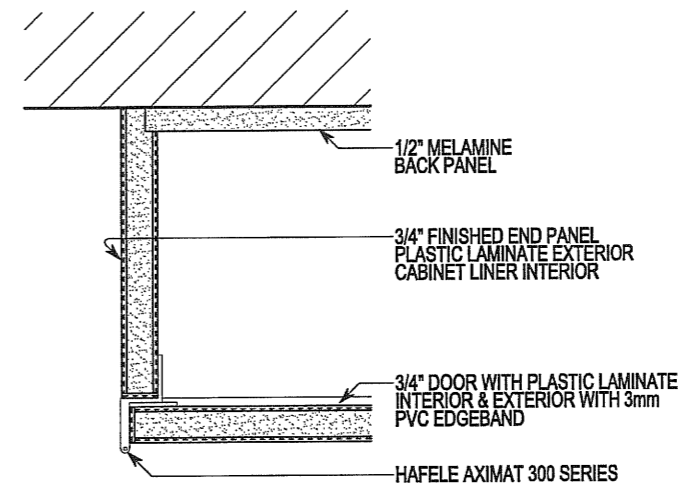
ORIGINAL ISSUE:	12-1-11
FIRST REVISION:	
SECOND REVISION:	
THIRD REVISION:	
ARCHITECT:	
ACCURATE CASEWORK:	
QUICK DRAW:	1184
DRAWN BY:	BAI



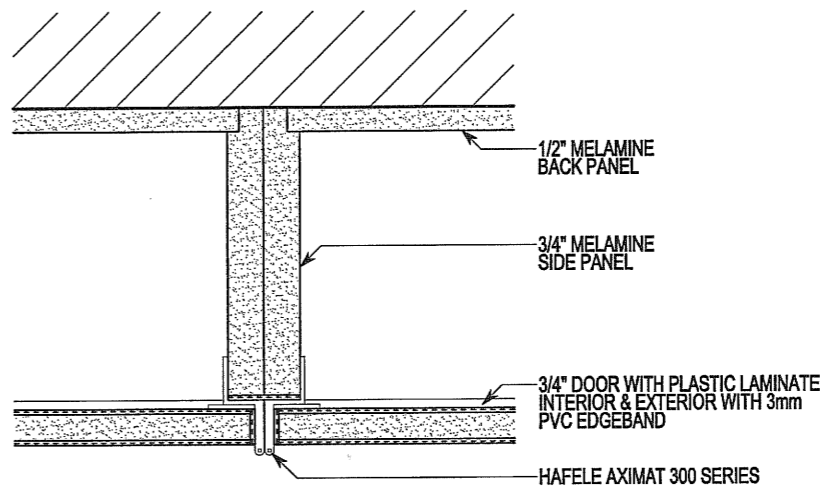
<b>A</b>	<b>TYPICAL DETAIL - CORNER -</b>	
	3" = 12"	COUNTER / SPLASH: DOOR / DRAWER:
PLAN:	-	TYPICAL DETAILS: SEE ELEVATIONS / SECTIONS FOR MATERIALS / FINISHES
ELEV:	-	
SECT:	-	



<b>C</b>	<b>TYPICAL DETAIL - FILLER -</b>	
	3" = 12"	COUNTER / SPLASH: DOOR / DRAWER:
PLAN:	-	TYPICAL DETAILS: SEE ELEVATIONS / SECTIONS FOR MATERIALS / FINISHES
ELEV:	-	
SECT:	-	



<b>B</b>	<b>TYPICAL DETAIL - FINISHED END -</b>	
	3" = 12"	COUNTER / SPLASH: DOOR / DRAWER:
PLAN:	-	TYPICAL DETAILS: SEE ELEVATIONS / SECTIONS FOR MATERIALS / FINISHES
ELEV:	-	
SECT:	-	



<b>D</b>	<b>TYPICAL DETAIL - ADJOINING -</b>	
	3" = 12"	COUNTER / SPLASH: DOOR / DRAWER:
PLAN:	-	TYPICAL DETAILS: SEE ELEVATIONS / SECTIONS FOR MATERIALS / FINISHES
ELEV:	-	
SECT:	-	

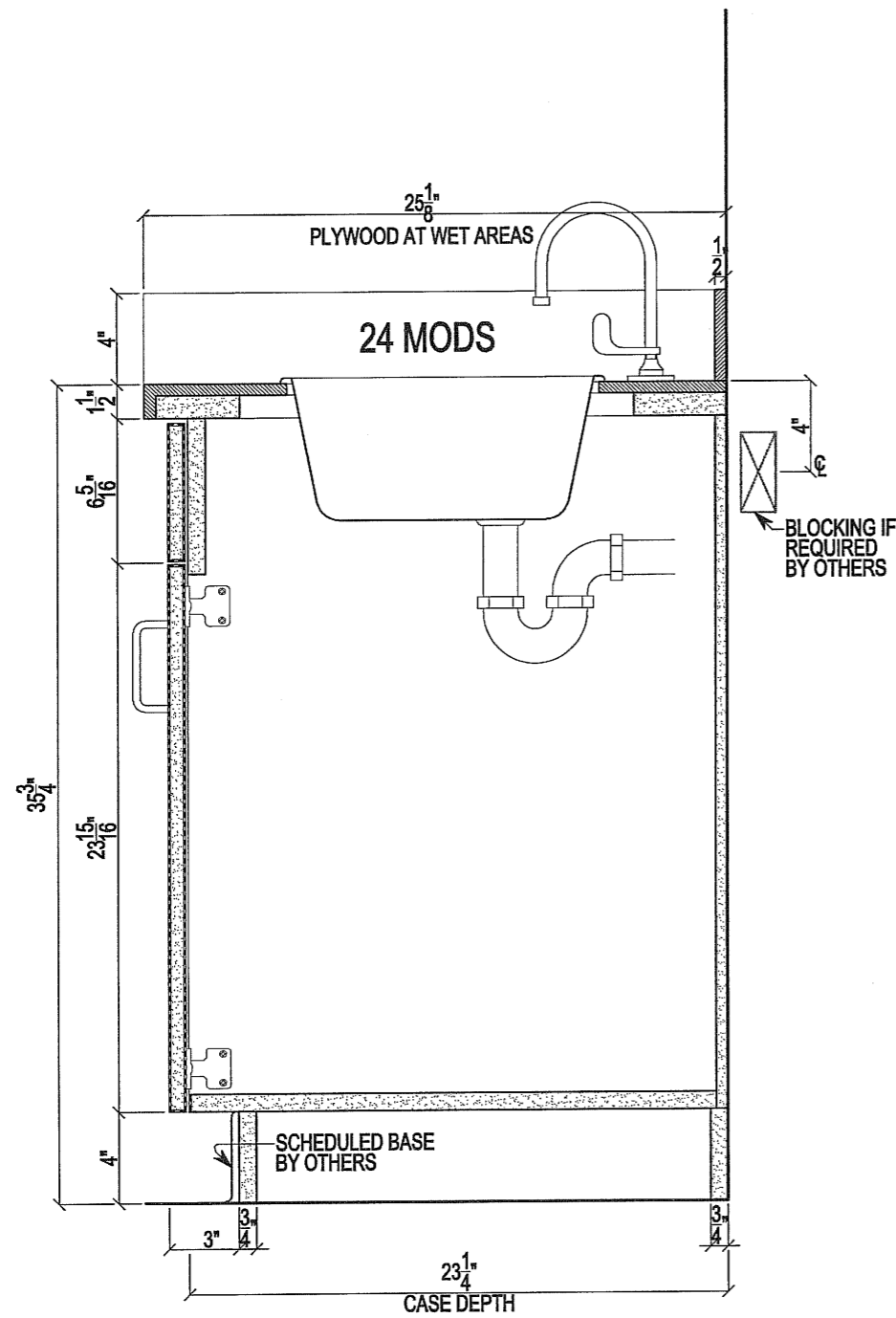


Montana State University  
**Cooley Lab Renovation**  
 Bozeman, Montana

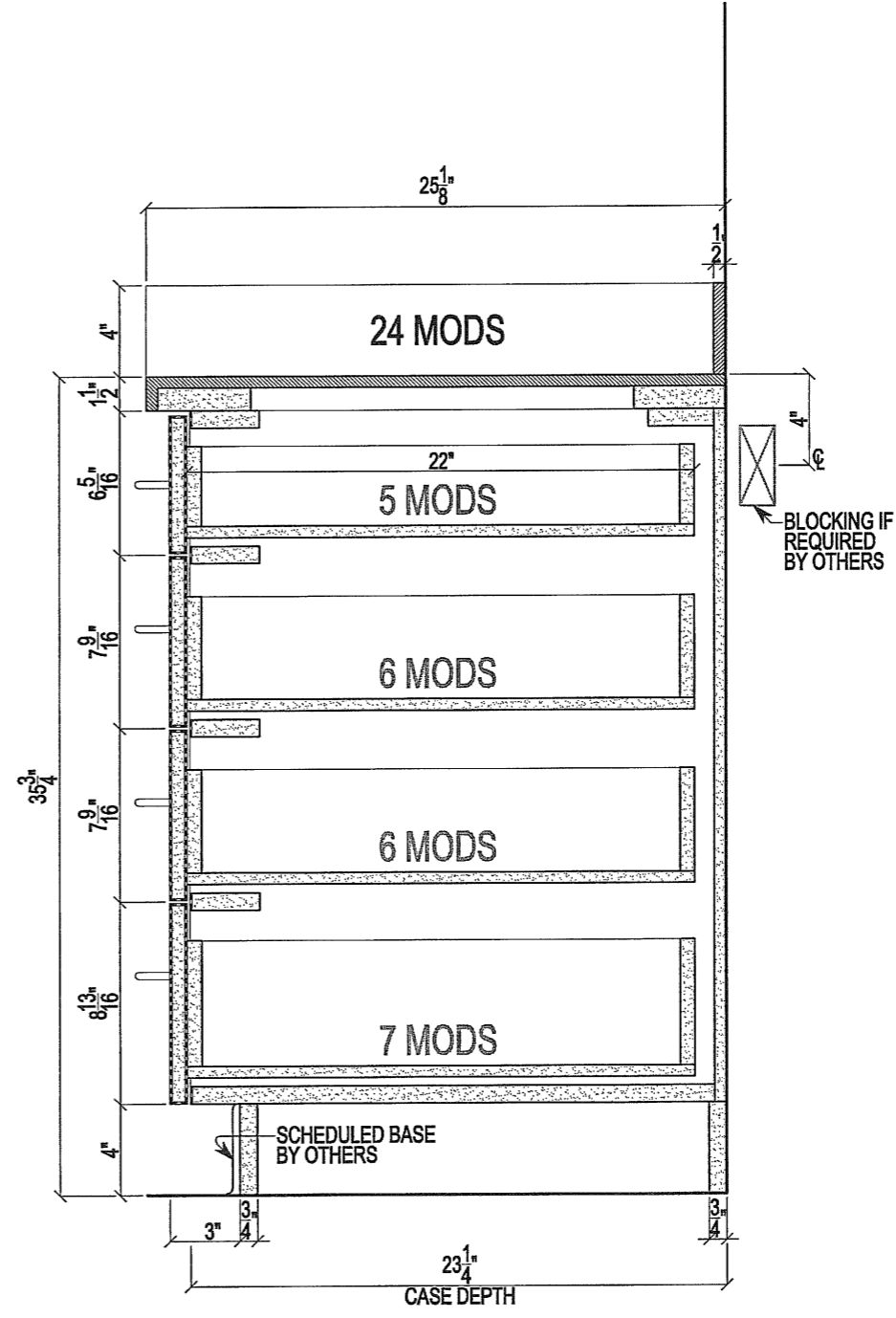
ORIGINAL ISSUE:	12-1-11
FIRST REVISION:	
SECOND REVISION:	
THIRD REVISION:	
ARCHITECT:	
ACCURATE CASEWORK:	
QUICK DRAW:	1184
DRAWN BY:	BAI

**D1**

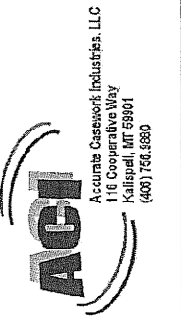




<b>1</b>	<b>BASE CABINET SECTION</b>	-
	COUNTER / SPLASH:	SOLID SURFACE
1 1/2" = 12"		
PLAN:	CABINET EXTERIORS:	PLASTIC LAMINATE - MAPLE
ELEV:		
SECT:	CLOSED INTERIORS:	MELAMINE



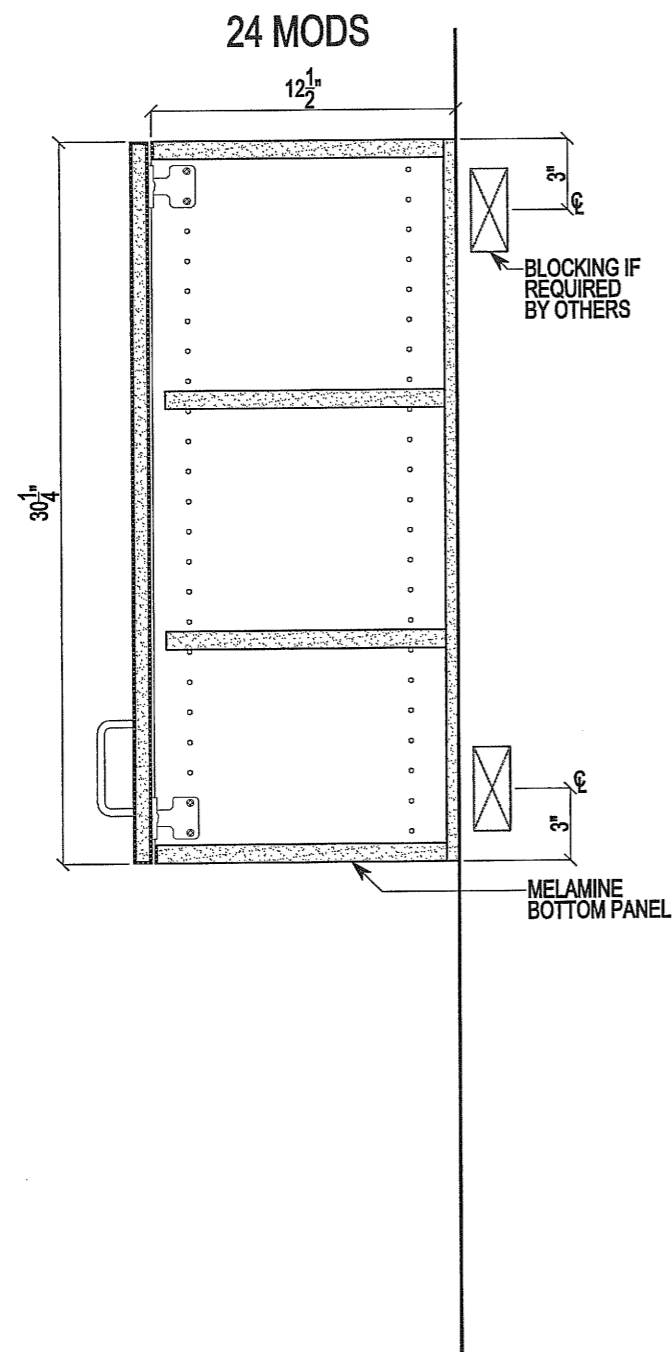
<b>2</b>	<b>BASE CABINET SECTION</b>	-
	COUNTER / SPLASH:	SOLID SURFACE
1 1/2" = 12"		
PLAN:	CABINET EXTERIORS:	PLASTIC LAMINATE - MAPLE
ELEV:		
SECT:	CLOSED INTERIORS:	MELAMINE



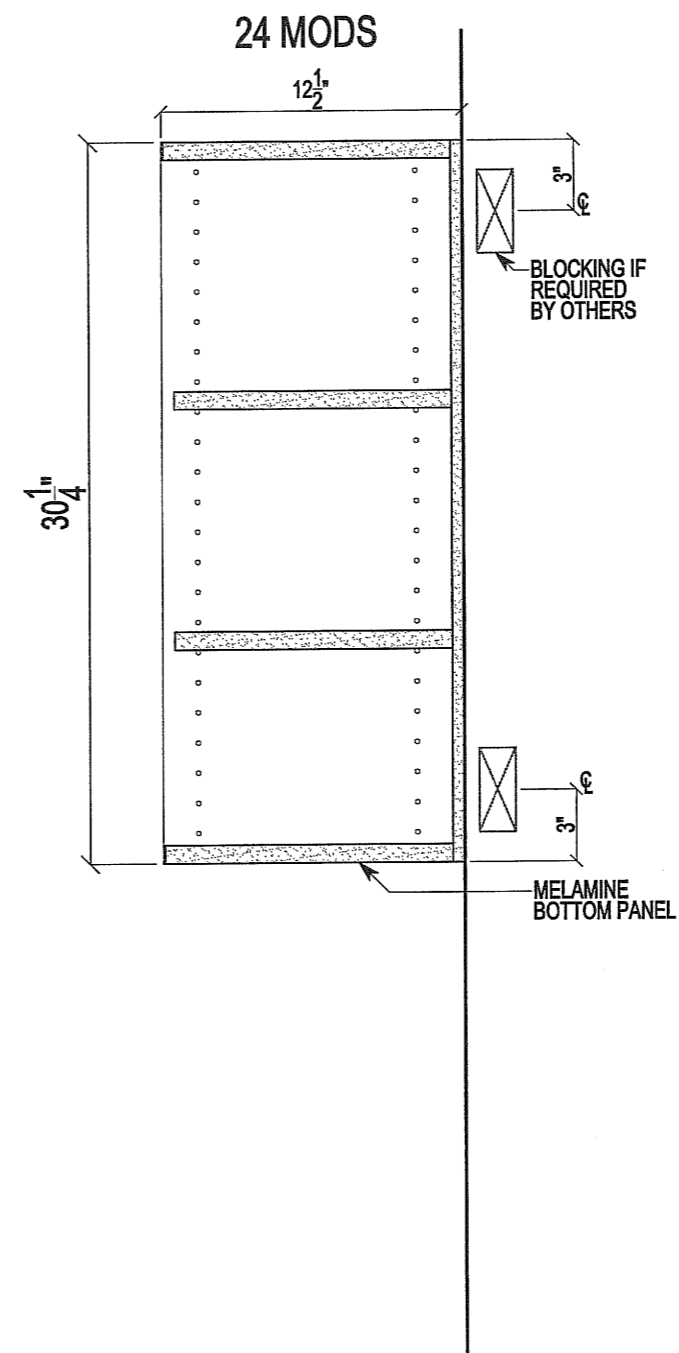
Montana State University  
**Cooley Lab Renovation**  
 Bozeman, Montana

ORIGINAL ISSUE:	12-1-11
FIRST REVISION:	
SECOND REVISION:	
THIRD REVISION:	
ARCHITECT:	
ACCURATE CASEWORK:	-
QUICK DRAW:	1184
DRAWN BY:	BAI

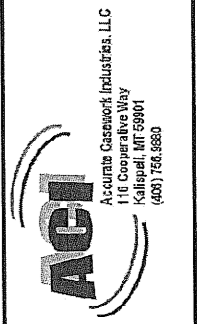
D2



<b>1</b>	<b>WALL CABINET SECTION -</b>	
	DOORS:	PLASTIC LAMINATE
PLAN:	1 1/2" = 12"	CABINET EXTERIORS: <del>PLASTIC LAMINATE</del> <b>MAPLE</b>
ELEV:	-	CLOSED INTERIORS: MELAMINE
SECT:	9/A7.0	



<b>2</b>	<b>WALL CABINET SECTION -</b>	
	DOORS:	PLASTIC LAMINATE
PLAN:	1 1/2" = 12"	CABINET EXTERIORS: PLASTIC LAMINATE
ELEV:	-	OPEN INTERIORS: <del>MELAMINE</del> <b>MAPLE</b>
SECT:	10/A7.0	



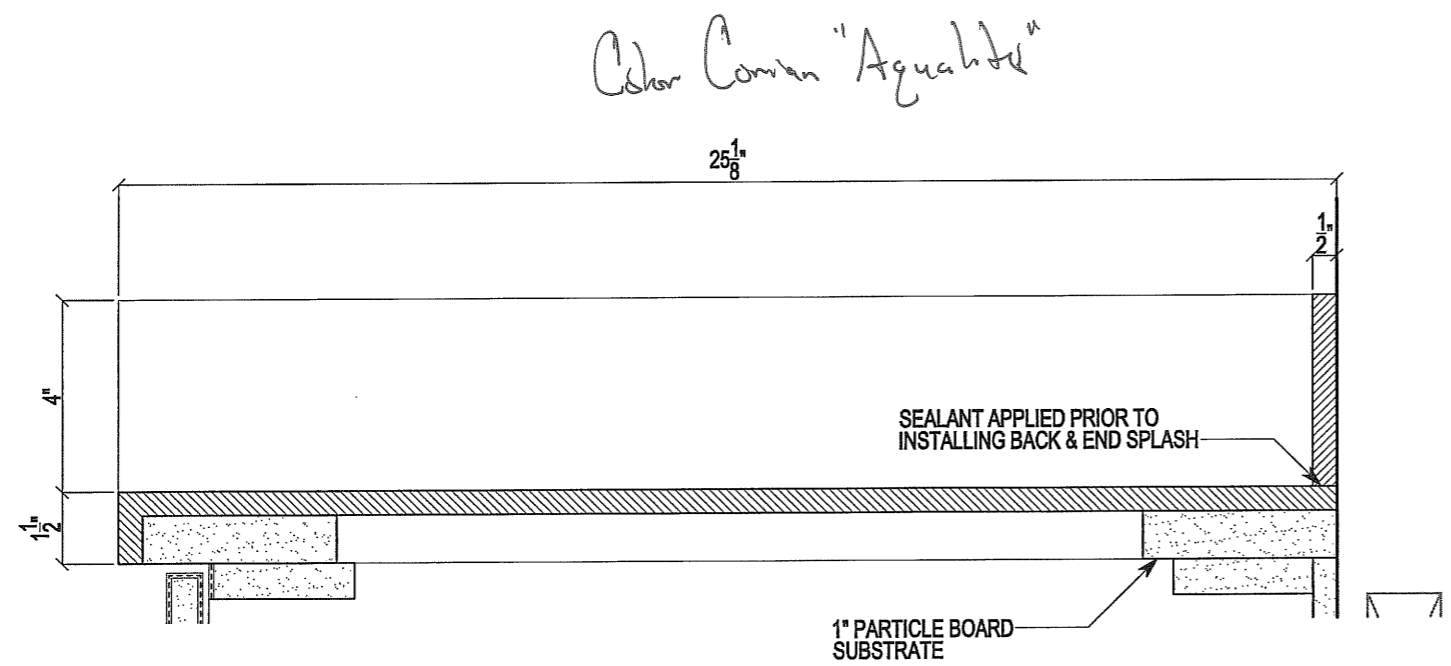
Montana State University  
**Cooley Lab Renovation**  
Bozeman, Montana

ORIGINAL ISSUE:	12-1-11
FIRST REVISION:	
SECOND REVISION:	
THIRD REVISION:	
ARCHITECT:	
ACCURATE CASEWORK:	-
QUICK DRAW:	1184
DRAWN BY:	BAI

**D3**

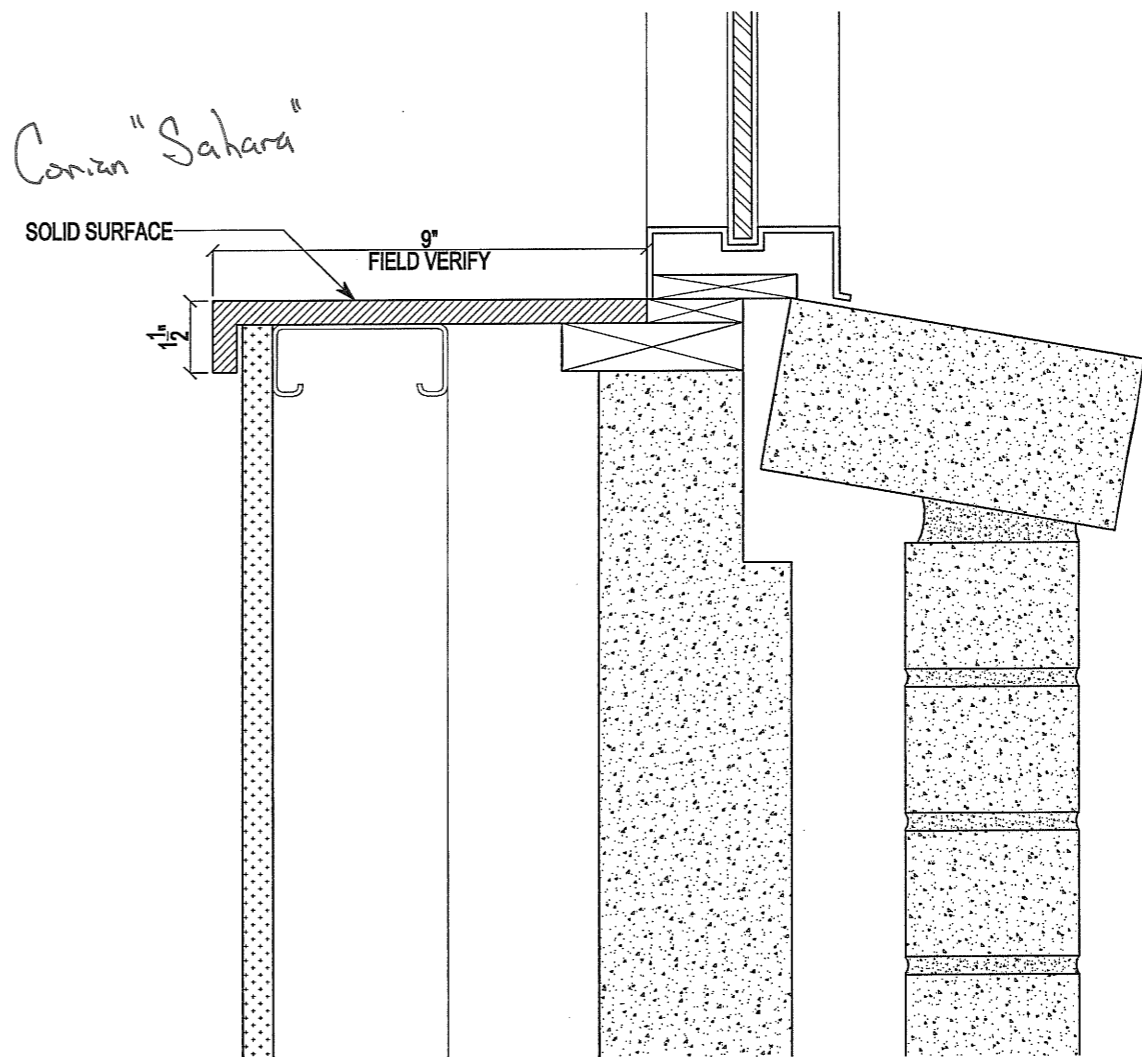
ORIGINAL ISSUE:	12-1-11
FIRST REVISION:	
SECOND REVISION:	
THIRD REVISION:	
ARCHITECT:	
ACCURATE CASEWORK:	-
QUICK DRAW:	1184
DRAWN BY:	BAI

79  
 68 TOTAL WINDOW SILLS  
 ON FIRST, SECOND, THIRD  
 & FOURTH FLOORS

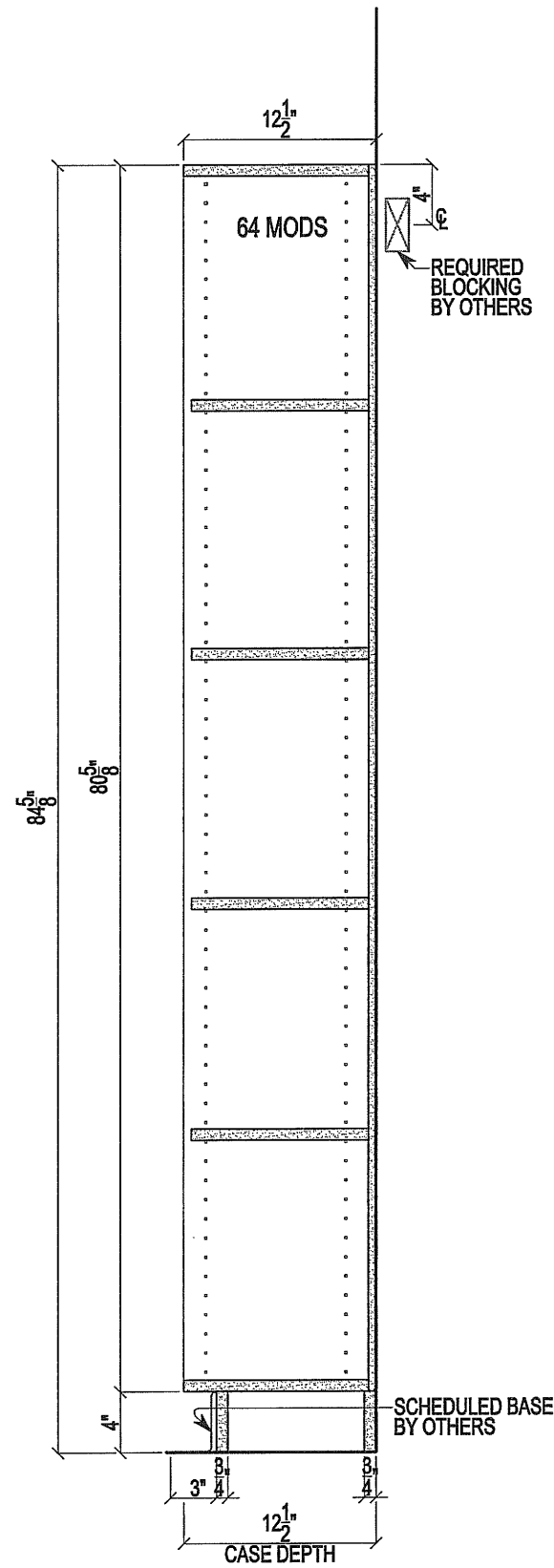


<b>1</b>	<b>COUNTER SECTION</b>	-
	COUNTER / SPLASH:	SOLID SURFACE
3" = 12"	CABINET EXTERIORS:	PLASTIC LAMINATE
PLAN: -	CLOSED INTERIORS:	MELAMINE
ELEV: -		
SECT: -		

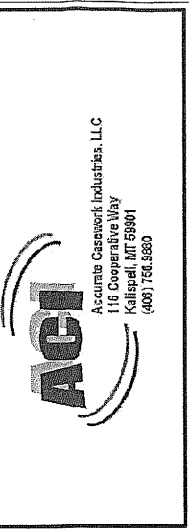
*Color Conran "Sahara"*



<b>2</b>	<b>WINDOW SILL</b>	-
	WINDOW SILLS:	SOLID SURFACE
3" = 12"		
PLAN: -		
ELEV: -		
SECT: -		



<b>1</b>	<b>TALL STORAGE SECTION</b> -	
1" = 12"	CABINET EXTERIORS:	PLASTIC LAMINATE
PLAN:	-	
ELEV:	-	CLOSED INTERIORS: MELAMINE
SECT:	-	



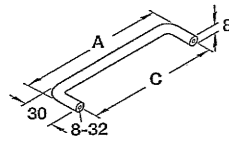
Montana State University  
**Cooley Lab Renovation**  
 Bozeman, Montana

ORIGINAL ISSUE:	12-1-11
FIRST REVISION:	
SECOND REVISION:	
THIRD REVISION:	
ARCHITECT:	
ACCURATE CASEWORK:	-
QUICK DRAW:	1184
DRAWN BY:	BAI

**D5**

# HÄFELE

Decorative



Steel, satin bronzed copper

A	C	Item No.	Price/pc.	MyHäfele Price/pc.
97	89	116.07.108		
104	96	116.07.118		
110	102	116.07.128		

Packing: 50 pcs.\*



Steel, black matt

A	C	Item No.	Price/pc.	MyHäfele Price/pc.
97	89	116.07.318		
104	96	116.07.329		
110	102	116.07.338		

Packing: 50 pcs.\*



Steel, matt nickel

A	C	Item No.	Price/pc.	MyHäfele Price/pc.
97	89	116.07.611		
104	96	116.07.621		
110	102	116.07.632		

Packing: 50 pcs.\*



Steel, satin chrome

A	C	Item No.	Price/pc.	MyHäfele Price/pc.
97	89	116.07.419		
104	96	116.07.429		
110	102	116.07.438		

Packing: 50 pcs.\*

Steel, brushed nickel

A	C	Item No.	Price/pc.	MyHäfele Price/pc.
97	89	116.07.619		
104	96	116.07.628		
110	102	116.07.639		

Packing: 50 pcs.\*



Steel, dark oil-rubbed bronze

A	C	Item No.	Price/pc.	MyHäfele Price/pc.
97	89	116.07.319		
104	96	116.07.321		
110	102	116.07.339		

Packing: 50 pcs.\*



Steel, matt chrome

A	C	Item No.	Price/pc.	MyHäfele Price/pc.
97	89	116.07.413		
104	96	116.07.421		
110	102	116.07.439		

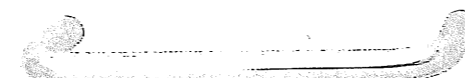
Packing: 50 pcs.\*



Steel, polished chrome

A	C	Item No.	Price/pc.	MyHäfele Price/pc.
97	89	116.07.219		
104	96	116.07.228		
110	102	116.07.238		

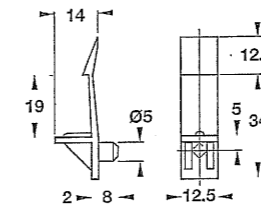
Packing: 50 pcs.\*



# HÄFELE

Connectors and Shelf Supports

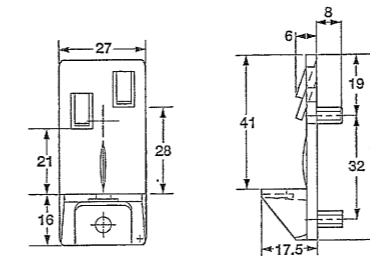
## Plastic Shelf Supports



**Shelf Support Ø 5 mm, with grooved plug and spring clip**  
 • For wood shelves 19 mm (3/4") thick  
 Material: plastic

Color	Item No.
white	282.17.736
beige	282.17.432

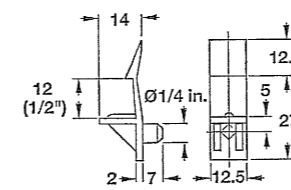
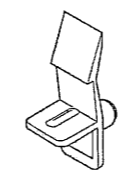
\*Packing: 5000 pcs.



**Shelf Support Ø 5 mm, heavy duty**  
 • Double pin Ø 5 mm for 32 mm system locks 3/4" or 1" shelves  
 Material: plastic

Color	Item No.
white	282.47.702
transparent	282.47.402

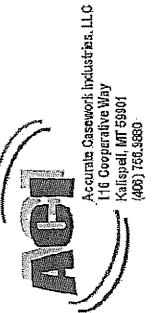
\*Packing: 1250 pcs.



**Shelf Support Ø 1/4", with grooved plug and spring clip**  
 • For wood shelves 12 mm (1/2") thick  
 Material: plastic

Color	Item No.
beige	282.17.469

\*Packing: 5000 pcs.



Montana State University  
**Cooley Lab Renovation**  
 Bozeman, Montana

ORIGINAL ISSUE:

12-1-11

FIRST REVISION:

SECOND REVISION:

THIRD REVISION:

ARCHITECT:

ACCURATE CASEWORK:

QUICK DRAW:

1184

DRAWN BY:

BAI

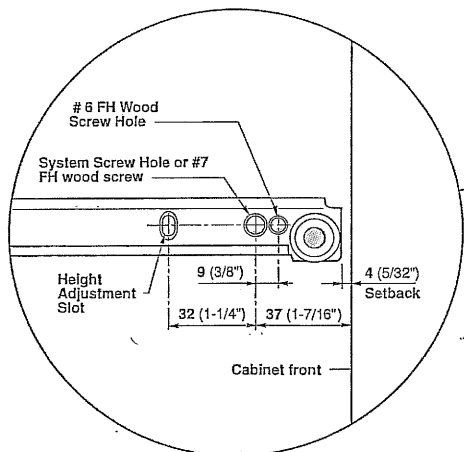
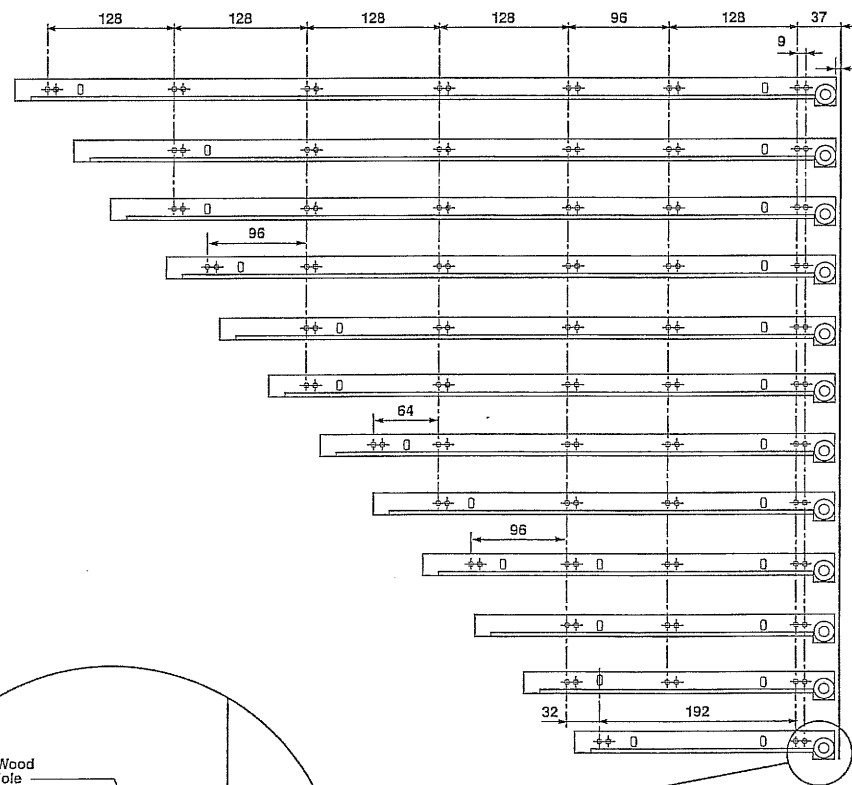
HI

# STANDARD 430E Series

## Bottom mounted full extension drawer runners

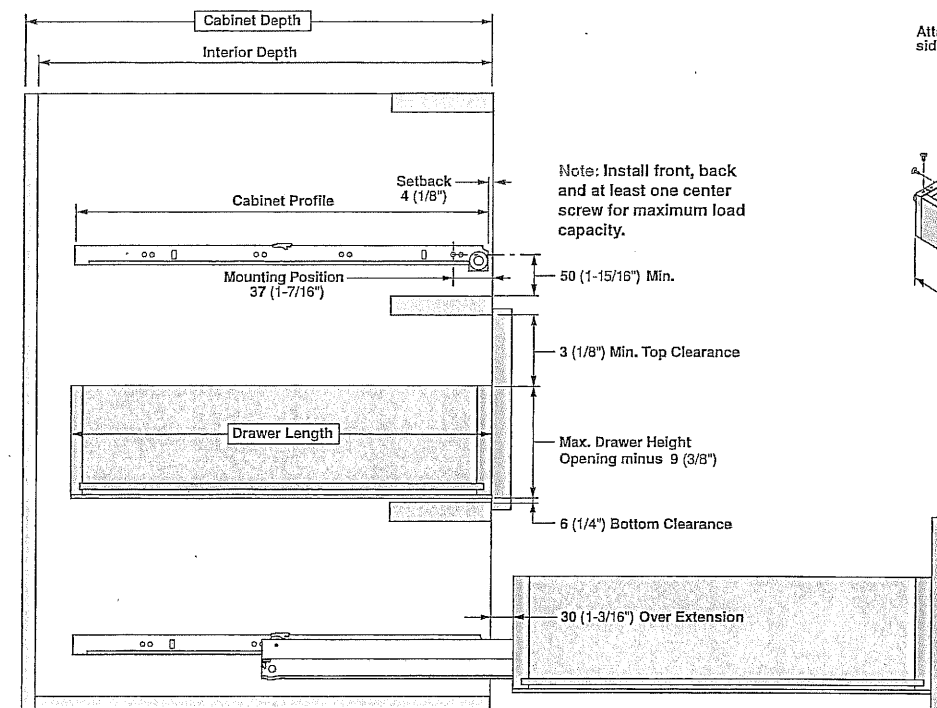
### Specifications

Runner	Nominal Length Inches	Minimum Interior Cabinet Depth	Suggested Drawer Length	Over Extension	Cabinet & Drawer Profile Length
430E8000	32"	803 (31 <sup>9</sup> / <sub>8</sub> " )	800 (31 <sup>1</sup> / <sub>2</sub> " )	30 (1- <sup>3</sup> / <sub>16</sub> " ) At suggested drawer length	800 (31 <sup>1</sup> / <sub>2</sub> " )
430E7500	30"	753 (29 <sup>5</sup> / <sub>8</sub> " )	750 (29 <sup>1</sup> / <sub>2</sub> " )		750 (29 <sup>1</sup> / <sub>2</sub> " )
430E7000	28"	703 (27 <sup>11</sup> / <sub>16</sub> " )	700 (27 <sup>9</sup> / <sub>16</sub> " )		700 (27 <sup>9</sup> / <sub>16</sub> " )
430E6500	26"	653 (25 <sup>3</sup> / <sub>4</sub> " )	650 (25 <sup>5</sup> / <sub>8</sub> " )		650 (25 <sup>5</sup> / <sub>8</sub> " )
430E6000	24"	603 (23 <sup>3</sup> / <sub>4</sub> " )	600 (23 <sup>5</sup> / <sub>8</sub> " )		600 (23 <sup>5</sup> / <sub>8</sub> " )
430E5500	22"	553 (21 <sup>13</sup> / <sub>16</sub> " )	550 (21 <sup>11</sup> / <sub>16</sub> " )		550 (21 <sup>11</sup> / <sub>16</sub> " )
430E5000	20"	503 (19 <sup>13</sup> / <sub>16</sub> " )	500 (19 <sup>11</sup> / <sub>16</sub> " )		500 (19 <sup>11</sup> / <sub>16</sub> " )
430E4500	18"	453 (17 <sup>7</sup> / <sub>8</sub> " )	450 (17 <sup>3</sup> / <sub>4</sub> " )		450 (17 <sup>3</sup> / <sub>4</sub> " )
430E4000	16"	403 (15 <sup>7</sup> / <sub>8</sub> " )	400 (15 <sup>3</sup> / <sub>4</sub> " )		400 (15 <sup>3</sup> / <sub>4</sub> " )
430E3500	14"	353 (13 <sup>7</sup> / <sub>8</sub> " )	350 (13 <sup>3</sup> / <sub>4</sub> " )		350 (13 <sup>3</sup> / <sub>4</sub> " )
430E3000	12"	303 (11 <sup>13</sup> / <sub>16</sub> " )	300 (11 <sup>11</sup> / <sub>16</sub> " )	300 (11 <sup>11</sup> / <sub>16</sub> " )	
430E2500	10"	253 (9 <sup>13</sup> / <sub>16</sub> " )	250 (9 <sup>11</sup> / <sub>16</sub> " )	250 (9 <sup>11</sup> / <sub>16</sub> " )	

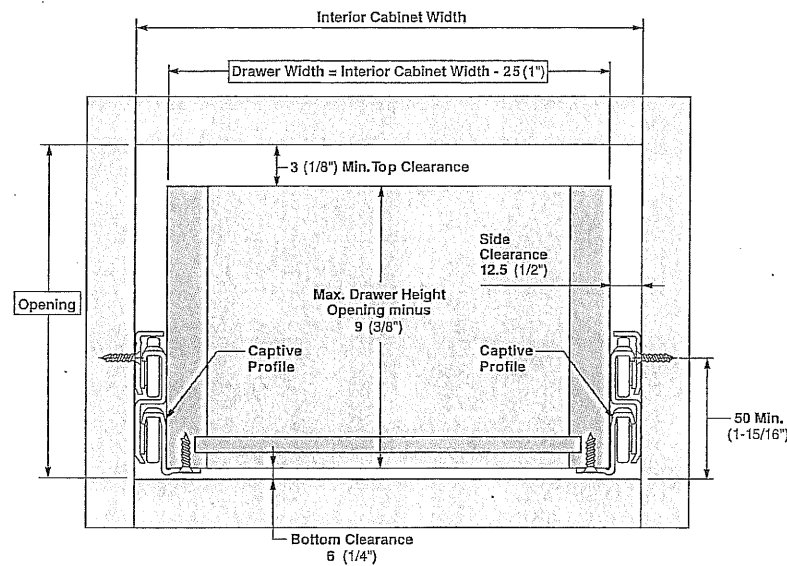
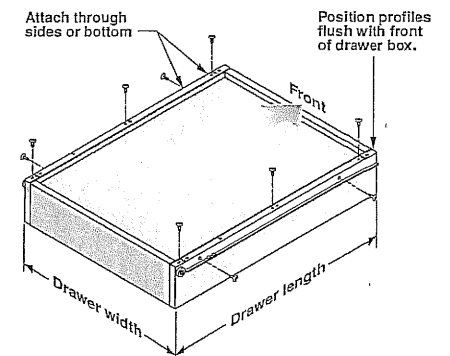


### Drawer and cabinet specifications

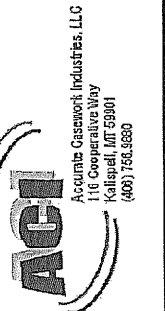
#### Panel Cabinet Installation



#### Drawer Profile Mounting



See page 10 for profile installation



Montana State University  
Cooley Lab Renovation  
Bozeman, Montana

ORIGINAL ISSUE:

12-1-11

FIRST REVISION:

SECOND REVISION:

THIRD REVISION:

ARCHITECT:

ACCURATE CASEWORK:

QUICK DRAW:

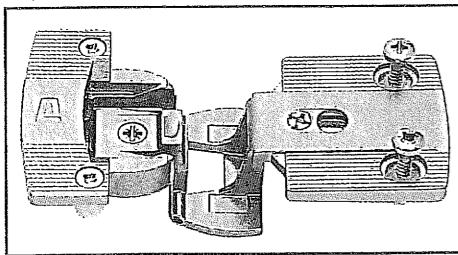
1184

DRAWN BY:

BAI

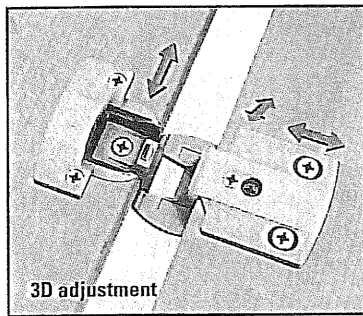
42

# Institutional Hinges

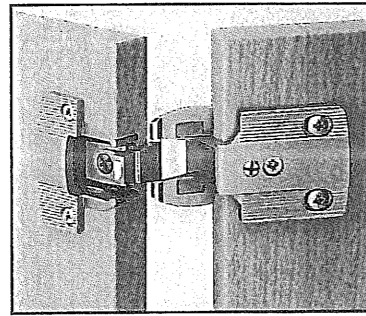


## Aximat 300 Single Pivot Hinge Series

- Sleek sophisticated design, only 5 mm (3/16") of knuckle is visible
- Hinge arm component available with pre-installed expanding dowels for 5 mm holes, or for screw attachment
- Hinge cup component available in press-fit or screw-mount options
- Arm and cup clip-together, no tools required
- For side panel thickness 19 mm (3/4")
- For door thicknesses up to 21 mm (13/16")
- Integrated catch keeps doors closed, no additional magnetic catches required
- For single cabinets and storage walls
- Available in Twin mounted version, 2 doors can be mounted on a single hinge on a single side panel



3D adjustment



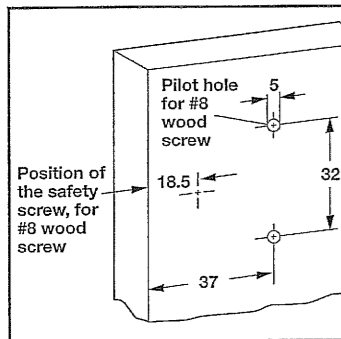
### Screw-mounted cup

Material: zinc  
 Color matt nickel 344.06.800  
 black 344.06.850  
 Packing: 50 pcs.

### Dowel-mounted cup, for 8 mm holes

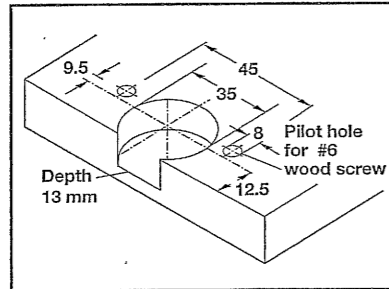
Material: zinc  
 Color matt nickel 344.06.810  
 black 344.06.860  
 Packing: 50 pcs.

Drilling pattern for side panel



Please note that #8 wood screws for hinge attachment are not included.

Drilling pattern for cup



### Arm with pre-mounted expanding dowels for 5 mm holes

Material: zinc  
 Color Overlay Opening angle Item No.  
 matt nickel Full 270° 344.06.900  
 black Full 270° 344.06.950  
 matt nickel Half 240° 344.06.901  
 matt nickel Twin 180° 344.06.902  
 Packing: 50 pcs.  
 Please note: Twin mounted version requires 2 cups

### Arm without screws

Material: zinc  
 Color Opening angle Item No.  
 matt nickel 270° 344.06.910  
 black 270° 344.06.960  
 Packing: 50 pcs.

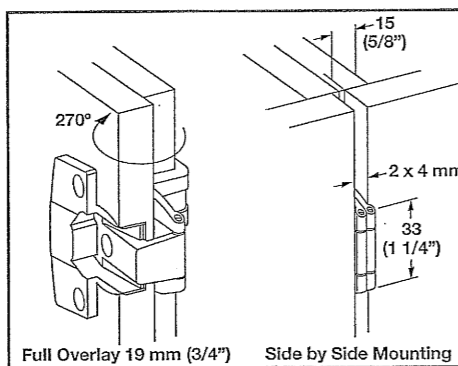
### Recommended number of Hinges

- Door widths up to 600 mm (23 5/8")
- Doors should not be wider than tall

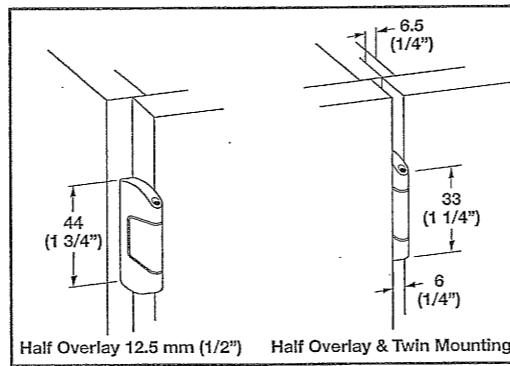
x = max. 100 mm (4")

mm	kg. (lbs.)
2500 (98 3/8")	25 (55)
2000 (78 3/4")	20 (44)
1500 (59 1/8")	15 (66)
1000 (39 3/8")	10 (22)
500 (19 3/4")	5 (11)

Door overlay 15 mm + knuckle 4 mm = 19 mm (3/4")



Door overlay 6.5 mm + knuckle 6 mm = 12.5 mm (1/2")



# EQ Credit 4.4: Low-Emitting Materials: Composite Wood & Agrifiber Products

## SkyBlend Particleboard Panels

### Overview:

Roseburg SkyBlend Particleboard is a specified green particleboard panel. It is EPP certified to be 100% recycled wood fiber particleboard and has No Urea Formaldehyde added during the manufacturing process. The panel is a multi-layered substrate produced using a blend of wood fibers and particles that deliver the most desirable properties of each species. It is sanded to an extremely smooth, tight, and grainless surface on both sides. The core has a controlled distribution pattern of particles that creates the perfect dimensionally stable panel. Roseburg SkyBlend is engineered to the highest quality standards providing customers with the most desired properties. SkyBlend particleboard is available as raw board or can be specified as a core for mixed loads of Roseburg Duramine Melamine Panels, Hardwood Panels, Durashelf Melamine Shelving, Pre-Finished Light (Low) Basis Wt. Paper Overlaid Panels, Pre-Finished Vinyl Overlaid Panels, Pre-Finished UV Clear-Coated Panels and Pre-Finished Painted Panels. Available in industrial grade only.

### Specifications:

Density	47 - 50 lbs.
Length & Width Tolerances	+/- 0.080"
Thickness Tolerances:	
Panel Avg. from Specified	+/- 0.008"
Var. from Panel Average	+/- 0.004"
MOR	2103 psi
MOE	326,300 psi

IB	65 psi
Hardness	500 lbs.
Face Screw Holding	225 lbs.
Edge Screw Holding	202 lbs.
LE max. avg.	% 0.35

- Typical results of tests conducted using procedures outlined in ASTM D-1037.
- Sanded to 100 grit.
- SkyBlend Industrial Particleboard meets or exceeds the requirements of ANSI-1999 A208.1 Grade M2.

### AVAILABLE THICKNESSES, SIZES and UNIT PIECE COUNT

Dillard OR and Missoula MT

1/4"	49 x 97	100	11/16"	49 x 97	46
3/8"	49 x 97	80	3/4"	49 x 97, 61 x 97, 61 x 121	42
1/2"	49 x 97	64	1"	49 x 97	32
5/8"	49 x 97	50	1-1/8"	49 x 97, 61 x 97, 61 x 121	30

Southern Plants

1/4"	49 x 97	100	5/8"	49 x 97	46
1/2"	49 x 97	50	5/8"	61 x 97, 61 x 109	40
1/2"	61 x 97	60	3/4"	49 x 97	38
1/2"	61 x 109	48	3/4"	61 x 97, 61 x 109	32

- Custom sizes may be available subject to minimum order quantities and press utilization.
- 1/4" and 3/8" not available in FSC Certified.

### LEED Credits:

LEED CATEGORY/CREDIT	INTENT	REQUIREMENTS	POSSIBLE POINTS
Materials and Resources MR Credit 4.1 Recycled Content: 10% (post+ 1/2 pre-consumer)	Increases the use of products that incorporate recycled content material	Sum of recycled content constitutes at least 10% of materials in the project	1 point
Materials and Resources MR Credit 4.2 Recycled Content: 20% (post+ 1/2 pre-consumer)	Increases the use of products that incorporate recycled content material	Sum of recycled content constitutes at least 20% of materials in the project	1 point (in addition to MR credit 4.1)
Indoor Environmental Quality EQ Credit 4.4: Low-Emitting Materials	Improves indoor air quality	Wood products used shall contain no added urea-formaldehyde resins	1 point
Materials and Resources MR 5.1 Regional Materials: 10% Extracted, Processed & Manufactured Regionally	Increases the use of materials that are extracted and manufactured within the project region	A min. of 10% of the combined value of building materials or products must be extracted, harvested, or recovered, as well as manufactured within 500 miles of the project	1 point
Materials and Resources MR 5.2 Regional Materials: 20% Extracted, Processed & Manufactured Regionally	Increases the use of materials that are extracted and manufactured within the project region	A min. of 20% of the combined value of building materials or products must be extracted, harvested, or recovered, as well as manufactured within 500 miles of the project	1 point (in addition to MR credit 5.1)
Materials and Resources MR Credit 7.0: Certified Wood FSC - Forest Stewardship Council NOTE: FSC Certified SkyBlend only	Encourage environmentally responsible forest management	Use a minimum of 50% wood based materials and products, which are certified in accordance with the Forest Stewardship Council's (FSC) Principles and Criteria, for wood building components	1 point

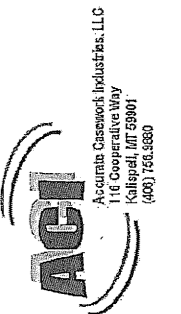
### Key Advantages:

- FSC Certified SkyBlend now available.
- Core is tinted blue, making the product readily identifiable in the field.
- No Added Urea Formaldehyde (NAUF).
- Can contribute to achieving LEED credits.
- Made from 100% recycled fiber content (fiber basis).
- EPP - Environmentally Preferable Product.
- Meet or exceed ANSI standard A208.1-1999.
- Designed for laminating,
- High-quality smooth surface.
- Tight machinable edges.
- Excellent dimensional stability.

### Manufacturing Locations:

	SkyBlend Particleboard	SkyBlend FSC Particleboard
Dillard, OR	X	X
Missoula, MT	X	-
Southern Plants	X	-

ROSEBURG  
 www.Roseburg.com



Montana State University  
 Cooley Lab Renovation  
 Bozeman, Montana

ORIGINAL ISSUE:	12-1-11
FIRST REVISION:	
SECOND REVISION:	
THIRD REVISION:	
ARCHITECT:	
ACCURATE CASEWORK:	
QUICK DRAW:	1184
DRAWN BY:	BAI

H3