

REQUEST FOR PROPOSAL

Project Title: Cooley Laboratory Renovation
Location: Montana State University

PPA No.: 10-0023
RFP No.: 18
Date: 12/09/11

To: Dick Anderson Construction
4498 Jackrabbit Lane
Bozeman, MT 59718

Attention: Platisha

From: Cecilia Vaniman, Project Manager
Cooley Lab Renovation
Montana State University

Attention: _____

In order to expedite the Work and avoid or minimize delays in the Work the following proposal is requested. Please return a response by: 12/19/11 Date Sent: 12/09/11
Date Received: _____

RFP Building Directory Revisions

Reference Drawings: A9.10 Details 1 - 2 - 3 and 4

Reference Specifications: 10431

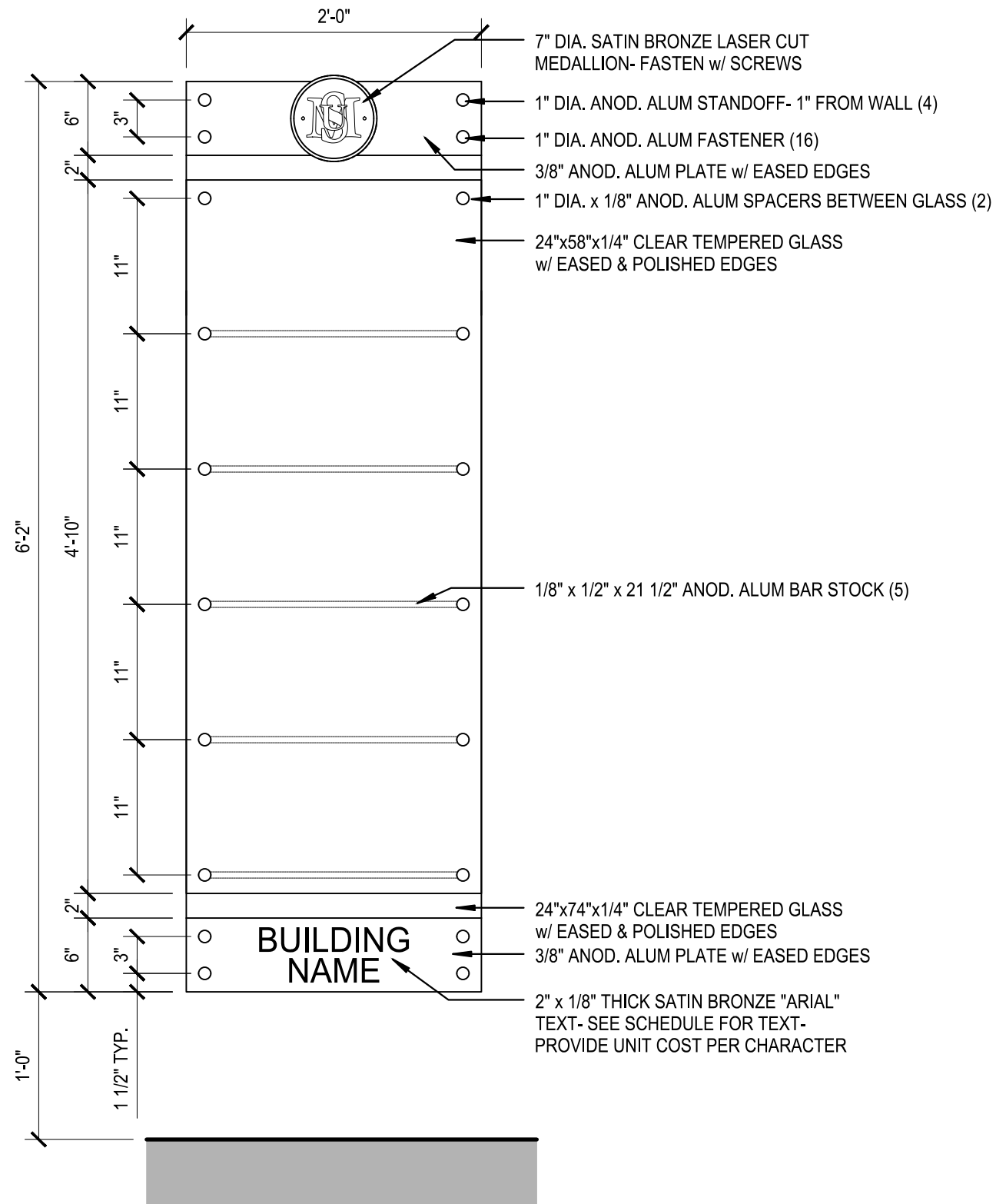
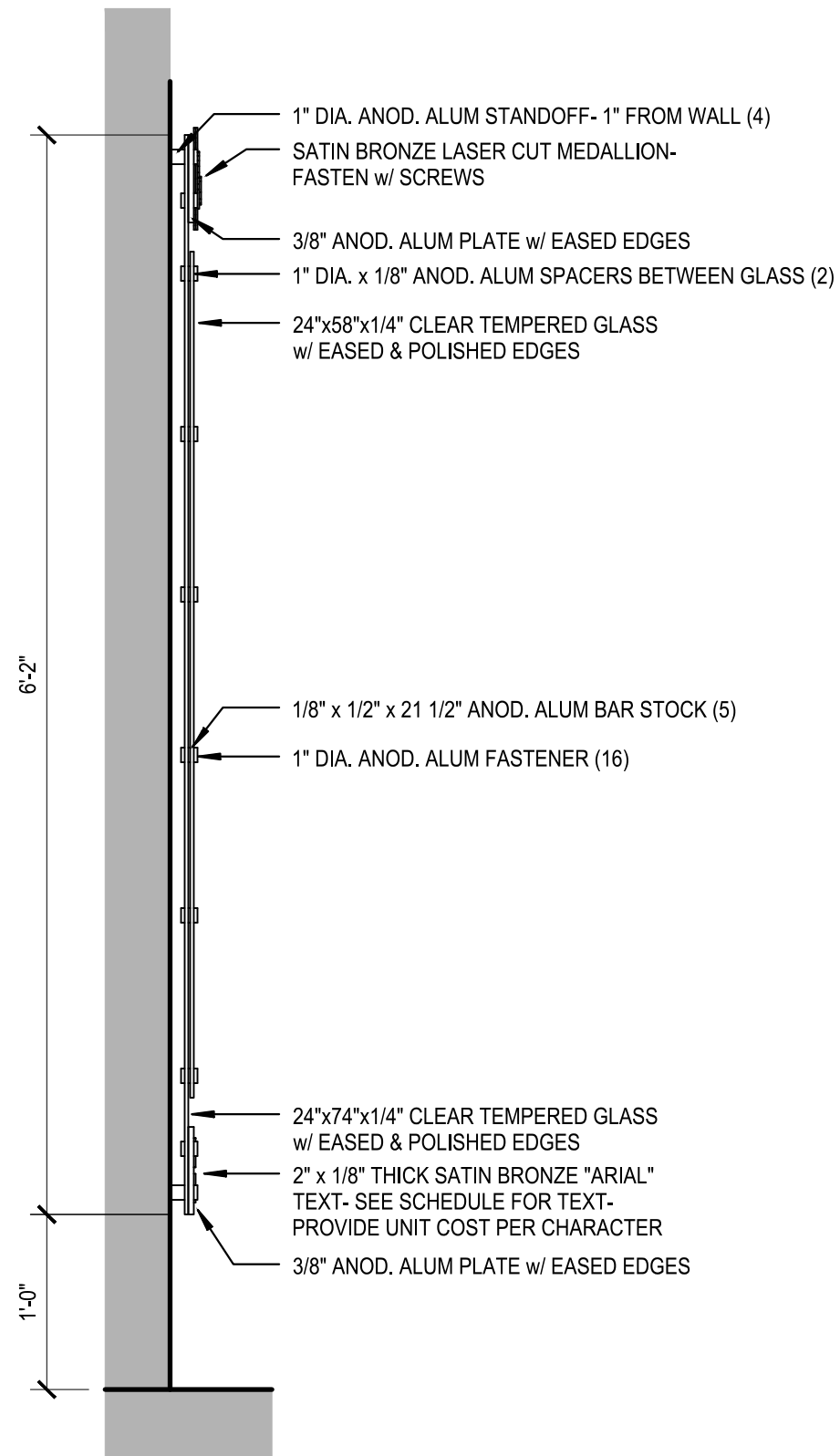
Revise Building Directory per the attached drawings.

Attachment: Building Directory Signage sheets 1 & 2

Floor Plan Locations ; Basement - 1st Floor - 2nd Floor - 3rd Floor and 4th Floor

This RFP is for pricing purposes only. The contractor shall not proceed with the scope of work described within until pricing is approved by the owner in writing.

Distribution: Owner Architect Engineer
 Agency Contractor Other



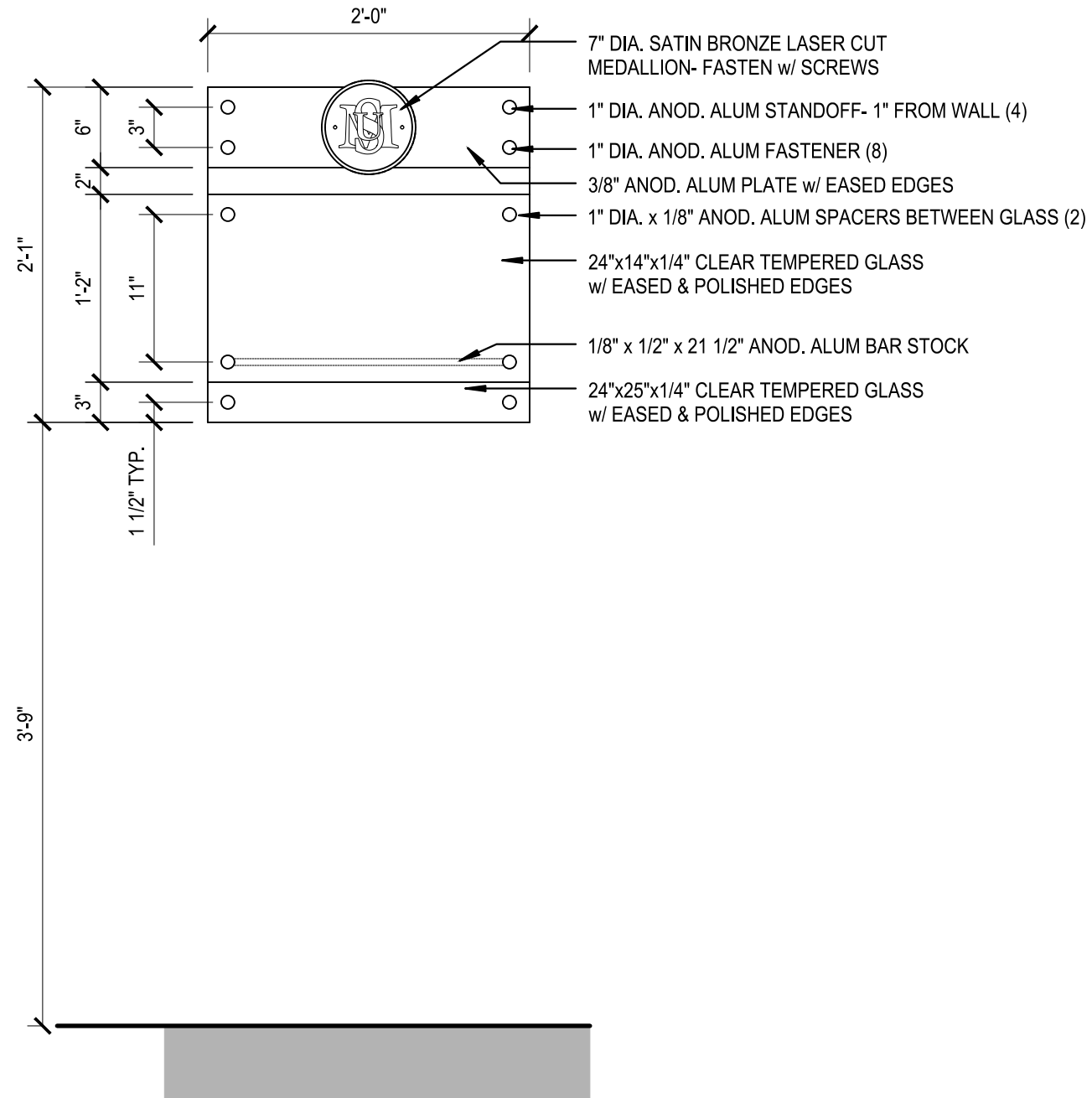
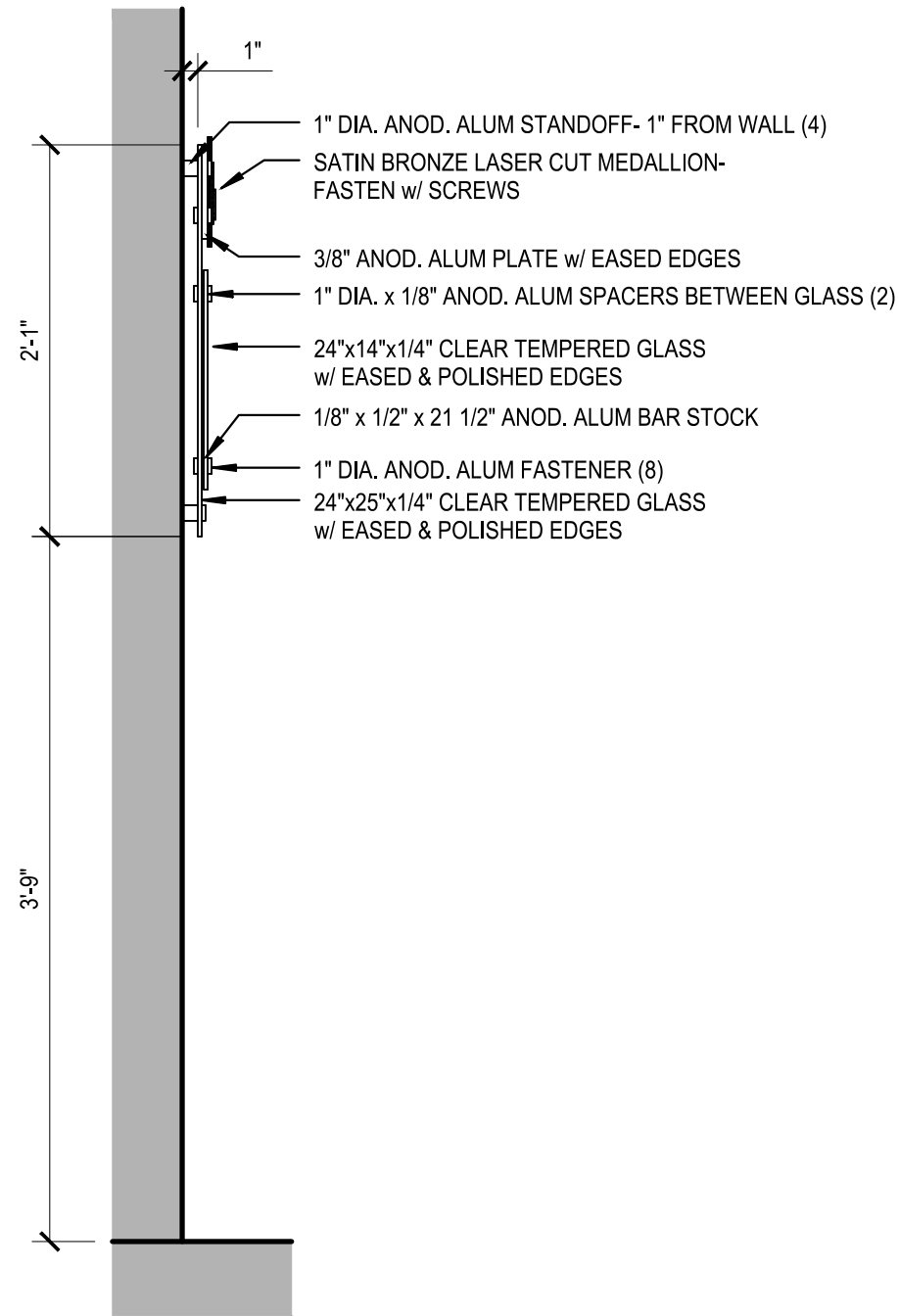
1 CAMPUS BUILDING DIRECTORY SIGNAGE - FIVE FLOORS
 SCALE: 1" = 1'

DRAWN BY: GAG		
REVIEWED BY:		
REV.	DESCRIPTION	DATE

PPA#11-0154

SHEET
A5.5

DATE
 11-22-11



1 CAMPUS BUILDING DIRECTORY SIGNAGE - NON ENTRY FLOOR
 SCALE: 1" = 1'

DRAWN BY: GAG

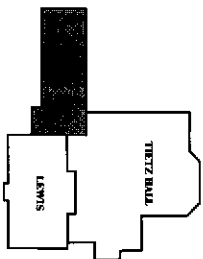
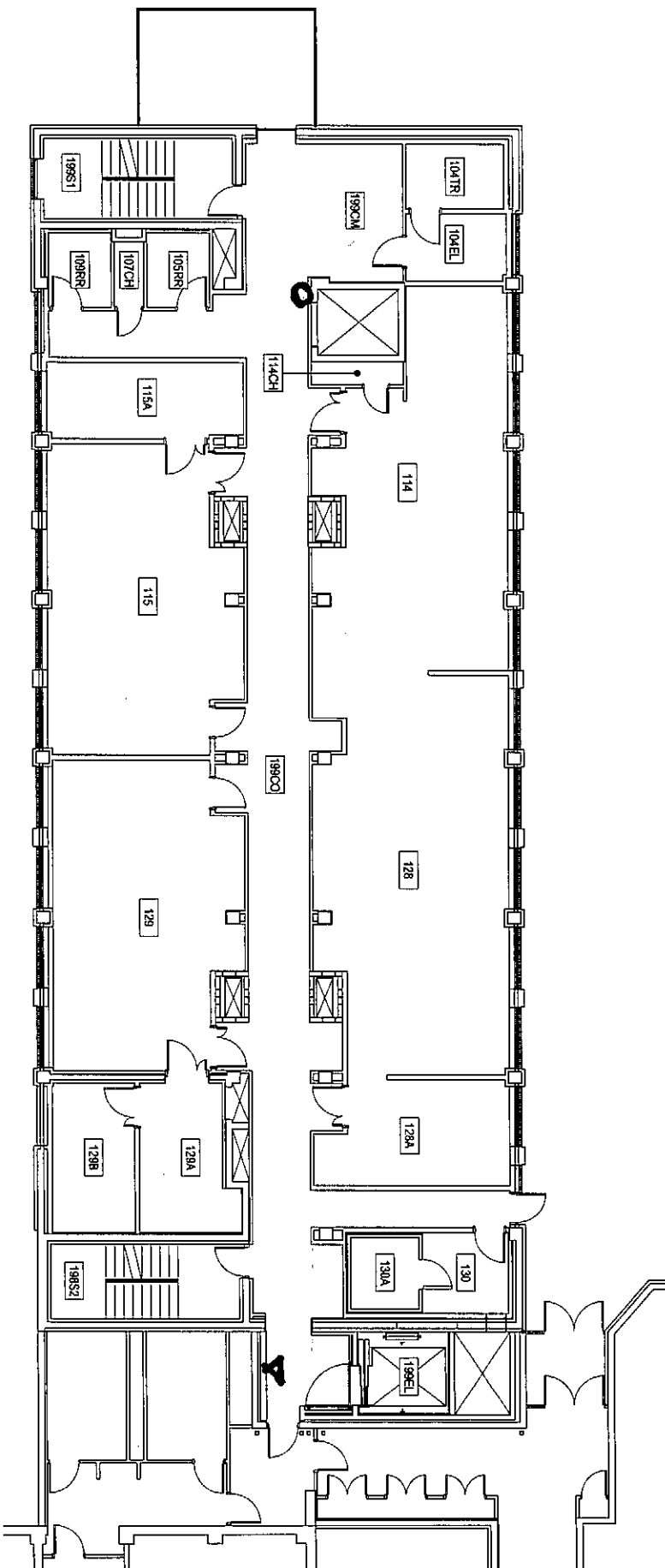
REVIEWED BY:

REV.	DESCRIPTION	DATE

PPA#11-0154

SHEET
A5.10

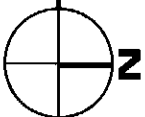
DATE
 11-22-11



SCALE: 1/16" = 1'

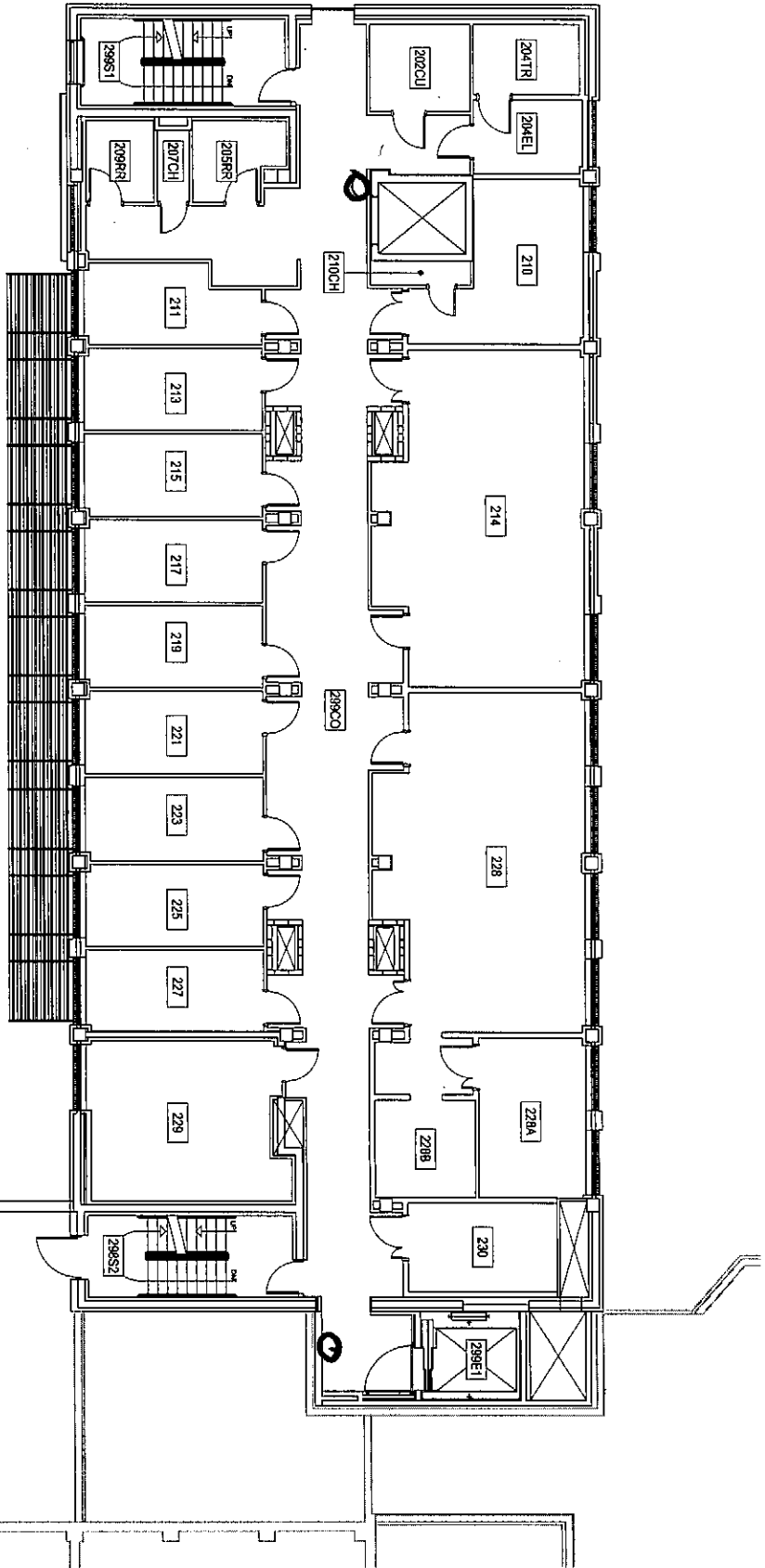
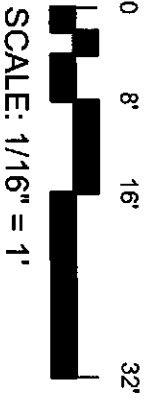
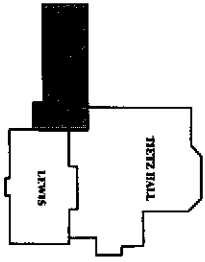


FIRST LEVEL
COOLEY LABORATORY



MONTANA STATE UNIVERSITY
 FACILITIES PLANNING,
 DESIGN & CONSTRUCTION
 BOZEMAN, MONTANA
 PHONE: 406/941-7331 FAX: 406/941-6572

INDEX #	23
BUILDING #	118



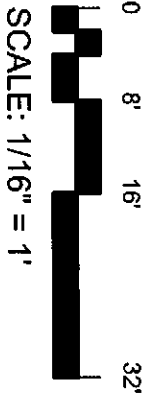
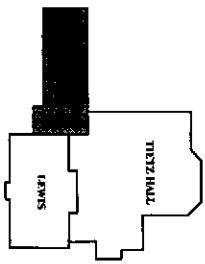
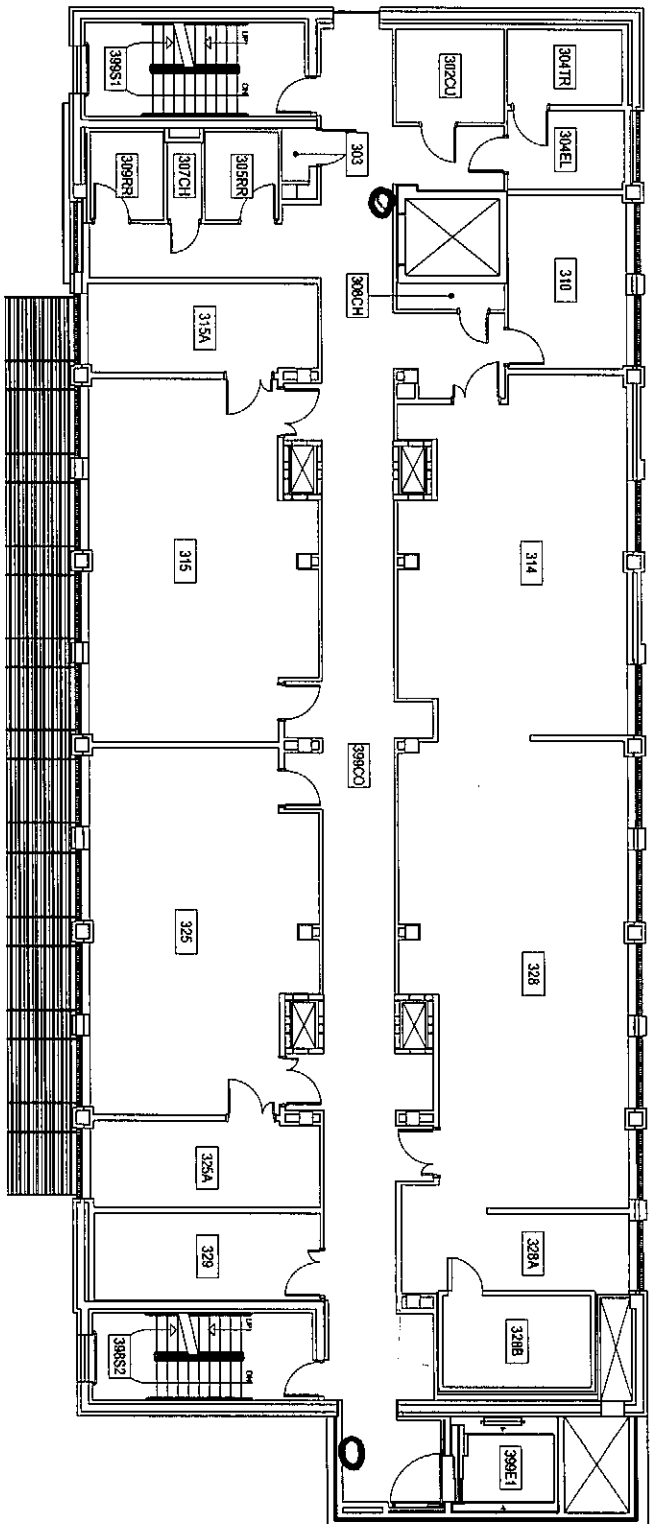
1

SECOND LEVEL
 COOLEY LABORATORY



MONTANA
 STATE UNIVERSITY
 FACILITIES PLANNING,
 DESIGN & CONSTRUCTION
 BOZEMAN, MONTANA
 PHONE: (406)541-1131 FAX: (406)541-6572

INDEX #	23
BUILDING #	118



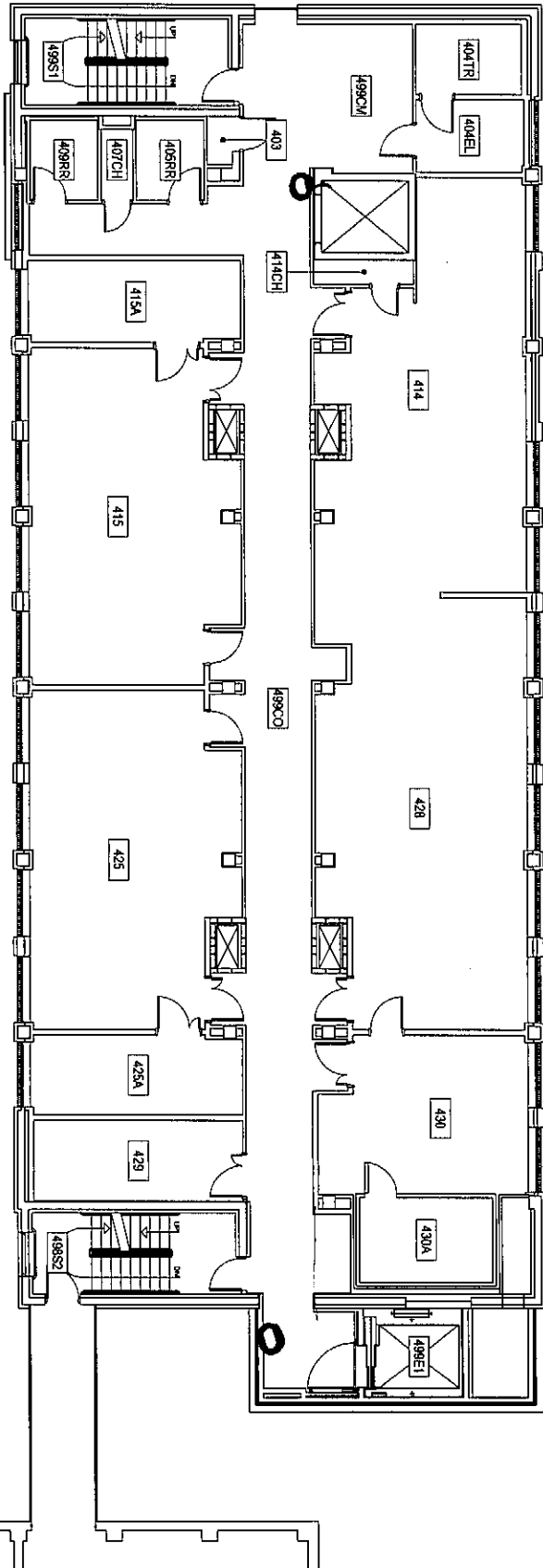
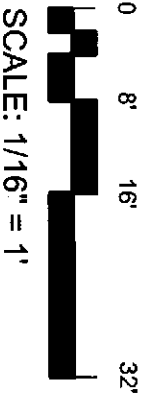
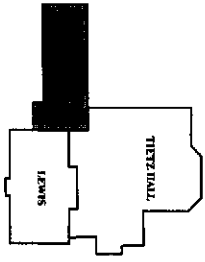
1

THIRD LEVEL
COOLEY LABORATORY

N

MONTANA
 STATE UNIVERSITY
 FACILITIES PLANNING,
 DESIGN & CONSTRUCTION
 BOZEMAN, MONTANA
 PHONE: 406/994-4131 FAX: 406/994-4572

INDEX #	23
BUILDING #	118



1

FOURTH LEVEL

COOLEY LABORATORY

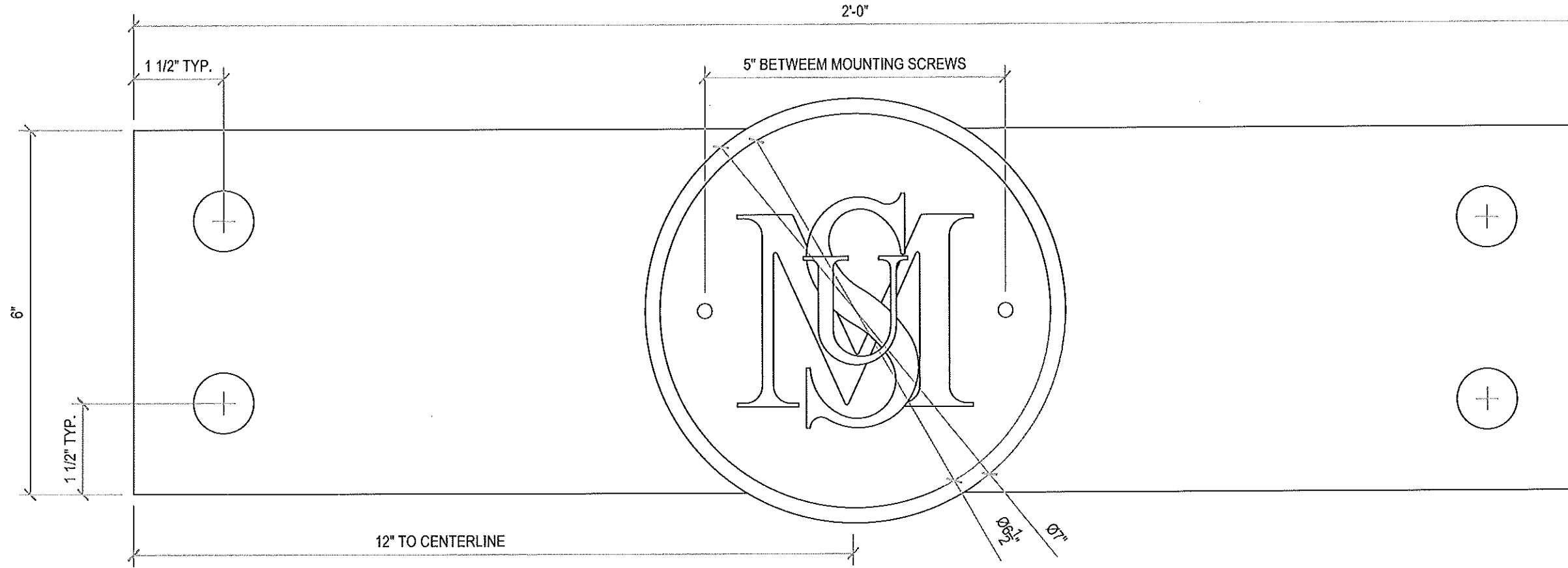
N

MONTANA
 STATE UNIVERSITY
 FACILITIES PLANNING,
 DESIGN & CONSTRUCTION
 BOZEMAN, MONTANA
 PHONE: 406/994-6711 FAX: 406/994-6772

INDEX #	23
BUILDING #	118

MS U COOLEY LAB - RFP 18 S SUPPLEMENTAL INFORMATION

Sheet 1 of 3



1 CAMPUS BUILDING DIRECTORY SIGNAGE - MEDALLION
SCALE: 1/2" = 1"

P:\c:\24_2011_225\pm - Building Information Signage Standard.dwg
 C:\Users\granger\AppData\LocalTemp\AcPublish_2020\



MONTANA STATE UNIVERSITY
BUILDING INFORMATION SIGNAGE

FACILITIES PLANNING,
DESIGN & CONSTRUCTION
MONTANA STATE UNIVERSITY
BOZEMAN, MONTANA
PHONE: 406.994.4131 FAX: 406.994.6572

DRAWN BY: GAD		
REVIEWED BY:		
REV.	DESCRIPTION	DATE

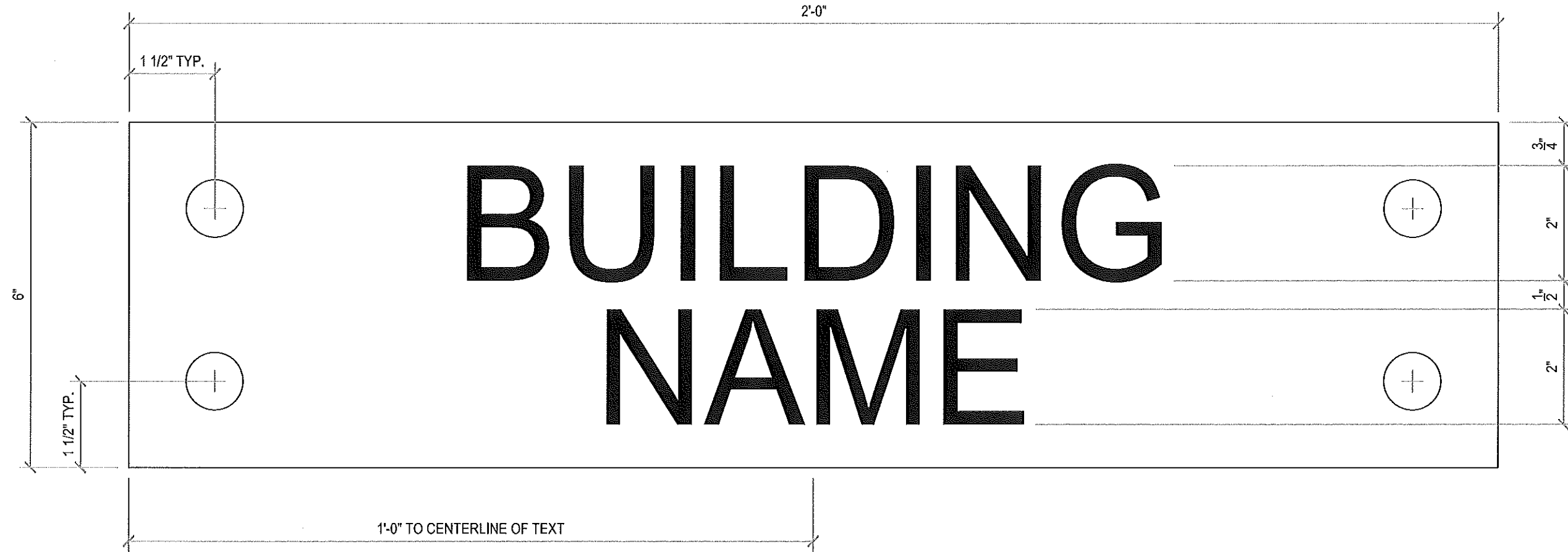
PPA#11-0154

SHEET
A5.11

DATE
11-22-11

MS U COOLEY LAB - RFP 18 S UPPLEMENTAL INFORMATION

Page 2 of 3



Dec 25, 2011 - 2:53pm - Building Information Signage Standard.dwg
C:\Users\jgarnett\AppData\Local\Temp\AcPublish_2320

1 CAMPUS BUILDING DIRECTORY SIGNAGE - BUILDING NAME
SCALE: 1/2" = 1"



MONTANA STATE UNIVERSITY
BUILDING INFORMATION SIGNAGE

FACILITIES PLANNING,
DESIGN & CONSTRUCTION
MONTANA STATE UNIVERSITY
BOZEMAN, MONTANA
PHONE: 406.994.4131 FAX: 406.994.6572

DRAWN BY: GAG

REVIEWED BY:

REV	DESCRIPTION	DATE

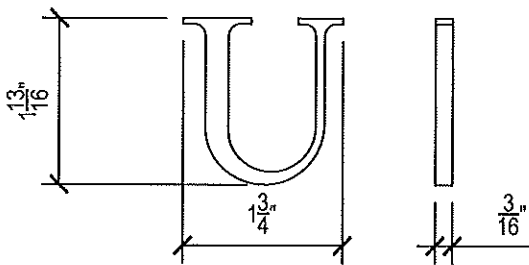
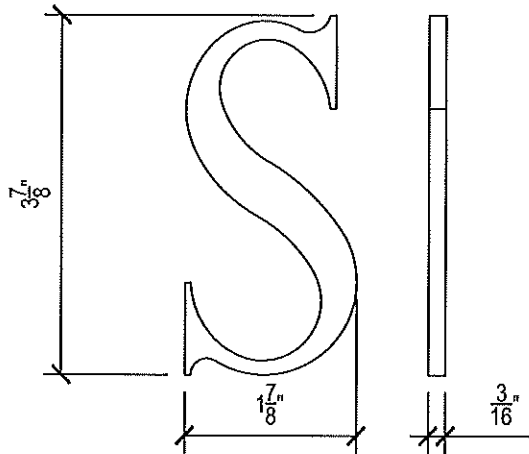
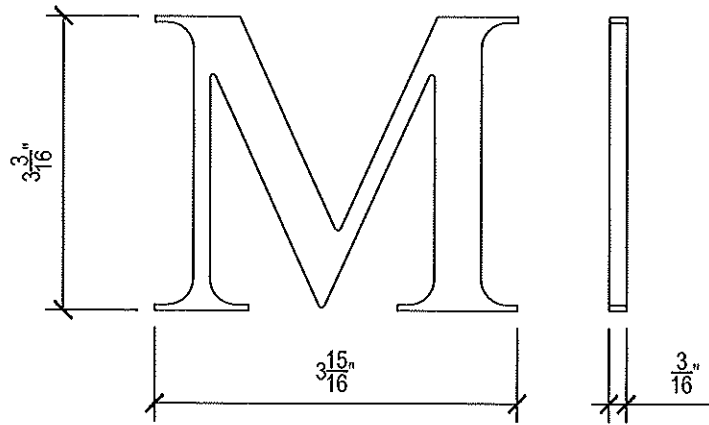
PPA#11-0154

SHEET
A5.12

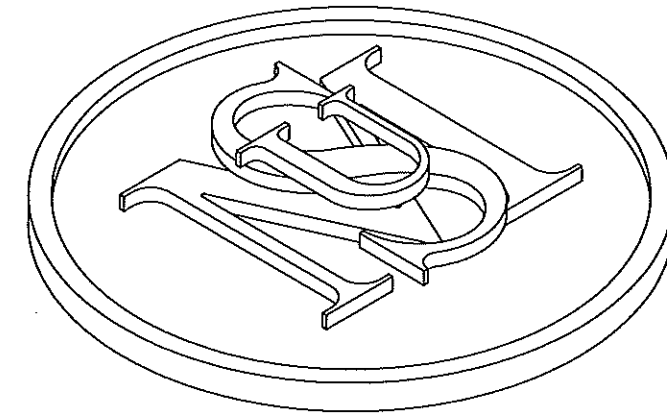
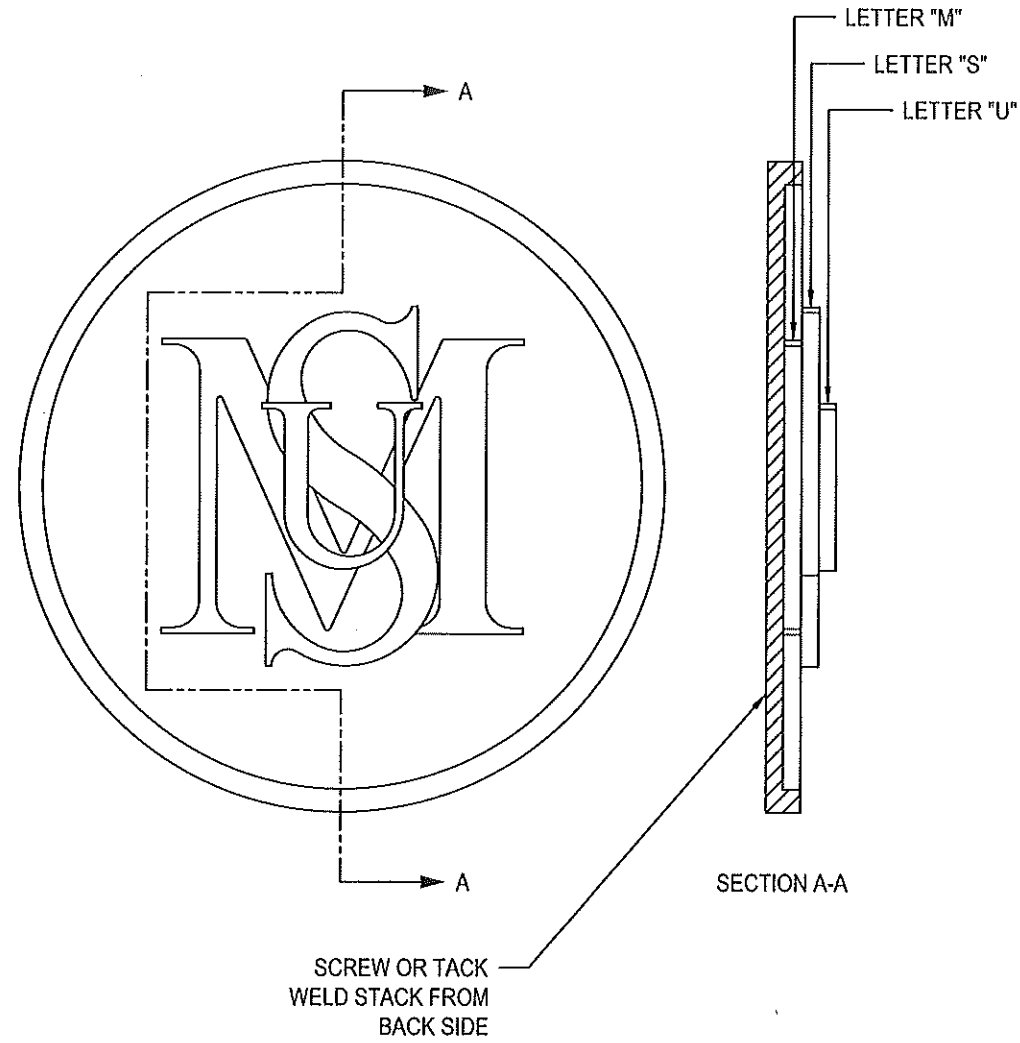
DATE
11-22-11

MS U COOLEY LAB - RFP 18 S SUPPLEMENTAL INFORMATION

Page 3 of 3



NOTE: AUTOCAD FILE OF "M", "S" & "U" LETTERS PROVIDED UPON REQUEST



ISOMETRIC VIEW

Dec 26, 2011 - 2:35pm - Building Informational Signage Standard.dwg
C:\Users\perry\Documents\perry\temp\ch\pub\sh_2820\

1 CAMPUS BUILDING DIRECTORY SIGNAGE - MEDALLION DETAILS
SCALE: 1/2" = 1"



MONTANA STATE UNIVERSITY
BUILDING INFORMATIONAL SIGNAGE

FACILITIES PLANNING,
DESIGN & CONSTRUCTION
MONTANA STATE UNIVERSITY
BOZEMAN, MONTANA
PHONE: 406.994.4131 FAX: 406.994.6572

DRAWN BY: GAG		
REVIEWED BY:		
REV	DESCRIPTION	DATE

PPA#11-0154

SHEET
A5.13

DATE
11-22-11