



REQUEST FOR PROPOSAL

Project Title: Cooley Laboratory Renovation
Location: Montana State University

PPA No.: 10-0023
RFP No.: 12 12R
Date: 11/08/11 12/22/11

To: Dick Anderson Construction
4498 Jackrabbit Lane
Bozeman, MT 59718

Attention: Platisha

From: Cecilia Vaniman, Project Manager
Cooley Lab Renovation
Montana State University

Attention:

In order to expedite the Work and avoid or minimize delays in the Work the following proposal is requested. Please return a response by: 11/22/11 Date Sent: 11/09/11 Date Received:

RFP for Cooley/ARC Access Control and Door Revisions.

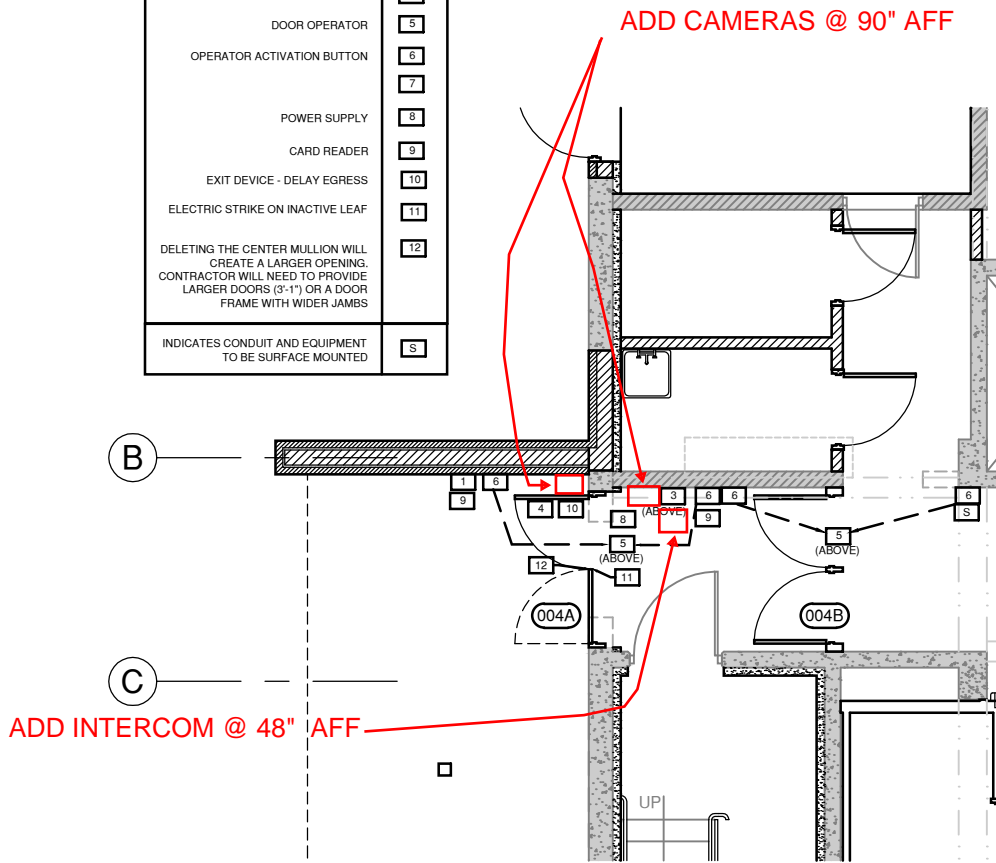
Reference Drawings: CD-3.0, CD-3.1, CD-3.2, CD-3.3, CD-3.4, CD-3.5, CD-3.6, CD-3.7 CD-3.8, CD-3.9, CD-3.10, CD-3.11, CD-3.12, CE-1, CE-2, CE-3, CE-4, CE-5 & CE-6

- A. Provide the Door and Security Access revisions outlined in the above referenced drawings.
B. Provide the Horn/Strobe Bell revisions shown on Attached CE-1 - Delete Light and Horn specified In 11605 2.3.A.1.d.

This RFP is for pricing purposes only. The contractor shall not proceed with the scope of work described within until pricing is approved by the owner in writing.


Distribution: [] Owner [] Agency [x] Architect [x] Contractor [] Engineer [] Other

INTERCOM & VIDEO UNIT	1
@ 48" AFF	2
SECURITY ALARM	3
WARNING SIGN MOUNTED TO DOOR	4
DOOR OPERATOR	5
OPERATOR ACTIVATION BUTTON	6
	7
POWER SUPPLY	8
CARD READER	9
EXIT DEVICE - DELAY EGRESS	10
ELECTRIC STRIKE ON INACTIVE LEAF	11
DELETING THE CENTER MULLION WILL CREATE A LARGER OPENING. CONTRACTOR WILL NEED TO PROVIDE LARGER DOORS (3'-1") OR A DOOR FRAME WITH WIDER JAMBS	12
INDICATES CONDUIT AND EQUIPMENT TO BE SURFACE MOUNTED	S



**VERIFY HEIGHTS OF ALL EQUIPMENT WITH
MSU PROJECT MANAGER**

BASEMENT - WEST ENTRANCE

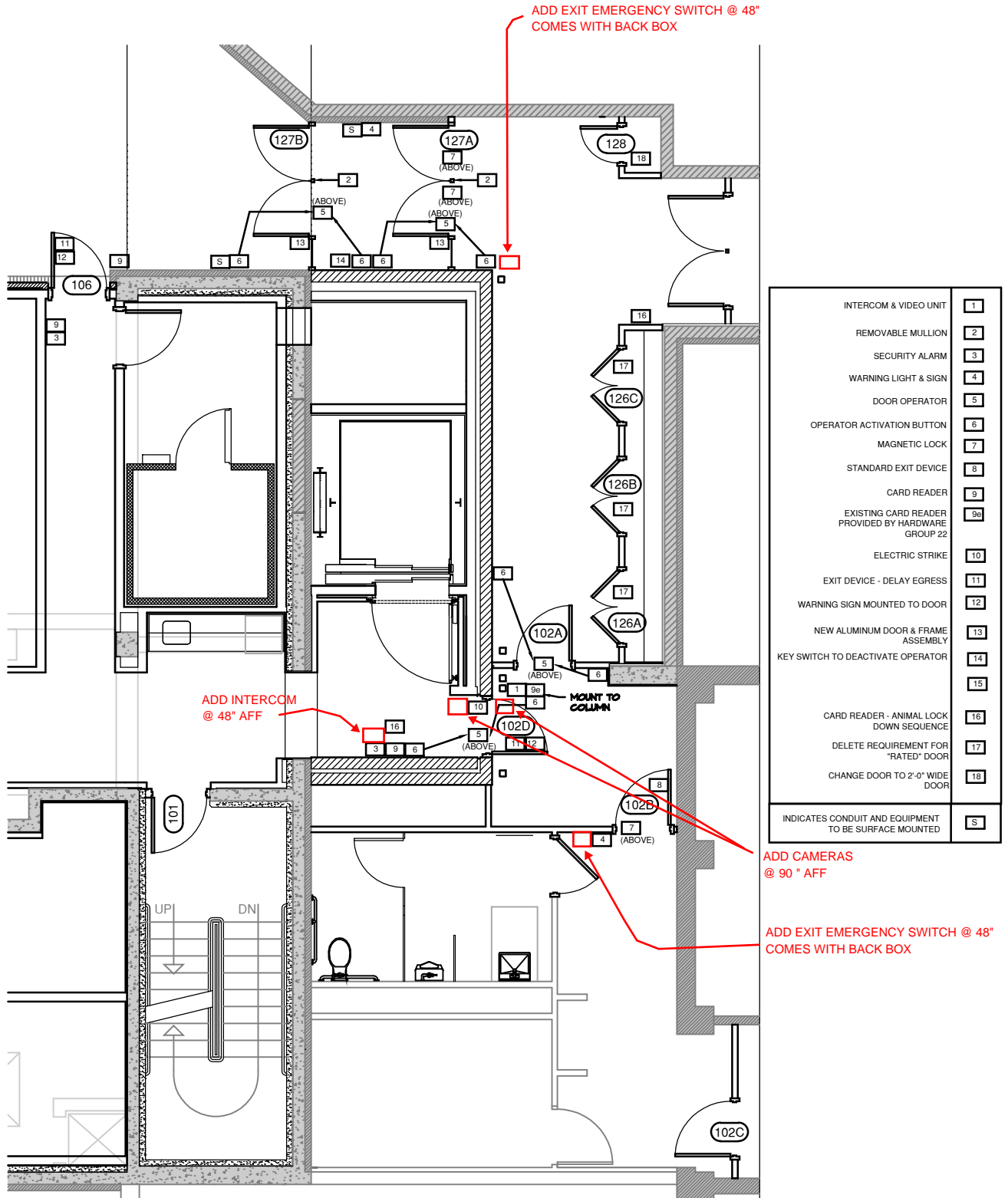


**Architects
Design
Group PC**
1 SUNSET PLAZA . KALISPELL, MONTANA
P 406.257.7125
E architects-design-group.com

Cooley Laboratory Remodeling
Bozeman, Montana
MSU PPA 10-0023
N.I.H. - N.C.R.R. Grant 1CO6RR30426
ADG Project 10-020

Clarification Drawing
CD-3.0
Date: 11.7.2011
Drawing Scale: 3/4"=1'-0"

**VERIFY HEIGHTS OF ALL EQUIPMENT WITH
MSU PROJECT MANAGER**



INTERCOM & VIDEO UNIT	1
REMOVABLE MULLION	2
SECURITY ALARM	3
WARNING LIGHT & SIGN	4
DOOR OPERATOR	5
OPERATOR ACTIVATION BUTTON	6
MAGNETIC LOCK	7
STANDARD EXIT DEVICE	8
CARD READER	9
EXISTING CARD READER PROVIDED BY HARDWARE GROUP 22	9a
ELECTRIC STRIKE	10
EXIT DEVICE - DELAY EGRESS	11
WARNING SIGN MOUNTED TO DOOR	12
NEW ALUMINUM DOOR & FRAME ASSEMBLY	13
KEY SWITCH TO DEACTIVATE OPERATOR	14
	15
CARD READER - ANIMAL LOCK DOWN SEQUENCE	16
DELETE REQUIREMENT FOR "RATED" DOOR	17
CHANGE DOOR TO 2'-0" WIDE DOOR	18
INDICATES CONDUIT AND EQUIPMENT TO BE SURFACE MOUNTED	S

1ST FLOOR - EAST ENTRANCE



**Architects
Design
Group PC**

1 SUNSET PLAZA . KALISPELL, MONTANA
P 406.257.7125
E architects-design-group.com

Cooley Laboratory Remodeling

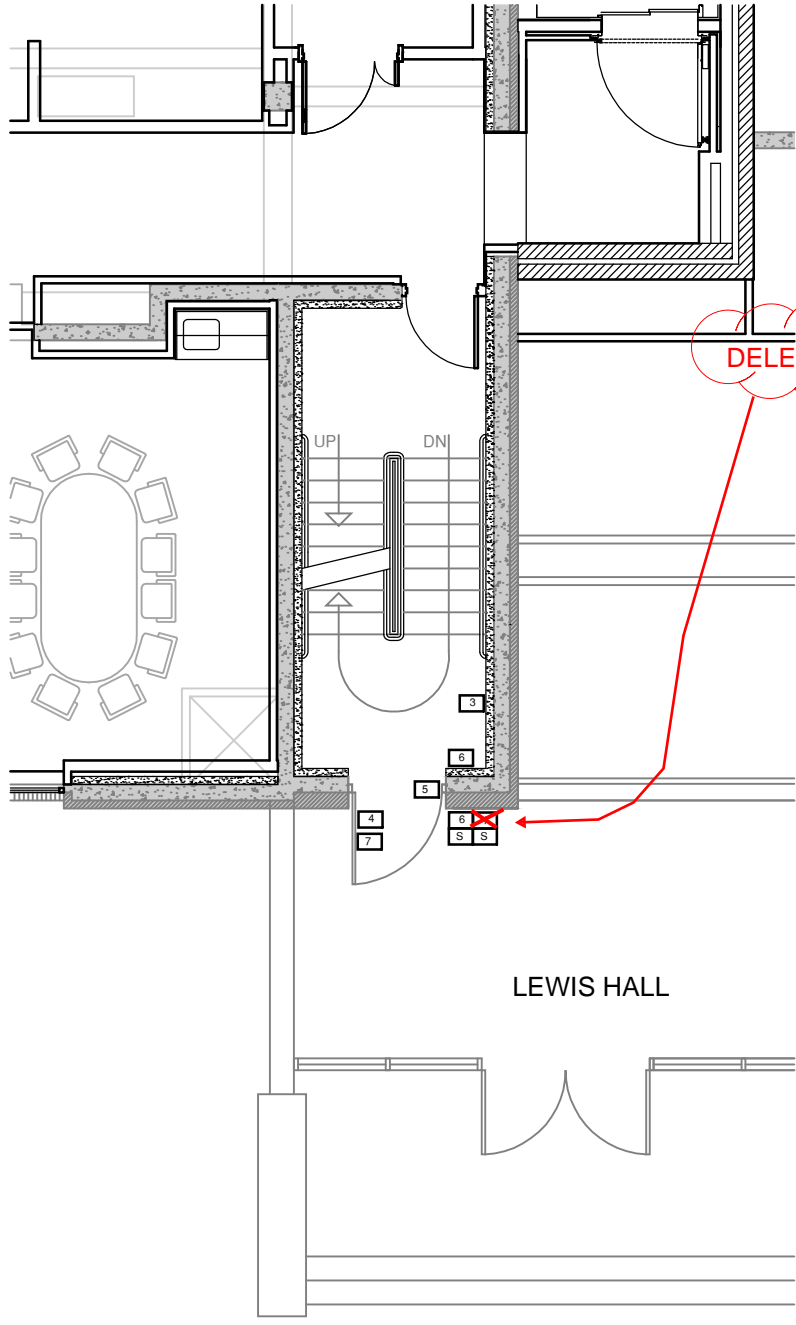
Bozeman, Montana
MSU PPA 10-0023
N.I.H. - N.C.R.R. Grant 1CO6RR30426

ADG Project 10-020

Clarification Drawing

CD-3.1

Date: 11.7.2011
Drawing Scale: 3/8"=1'-0"



DELETE

INTERCOM & VIDEO LIGHT	1
SECURITY ALARM	2
WARNING SIGN	3
ELECTRIC STRIKE	4
CARD READER	5
EXIT DEVICE - DELAY EGRESS	6
INDICATES CONDUIT AND EQUIPMENT TO BE SURFACE MOUNTED	S

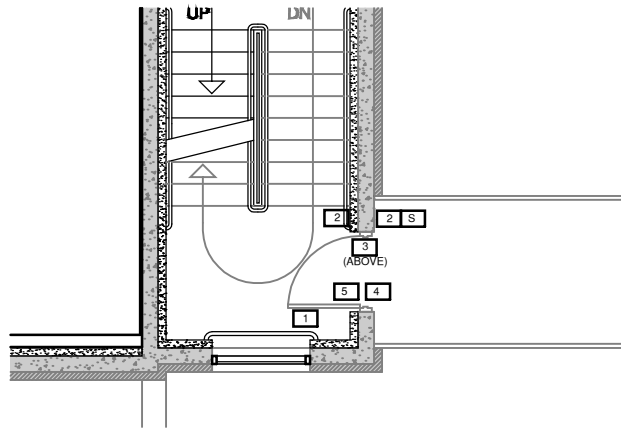
2ND FLOOR - SOUTH STAIR



**Architects
Design
Group PC**
1 SUNSET PLAZA . KALISPELL, MONTANA
P 406.257.7125
E architects-design-group.com

Cooley Laboratory Remodeling
Bozeman, Montana
MSU PPA 10-0023
N.I.H. - N.C.R.R. Grant 1CO6RR30426
ADG Project 10-020

Clarification Drawing
CD-3.2
Date: 11.7.2011
Drawing Scale: 3/4"=1'-0"



SECURITY ALARM	1
CARD READER	2
ELECTRIC STRIKE	3
WARNING SIGN	4
EXIT DEVICE - DELAY EGRESS	5
INDICATES CONDUIT AND EQUIPMENT TO BE SURFACE MOUNTED	S

4TH FLOOR SKYWAY



**Architects
Design
Group PC**

1 SUNSET PLAZA . KALISPELL, MONTANA
P 406.257.7125
E architects-design-group.com

Cooley Laboratory Remodeling

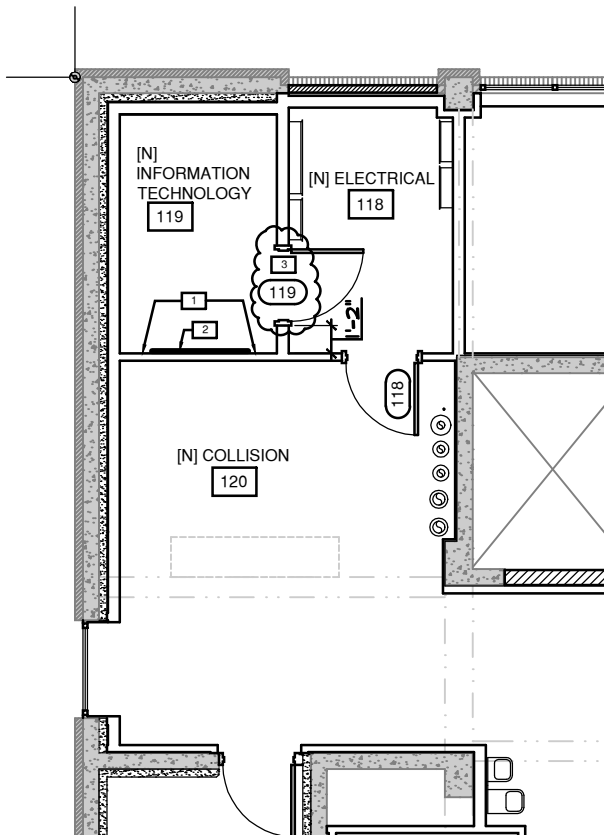
Bozeman, Montana
MSU PPA 10-0023
N.I.H. - N.C.R.R. Grant 1CO6RR30426

ADG Project 10-020

Clarification Drawing


CD-3.3

Date: 11.7.2011
Drawing Scale: 3/8"=1'-0"



ADDITIONAL ELECTRICAL OUTLETS FOR EQUIPMENT	1
4' x 4' PLYWOOD- SECURE TO WALL FOR EQUIPMENT MOUNTING - PAINT. MOUNT BOTTOM OF BOARD 36" ABOVE FINISHED FLOOR	2
ADJUST DOOR LOCATION	3

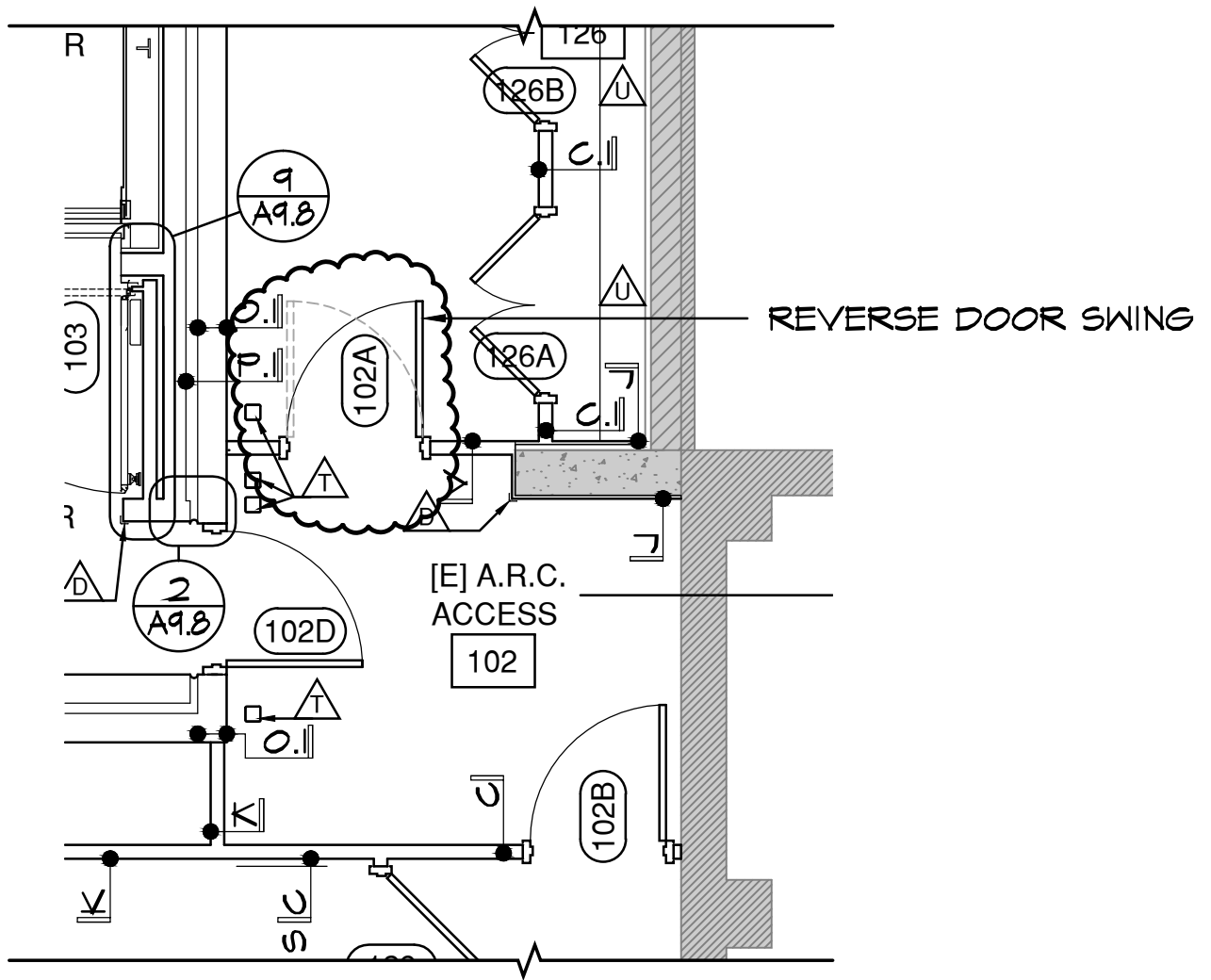
1ST FLOOR - NORTHWEST CORNER




**Architects
Design
Group PC**
1 SUNSET PLAZA . KALISPELL, MONTANA
P 406.257.7125
E architects-design-group.com

Cooley Laboratory Remodeling
Bozeman, Montana
MSU PPA 10-0023
N.I.H. - N.C.R.R. Grant 1CO6RR30426
ADG Project 10-020

Clarification Drawing
CD-3.4
Date: 11.7.2011
Drawing Scale: 3/8"=1'-0"



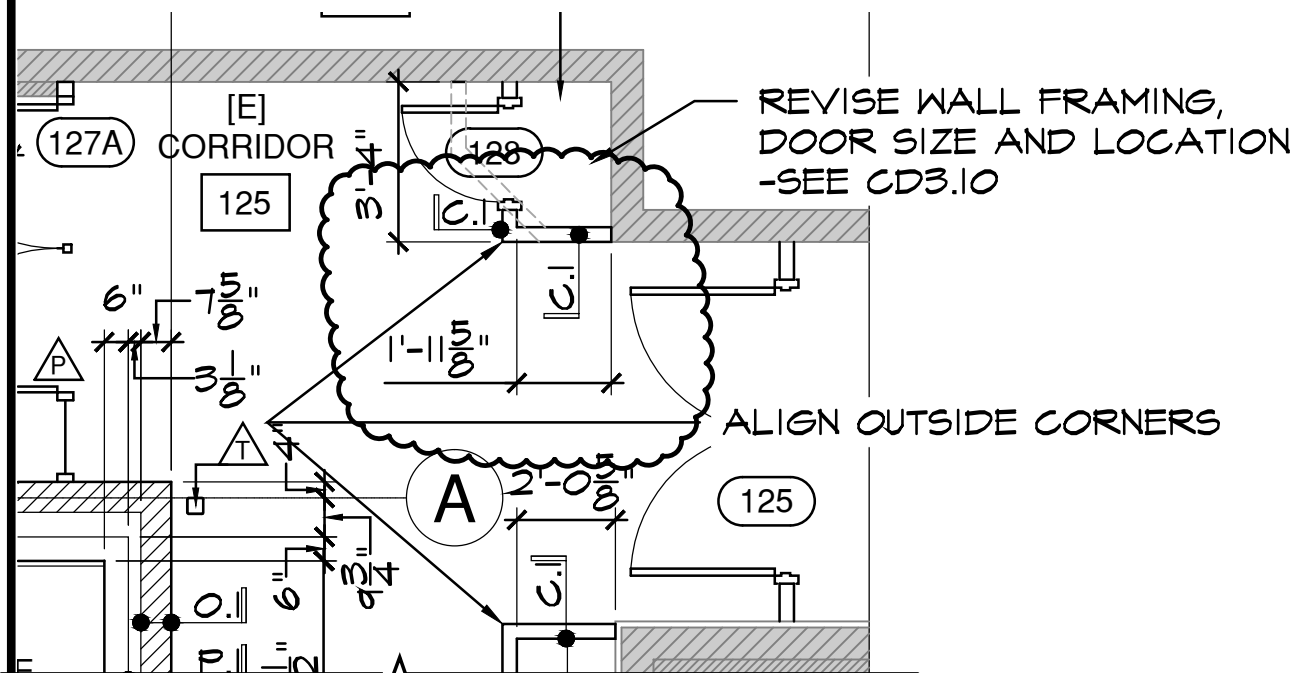
1ST FLOOR - EAST CORRIDOR




**Architects
Design
Group PC**
1 SUNSET PLAZA . KALISPELL, MONTANA
P 406.257.7125
E architects-design-group.com

Cooley Laboratory Remodeling
Bozeman, Montana
MSU PPA 10-0023
N.I.H. - N.C.R.R. Grant 1CO6RR30426
ADG Project 10-020

Clarification Drawing
CD-3.5
Date: 11.7.2011
Drawing Scale: 3/8"=1'-0"



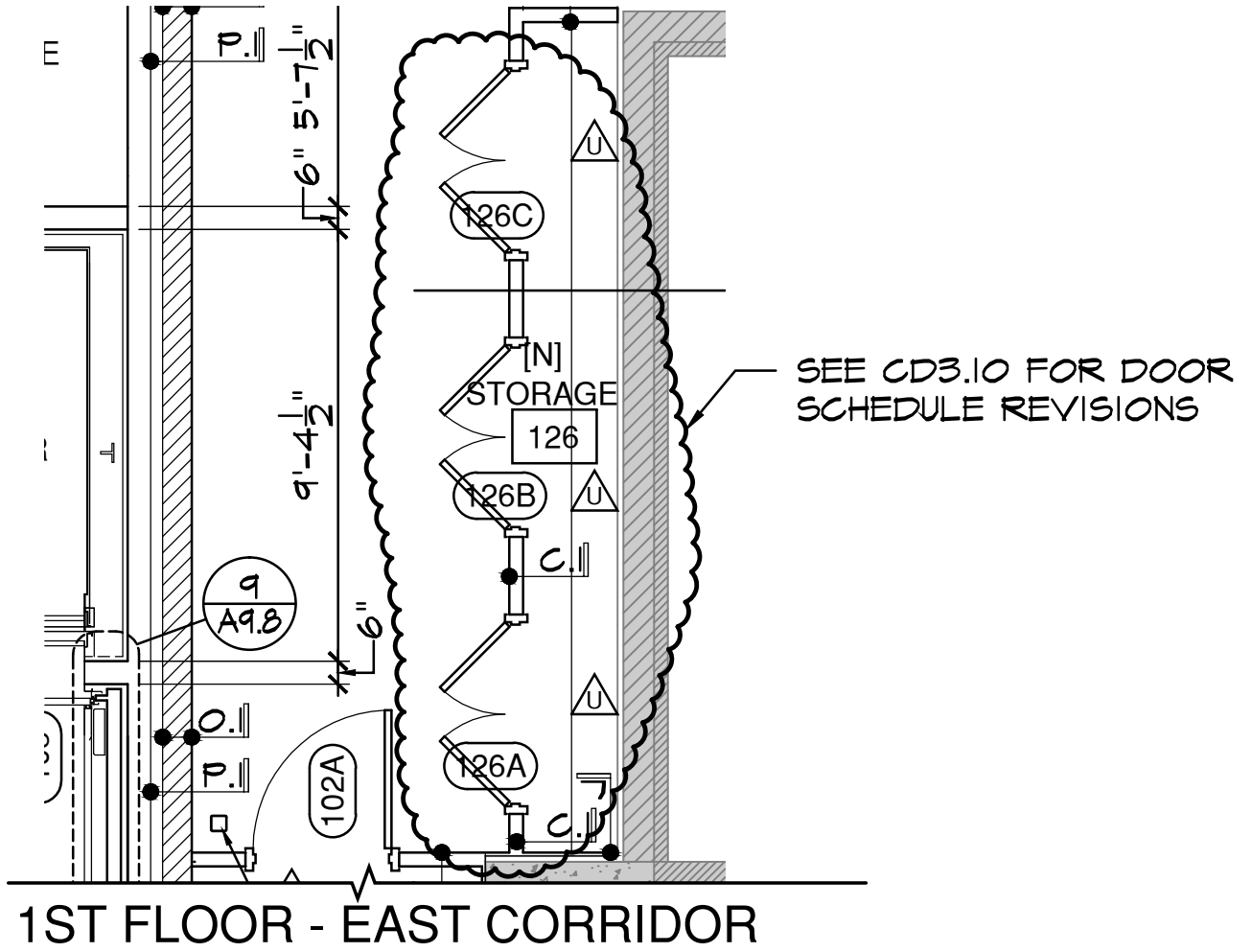

1ST FLOOR - NORTH EAST CORRIDOR



**Architects
Design
Group PC**
1 SUNSET PLAZA . KALISPELL, MONTANA
P 406.257.7125
E architects-design-group.com

Cooley Laboratory Remodeling
Bozeman, Montana
MSU PPA 10-0023
N.I.H. - N.C.R.R. Grant 1CO6RR30426
ADG Project 10-020

Clarification Drawing
CD-3.6
Date: 11.7.2011
Drawing Scale: 3/8"=1'-0"

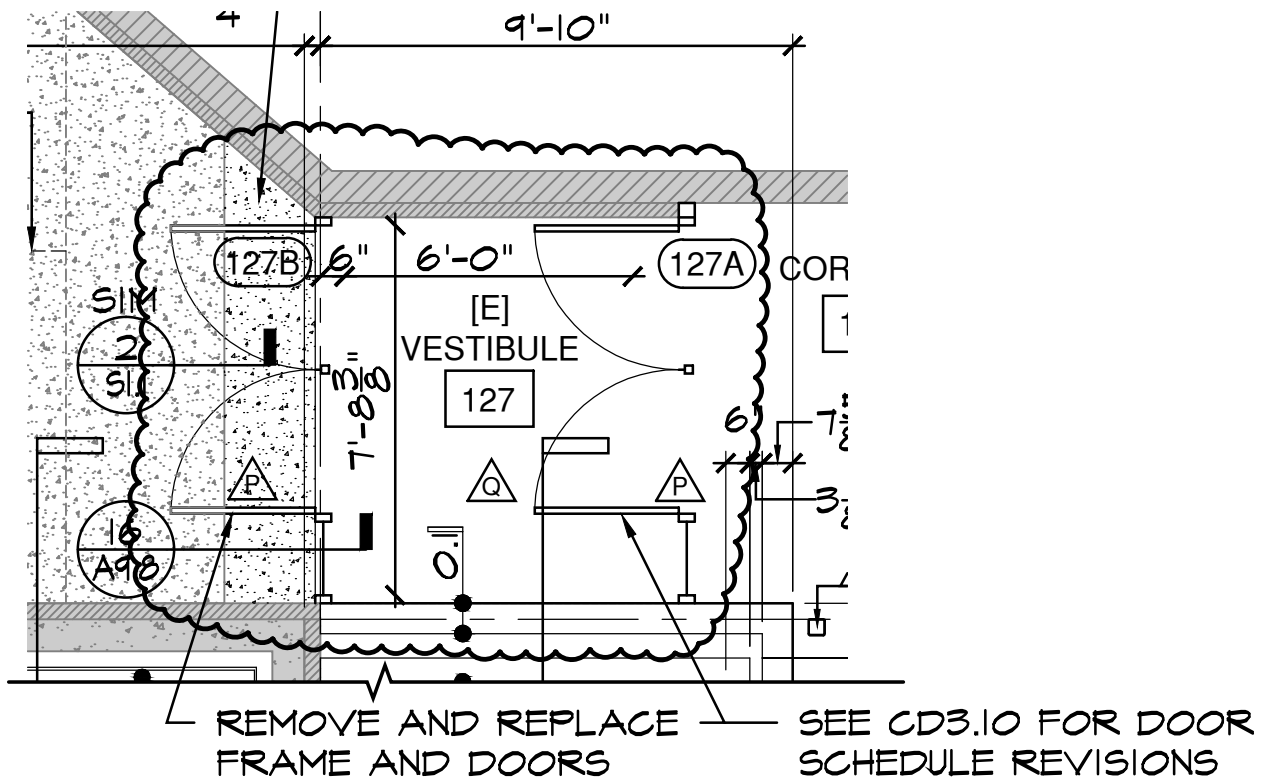
**Architects
Design
Group PC**

1 SUNSET PLAZA . KALISPELL, MONTANA
P 406.257.7125
E architects-design-group.com

Cooley Laboratory Remodeling
Bozeman, Montana
MSU PPA 10-0023
N.I.H. - N.C.R.R. Grant 1CO6RR30426
ADG Project 10-020

Clarification Drawing
CD-3.7

Date: 11.7.2011
Drawing Scale: 3/8"=1'-0"



1ST FLOOR - NORTHEAST CORRIDOR



**Architects
Design
Group PC**

1 SUNSET PLAZA . KALISPELL, MONTANA
P 406.257.7125
E architects-design-group.com

Cooley Laboratory Remodeling

Bozeman, Montana
MSU PPA 10-0023
N.I.H. - N.C.R.R. Grant 1CO6RR30426

ADG Project 10-020

Clarification Drawing

CD-3.8

Date: 11.7.2011
Drawing Scale: 3/8"=1'-0"

DOOR SCHEDULE: FLOOR 1

DOOR NUMBER	SIZE			DOOR					FRAME				DETAILS				
	WIDTH	HEIGHT	THICKNESS	DOOR TYPE	DOOR GLAZING	DOOR SIGN	HARDWARE	FIRE RATING	SPECIAL	TYPE	GLAZING	FIRE RATING	SPECIAL	HEAD	JAMB	JAMB	THRESHOLD
124	4'	7'	1 3/4"	B	*	*	H4	*	*	TU	*	*	*	1/A9.5	2/A9.5	2/A9.5	*
126A	4'	7'	1 3/4"	BB	*	*	H4	*	*	TU	*	*	*	1/A9.5	2/A9.5	2/A9.5	*
126B	4'	7'	1 3/4"	BB	*	*	H4	*	*	TU	*	*	*	1/A9.5	2/A9.5	2/A9.5	*
126C	4'	7'	1 3/4"	BB	*	*	H4	*	*	TU	*	*	*	1/A9.5	2/A9.5	2/A9.5	*
127A	6'	7'	2+-	HH	GL1	*	*	*	*	FB	GL2	*	*	1/CD3.11	2/CD3.11	*	3/CD3.12
127B	6'	7'	2+-	HH	GL1	*	*	*	*	FB	GL2	*	*	1/CD3.11	2/CD3.11	*	3/CD3.12
128	2'	7'	1 3/4"	B	*	*	H4	*	*	TU	*	*	*	1/A9.5	2/A9.5	2/A9.5	*
129	4'	7'	1 3/4"	B	*	*	H4	*	*	TU	*	*	*	1/A9.5	2/A9.5	2/A9.5	*

PROVIDE NEW DOORS AND FRAMES

DELETE DOOR SIZE AND FIRE RATING

DELETE FIRE RATING



**Architects
Design
Group PC**

1 SUNSET PLAZA . KALISPELL, MONTANA
P 406.257.7125
E architects-design-group.com

Cooley Laboratory Remodeling

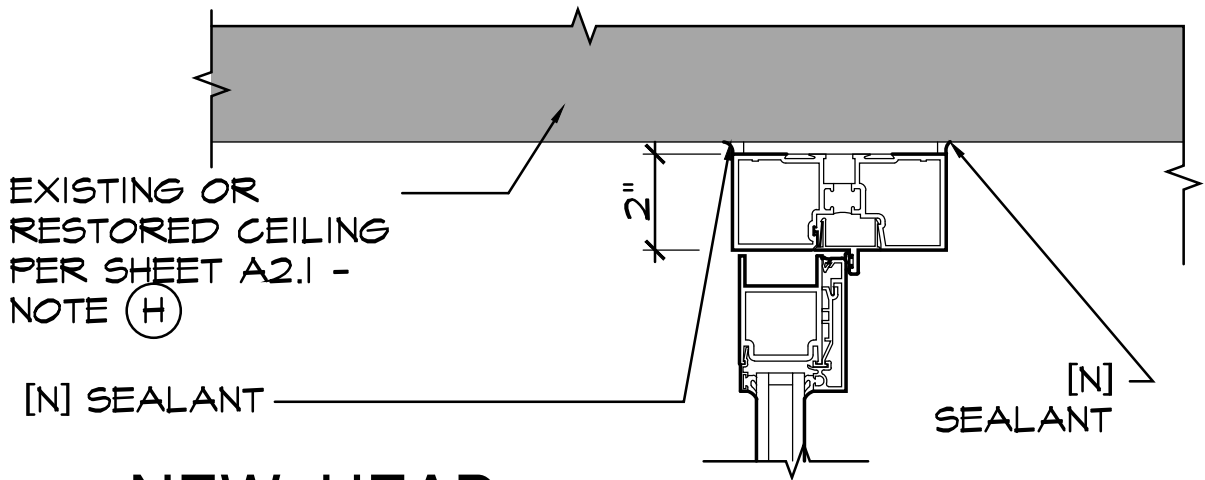
Bozeman, Montana
MSU PPA 10-0023
N.I.H. - N.C.R.R. Grant 1CO6RR30426

ADG Project 10-020

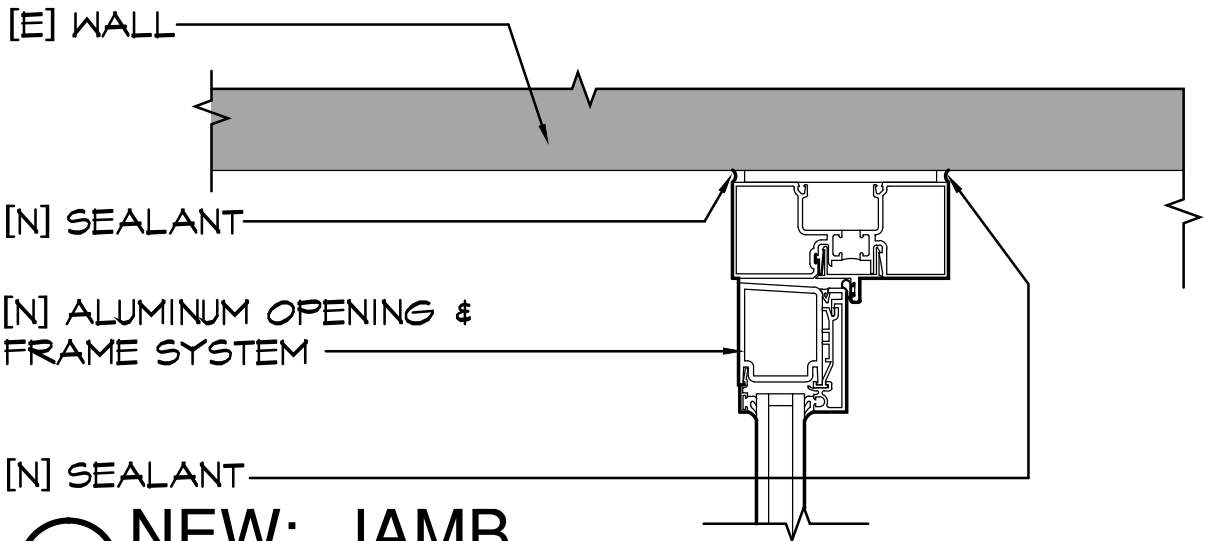
Clarification Drawing

CD-3.10

Date: 11.7.2011
Drawing Scale: 3/8"=1'-0"



1 NEW: HEAD
3"=1'-0"



2 NEW: JAMB
3"=1'-0"



**Architects
Design
Group PC**

1 SUNSET PLAZA . KALISPELL, MONTANA
P 406.257.7125
E architects-design-group.com

Cooley Laboratory Remodeling

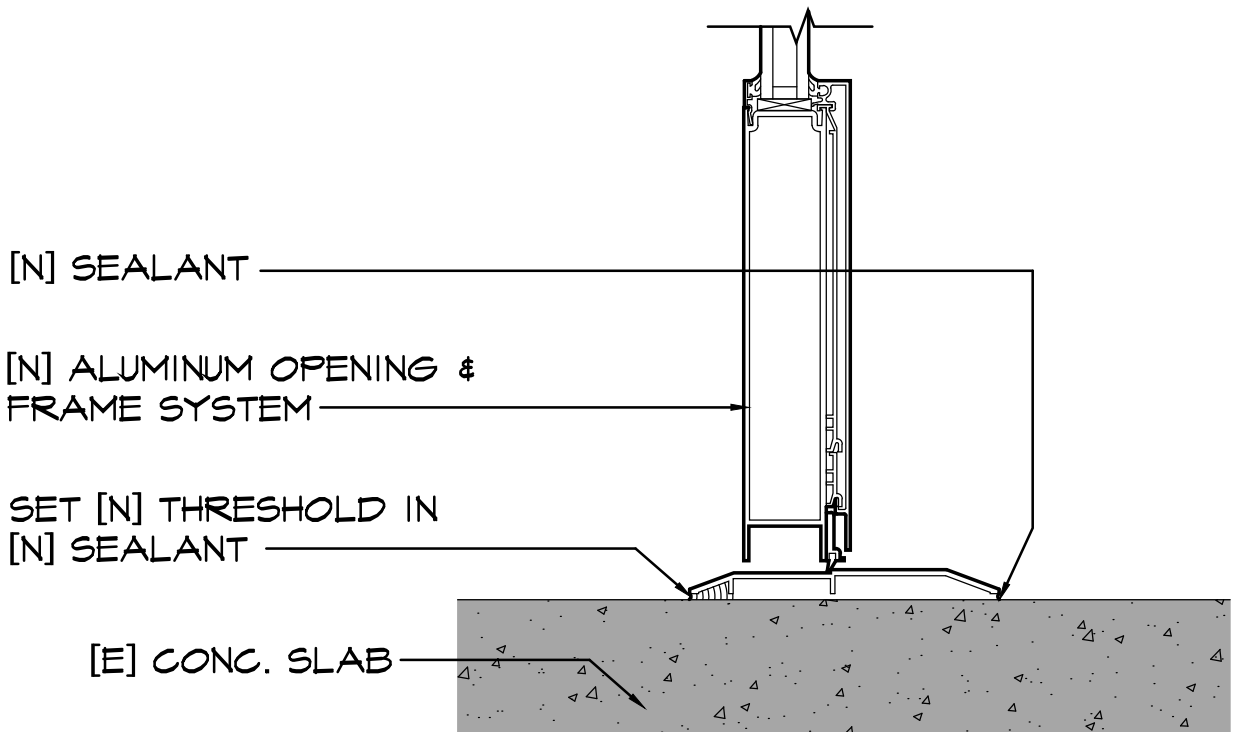
Bozeman, Montana
MSU PPA 10-0023
N.I.H. - N.C.R.R. Grant 1CO6RR30426

ADG Project 10-020

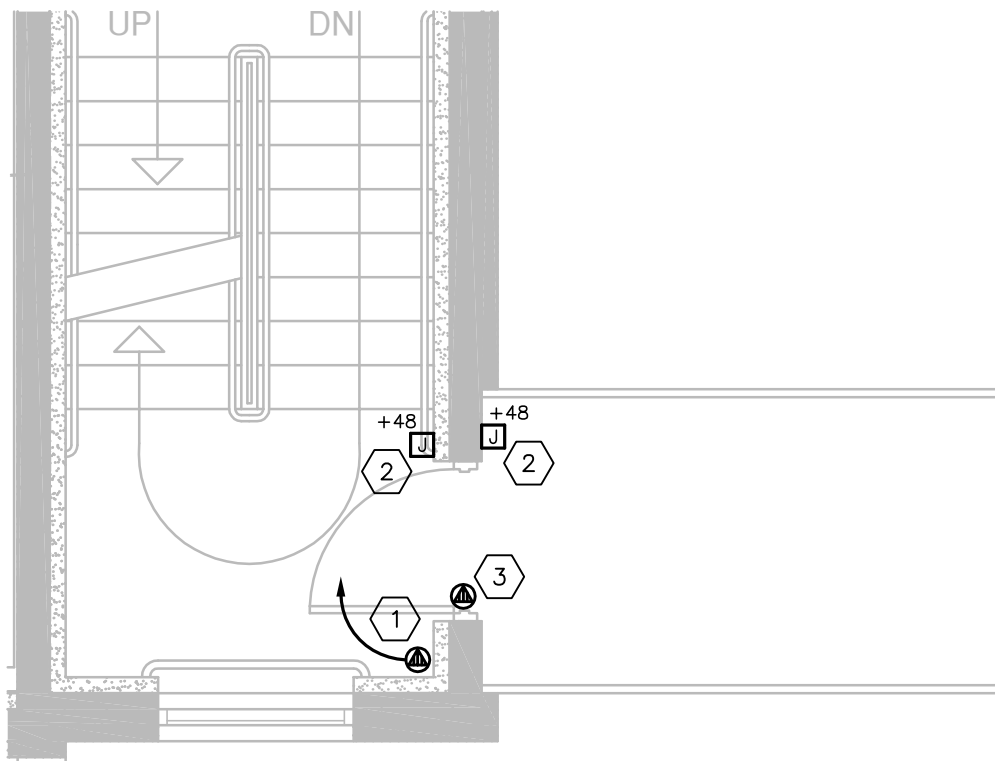
Clarification Drawing

CD-3.11

Date: 11.7.2011
Drawing Scale: 3/8"=1'-0"

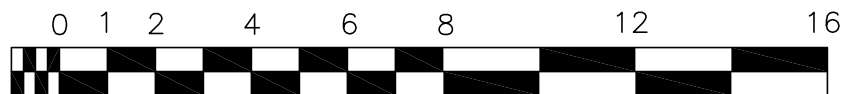


3 NEW: THRESHOLD
 3"=1'-0"



FOURTH FLOOR ELECTRICAL PLAN

SCALE: 1/4"=1'-0"



SCALE: 1/4"=1'-0"

GENERAL SHEET NOTES:

- A. ALL J-BOXES SHALL BE DEEP SINGLE GANG AND RECESSED WHERE POSSIBLE. WHEN BOXES ARE SURFACE MOUNTED, THEY SHALL BE CAST TYPE.

SPECIFIC SHEET NOTES:

- 1 PROVIDE 120V CONNECTION TO DOOR POWER SUPPLY AND MOUNT HIGH ON THE WALL. CONNECT TO SPARE 20A-1P BREAKER IN PANEL 'EML4C' VIA #12 AND #12G IN 1/2". PROVIDE CONNECTION TO FIRE ALARM PANEL FOR DOOR RELEASE UPON FIRE ALARM SIGNAL. PROVIDE ALL LOW VOLTAGE WIRING TO DOOR AS REQUIRED. COORDINATE REQUIREMENTS WITH DOOR HARDWARE SUPPLIER.
- 2 PROVIDE ROUGH-IN FOR CARD READER. PROVIDE 3/4" CONDUIT TO CABLETRAY AND 3/4" CONDUIT TO MAGNETIC LOCK AT DOOR FRAME.
- 3 PROVIDE CONNECTION TO "DELAY EXIT" DEVICE. COORDINATE WIRING REQUIREMENTS WITH DOOR HARDWARE SUPPLIER. CONNECT TO DOOR POWER SUPPLY.



524 FIRST AVENUE S
GREAT FALLS, MT 59401
PH 406.452.9558
FX 406.727.9720

2291 W BROADWAY
SUITE 4
MISSOULA, MT 59808
PH 406.721.5936
FX 406.721.8716

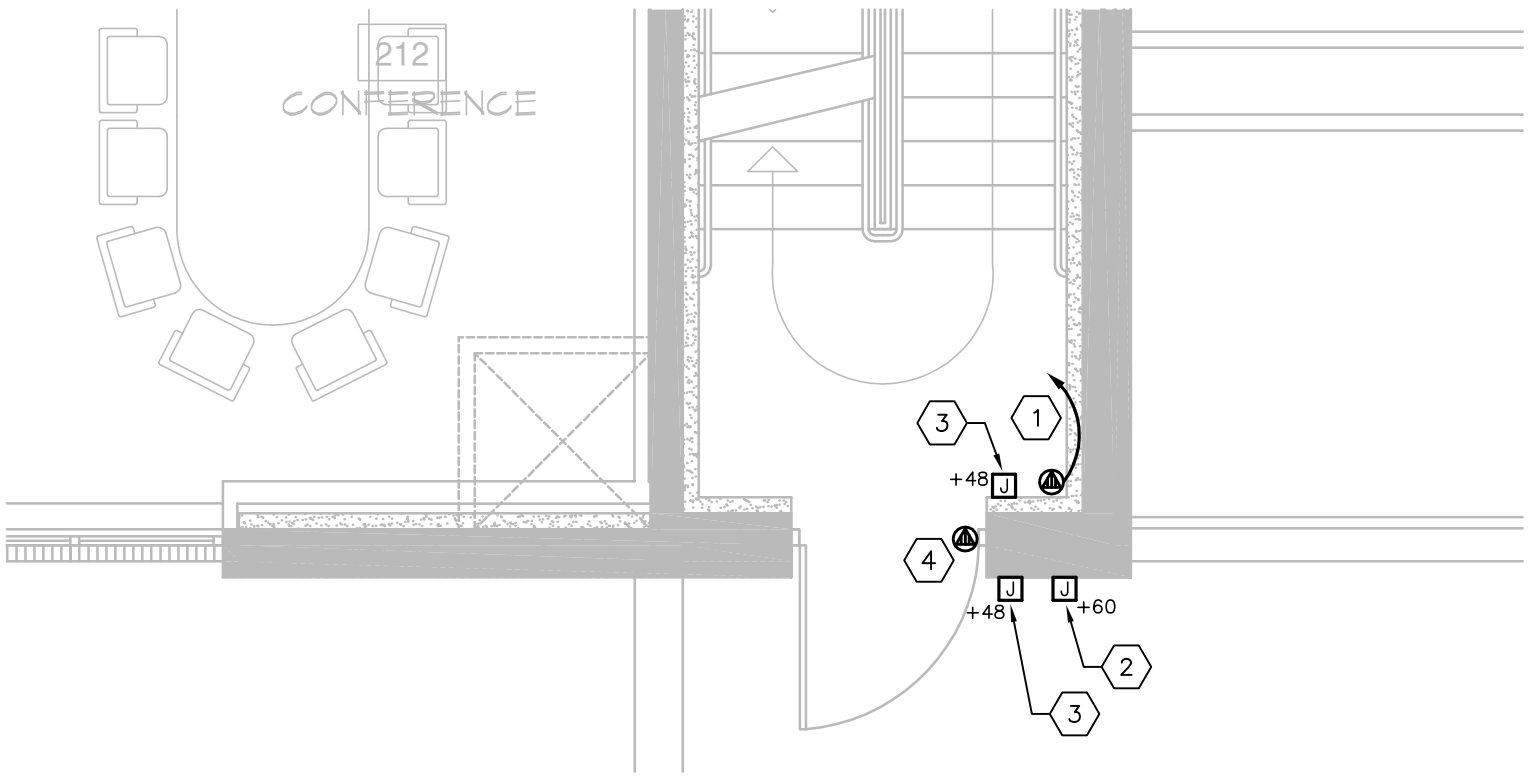
MONTANA STATE UNIVERSITY

COOLEY LAB REMODEL
BOZEMAN, MONTANA

REFERENCE SHEET:
E2.4

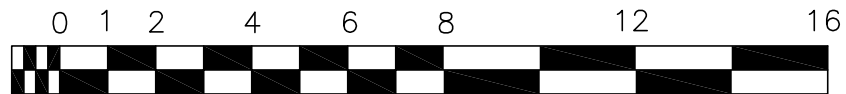
DATE
10/28/11
PROJECT NUMBER
100104

DRAWING
NUMBER
CE-6



SECOND FLOOR ELECTRICAL PLAN

SCALE: 1/4"=1'-0"



SCALE: 1/4"=1'-0"

GENERAL SHEET NOTES:

- A. ALL J-BOXES SHALL BE DEEP SINGLE GANG AND RECESSED WHERE POSSIBLE. WHEN BOXES ARE SURFACE MOUNTED, THEY SHALL BE CAST TYPE.

SPECIFIC SHEET NOTES:

- ① PROVIDE 120V CONNECTION TO DOOR POWER SUPPLY AND MOUNT HIGH ON THE WALL. CONNECT TO SPARE 20A-1P BREAKER IN PANEL 'EML2C' VIA 2#12 AND #12G IN 1/2". PROVIDE CONNECTION TO FIRE ALARM PANEL FOR DOOR RELEASE UPON FIRE ALARM SIGNAL. PROVIDE ALL LOW VOLTAGE WIRING TO DOOR AS REQUIRED. COORDINATE REQUIREMENTS WITH DOOR HARDWARE SUPPLIER.
- ② PROVIDE ROUGH-IN FOR VIDEO INTERCOM DEVICE. CONNECT BOX TO CABLETRAY WITH 1" CONDUIT.
- ③ PROVIDE ROUGH-IN FOR CARD READER. PROVIDE 3/4" CONDUIT TO CABLETRAY AND 3/4" CONDUIT TO MAGNETIC LOCK AT DOOR FRAME.
- ④ PROVIDE CONNECTION TO "DELAY EXIT" DEVICE. COORDINATE WIRING REQUIREMENTS WITH DOOR HARDWARE SUPPLIER. CONNECT TO DOOR POWER SUPPLY.



524 FIRST AVENUE S
GREAT FALLS, MT 59401
PH 406.452.9558
FX 406.727.9720

2291 W BROADWAY
SUITE 4
MISSOULA, MT 59808
PH 406.721.5936
FX 406.721.8716

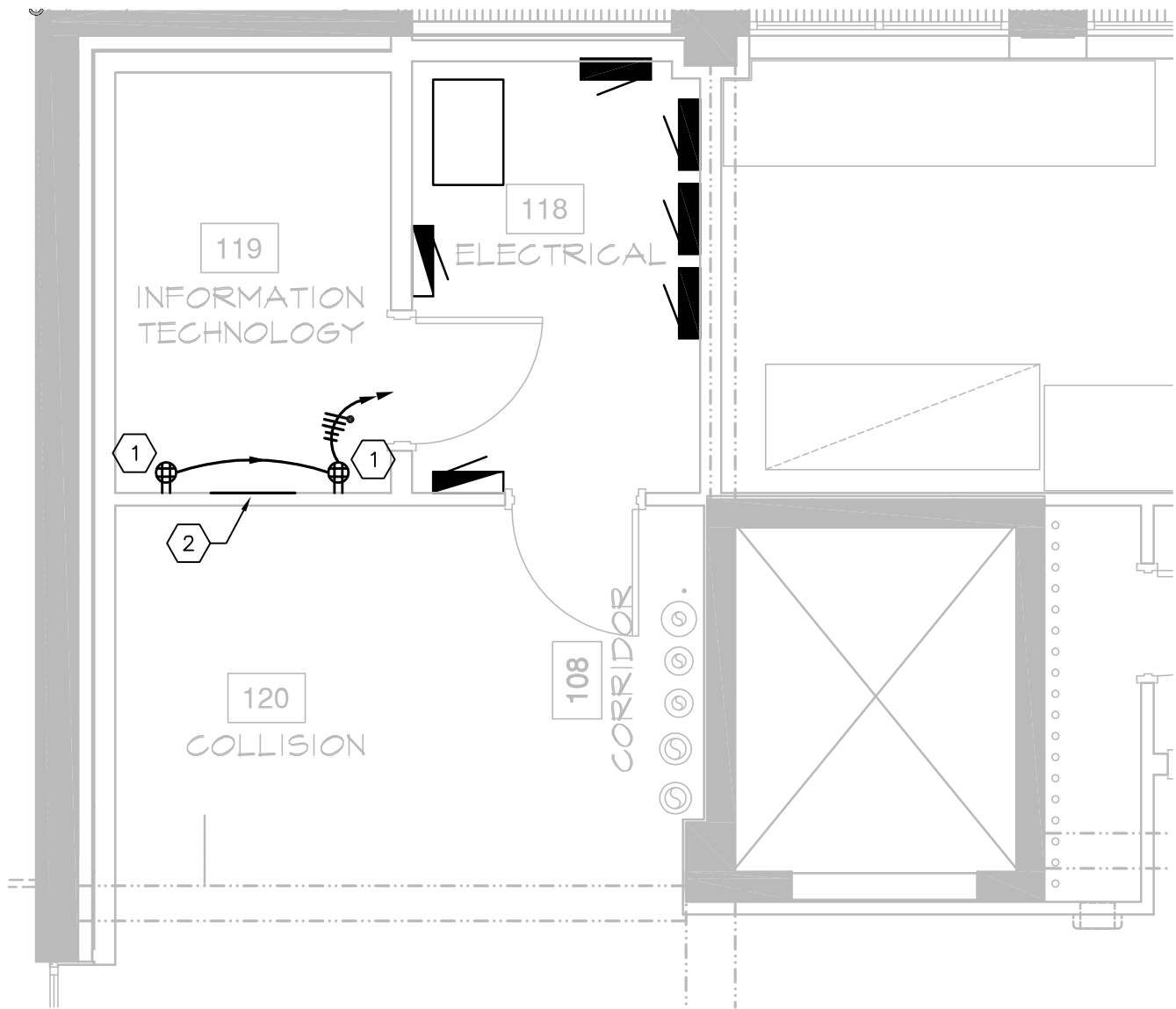
MONTANA STATE UNIVERSITY

COOLEY LAB REMODEL
BOZEMAN, MONTANA

REFERENCE SHEET:
E2.2

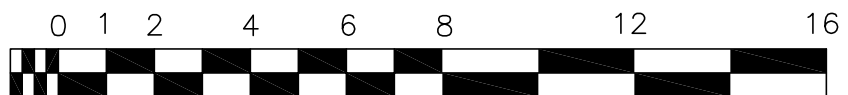
DATE
10/28/11
PROJECT NUMBER
100104

DRAWING
NUMBER
CE-5



FIRST FLOOR ELECTRICAL PLAN

SCALE: 1/4"=1'-0"



SCALE: 1/4"=1'-0"

SPECIFIC SHEET NOTES:

- ① PROVIDE ADDITIONAL DOUBLE DUPLEX RECEPTACLES, EACH ON DEDICATED CIRCUIT FROM PANEL 'EMBL'. CONNECT TO SPARE 20A-1P BREAKER VIA 2#12 AND #12G IN 3/4" CONDUIT.
- ② PROVIDE ADDITIONAL 48"X48" PLYWOOD (FIRE PAINTED) ON THIS WALL, MOUNT BOTTOM OF BOARD 36" AFF.



524 FIRST AVENUE S
GREAT FALLS, MT 59401
PH 406.452.9558
FX 406.727.9720

2291 W BROADWAY
SUITE 4
MISSOULA, MT 59808
PH 406.721.5936
FX 406.721.8716

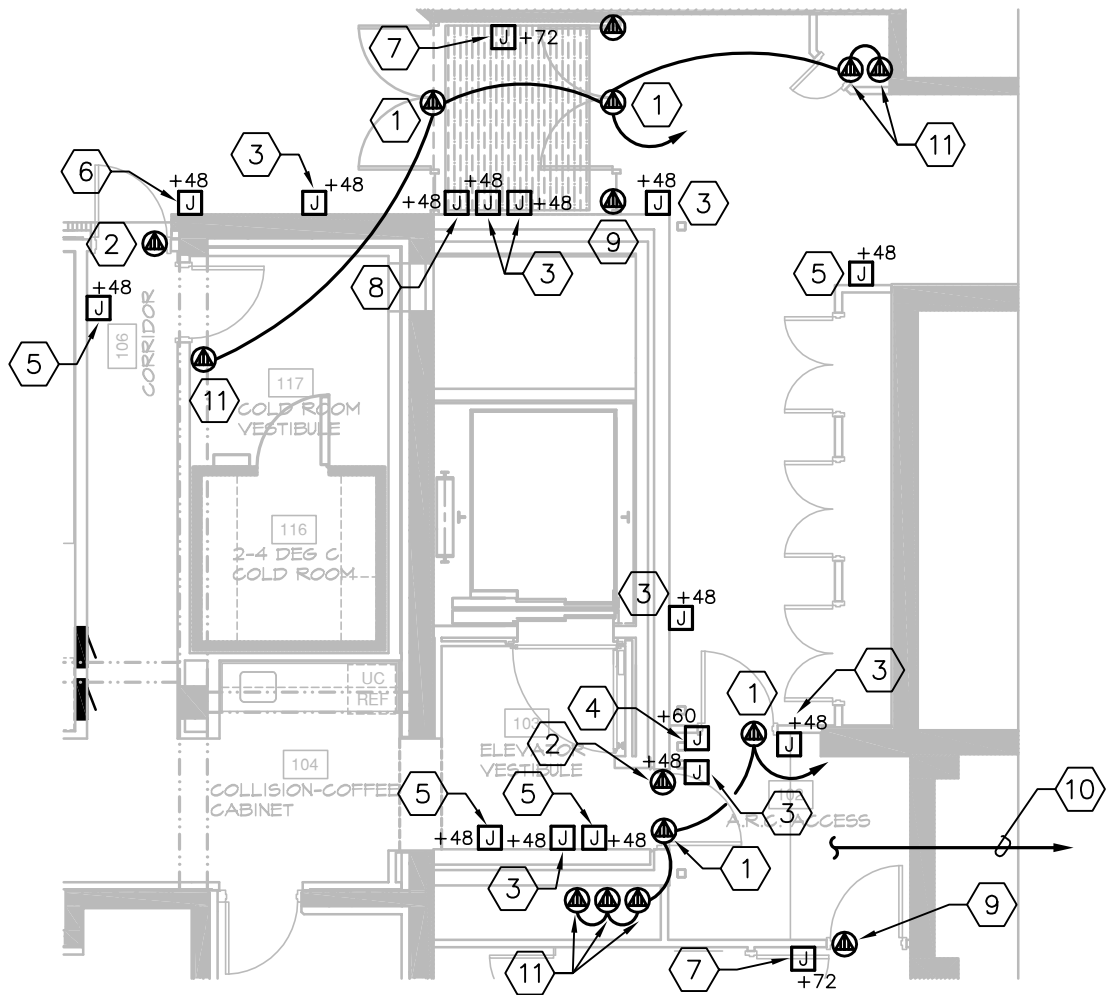
MONTANA STATE UNIVERSITY

COOLEY LAB REMODEL
BOZEMAN, MONTANA

REFERENCE SHEET:
E2.1

DATE
10/28/11
PROJECT NUMBER
100104

DRAWING
NUMBER
CE-4



FIRST FLOOR ELECTRICAL PLAN

SCALE: 1/8"=1'-0"

GENERAL SHEET NOTES:

- A. J-BOXES SHALL BE DEEP SINGLE GANG AND RECESSED WHERE POSSIBLE. WHEN BOXES ARE SURFACE MOUNTED, THEY SHALL BE CAST TYPE.

SPECIFIC SHEET NOTES:

- ① PROVIDE 120V CONNECTION TO MOTORIZED DOOR OPENER VIA 2#12 AND #12G IN 1/2" CONDUIT TO PANEL 'EML1C'. CONNECT TO SPARE 20A-1P BREAKER.
- ② PROVIDE CONNECTION TO "DELAY EXIT" DEVICE. COORDINATE WIRING REQUIREMENTS WITH DOOR HARDWARE SUPPLIER. CONNECT TO DOOR POWER SUPPLY.
- ③ PROVIDE ROUGH-IN FOR MOTORIZED DOOR OPERATOR. PROVIDE 1/2" CONDUIT FROM J-BOX TO DOOR OPERATOR ABOVE DOOR AND ALL WIRING AND CONNECTIONS AS REQUIRED. COORDINATE WITH DOOR HARDWARE SUPPLIER.
- ④ PROVIDE ROUGH-IN FOR VIDEO INTERCOM DEVICE. CONNECT BOX TO CABLETRAY WITH 1" CONDUIT.
- ⑤ PROVIDE ROUGH-IN FOR CARD READER. PROVIDE 3/4" CONDUIT TO CABLETRAY AND 3/4" CONDUIT TO MAGNETIC LOCK/ELECTRIC STRIKE.
- ⑥ RELOCATED ROUGH-IN FOR CARD READER. SEE NOTE 5.
- ⑦ PROVIDE ROUGH-IN FOR WARNING LIGHT. PROVIDE 3/4" CONDUIT TO CABLETRAY.
- ⑧ PROVIDE ROUGH-IN FOR POWERED DOOR KEYED SWITCH. PROVIDE 1/2" CONDUIT TO EACH DOOR OPENER AND WIRING AS REQUIRED.
- ⑨ PROVIDE ROUGH-IN FOR MAGNETIC LOCK. CONNECT TO DOOR POWER SUPPLY AND PROVIDE 3/4" CONDUIT FROM DOOR FRAME TO CABLETRAY.
- ⑩ PROVIDE 1" CONDUIT FROM CABLETRAY TO LEWIS 109. COORDINATE EXACT ROUTE WITH DICK ANDERSON CONSTRUCTION. TERMINATE CONDUIT IN J-BOX IN LEWIS 109, COORDINATE LOCATION WITH OWNER.
- ⑪ PROVIDE 120V CONNECTION TO DOOR POWER SUPPLY AND MOUNT HIGH ON THE WALL. CONNECT TO CIRCUIT THAT FEEDS MOTORIZED DOOR OPENERS. PROVIDE CONNECTION TO FIRE ALARM PANEL FOR DOOR RELEASE UPON FIRE ALARM SIGNAL. PROVIDE ALL LOW VOLTAGE WIRING TO DOOR AS REQUIRED. COORDINATE REQUIREMENTS WITH DOOR HARDWARE SUPPLIER.



524 FIRST AVENUE S
GREAT FALLS, MT 59401
PH 406.452.9558
FX 406.727.9720

2291 W BROADWAY
SUITE 4
MISSOULA, MT 59808
PH 406.721.5936
FX 406.721.8716

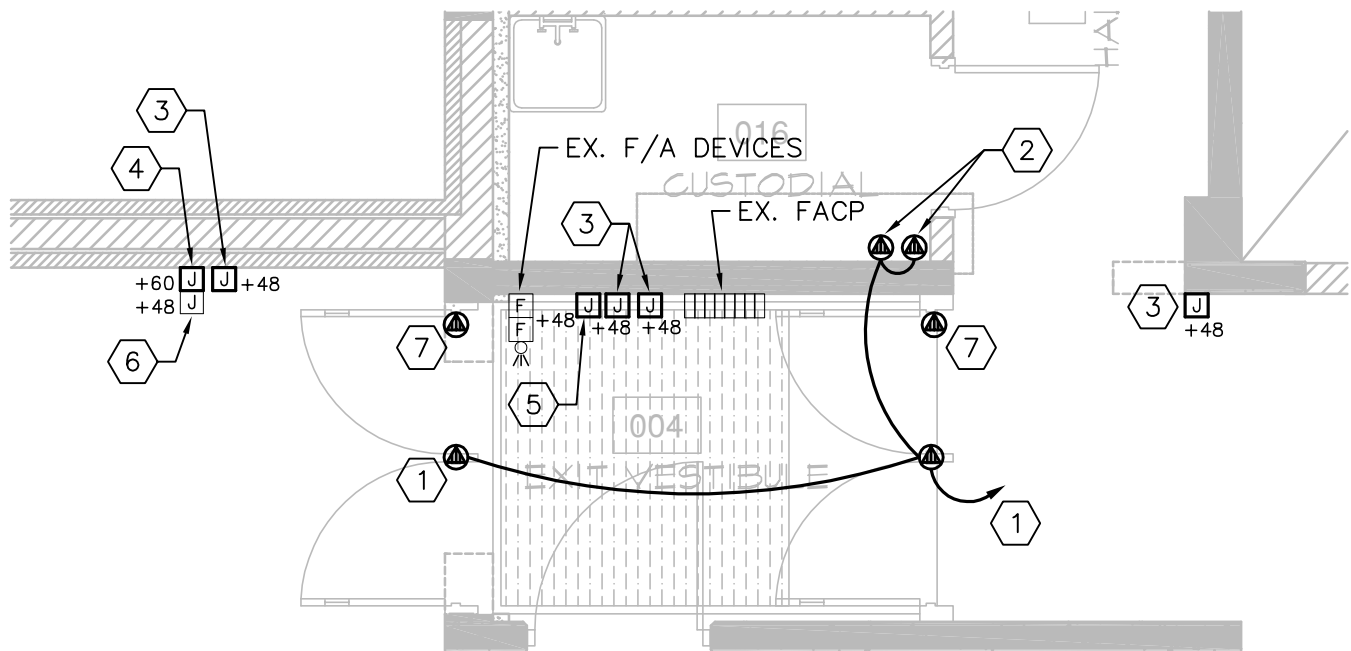
MONTANA STATE UNIVERSITY

COOLEY LAB REMODEL
BOZEMAN, MONTANA

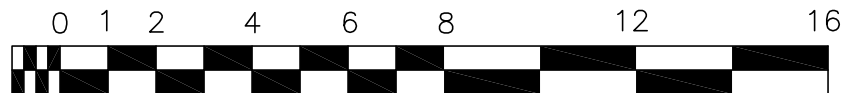
REFERENCE SHEET:
E2.1

DATE
10/28/11
PROJECT NUMBER
100104

DRAWING
NUMBER
CE-3



BASEMENT FLOOR ELECTRICAL PLAN




SCALE: 1/4" = 1'-0"

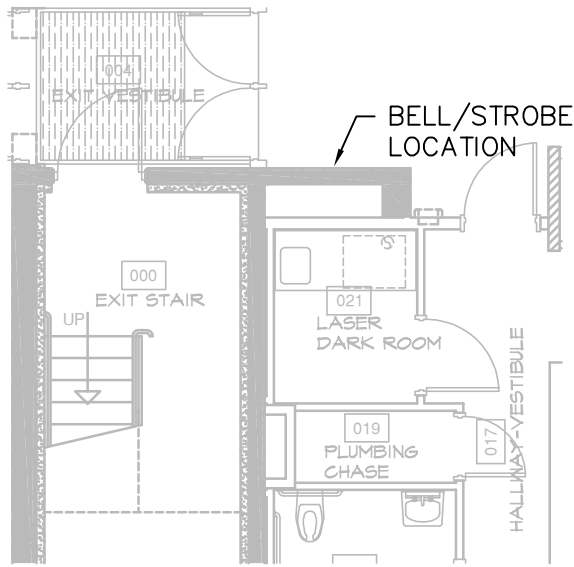
GENERAL SHEET NOTES:

- A. ALL J-BOXES SHALL BE DEEP SINGLE GANG AND RECESSED WHERE POSSIBLE. WHEN BOXES ARE SURFACE MOUNTED, THEY SHALL BE CAST TYPE.

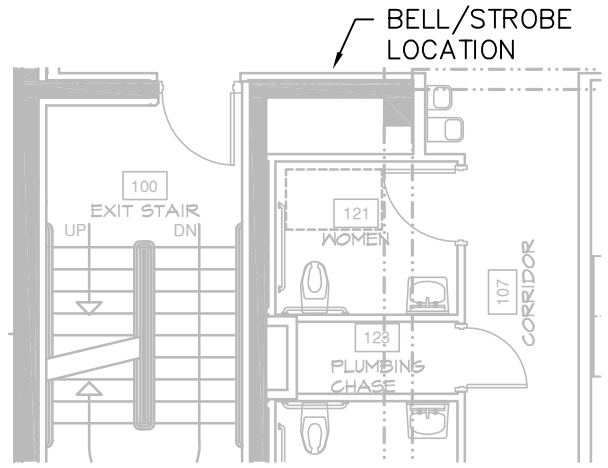
SPECIFIC SHEET NOTES:

- 1 PROVIDE 120V CONNECTION TO MOTORIZED DOOR OPENER VIA 2#12 AND #12G IN 1/2" CONDUIT TO PANEL 'EMLBA'. CONNECT TO SPARE 20A-1P BREAKER.
- 2 PROVIDE 120V CONNECTION TO DOOR POWER SUPPLY AND MOUNT HIGH ON THE WALL. CONNECT TO CIRCUIT THAT FEEDS MOTORIZED DOOR OPENERS. PROVIDE CONNECTION TO FIRE ALARM PANEL FOR DOOR RELEASE UPON FIRE ALARM SIGNAL. PROVIDE ALL LOW VOLTAGE WIRING TO DOOR AS REQUIRED. COORDINATE REQUIREMENTS WITH DOOR HARDWARE SUPPLIER.
- 3 PROVIDE ROUGH-IN FOR MOTORIZED DOOR OPERATOR. PROVIDE 1/2" CONDUIT FROM J-BOX TO DOOR OPERATOR ABOVE DOOR AND ALL WIRING AND CONNECTIONS AS REQUIRED. COORDINATE WITH DOOR HARDWARE SUPPLIER.
- 4 PROVIDE ROUGH-IN FOR VIDEO INTERCOM DEVICE. CONNECT BOX TO CABLETRAY WITH 1" CONDUIT. WIRING BY OTHERS.
- 5 ROUGH-IN FOR CARD READER. PROVIDE 3/4" CONDUIT TO ELECTRIC STRIKE IN DOOR FRAME AND 3/4" CONDUIT FROM DOOR FRAME TO CABLETRAY.
- 6 EXISTING ROUGH-IN FOR CARD READER. SAME AS NOTE 5.
- 7 PROVIDE CONNECTION TO "DELAY EXIT" DEVICE. COORDINATE WIRING REQUIREMENTS WITH DOOR HARDWARE SUPPLIER. CONNECT TO DOOR POWER SUPPLY.

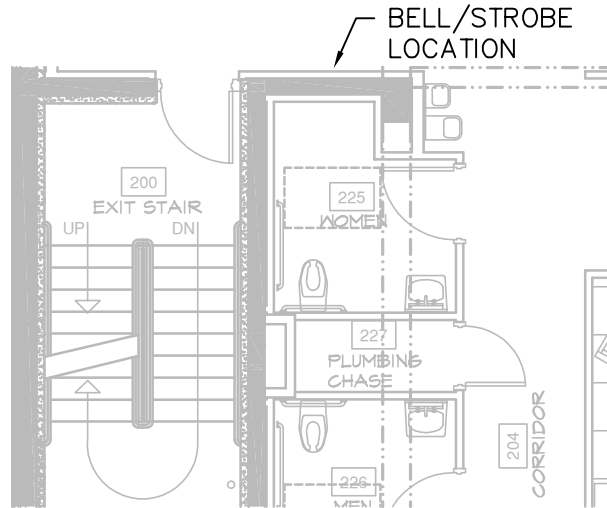
	524 FIRST AVENUE S GREAT FALLS, MT 59401 PH 406.452.9558 FX 406.727.9720	MONTANA STATE UNIVERSITY	REFERENCE SHEET: E2.0
	2291 W BROADWAY SUITE 4 MISSOULA, MT 59808 PH 406.721.5936 FX 406.721.8716	COOLEY LAB REMODEL BOZEMAN, MONTANA	DATE 10/28/11 PROJECT NUMBER 100104



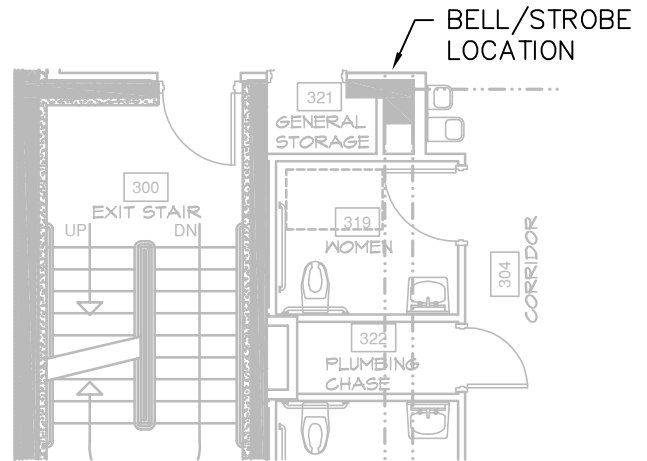
BASEMENT FLOOR
SCALE: 1/8"=1'-0"



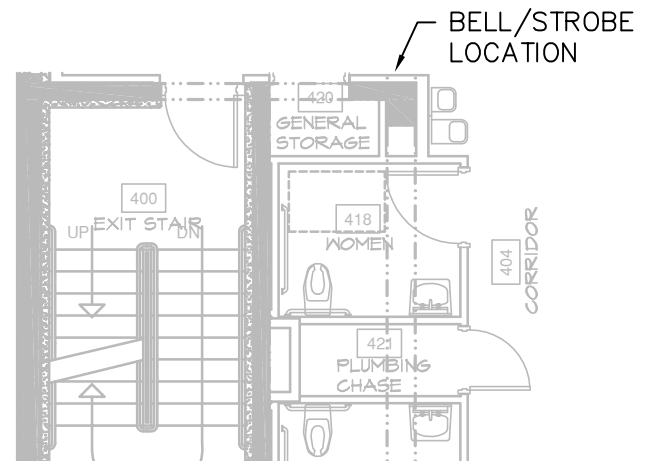
FIRST FLOOR
SCALE: 1/8"=1'-0"



SECOND FLOOR
SCALE: 1/8"=1'-0"



THIRD FLOOR
SCALE: 1/8"=1'-0"



FOURTH FLOOR
SCALE: 1/8"=1'-0"

GENERAL SHEET NOTES:

- A. PROVIDE SINGLE GANG BOX FOR STROBE AT EACH LOCATION AT 80" AFF. PROVIDE 3/4" CONDUIT FROM BOX TO CABLETRAY. THE STROBE AND ALL WIRING AND PROGRAMMING SHALL BE BY KENCO.
- B. UNDER EACH STROBE, PROVIDE SIGN THAT READS "EMERGENCY SHOWER IN USE ON THIS FLOOR WHEN ALARM IS ACTIVATED".



524 FIRST AVENUE S
GREAT FALLS, MT 59401
PH 406.452.9558
FX 406.727.9720

2291 W BROADWAY
SUITE 4
MISSOULA, MT 59808
PH 406.721.5936
FX 406.721.8716

MONTANA STATE UNIVERSITY

COOLEY LAB REMODEL
BOZEMAN, MONTANA

REFERENCE SHEETS:
E2.0, E2.1, E2.2,
E2.3 AND E2.4

DATE
10/28/11

PROJECT NUMBER
100104

DRAWING NUMBER
CE-1

NOVEMBER 7, 2011

ARCHITECTS DESIGN GROUP

RE: COOLEY LAB DOOR MODIFICATIONS

PAIR OF DOORS 004A (HW-17):

ADD:

1 EA	(VD)	EXIT DEVICE CX-9875L-996L-NL-M-LESS STRIKE (3')(RHR) (DELAYED EGRESS)	US26D
1 EA	(SC)	CYLINDER 80-132	626
1 EA	(ST)	ELECTRIC HINGE FBB179-54 4 ½" X 4 ½" NRP (CENTER LOCATION LHR DOOR ONLY FOR ELECTRIC STRIKE) (WIRE CHASE THRU DOOR)	US26D
1 EA	(VD)	ELECTRIC STRIKE 6223-FSE-24VDC (DOUBLE DOOR)	US32D
1 EA	(VD)	ADD "FA" FIRE ALARM CONTACTS TO THE PS914 POWER SUPPLY	
1 EA	(LC)	OPERATOR 4642-REG-TB (120VAC)	ALUM
2 EA	(LC)	WALL PLATE ACTUATORS 8310-856T	
1 PR	(IV)	FLUSH BOLTS FB458-12"	US26D

DELETE:

1 EA	(VD)	EXIT DEVICE 98L (3')(LHR)	US26D
1 EA	(VD)	EXIT DEVICE EL-98L (3')(RHR)	US26D
1 EA	(VD)	REM MULLION KR4954-7'	SP28
1 EA	(SC)	CYLINDER 80-159	626
1 EA	(LC)	CLOSER 4041-EDA-TB (RHR)	ALUM

* BALANCE OF HARDWARE RE-USED *

PAIR OF DOORS 004B (HW-18):

ADD:

1 EA	(VD)	EXIT DEVICE EL-98L-F-996L-BE-R-499F (3')(RHR)	US26D
1 EA	(VD)	POWER TRANSFER EPT-10	SP28
1 EA	(VD)	POWER SUPPLY PS914-2RS-FA	
1 EA	(LC)	OPERATOR 4642-REG-TB (120VAC)	ALUM
2 EA	(LC)	WALL PLATE ACTUATORS 8310-856T	

DELETE:

1 EA	(VD)	EXIT DEVICE 98L-F (3')(RHR)	US26D
1 EA	(LC)	CLOSER 4041-EDA-TB (RHR)	ALUM

DOOR 102A (HW-19):

ADD:

1 EA	(VD)	CHANGE TRIM FROM 996L-NL-R TO 996L-R	
1 EA	(LC)	OPERATOR 4642-REG-TB (120VAC)	ALUM
2 EA	(LC)	WALL PLATE ACTUATORS 8310-856T	

DELETE:

1 EA	(LC)	CLOSER 4041-EDA-TB	ALUM
------	------	--------------------	------

DOOR 102B (HW-21):

ADD:

1 EA	(VD)	EXIT DEVICE 98L-996L-NL-R-299 (3')(LHR)	US26D
1 EA	(SC)	CYLINDER 80-159	626
1 EA	(SE)	ELECTROMAGNETIC LOCK M490P	628
1 EA	(SE)	POWER SUPPLY PS902-4RL-FA	
		* FAILSAFE TIMEOUT BY SECURITY CONTRACTOR *	

DELETE:

1 EA	(SC)	LOCKSET ND80HD-RHODES	626
1 EA	(VD)	ELECTRIC STRIKE 6211-FSE-24VDC	US32D
1 EA	(VD)	POWER SUPPLY PS914	

DOOR 102D (HW-22):

ADD:

1 EA	(VD)	EXIT DEVICE CX-98L-F-996L-NL-R-299F (3')(LHR) (DELAYED EGRESS)	US26D
1 EA	(SC)	CYLINDER 80-132	626
1 EA	(VD)	POWER TRANSFER EPT-10	SP28
1 EA	(VD)	ADD "FA" FIRE ALARM CONTACTS TO THE PS914 POWER SUPPLY	
1 EA	(LC)	OPERATOR 4642-REG-TB (120VAC)	ALUM
2 EA	(LC)	WALL PLATE ACTUATORS 8310-856T	

DELETE:

1 EA	(VD)	EXIT DEVICE 98L-F (3')	US26D
1 EA	(LC)	CLOSER 4041-EDA-TB	ALUM

DOOR 106 (HW-20):

ADD:

1 EA	(VD)	EXIT DEVICE CX-98L-996L-NL-R-299F (3')(RHR) (DELAYED EGRESS)	US26D
1 EA	(SC)	CYLINDER 80-132	626
1 EA	(VD)	ELECTRIC STRIKE 6111-FSE-24VDC	US32D
1 EA	(VD)	POWER TRANSFER EPT-10	SP28
1 EA	(VD)	POWER SUPPLY PS914-FA	
1 EA	(LC)	OPERATOR 4642-REG-TB (120VAC)	ALUM
2 EA	(LC)	WALL PLATE ACTUATORS 8310-856T	

DELETE:

1 EA	(VD)	EXIT DEVICE 98L (3')	US26D
------	------	----------------------	-------

PAIR OF DOORS 127A (H -4 SIMILAR):

ADD:

2 SETS		PIVOT HINGES	BY ALUMINUM DOOR SUPPLIER
2 EA		INTERMEDIATE PIVOT	BY ALUMINUM DOOR SUPPLIER
2 EA		CO-12 PULL	BY ALUMINUM DOOR SUPPLIER
2 EA		CP-II PUSH BAR	BY ALUMINUM DOOR SUPPLIER
1 EA	(SE)	ELECTROMAGNETIC LOCK M490P	MATCH AL DR
1 EA	(VD)	POWER SUPPLY PS904-4RL-FA	
1 EA	(LC)	OPERATORS 4642-REG-TB (120VAC)	MATCH AL DR
1 EA	(LC)	CLOSER 4041-EDA-TB W/18PA DROP ARM	MATCH AL DR
2 EA	(LC)	WALL PLATE ACTUATORS 8310-856T	
1 EA	(VD)	REM MULLION KR4954-7'	MATCH AL DR
1 EA	(SC)	CYLINDER 80-132 (FOR REM MULLION)	626

* TIMED SWITCH CIRCUIT & MANUAL SWITCHES BY SECURITY CONTRACTOR *

* COLOR OF ALUMINUM DOOR SYSTEM – KAWNEER “DOVE GRAY”*

PAIR OF DOORS 127B (H -4 SIMILAR):

ADD:

2 SETS		PIVOT HINGES	BY ALUMINUM DOOR SUPPLIER
2 EA		INTERMEDIATE PIVOT	BY ALUMINUM DOOR SUPPLIER
2 EA		THRESHOLD	BY ALUMINUM DOOR SUPPLIER

2 SETS WEATHER-STRIP	BY ALUMINUM DOOR SUPPLIER
2 EA CO-12 PULL	BY ALUMINUM DOOR SUPPLIER
1 EA (VD) REM MULLION KR4954-7'	MATCH AL DR
1 EA (SC) CYLINDER 80-132 (FOR REM MULLION)	MATCH AL DR
1 EA (LC) OPERATORS 4642-REG-TB (120VAC)	MATCH AL DR
1 EA (LC) CLOSER 4041-EDA-TB W/18PA DROP BRACKET	MATCH AL DR
2 EA (LC) WALL PLATE ACTUATORS 8310-856T	
1 EA (SE) KEY SWITCH 653-14-L2	US32D
1 EA (SC) CYLINDER 80-132	MATCH AL DR

* COLOR OF ALUMINUM DOOR SYSTEM – KAWNEER “DOVE GRAY”

2ND FLOOR EAST EXIT STAIR DOOR (NEW GROUP):

ADD:

1 EA (VD) EXIT DEVICE CX-98L-F-996L-NL-R-299F (3')(LHR) (DELAYED EGRESS)	US26D
1 EA (SC) CYLINDER 80-159	626
1 EA (SC) CYLINDER 80-132	626
1 EA (VD) ELECTRIC STRIKE 6300-FSE-24VDC	US32D
1 EA (VD) POWER TRANSFER EPT-10	SP28
1 EA (VD) POWER SUPPLY PS914-FA	

EXISTING HARDWARE TO BE REUSED.

4TH FLOOR STAIR TO SKYWAY DOOR (NEW GROUP):

ADD:

1 EA (VD) EXIT DEVICE CX-98L-F-996L-NL-R-299F (3')(RHR) (DELAYED EGRESS)	US26D
1 EA (SC) CYLINDER 80-159	626
1 EA (SC) CYLINDER 80-132	626
1 EA (VD) ELECTRIC STRIKE 6300-FSE-24VDC	US32D
1 EA (VD) POWER TRANSFER EPT-10	SP28
1 EA (VD) POWER SUPPLY PS914-FA	

EXISTING HARDWARE TO BE REUSED

END HW SCHEDULE/COOLEY LAB DOOR MODIFICATIONS

COOLEY DOOR MODIFICATIONS

LOCAL DOOR ALARMS OPTION rev 3 (9-30-11)

BASIS OF DESIGN FOR COOLEY CODE COMPLIANCE IS THAT THIS IS A "B" OCCUPANCY AND UNRESTRAINED EXITING IS REQUIRED

DOOR	LOCATION	HW	SIZE	MODIFICATION ADD	DELETE	
004A	B/F WEST EXIT	17	NC	ROUGH IN FOR INTERCOM ROUGH IN FOR VIDEO ROUGH IN FOR SECURITY ALARM WARNING SIGN "ALARM WILL SOUND" DOOR OPERATORS ACTIVATION BUTTONS POWER FOR OPERATOR CHEXIT EXIT DEVICE -DELAYED EGRESS DOOR EDGE HEAD AND FOOT BOLTS ELECTRIFIED HINGE ELECTRIFIED STRIKE IN DOOR EDGE	EXISTING EXIT DEVICE	TO LEWIS RM 109 TO LEWIS RM 109 TO LEWIS RM 109 ALARM IN VESTIBULE
	SOUTH LEAF INACTIVE					
004B	B/F WEST EXIT			DOOR OPERATORS ACTIVATION BUTTONS POWER FOR OPERATOR		
102A	CORR TO CORR	19	NC	DOOR OPERATOR ACTIVATION BUTTONS	CARD READER POWER SUPPLY ELECTRIC STRIKE	DOOR SWING HAS CHANGED

ACCESS CONTROL NOT REQUIRED AT THIS DOOR
DOOR OPERATORS ADDED AT USER'S REQUEST ON BOTH SIDES OF DOOR

102B	21 NC	MAGNETIC LOCK ROUGH IN FOR MAG LOCK WARNING LIGHT & SIGN EXIT DEVICE (STANDARD)	CARD READER POWER SUPPLY ELECTRIC STRIKE	TIE TO SWITCHES WITH TIMER OVERRIDE TIE TO FIRE ALARM TO DEACTIVATE MAGNETIC LOCK
-------------	--------------	--	--	--

ACCESS CONTROL NOT REQUIRED AT THIS DOOR DURING NORMAL OPERATION - ONLY FOR ANIMAL TRANSPORT

DOOR TO HAVE STANDARD OPERATION AND HARDWARE FOR NORMAL USE

ANIMAL TRANSPORT: MAGNETIC LOCK TO BE ACTIVATED BY SPECIAL TIMED SWITCH CIRCUIT, CARD READER ACTIVATION AT THE ARC CORRIDOR AND WITHIN THE ELEV LOBBY
MAGNETIC LOCK AND WARNING LIGHTS TO BE DEACTIVATED BY USER AFTER MONKEY TRANSPORT. SUGGESTED FAILSAFE TIME OUT AFTER 5 MINUTES TO MAINTAIN
EMERGENCY EXITING FUNCTION. TIE IN TO FIRE ALARM TO OVERRIDE LOCK DOWN IN AN EMERGENCY.

102C	3 NC	NO CHANGE
-------------	-------------	-----------

102D ELEV LOBBY	22 NC	DOOR OPERATOR ACTIVATION BUTTONS POWER FOR OPERATOR ROUGH IN FOR INTERCOM ROUGH IN FOR VIDEO ROUGH IN FOR SECURITY ALARM CARD READER ROOM 103 SIDE ELECTRIC STRIKE CHEXIT EXIT DEVICE -DELAYED EGRESS SCHEDULED EXIT DEVICE	TIE IN TO ELECTRIC STRIKE/CARD READER TO LEWIS RM 109 TO LEWIS RM 109 TO LEWIS RM 109 CARD READER ON 102 SIDE IS IN HW - 22
------------------------	--------------	---	---

ACCESS CAN BE GRANTED VIA RM 109 THROUGH THE INTERCOM VIDEO

DOOR OPERATOR ADDED TO SATISFY CODE REVIEW ON ROOM 103 SIDE DOOR IS AN EXIT AND CANNOT BE SECURE FROM THE LOBBY SIDE

DOOR OPERATOR ADDED AT USER'S REQUEST ON ROOM 102 SIDE

DOOR OPERATOR CONTROLS NEED TO BE TIED INTO ACCESS CONTROL SYSTEM ON BOTH SIDES

INGRESS IS CONTROLLED VIA CARD READER

EGRESS IS CONTROLLED VIA CARD READER

EMERGENCY EGRESS IS PROVIDED BY DELAYED EGRESS EXIT DEVICE WHICH SETS OFF A LOCAL ALARM TIED BACK TO LEWIS 109

NEED ADDITIONAL CARD READER TO DEACTIVATE THE ANIMAL LOCKDOWN SEQUENCE

106	20	CHEXIT EXIT DEVICE -DELAYED EGRESS SCHEDULED EXIT DEVICE CARD READER ROUGH IN ON INTERIOR OF DOOR CARD READER ROUGH IN ON EXTERIOR OF DOOR ROUGH IN FOR SECURITY ALARM
------------	-----------	---

INGRESS IS CONTROLLED VIA CARD READER

EGRESS IS CONTROLLED VIA CARD READER

EMERGENCY EGRESS IS PROVIDED BY DELAYED EGRESS EXIT DEVICE/ELECTRIC STRIKE WHICH SETS OFF A LOCAL ALARM TIED BACK TO LEWIS 109

127A ENTRY INNER	NEW NC	NEW AL FRAME/DOOR REMOVABLE MULLION
-------------------------	---------------	--

INGRESS IS CONTROLLED VIA CARD READER

EGRESS IS CONTROLLED VIA CARD READER

EMERGENCY EGRESS IS PROVIDED BY DELAYED EGRESS EXIT DEVICE/ELECTRIC STRIKE WHICH SETS OFF A LOCAL ALARM TIED BACK TO LEWIS 109

ACCESS CAN BE GRANTED VIA RM 109 THROUGH THE INTERCOM VIDEO

4TH FL STAIR TO SKYWAY NEW NC ROUGH IN FOR SECURITY ALARM
CHEXIT EXIT DEVICE -DELAYED EGRESS
MAGNETIC LOCK
ROUGH IN FOR CARD READER FROM CORRIDOR SIDE
ROUGH IN FOR CARD READER FROM STAIR SIDE

TO LEWIS RM 109

INGRESS IS CONTROLLED VIA CARD READER

EGRESS IS CONTROLLED VIA CARD READER

NO REQUIREMENTS FOR EMERGENCY EGRESS REQUIRED

GENERAL

KENCO TO IDENTIFY LOCATION OF THEIR DEVICES FOR DAC ROUGH IN

REVIEW KEYING/LOCKSET REQD FOR EACH DOOR

DOORS IN STAIR WELL DO NOT NEED TO BE LOCKED OUT DURING ANIMAL TRANSPORT