

RFI 24

Project: COOLEY LABORATORY RENOVATION
Job: 3146 COOLEY LAB, PPA# 10-0023
Customer: STOFMT MSU BOZEMAN

POTENTIAL IMPACTS
Cost Impact: Yes
Schedule Impact: No

Issued To: CONSTRUCTION MANAGEMENT SERV.
P.O. BOX 7274
BOZEMAN, MT 59715

Attention: DONALD J. PLATISHA
Phone/Fax: 406 585-0611 / 406 585-2698

Coordination copies to:

Item: Power Requirements Emergency Shower Type: ELECTRICAL
Reference: E0.1 note W Spec. Section:
Attachments: Cut Sheet Water Saver Emergency Shower

Description of Request

Question:
The emergency shower units require 120 VAC, 3 amp power for operation of the flow switch and and horn/strobe see attached cut sheet. We are not currently seeing this power requirement called for on drawings.

Recommendation:
Provide power to these units. Please let us know what panel this power requirement should come from.

Respond By: 09/05/11 By: TIM THOLT

Response

Location and wiring for shower horn/strobes will be shown on an upcoming RFP.

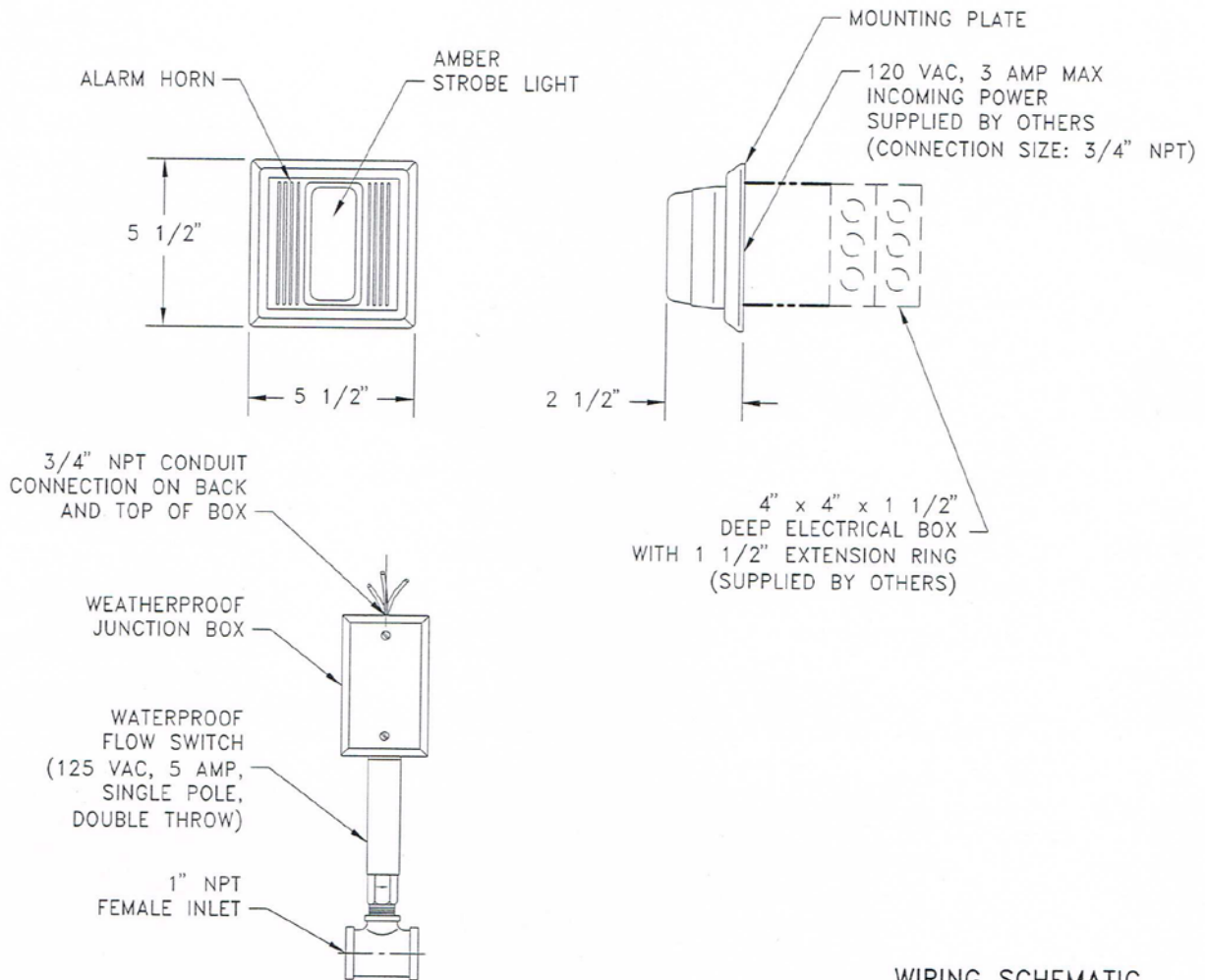
Response by: Brad Kauffman (GPD) on 12 September, 2011.

Signed: _____ Date: _____

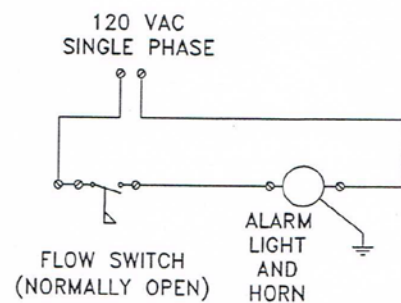
Proceed as Indicated: _____ Date: _____

Owner Authorized Representative

AP280-230
 INDOOR COMBINATION STROBE LIGHT AND ALARM HORN WITH WEATHERPROOF FLOW SWITCH ASSEMBLY



WIRING SCHEMATIC



ALARM

NOTES:

1. FLOW SWITCH IS DESIGNED TO ACTIVATE AT 3.0 GPM AND DEACTIVATE AT 1.75 GPM.
2. FLOW SWITCH MUST BE INSTALLED VERTICALLY IN A HORIZONTAL PIPE RUN, UPSTREAM OF UNIT AND AT LEAST 6" FROM FITTING.
3. SOUND OUTPUT ON HORN IS 90 dB AT 10 FEET.
4. ALL WIRING TO BE PROVIDED BY OTHERS.

UNITS (EXCEPT THOSE WITH SELF-CLOSING VALVES) COMPLY WITH THE REQUIREMENTS OF ANSI Z358.1.

TEST ALL EMERGENCY EQUIPMENT AT LEAST WEEKLY.

Drawing Number: CHR-12

Revision Number: 080911-TEC