

RFI 21

Project: COOLEY LABORATORY RENOVATION  
Job: 3146 COOLEY LAB, PPA# 10-0023  
Customer: STOFMT MSU BOZEMAN

POTENTIAL IMPACTS  
Cost Impact: Yes  
Schedule Impact: No

Issued To: CONSTRUCTION MANAGEMENT SERV.  
P.O. BOX 7274  
BOZEMAN, MT 59715

Attention: DONALD J. PLATISHA Coordination copies to:MSU  
Phone/Fax: 406 585-0611 / 406 585-2698

Item: RELOCATING EXISTING UTILITIES FROM ELEV Type: MECH  
Reference: S2.7, M2.1.2, M2.0.3, Spec. Section:  
Attachments: 1 SKETCH, 1 PICTURE SKETCH

Description of Request

QUESTION:

To facilitate the installation of the battered piers on the north wall of elevator pit addition and reduce the chance of unintended utility shut downs to the existing utilities feeding the ARC from Cooley should be relocated.

RECOMMENDATION:

We would propose to temporarily relocate the fire sprinkler line feeding ARC and permanently relocating the 6"steam,the 2" condensate, and 4" water service to ARC. We would propose to relocate where the steam, condensate, and water service leave Cooley from the basement of Cooley to the ceiling space on the 1st floor of Cooley (see attached picture). To be able to accommodate these lines will be on the first floor of Cooley we would swap the duct work (as shown on attached sketch)

Respond By: 08/29/11 By: TIM THOLT

Response

The work as proposed is fine. If possible, the pipe risers along north end of the east wall of the cold room vestibule Room 117 should be furred in as part of the "A" wall on the first floor. We agree that CMS/DAC's suggestion that a permanent reroute of the piping was in the project's best interest versus a temporary reroute for only the duration of the pier installation

Dave Broquist/F. J. di Stefano

Signed: \_\_\_\_\_ Date: \_\_\_\_\_

Proceed as Indicated: \_\_\_\_\_ Date: \_\_\_\_\_

Owner Authorized Representative





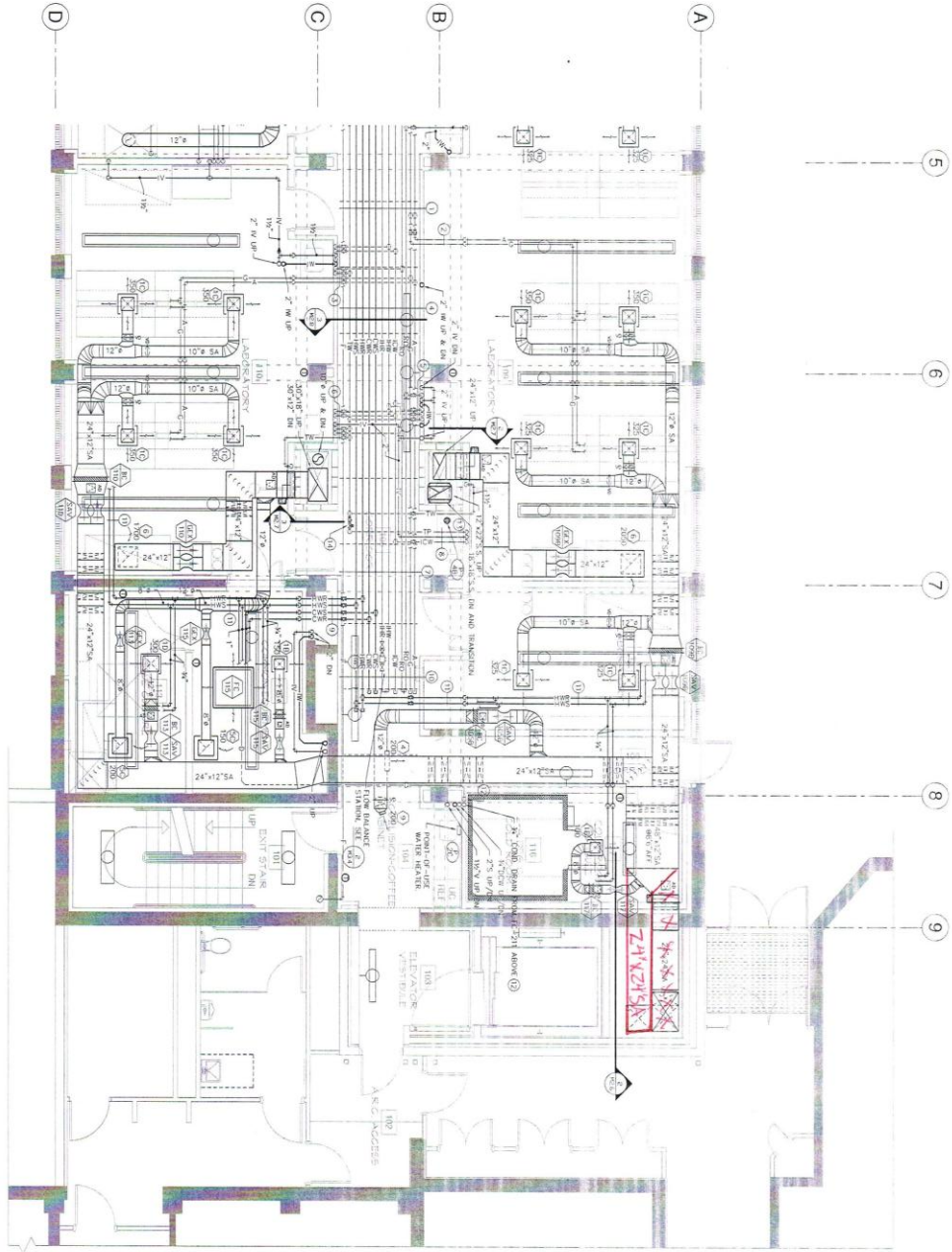
Fire Sprinkler

Condensate

Steam

Water





1 FIRST FLOOR MECHANICAL PLAN (EAST)



SPECIFIC SHEET NOTES

- 1 FOR PIPING BRANCH SIZES SEE THE FOLLOWING:
 

6"	1"
8"	1 1/2"
10"	2"
12"	2 1/2"
14"	3"
16"	3 1/2"
18"	4"
20"	4 1/2"
24"	5"
30"	6"
36"	7"
42"	8"
48"	9"
54"	10"
60"	11"
66"	12"
72"	13"
78"	14"
84"	15"
90"	16"
- 2 FOR PIPING BRANCH SIZES SEE THE FOLLOWING:
 

6"	1"
8"	1 1/2"
10"	2"
12"	2 1/2"
14"	3"
16"	3 1/2"
18"	4"
20"	4 1/2"
24"	5"
30"	6"
36"	7"
42"	8"
48"	9"
54"	10"
60"	11"
66"	12"
72"	13"
78"	14"
84"	15"
90"	16"
- 3 FOR PIPING BRANCH SIZES SEE THE FOLLOWING:
 

6"	1"
8"	1 1/2"
10"	2"
12"	2 1/2"
14"	3"
16"	3 1/2"
18"	4"
20"	4 1/2"
24"	5"
30"	6"
36"	7"
42"	8"
48"	9"
54"	10"
60"	11"
66"	12"
72"	13"
78"	14"
84"	15"
90"	16"
- 4 FOR PIPING BRANCH SIZES SEE THE FOLLOWING:
 

6"	1"
8"	1 1/2"
10"	2"
12"	2 1/2"
14"	3"
16"	3 1/2"
18"	4"
20"	4 1/2"
24"	5"
30"	6"
36"	7"
42"	8"
48"	9"
54"	10"
60"	11"
66"	12"
72"	13"
78"	14"
84"	15"
90"	16"
- 5 FOR PIPING BRANCH SIZES SEE THE FOLLOWING:
 

6"	1"
8"	1 1/2"
10"	2"
12"	2 1/2"
14"	3"
16"	3 1/2"
18"	4"
20"	4 1/2"
24"	5"
30"	6"
36"	7"
42"	8"
48"	9"
54"	10"
60"	11"
66"	12"
72"	13"
78"	14"
84"	15"
90"	16"
- 6 FOR PIPING BRANCH SIZES SEE THE FOLLOWING:
 

6"	1"
8"	1 1/2"
10"	2"
12"	2 1/2"
14"	3"
16"	3 1/2"
18"	4"
20"	4 1/2"
24"	5"
30"	6"
36"	7"
42"	8"
48"	9"
54"	10"
60"	11"
66"	12"
72"	13"
78"	14"
84"	15"
90"	16"
- 7 FOR PIPING BRANCH SIZES SEE THE FOLLOWING:
 

6"	1"
8"	1 1/2"
10"	2"
12"	2 1/2"
14"	3"
16"	3 1/2"
18"	4"
20"	4 1/2"
24"	5"
30"	6"
36"	7"
42"	8"
48"	9"
54"	10"
60"	11"
66"	12"
72"	13"
78"	14"
84"	15"
90"	16"
- 8 FOR PIPING BRANCH SIZES SEE THE FOLLOWING:
 

6"	1"
8"	1 1/2"
10"	2"
12"	2 1/2"
14"	3"
16"	3 1/2"
18"	4"
20"	4 1/2"
24"	5"
30"	6"
36"	7"
42"	8"
48"	9"
54"	10"
60"	11"
66"	12"
72"	13"
78"	14"
84"	15"
90"	16"
- 9 FOR PIPING BRANCH SIZES SEE THE FOLLOWING:
 

6"	1"
8"	1 1/2"
10"	2"
12"	2 1/2"
14"	3"
16"	3 1/2"
18"	4"
20"	4 1/2"
24"	5"
30"	6"
36"	7"
42"	8"
48"	9"
54"	10"
60"	11"
66"	12"
72"	13"
78"	14"
84"	15"
90"	16"
- 10 FOR PIPING BRANCH SIZES SEE THE FOLLOWING:
 

6"	1"
8"	1 1/2"
10"	2"
12"	2 1/2"
14"	3"
16"	3 1/2"
18"	4"
20"	4 1/2"
24"	5"
30"	6"
36"	7"
42"	8"
48"	9"
54"	10"
60"	11"
66"	12"
72"	13"
78"	14"
84"	15"
90"	16"
- 11 FOR PIPING BRANCH SIZES SEE THE FOLLOWING:
 

6"	1"
8"	1 1/2"
10"	2"
12"	2 1/2"
14"	3"
16"	3 1/2"
18"	4"
20"	4 1/2"
24"	5"
30"	6"
36"	7"
42"	8"
48"	9"
54"	10"
60"	11"
66"	12"
72"	13"
78"	14"
84"	15"
90"	16"
- 12 ROUTE IN COMMERCIAL SPACES TO EXTRA R-19 INSULATION.
- 13 IN NEW FRAMES, TYPE 1, CORNER.
- 14 UNBUILT BRICK FRAMING ASSEMBLY, SEE DETAIL.

NOTE: COORDINATE ALL DUCT AND PIPING WORKERS' STRIPS WITH DISTRIBUTION AND SERVICES.

DATE: 11/11/11  
 DRAWN BY: J. B. BROWN  
 CHECKED BY: J. B. BROWN  
 PROJECT: 1111111111