

RFI 142

Project: COOLEY LABORATORY RENOVATION
Job: 3146 COOLEY LAB, PPA# 10-0023
Customer: STOFMT MSU BOZEMAN
Issued To: CONSTRUCTION MANAGEMENT SERV.
P.O. BOX 7274
BOZEMAN, MT 59715

POTENTIAL IMPACTS
Cost Impact: Yes
Schedule Impact: No

Attention: DONALD J. PLATISHA
Phone/Fax: 406 585-0611 / 406 585-2698
Coordination copies to:

Item: FIRE ALARM ARC/LEWIS/COOLEY VESTIBULE Type: FIRE ALARM
Reference: E2.1 Spec. Section:
Attachments:

Description of Request

QUESTION:

In the ARC/Cooley/Lewis walkway/intersection which building does the the fire alarm pulls and horns and strobes integrate with? If an event happens in this intersecting space which buildings should be alarmed?

Respond By: 09/13/12 By: TIM THOLT

Response

To remain as they were pre-construction;

All devices located within the corridor North of door 102B should integrate with ARC Fire alarm Panel
All devices located within of the corridor South of door 102B should integrate with the Lewis Fire Alarm Panel.

See Attached

Signed: DPlatisha Date: 9/6/2012

Proceed as Indicated: _____ Date: _____

Owner Authorized Representative

9

GRID LINE
FACE [E] BRICK

[N] CONCRETE / [E] CONCRETE CONNECTION - SEE

[N] CLOSET

9'-10"

[E] CORRIDOR

[E] VESTIBULE

127

127A

127B

128

128

125

126A

126B

126C

126

126

126

126

126

126

ARC Fire Alarm Panel

[N] EXTERIOR ME
SHAFT
1S01

[N] ELEVATOR
SHAFT
1S02

[N] ELEVATOR
VESTIBULE
103

102A

102B

102C

102D

102

102

102

102

102

102

102

102

102

102

102

102

102

102

102

102

102

102

102

102

102

[E] RESTROOM
129

LEWIS Fire Alarm Panel

LOWER
LEVEL

UPPER
LEVEL

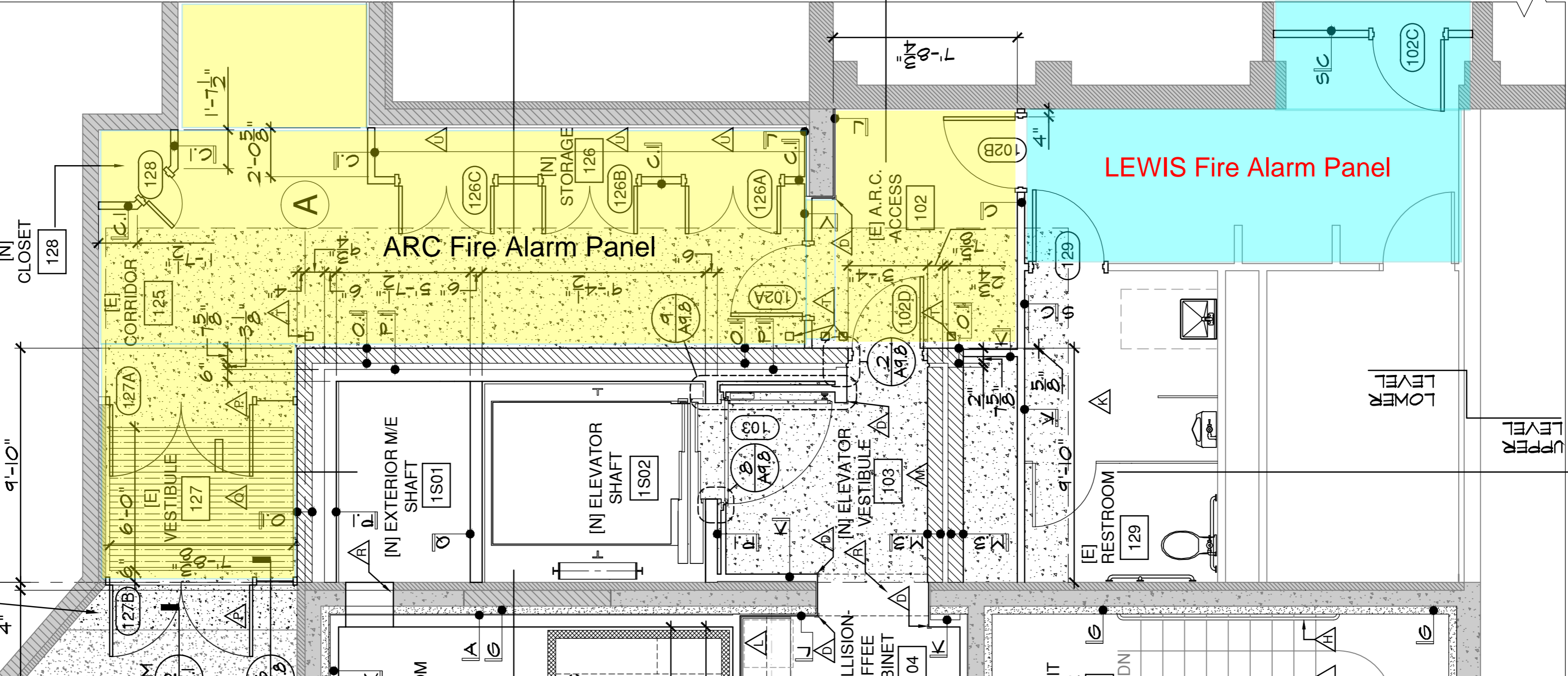
±8'-4 1/4"

A A5.2 B A5.2

A A5.3 B A5.3

A A5.1

B A5.1



From: [Vaniman, Cecilia](#)
To: dp@cmsco.net; [Greg Schermele](#); [Kirk Scheel](#); [Tim Tholt](#)
Cc: [Frances Lefcort](#)
Subject: Fire Alarm in the ARC connecting Corridor
Date: Thursday, September 06, 2012 9:09:57 AM

Everyone:

I met with Skip Hougland about the alarm in the connecting corridor between Cooley, Lewis and the ARC. He wants that alarm only to tie into one panel, and feels that should be for the ARC. This is where it was originally connected.

Thank you.

Cecilia R. Vaniman, AIA Architect
Cooley Lab Project Manager
MSU Phone 406-994-5459
Cell 406-580-6700
MSU Fax 406-994-6572