

RFI 110

**Project:** COOLEY LABORATORY RENOVATION  
**Job:** 3146 COOLEY LAB, PPA# 10-0023  
**Customer:** STOFMT MSU BOZEMAN

POTENTIAL IMPACTS

**Cost Impact:** No  
**Schedule Impact:** No

**Issued To:** CONSTRUCTION MANAGEMENT SERV.  
P.O. BOX 7274  
BOZEMAN, MT 59715

**Attention:** DONALD J. PLATISHA  
**Phone/Fax:** 406 585-0611 / 406 585-2698

**Coordination copies to:**

**Item:** W Beam at New Stair Landings

**Type:** ARCH/STRUC

**Reference:** 9/S3.1

**Spec. Section:**

**Attachments:**

**Description of Request**

QUESTION:  
The W Beam End Connection shown on detail 9 on S3.1 shows the W Beam being connected to plate by bolted connection. Is it permissible to use a 3/16" fillet weld in-lieu of the bolted connection?

**Respond By:** 04/17/12 **By:** TIM THOLT

**Response**

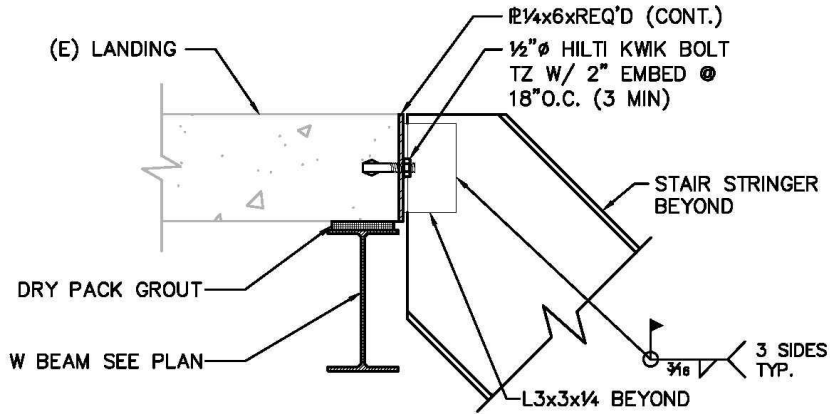
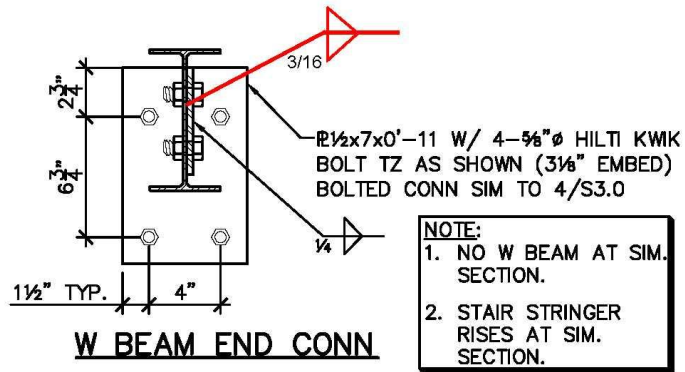
It is permissible to use a 3/16" fillet weld. Weld the 3/8" connection plate to the beam web three sides typ.

Jerome Gannon 4/13/12

**Signed:** \_\_\_\_\_ **Date:** \_\_\_\_\_

**Proceed as Indicated:** \_\_\_\_\_ **Date:** \_\_\_\_\_

Owner Authorized Representative



**9 STAIR LANDING DETAIL**

SCALE: 1/2" = 1'-0"