

RFI 109

Project: COOLEY LABORATORY RENOVATION
Job: 3146 COOLEY LAB, PPA# 10-0023
Customer: STOFMT MSU BOZEMAN
Issued To: CONSTRUCTION MANAGEMENT SERV.
P.O. BOX 7274
BOZEMAN, MT 59715

POTENTIAL IMPACTS
Cost Impact: No
Schedule Impact: No

Attention: DONALD J. PLATISHA
Phone/Fax: 406 585-0611 / 406 585-2698

Coordination copies to:

Item: 4" AND 3" ISOLATION STEAM VALVES Type: MECH
Reference: M3.1 Spec. Section:
Attachments:

Description of Request

QUESTION:
Shown on drawing M3.1 Detail 1 there are 2 sets of 2/3, 1/3 steam modulating valve headers. One set for each of the 2 heat exchangers. Each of these steam headers have redundant isolation valves before and after the modulating valves. We would propose to eliminate the 2-3" valves and the 2-4" valves in each of the modulating valve headers for the following reasons:

- 1) There is little room for these valves and it will make them not easily accessible.
- 2) There is no isolation gain as we already have a 6" valve upstream for each header and a condensation valve before and after the wye strainer blow down. Either of these headers can be used for isolation and maintenance or repair without these additional valves allowing the alternate header to continue providing steam over water heat.

Please advise if this is acceptable.

WILLIAMS PLUMBING

Respond By: 04/13/12 By: TIM THOLT

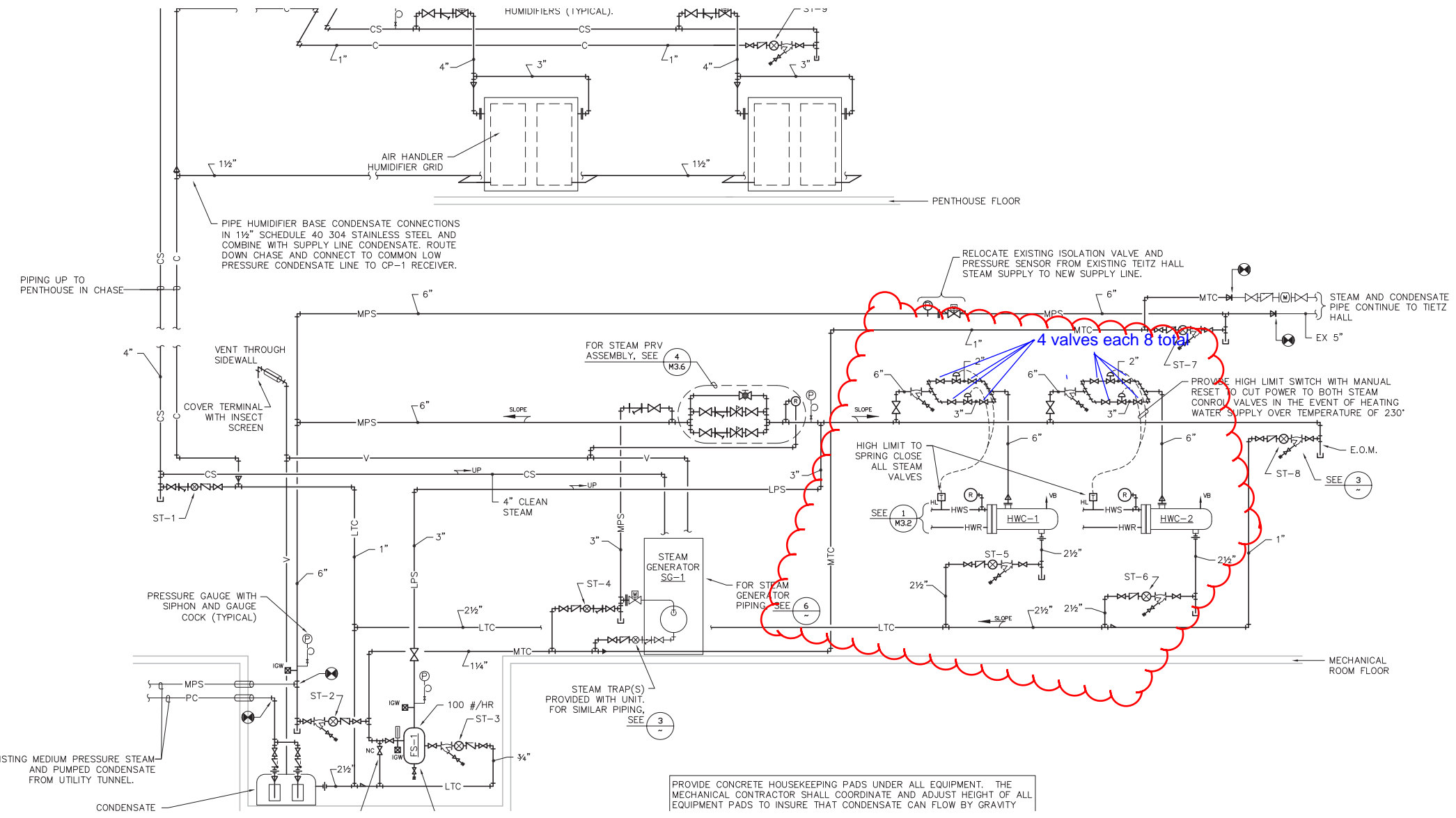
Response

The deletion of the 8 valves is acceptable. Please provide pricing -

Signed: Dave Broquist Date: 4-13-12

Proceed as Indicated: Date:

Owner Authorized Representative



PIPE HUMIDIFIER BASE CONDENSATE CONNECTIONS IN 1½" SCHEDULE 40 304 STAINLESS STEEL AND COMBINE WITH SUPPLY LINE CONDENSATE. ROUTE DOWN CHASE AND CONNECT TO COMMON LOW PRESSURE CONDENSATE LINE TO CP-1 RECEIVER.

PIPING UP TO PENTHOUSE IN CHASE

PENTHOUSE FLOOR

RELOCATE EXISTING ISOLATION VALVE AND PRESSURE SENSOR FROM EXISTING TIETZ HALL STEAM SUPPLY TO NEW SUPPLY LINE.

4 valves each 8 total

PROVIDE HIGH LIMIT SWITCH WITH MANUAL RESET TO CUT POWER TO BOTH STEAM CONTROL VALVES IN THE EVENT OF HEATING WATER SUPPLY OVER TEMPERATURE OF 230°F

E.O.M.

STEAM TRAP(S) PROVIDED WITH UNIT. FOR SIMILAR PIPING, SEE 3

PROVIDE CONCRETE HOUSEKEEPING PADS UNDER ALL EQUIPMENT. THE MECHANICAL CONTRACTOR SHALL COORDINATE AND ADJUST HEIGHT OF ALL EQUIPMENT PADS TO INSURE THAT CONDENSATE CAN FLOW BY GRAVITY

MECHANICAL ROOM FLOOR

EXISTING MEDIUM PRESSURE STEAM AND PUMPED CONDENSATE FROM UTILITY TUNNEL.

CONDENSATE